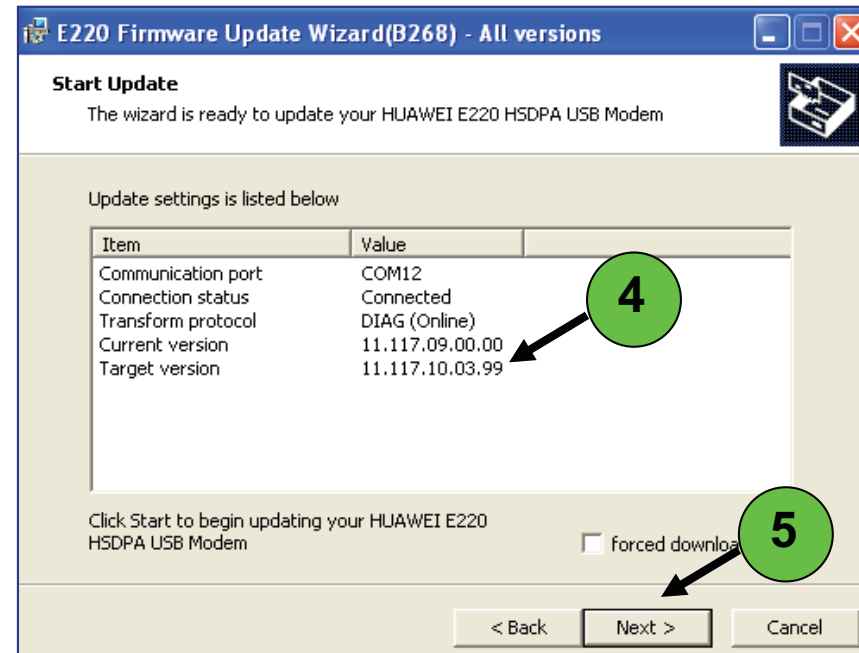
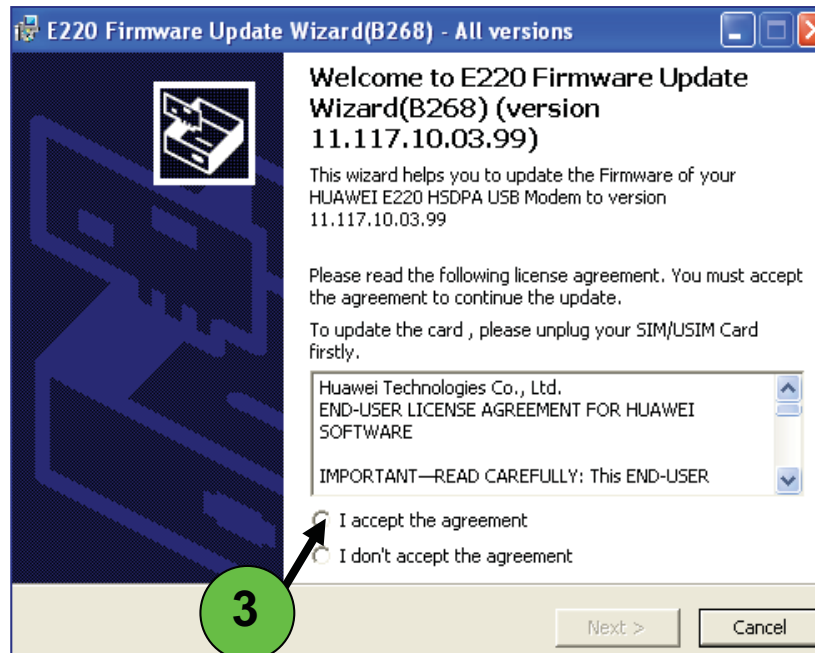


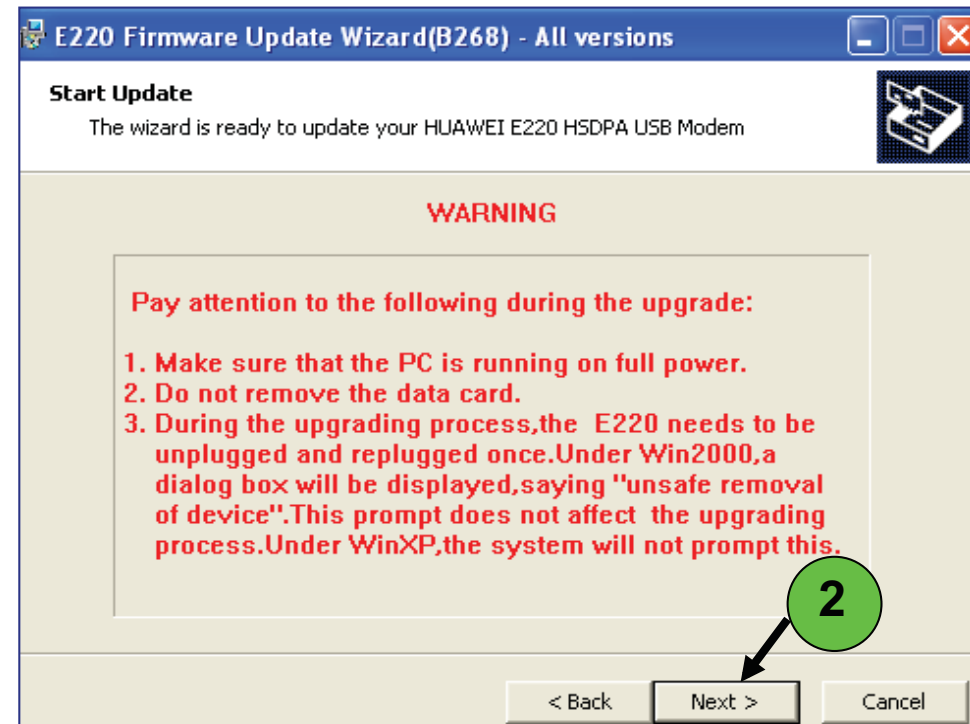
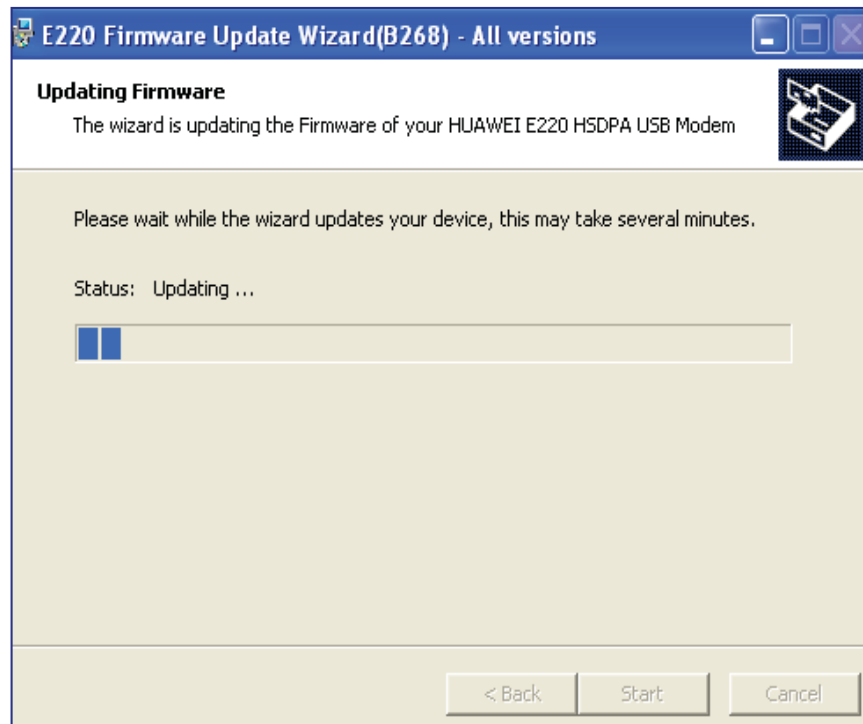
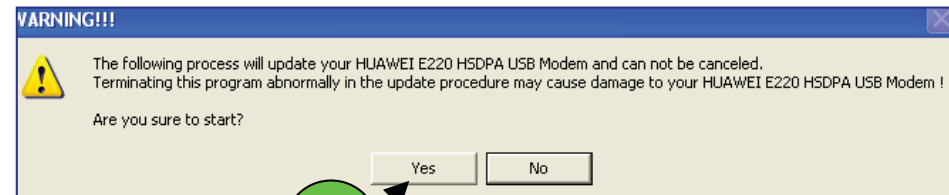
# E220 Software and Firmware Upgrade

*For PC user*

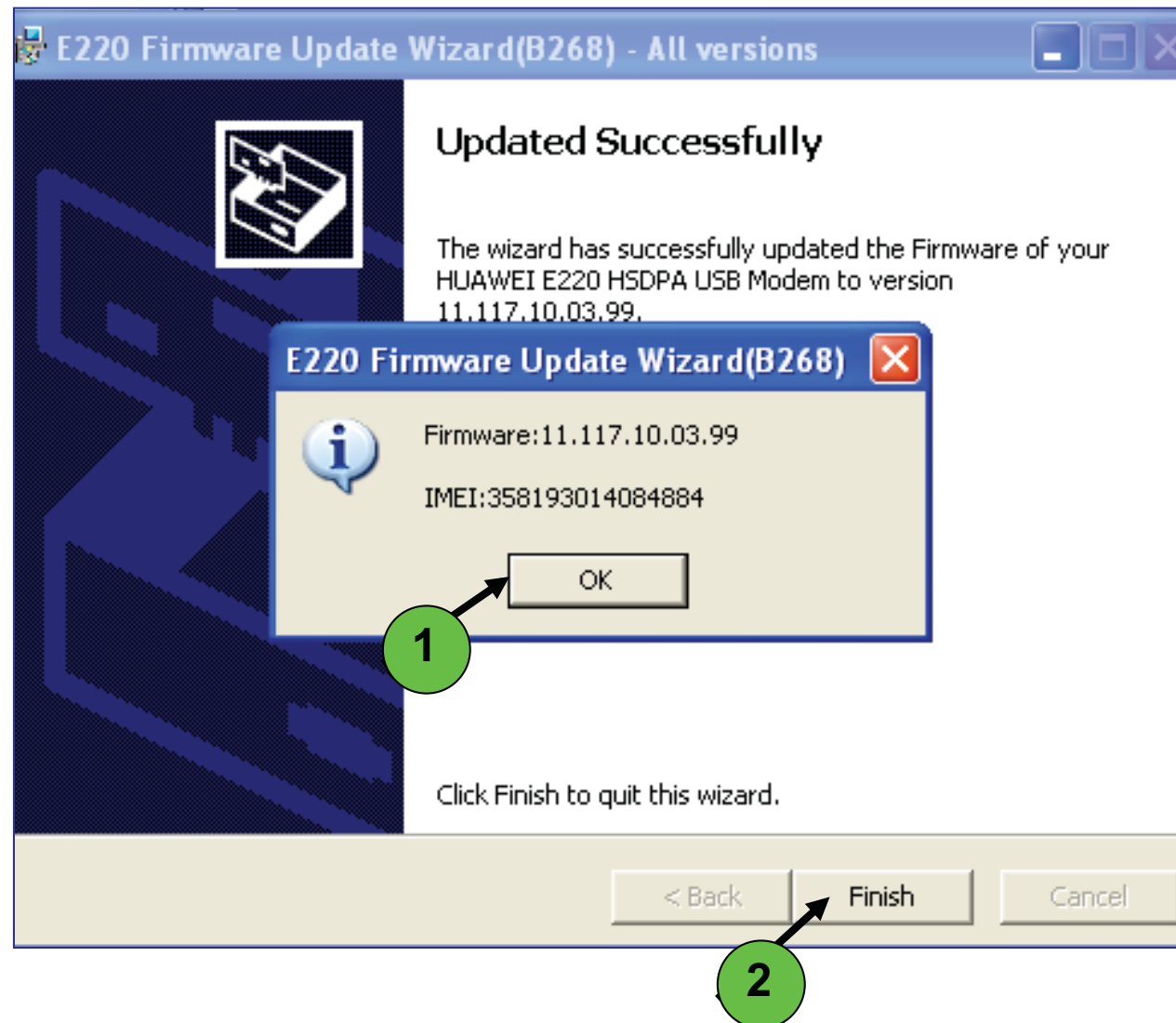
1. Open E220 Software Upgrade folder
2. Double click 
3. Click I accept the agreement
4. Make sure its version is 11.117.10.03.99
5. Click Next



1. Click Yes when prompt to start
2. Click Next
3. The firmware will be upgraded

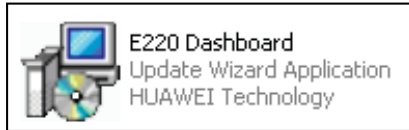


1. Click OK
2. Click Finish



1. Open E220 Software Upgrade folder

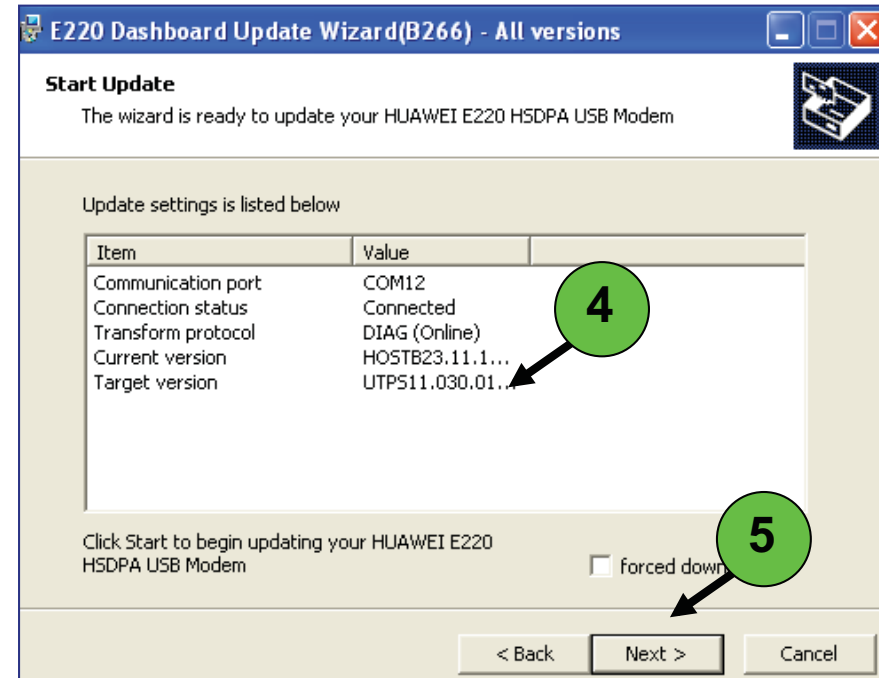
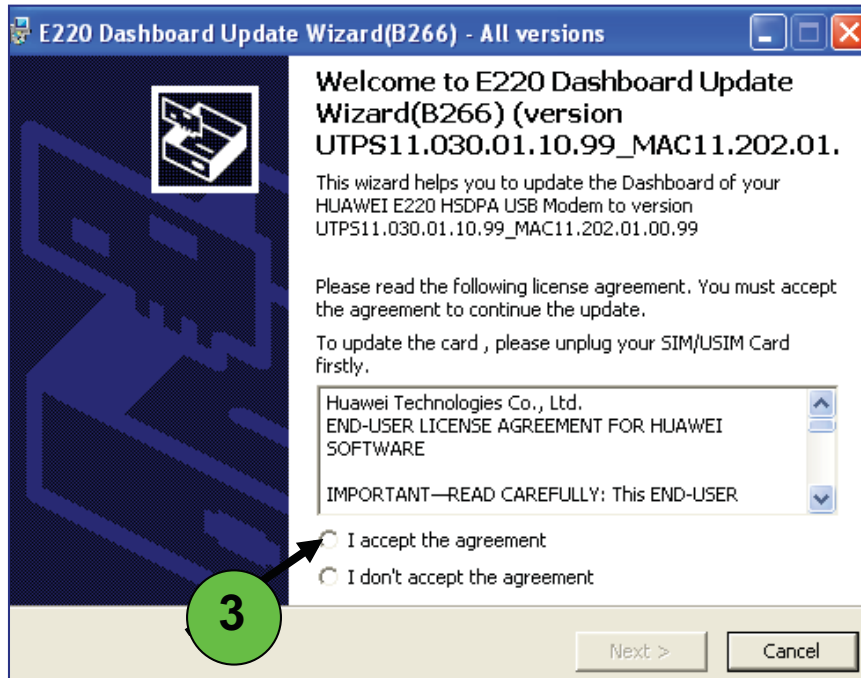
2. Click



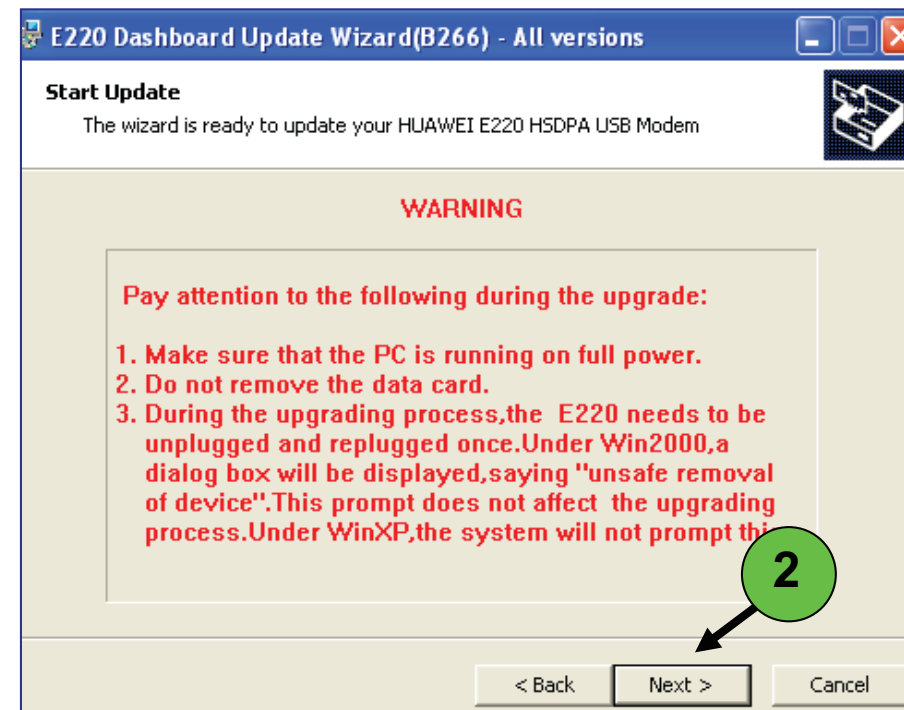
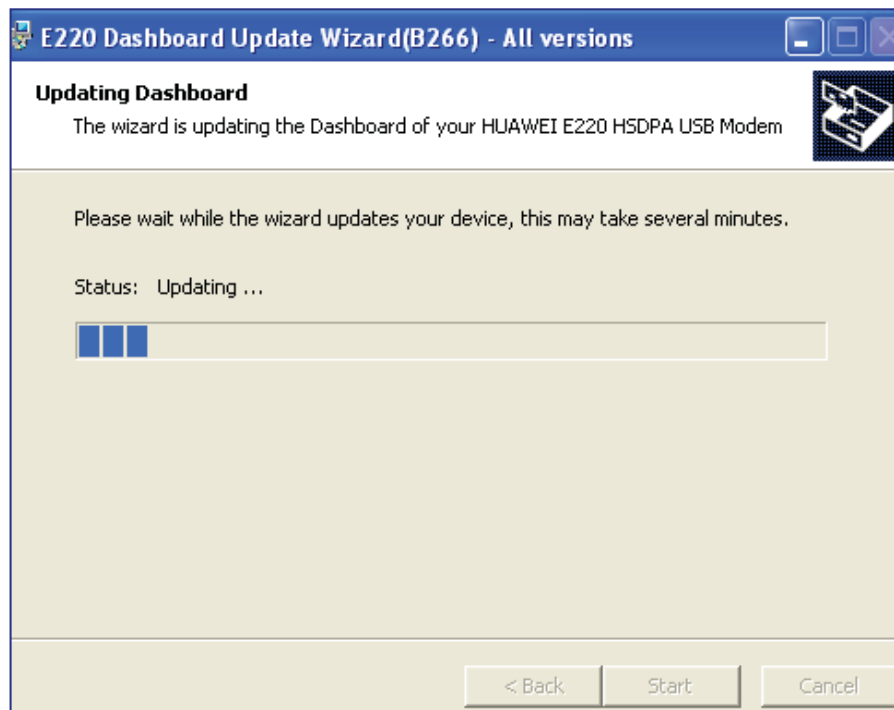
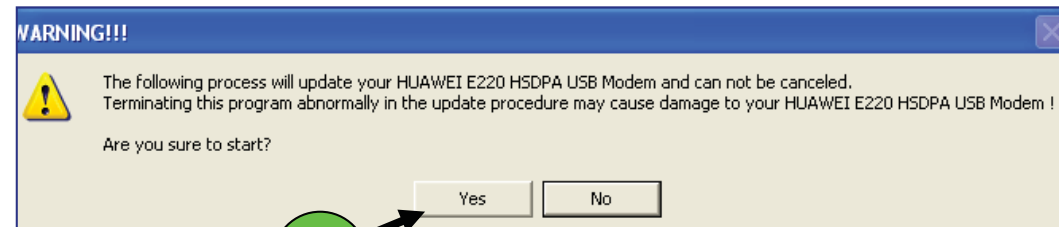
3. Click I accept the agreement

4. Make sure its version is UTPS11.030.01.10.99\_MAC11.202.01.00.99

5. Click Next



1. Click Yes to start upgrading the dashboard
2. Click Next to continue
3. The dashboard will be upgraded



1. Click Finish
2. Unplug the modem and re-plug to install the new connection software on the laptop

