

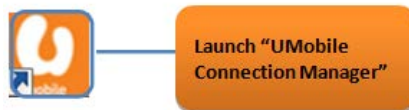


- Postpaid Plans
- Prepaid Plans
- Other Data Plans
- Booster Plan
- Coverage Locations
- Check Your Connection Speed
- Modem Installation**
- User Guide

How To Configure Your Modem

General		U Mobile	
HUAWEI USB MODEM	ZTE USB MODEM	7.2Mbps and 42Mbps USB Modem	21Mbps MIFI Modem

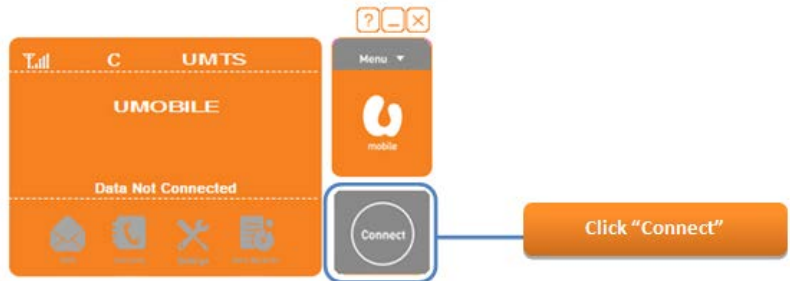
- Step 1** Plug in the modem to the USB port
- Step 2** Install the modem drivers and UMobile Connection Manager
- Step 3** Once Installed, you can launch the application from the UMobile Connection Manager Icon on your desktop



Step 4



Step 5



Step 6 Successful Connection

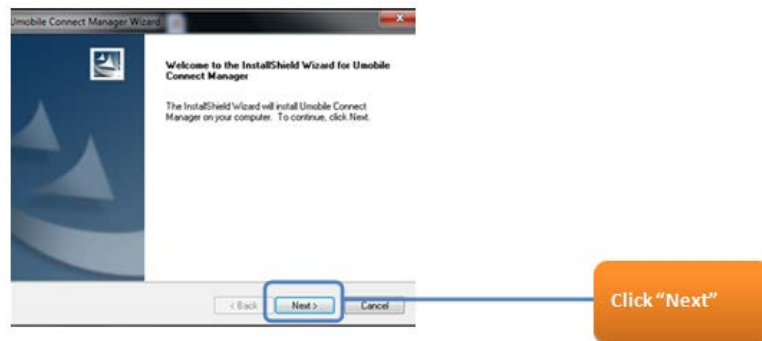


Step by step installation of the modem drivers and UMobile Connection Manager

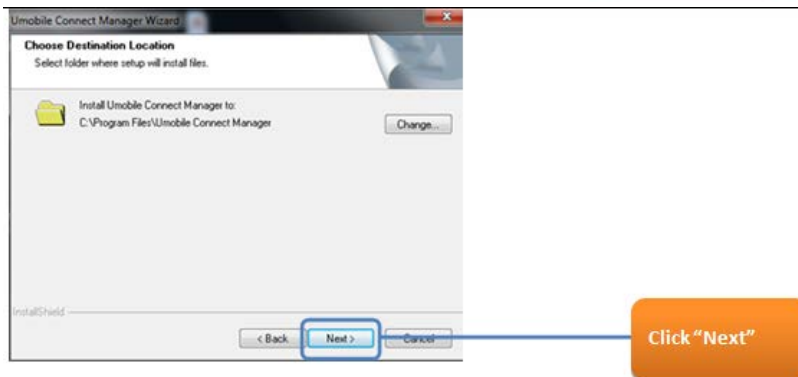
Step 1



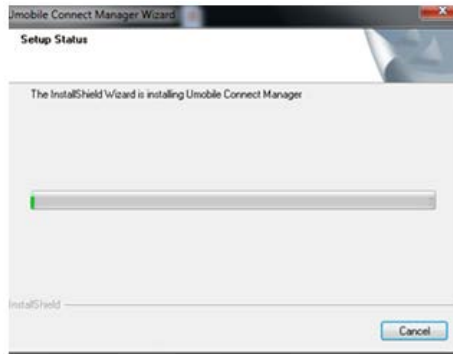
Step 2 Start to install once UMobile Connection Manager Wizard box appeared on your screen



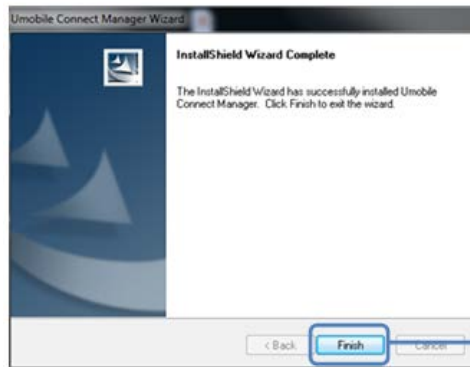
Step 3



Step 4 Installation start

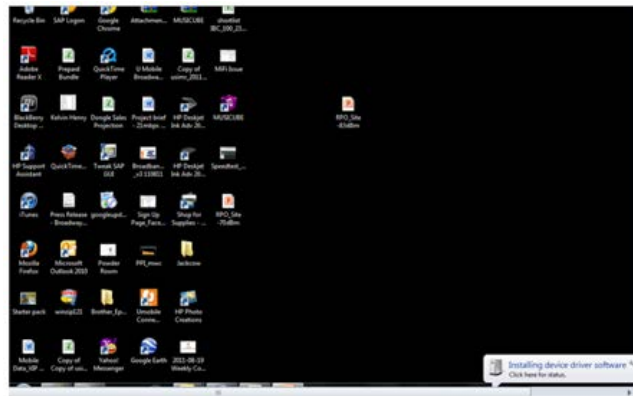


Step 5 Installation complete



Click "Finish"

Step 6 Your terminal will start to install the device driver software



Step 7 Once Installed, you can launch the application from the UMobile Connection Manager Icon on your desktop.



Launch "UMobile Connection Manager"

Downloads

- All Channels
- Planet Music
- Multiplayer Games
- U 乐园
- News Desk
- Ur Lifestyle

Support

- Locate Us
- Prepaid Top Up Locations
- Payment Methods
- Phone Settings
- How To Use
- FAQs
- Contact Us
- Content Provider Access

Quick Links

- Postpaid Plans
- Enterprise Mobile Plans
- Broadband Postpaid Plans
- Broadband Prepaid Plans

Online Self-care

- Personal Account Login
- Corporate Account Login
- Purchase SIM Pack

