



Postpaid Plans

Prepaid Plans

Other Data Plans

Booster Plan

Coverage Locations

Check Your Connection Speed

Modem Installation

User Guide

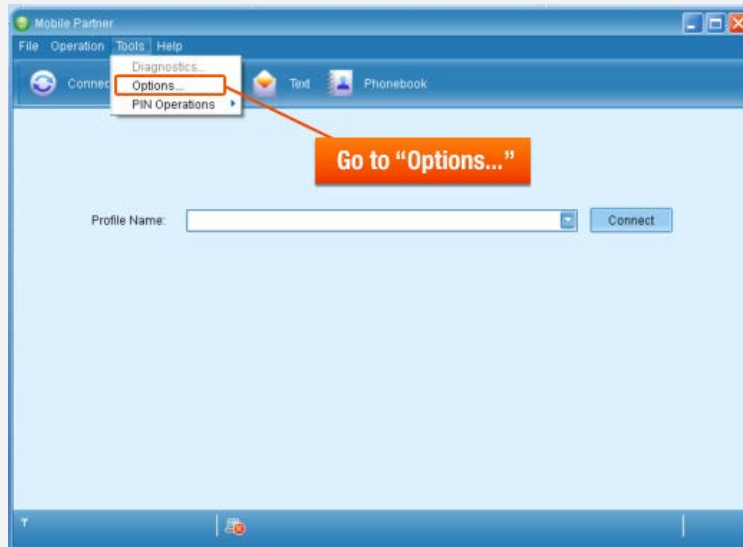
How To Configure Your Modem

General		U Mobile	
HUAWEI USB MODEM	ZTE USB MODEM	7.2Mbps and 42Mbps USB Modem	21Mbps MIFI Modem

- Step 1** Plug in the modem to the USB port
- Step 2** Install the modem drivers and Mobile Partner Client
- Step 3** Once installed, you can launch the application from the Mobile Partner Icon on your desktop.

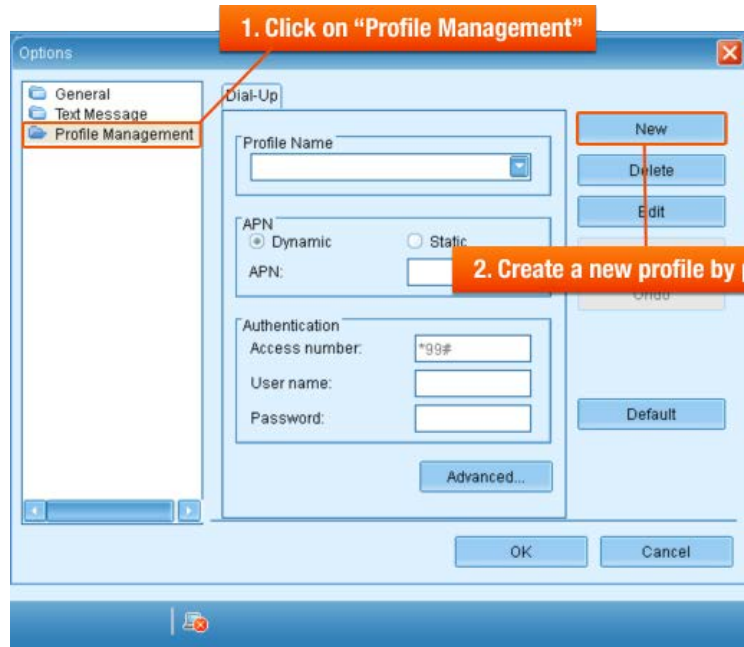


Step 4



Step 5

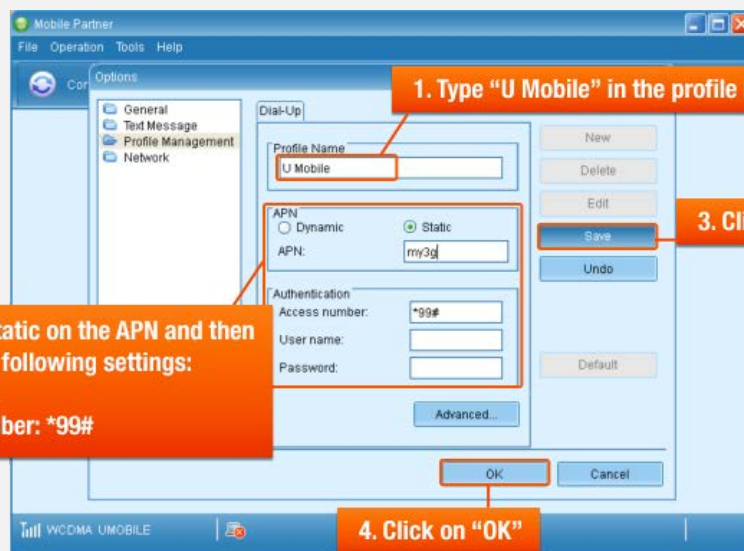
1. Click on "Profile Management"



2. Create a new profile by pressing "New"

5

Step 6



1. Type "U Mobile" in the profile name

**2. Select Static on the APN and then type in the following settings:
APN: my3g
Access number: *99#**

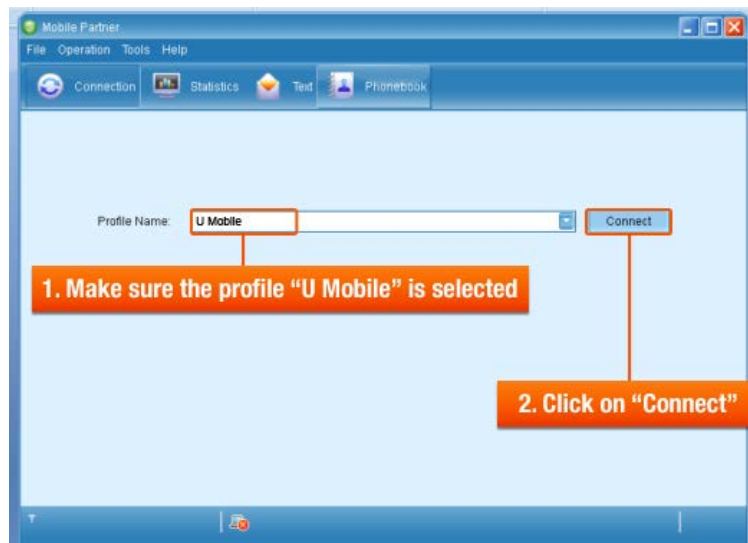
3. Click on "Save"

4. Click on "OK"

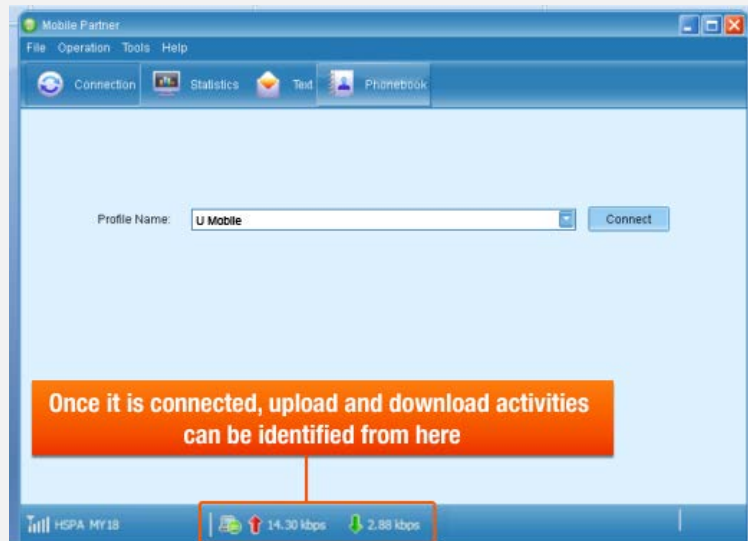
6

Step 7

7



Step 8



Downloads

- All Channels
- Planet Music
- Multiplayer Games
- U 乐园
- News Desk
- Ur Lifestyle

Support

- Locate Us
- Prepaid Top Up Locations
- Payment Methods
- Phone Settings
- How To Use
- FAQs
- Contact Us
- Content Provider Access

Quick Links

- Postpaid Plans
- Enterprise Mobile Plans
- Broadband Postpaid Plans
- Broadband Prepaid Plans

Online Self-care

- Personal Account Login
- Corporate Account Login
- Purchase SIM Pack