



Check Coverage

Find a Store

Switch to U Mobile

Tweet 0

Share 0

YouTube



Postpaid Plans

Prepaid Plans

Other Data Plans

Booster Plan

Coverage Locations

Check Your Connection Speed

Modem Installation

User Guide

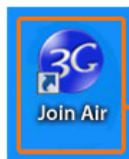
How To Configure Your Modem

General		U Mobile	
HUAWEI USB MODEM	ZTE USB MODEM	7.2Mbps and 42Mbps USB Modem	21Mbps MIFI Modem

Step 1 Plug in the modem to the USB port.

Step 2 Install the modem drivers and Join Air Client

Step 3 Once installed, you can launch the application from the Join Air Icon on your desktop.

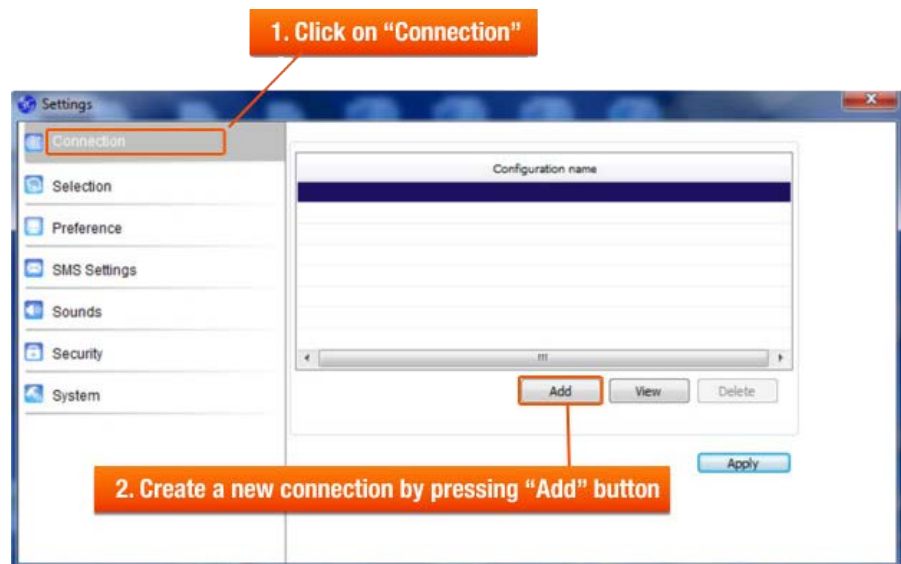


Double click on the Join Air icon

Step 4



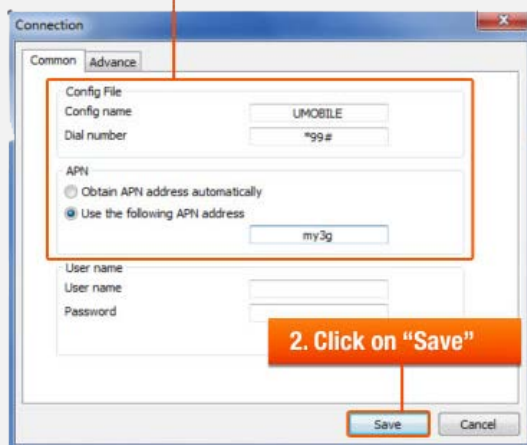
Step 5



Step 6 New Connection window will open

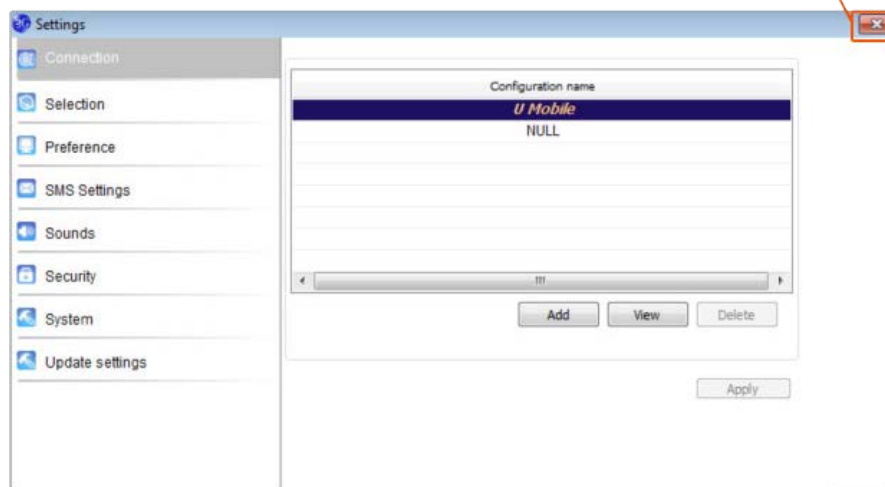
1. Select "Common" Tab and then type in the following settings:

- U Mobile in the "Config name" field
- *99# in the "Dial number" field
- Select "Use the following APN address" and type in my3g



Step 7

Click on the "X" button to close the window



Step 8

Click on the connector icon to connect to the internet



Step 9 Successful connection





Downloads

- All Channels
- Planet Music
- Multiplayer Games
- U 乐园
- News Desk
- Ur Lifestyle

Support

- Locate Us
- Prepaid Top Up Locations
- Payment Methods
- Phone Settings
- How To Use
- FAQs
- Contact Us
- Content Provider Access

Quick Links

- Postpaid Plans
- Enterprise Mobile Plans
- Broadband Postpaid Plans
- Broadband Prepaid Plans

Online Self-care

- Personal Account Login
- Corporate Account Login
- Purchase SIM Pack