



Microsoft AppLocale, Version 1.0

Readme File

Copyright © 2003 by Microsoft Corporation
All Rights Reserved

This document contains important, late-breaking information about AppLocale. Before installing AppLocale, please review this entire document. It contains critical information to ensure proper installation and use of the product.

[1.0 What is AppLocale](#)

[2.0 Common User Scenarios](#)

[3.0 System Requirements](#)

[4.0 How to Use AppLocale](#)

[4.1 AppLocale Setup](#)

[4.2 Adding/Removing Applications with AppLocale](#)

[4.3 Launching Applications with AppLocale](#)

[5.0 Known Issues](#)

[6.0 Tested Applications](#)

1.0 What is AppLocale

Unicode based platforms, such as Windows XP, emulate the language environment required to run non-Unicode applications by internally converting application's non-Unicode text data to Unicode using a system-wide variable commonly called the system locale (or language for non-Unicode applications). The language of the non-Unicode applications should be of the same script or family as the one defined by the system locale. Failing to meet this condition results in display of garbage characters in the UI of the application.

This approach has few usability limitations:

- Only an administrator has the ability of setting the system locale value.
- Setting the system locale requires a system reboot.
- Only one system locale can be set at a time.

AppLocale (or Application Locale) is a temporary solution to these limitations caused by non-Unicode applications running on the Unicode (UTF-16) based Windows XP. AppLocale detects the language of the legacy application and simulates a corresponding system locale for code-page to/from Unicode conversions.

IMPORTANT NOTES:

- If you frequently use non-Unicode applications in a given script (or set of languages), it is strongly recommended to set your system locale variable to the language of the target application and not to use AppLocale.
- Application developers should not consider AppLocale as an alternative to migrate their product to Unicode. Today, with Microsoft Layer for Unicode (MSLU), creating pure Unicode applications that can also be deployed on non-Unicode platforms --

such as Windows 98 -- has been made possible.



2.0 Common User Scenarios

2.1 A user is running the English version of Windows XP with the system locale set to English-US (Windows codepage 1252). This user wants to run a popular Japanese application that is code-page based. In order to run this app flawlessly in Windows XP, the user needs to set the system locale to Japanese (Windows cp 932) and reboot the machine. Two restrictions: the user might not be an administrator to force this setting change; and/or the user might not want to force a reboot.

AppLocale can be an attractive workaround in this scenario. The user does not need to be an administrator and no reboot is necessary.

2.2 An educational center in Israel has all its machines running localized Hebrew versions of Windows XP with their system locale set to Hebrew (Windows codepage 1255). This allows even non-Unicode Hebrew applications to run properly. But this educational center also offers Russian courses that use a legacy Russian application (required cp 1251). This Russian application cannot run unless the system locale of the target machines is changed to Russian and a reboot is forced. Keep in mind that with this new configuration, existing Hebrew legacy applications will stop functioning properly.

AppLocale can be an attractive workaround in this scenario. The system locale does not need to be changed to run the Russian application, thus allowing the user to still run all of his Hebrew legacy applications as well.



3.0 System Requirements

AppLocale is based on the new application compatibility technology introduced in Windows XP. It can only be installed on Windows XP (Home or Pro) or Windows 2003 Server. Please note that AppLocale setup requires administrator rights to the system since some system component files are being installed.



4.0 How To Use AppLocale

4.1 AppLocale Setup

The AppLocale setup program installs the following files on your system under %SystemRoot%\AppPatch directory:

- readme.rtf	This file
- apploc.exe	The AppLocale
applet used to launch the target application	
- alres***.dll	The localized
resource files for the AppLocale applet	
- allayer.dll	AppLocale specific

application compatibility engine
- .Custom\{deb7008b-681e-4a4a-8aae-cc833e8216ce}.sdb

AppLocale engine

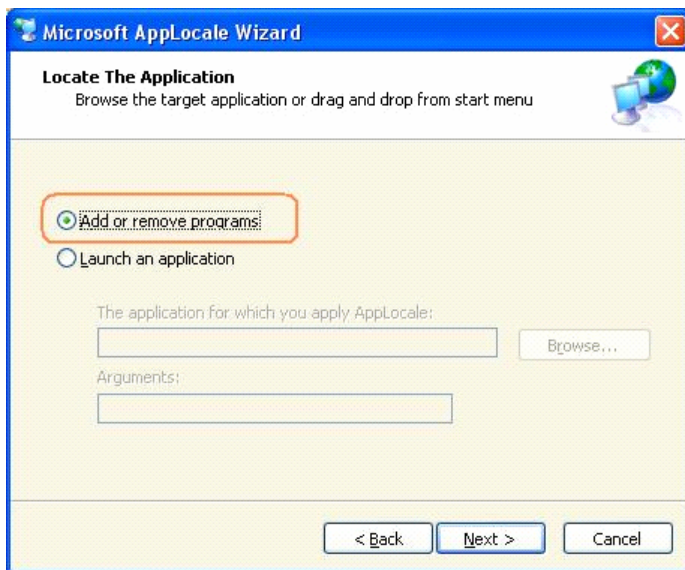
application database

The AppLocale setup program also installs a shortcut to the AppLocale wizard and to this readme file under: Start → All Programs → Microsoft AppLocale

 [top](#)

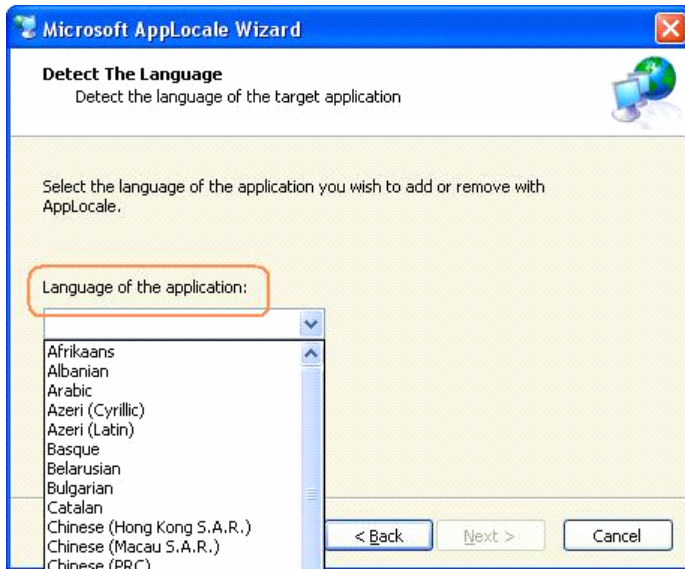
4.2 Adding/Removing Applications with AppLocale

Launch the AppLocale wizard accessible from Start → All Programs → Microsoft AppLocale. On the second page of the wizard entitled *Locate The Application*, select *Add or remove program* option.



To proceed, click on the Next button.

On the page titled *Detect The Language*, select the language of the target application that you wish to install or uninstall.



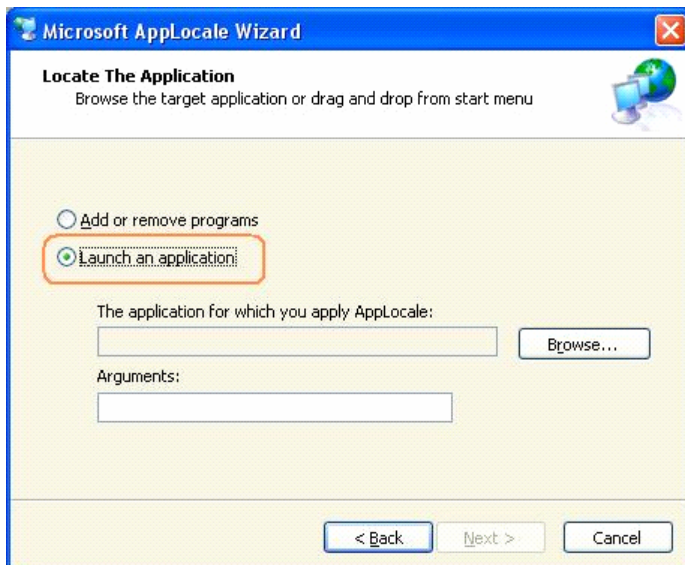
To proceed, click on the Next button and then click on the Finish button.

AppLocale will then launch the Windows Add or Remove Programs utility in a language- compatibility mode that matches the language of your target language.



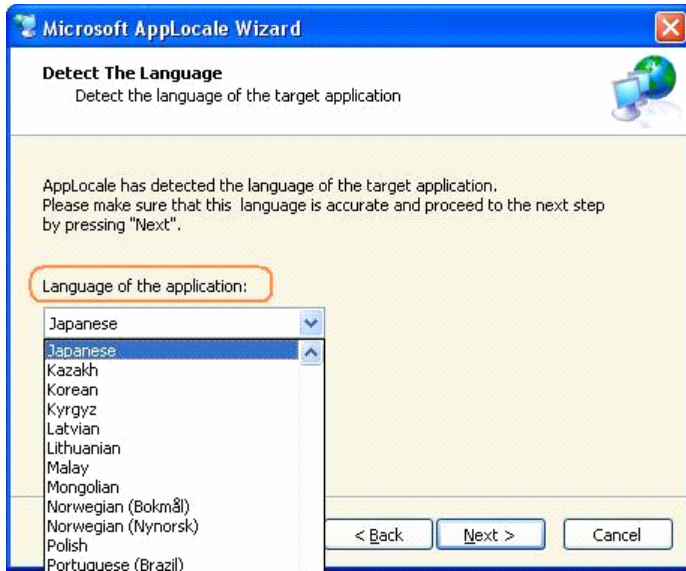
4.3 Launching Applications with AppLocale

Launch the AppLocale wizard accessible from Start → All Programs → Microsoft AppLocale. On the second page of the wizard entitled Locate The Application, select Add or remove program option and proceed by clicking the Next button. On the second page of the wizard entitled Locale The Application, select Launch an application option. You can then either use the Browse button to locate the target application or just drag and drop the applications icon on top of the current wizard page. If you wish to execute the target application with command line options, specify those options in the Arguments field.



To proceed, click on the Next button.

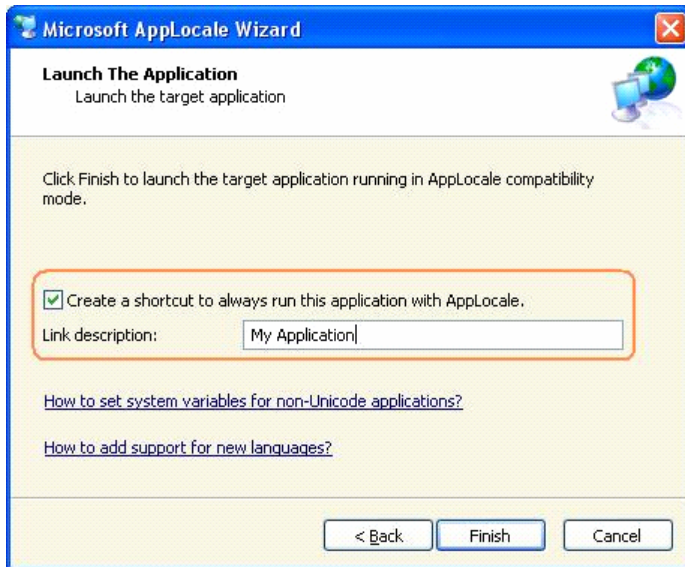
On the page titled Detect The Language, select the language of the target application that you wish to execute.



To proceed, click on the Next button.

On the final page of the wizard, users will experience one of the following three scenarios:

- If the language support for the target application is not installed on your machine, AppLocale will provide a link to learn how to install the language support that is required to run that application.
- If the language of the target application can already be accommodated by your system locale, AppLocale will simply launch the desired application without providing any compatibility support.
- If compatibility support is required, AppLocale will launch the target application in compatibility mode. It also offers you the possibility of creating a shortcut for this application for express execution in future. The shortcut will be created under the Start → All Programs → Microsoft AppLocale menu.



To complete the process, click on the Finish button.



5.0 Known Issues

Because of the nature of AppLocale's implementation and because each application is unique in the way it handles text data, AppLocale might cause application-specific side-effects and limitations that the user would not experience once the "system locale" is properly set. Some of these application-specific side-effects and limitations may be:

- Setup programs: for some for setup programs that require a reboot, it is strongly suggested to properly set the system locale to match the language of the target application during the installation.
- Server application: non-Unicode server applications have not been tested and are not supported by AppLocale.
- 16-bit application are not supported by AppLocale.
- Input Method Editors (IME) might not properly function in some private or owner drawn edit controls.
- File system support: creating localized file names or installing applications in localized folder names that do not match your system locale might result in broken functionality.
- Even after applying AppLocale some of the application's user interface might not render properly. This should not cause any functionality breaking and it is related to the application's specific way of handling non-Unicode data.
- Running Unicode applications or applications that handle their own character encoding conversions (e.g. Internet Explorer) in AppLocale compatibility mode

might result in unexpected results and breaking functionality.



6.0 Tested Applications

Extensive testing has been conducted on a large number of popular localized applications with AppLocale. Below is a summary of these applications and their level of support provided by AppLocale.

6.1 Applications that are fully functional and represent a minimum of breaking functionality when launched with AppLocale:

- Adobe Acrobat 5.0
- Adobe ImageREady 3.0
- CoreIDRAW 9
- Flash Macromedia 5.0
- FrontPage 2002
- JinShanKuaiYi 2002
- Outlook 2000
- Outlook Express
- Outlook XP
- Pagemaker 6.5 (needs the matching system locale for installation)
- PhotoImpact 7
- PhotoShop 7.0 (needs the matching system locale for installation)
- WordPerfect suite 8.0

6.2 Applications that are mostly functional but might have some minor breaking functionality when launched with AppLocale:

- Abba Bushot
- Adobe Acrobat Reader 5.0
- Atena Shoku Nin 2001
- AutoCAD2000LT
- Babylon 4.5
- ChaoJiJieBa 3000
- Daum Messenger 2.7
- DongFangKuaiChe XP
- Excel XP
- Fatawa
- Fude-Mame 13
- Genie messenger 4
- HaiZhiLanGe - The legend of Heroes V
- Hanako 11 (Special Pack)
- Hancom Office 2003
- HunMinJungEum Office 2000i
- HunMinJungEum Office XP
- Ichitaro 12
- Illustrator 10
- Internet Mo Yakuse!! Goma Bilingual 6 (needs the matching system locale for installation)
- JinShanCiBa 2003
- JinShanDuBa 2003

KV3000 ShaDuWang
Menahel 4.5
Money2002 Deluxe
Namo WebEditor 5.1
Namo WebEditor 5.01
Nature IME 6.5
Norton AntiVirus 2002
OASYS V8
PC-DIC 9
PhotoDraw 2000
PhotoExplorer 7
PhotoExpress 4.0
PhotoImpact 7
PhotoShop 5.5 ME
Picture It ! 2000
PowerDVD 3
PowerPoint XP
Project 2002
Publisher 2000 (Office 2000 SR1)
Quran
RealPlayer 8
Rising 2003
VedioStudio 6
Visio 2002
WinRAR
WinZip 8.1
Word XP
Works 2001 (needs the matching system locale for installation)
WPS Office 2000
Xiao Ao Jiang Hu
ZhiNengKuangPin

