

D-Link Quick Installation Guide

This product can be set up using any current Web browser, i.e., Internet Explorer or Netscape Navigator.



DI-704P
Ethernet Broadband
Router and Print Server

Before You Begin

1. If you purchased this router to share your high-speed Internet connection with other computers, you must have either an Ethernet-based Cable or DSL modem with an established Internet account from an Internet Service Provider (ISP).
2. It's best to use the same computer that is connected to your modem for configuring the DI-704P Broadband Router. The DI-704P acts as a DHCP server and will assign all the necessary IP address information on your network. **See Appendix at the end of this Quick Installation Guide or the Manual on the CD-ROM for setting each network adapter to automatically obtain an IP address.**

Check Your Package Contents



DI-704P Ethernet Broadband Router



CD-ROM (containing Manual, Warranty and Print Server Software for Windows)



Ethernet (Straight Through) Cable



5V DC Power Adapter



Using a power supply with a different voltage rating will damage and void the warranty of this product.

If any of the above items are missing, please contact your reseller.

1

Connecting The DI-704P Broadband Router To Your Network

- A.** First, connect the power adapter to the **receptor** at the back panel of the DI-704P and then plug the other end of the power adapter to a wall outlet or power strip. The Power LED will turn **ON** to indicate proper operation.

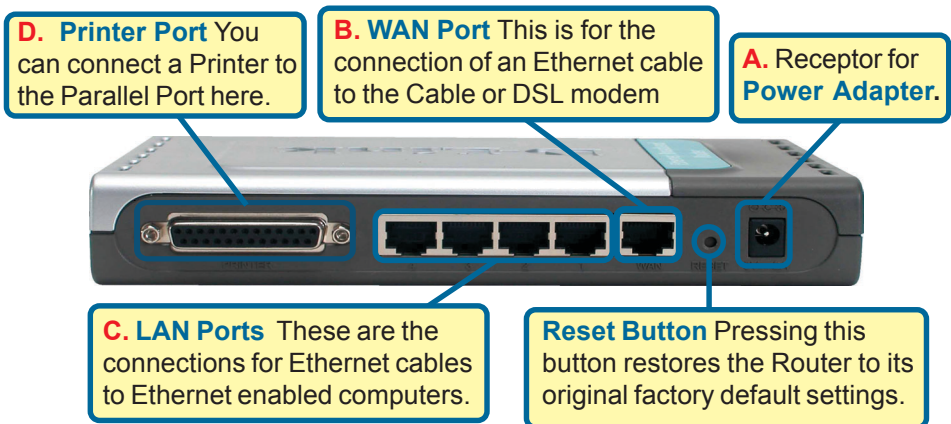
- B.** 1. Power off your Cable or DSL modem; some devices may not have a on/off switch and will require you to unplug the power adapter. Now, the DI-704P should be powered on and the Cable / DSL modem should be turned off.

2. Cable / DSL modem (**Power Off**) – DI-704P (**Power On**)
Connect an Ethernet cable to the Ethernet jack located on the Cable / DSL modem. After the Ethernet cable is securely connected, power on the Cable / DSL modem by turning on the unit or plugging in the power adapter.

3. Cable / DSL modem (**Power On**) – DI-704P (**Power On**)
Insert the other end of the Ethernet cable to the WAN PORT on the back panel of the DI-704P. The WAN LED light will illuminate to indicate proper connection. If the WAN LED is not illuminated, please go back to step B1 and repeat the instructions.

- C.** Insert an Ethernet cable to **LAN port 1** on the back panel of the DI-704P and an available Ethernet port on the network adapter in the computer you will use to configure the DI-704P. The LED light for LAN Port 1 will illuminate to indicate proper connection. (Note: The LAN Ports on the DI-704P are Auto-MDI/MDIX. Meaning you can use a straight-through or crossover-Ethernet cable to the LAN Ports.)

- D.** The parallel port on the DI-704P is used to connect printers only. Connect one end of the printer cable to your printer and the other end to the DI-704P.



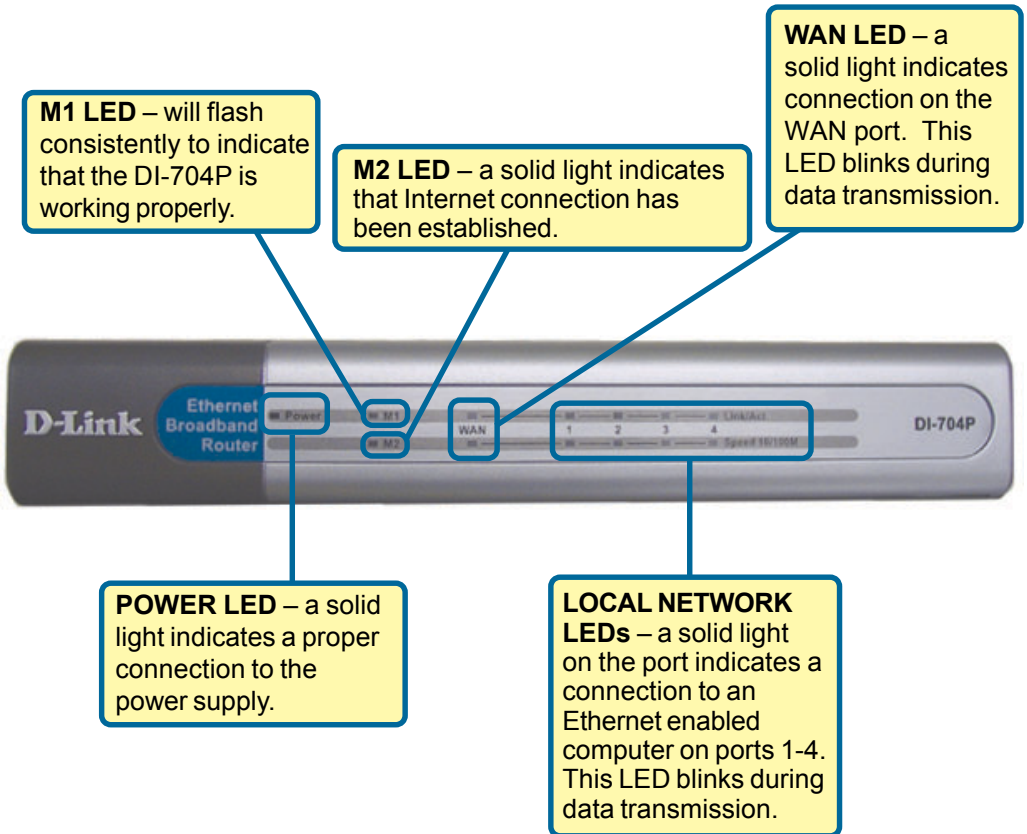
2

Restart Your Computer

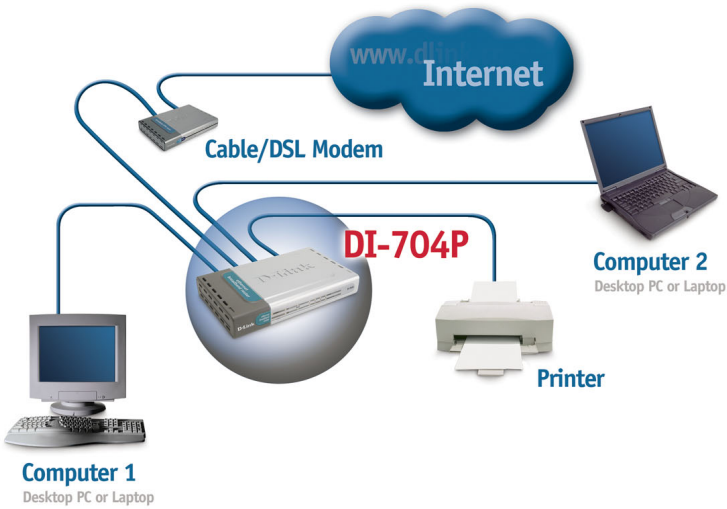
3

Connecting Additional Computers To The DI-704P

Using additional Ethernet (CAT5 UTP) cables, connect your Ethernet-equipped computers to the remaining Ethernet LAN ports on the back panel of the DI-704P



When you have completed the steps in this *Quick Installation Guide*, your connected network should look similar to this:



4

Using The Setup Wizard

Open your Web browser and type **“http://192.168.0.1”** into the URL address box. Then press the **Enter** or **Return** key.



The logon pop-up screen will appear.

Type **“admin”** for the username and leave the password field blank.

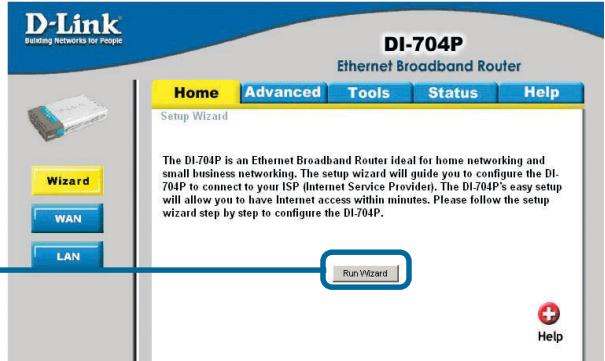


Click **OK**

4

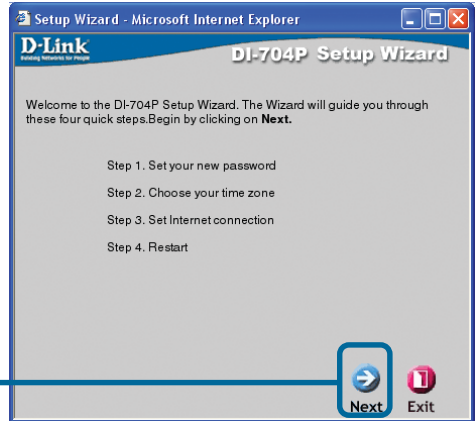
The Setup Wizard (continued)

Once you have logged in, the **Home** screen will appear.



Click **Run Wizard**

You will see the following screens



Click **Next**

Set up your new password.

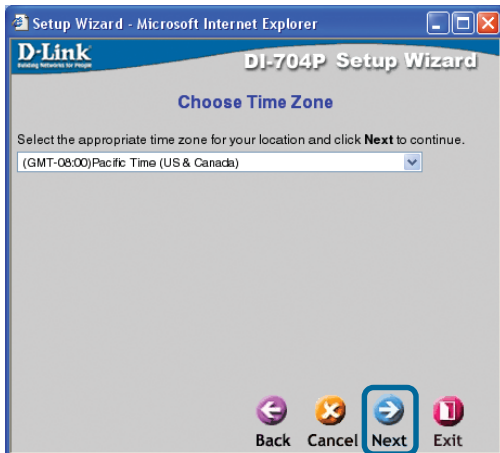
You have the option to establish a password.



Click **Next**

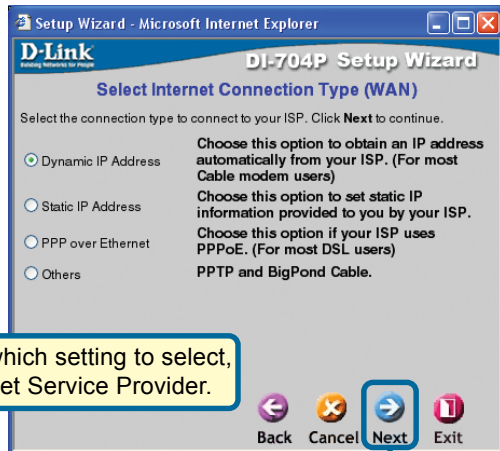
4 The Setup Wizard (continued)

Choose your time zone from the drop down list.



Click Next

Select your Internet Connection. You will be prompted to select the type of Internet connection for your router.

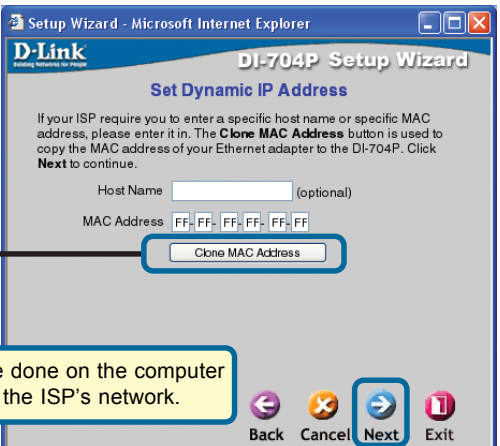


⚠ If you are unsure of which setting to select, please contact your Internet Service Provider.

Click Next

If you selected **Dynamic IP Address**, this screen will appear: (Used mainly for Cable Internet service.)

Click the **Clone MAC Address** button to automatically copy the MAC address of the network adapter in your computer. You can also manually type in the MAC address.



⚠ This setup should be done on the computer that is registered on the ISP's network.

Click Next

4

The Setup Wizard (continued)

If your ISP requires a **Static IP Address**, and this option is selected, then this screen will appear:

Enter the IP address information originally provided to you by your ISP. You will need to complete all the required fields.

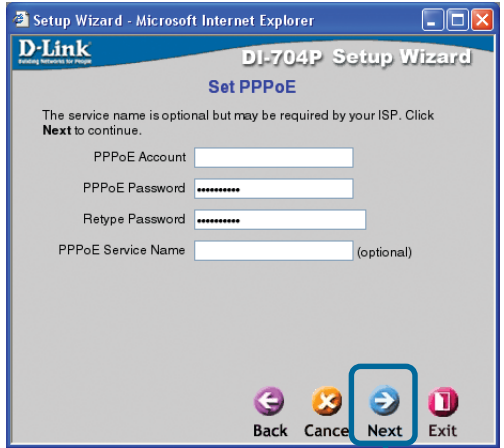


Click **Next**

If your ISP uses **PPPoE** (Point-to-Point Protocol over Ethernet), and this option is selected, then this screen will appear: (Used mainly for DSL Internet service.)

Please be sure to remove any existing PPPoE client software installed on your computers.

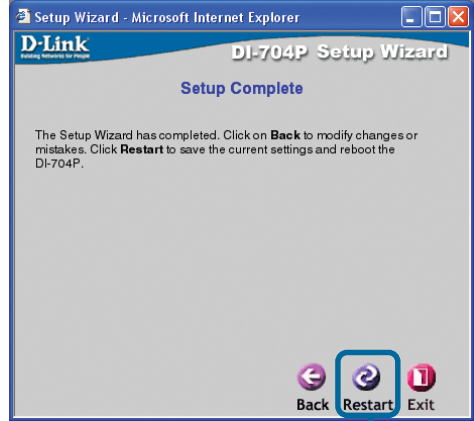
Enter in the username and password provided to you by your ISP.



Click **Next**

5

Your Setup is Complete!



Click **Restart**

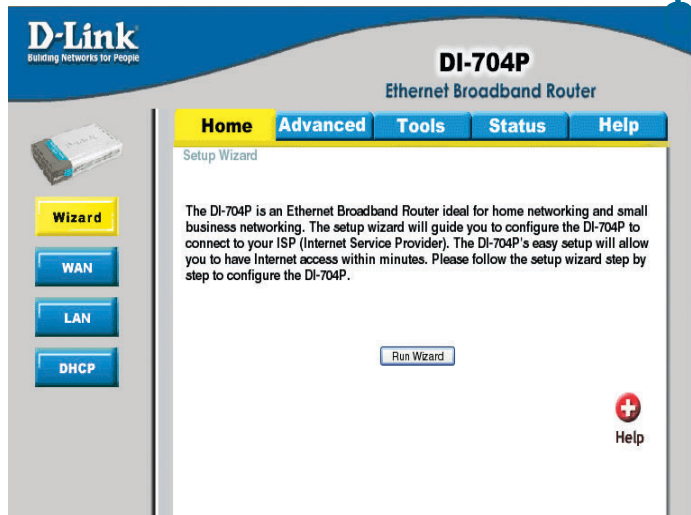
Test Internet Connection.

You will be returned to the **Home** tab.

Click to **Exit**

Then **relaunch** your Web browser (i.e., *Internet Explorer* or *Netscape Navigator*), to link to your favorite Web site to test your Internet connection.

For additional settings or information, refer to the **Advanced**, **Tools**, or **Status** tabs on the web-management interface; or to the Manual located on the CD.



APPENDIX

Installing the Print Server Software

Insert the installation CD-ROM into the CD-ROM drive. The following window will be shown automatically. If it is not, please run “autorun.exe” on the CD-ROM.

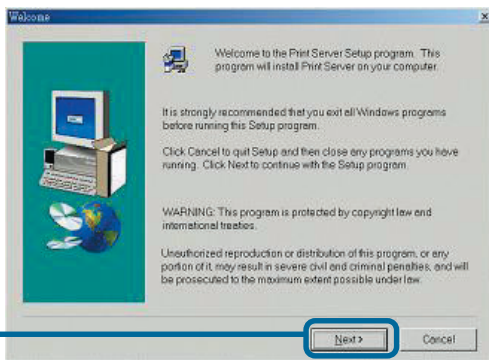
Click **Install Windows Printer Software**



Select your Windows operating system

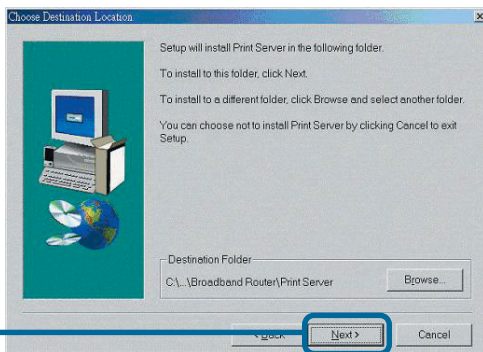
Wait until the following **Welcome** dialog appears.

Click **Next**



Select the destination folder.

Click **Next**

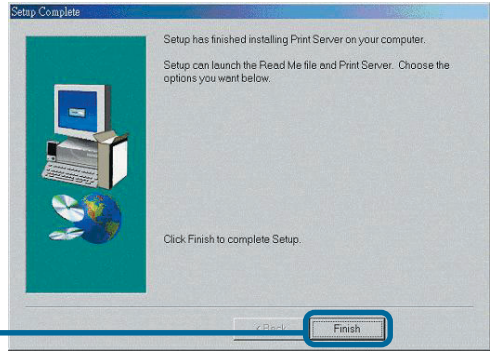


Installing the Print Server Software (continued)

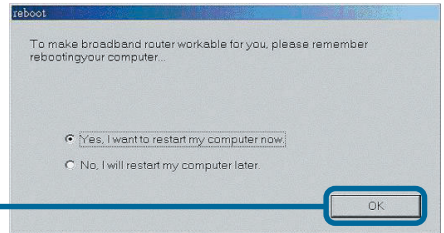
Then, the setup program will begin to install the programs into the destination folder.

When the following window is displayed.

Click **Finish**



Click **OK**



After rebooting your computer, the software installation procedure is finished.

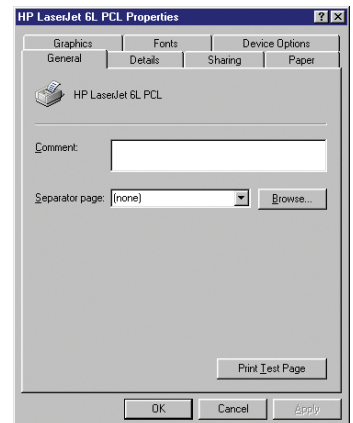
Configuring on Windows 98se/Me Platforms

After you finish the software installation procedure, your computer will be capable of network printing provided by the DI-704P. On a Windows 95/98 platform, open the **Printers** window in the **My Computer** menu.



Now, you can configure the print server of the DI-704P: Find out the corresponding icon of your *printer*, for example, the **HP LaserJet 6L**. Right click on that icon, and then select **Properties**.

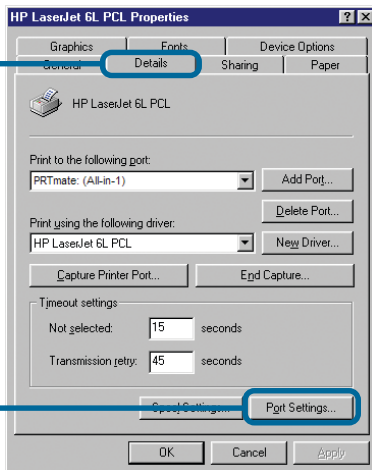
The following screen appears:



Configuring on Windows 98se/Me Platforms (continued)

Click on the **Details** tab

Choose the “PRTmate: (All-in-1)” from the list attached at the **Print To** item. Be sure that the **Printer Driver** item is configured to the correct driver of your *printer*.



Click **Port Settings**

Type in the IP address of the DI-704P.

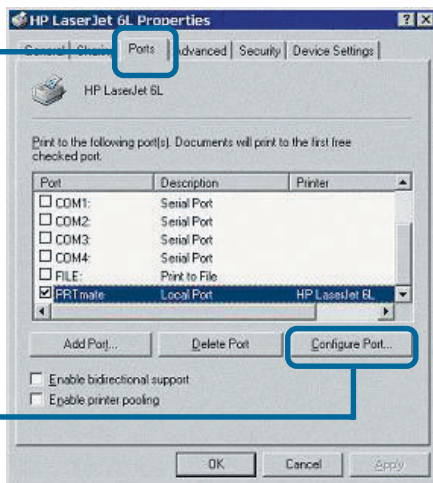


Click **OK**

Configuring on Windows 2000/XP Platforms

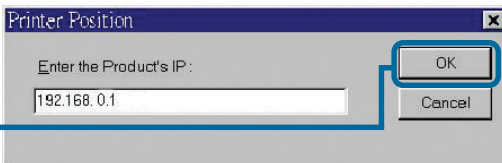
Click **Port**

The configuration procedure for a Windows 2000/XP platform is similar to that of Windows 95/98 except the screen of printer **Properties**:



Click **Configure Port**

Type in the IP address of the DI-704P.

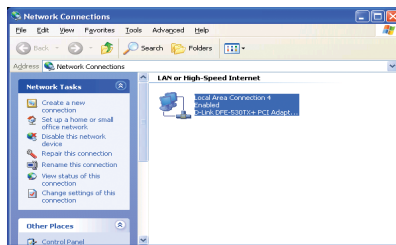


Click **OK**

(Note: Screen shots are taken in Windows 2000, similar screens will appear in Windows XP.)

APPENDIX (continued)

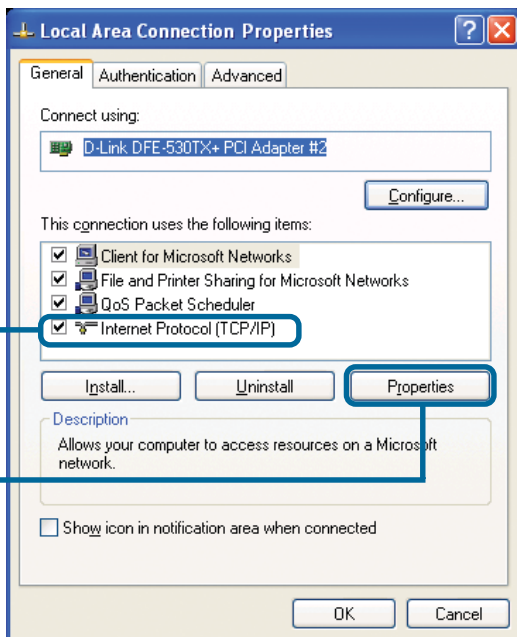
To connect to the network, make sure the network adapter in your computer is configured properly. Here's how to configure the network adapter to obtain an IP address automatically for the DI-704P Broadband Router.



For **Microsoft Windows XP**: Go to **Start** > **right click** on **My Network Places** > select **Properties** > **Right click** on the **Network Connection** associated with the Ethernet adapter and select **Properties** (i.e., D-Link DFE-530TX+).

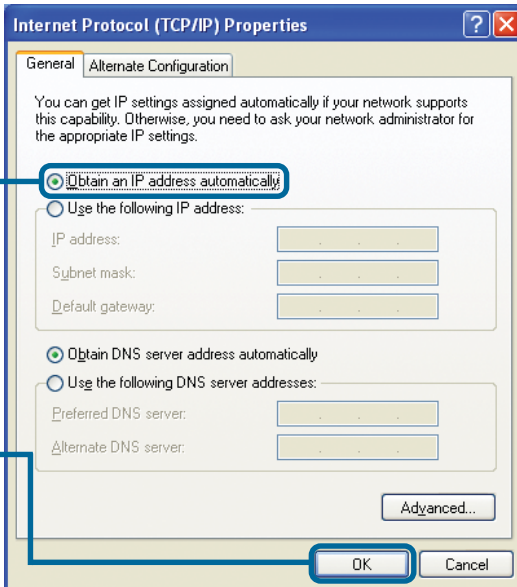
Click **Internet Protocol (TCP/IP)**

Click **Properties**



Select **Obtain an IP address automatically**

Click **OK**

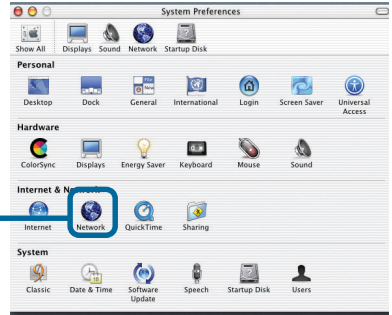


Restart your computer

For Apple Macintosh OS X:

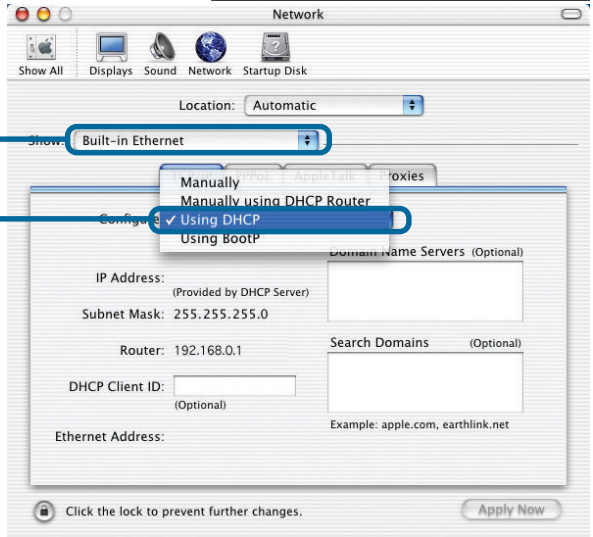
Go to the Apple Menu Click on **System Preferences** and Select **Network**

Click on **Network**



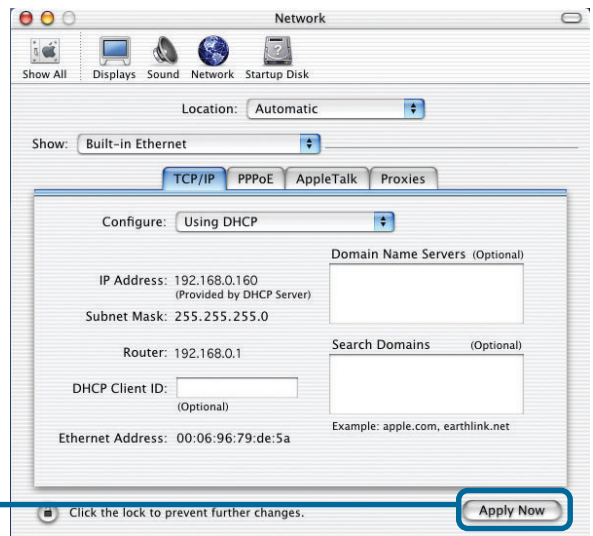
Select **Built-in Ethernet** in the show pull down menu

Select **Using DHCP** in the Configure pull down menu



Click on **Apply Now**

The IP address information, the Subnet Mask, the Router's IP address and the Ethernet adapter address will appear



Notes

Notes

Technical Support

You can find software updates and user documentation on the D-Link website.

D-Link provides free technical support for customers within the United States and within Canada for the duration of the warranty period on this product.

U.S. and Canadian customers can contact D-Link technical support through our website, or by phone.

Tech Support for customers within the United States:

D-Link Technical Support over the Telephone:

(877) 453-5465

24 hours a day, seven days a week.

D-Link Technical Support over the Internet:

<http://support.dlink.com>

email:support@dlink.com

Tech Support for customers within Canada:

D-Link Technical Support over the Telephone:

(800) 361-5265

Monday to Friday 8:30am to 9:00pm EST

D-Link Technical Support over the Internet:

<http://support.dlink.ca>

email:support@dlink.ca

