



---

# Nero DiscCopy Manual

---

**Nero AG**



## **Copyright and Trademark Information**

The Nero DiscCopy manual and all its contents are protected by copyright and are the property of Nero AG. All rights reserved. This manual contains material that is protected by internationally valid copyright. No part of this manual may be reproduced, transmitted or transcribed without the express written permission of Nero AG.

Nero AG rejects any claims that transcend the clauses of the guarantee rights. Nero AG does not accept any liability for the correctness of the content of the Nero DiscCopy manual. The contents of the software supplied, as well as of the Nero DiscCopy manual, may be changed without prior warning.

All trade names and trademarks are the property of their respective owners.  
The trademarks mentioned here are named for informational purposes only.

Copyright © 2007 Nero AG and its licensors. All rights reserved..

REV 2.0, SW 1.0.0.0

## Contents





|          |                            |           |
|----------|----------------------------|-----------|
| <b>1</b> | <b>General information</b> | <b>4</b>  |
| 1.1      | About the manual           | 4         |
| 1.2      | About Nero DiscCopy        | 4         |
| 1.3      | Nero DiscCopy versions     | 4         |
| <b>2</b> | <b>System requirements</b> | <b>5</b>  |
| 2.1      | Operating systems          | 5         |
| 2.2      | Discs supported            | 5         |
| <b>3</b> | <b>Nero DiscCopy</b>       | <b>6</b>  |
| 3.1      | Displaying Nero DiscCopy   | 6         |
| 3.2      | Settings                   | 6         |
| 3.2.1    | Defining settings          | 8         |
| 3.3      | Copy and burn process      | 8         |
| 3.3.1    | Copying and burning a disc | 9         |
| <b>4</b> | <b>List of figures</b>     | <b>10</b> |
| <b>5</b> | <b>Index</b>               | <b>11</b> |
| <b>6</b> | <b>Contact</b>             | <b>12</b> |

# 1 General information

## 1.1 About the manual

This manual is designed for all users who want to become acquainted with the proper use of Nero DiscCopy. It is process-based and explains how to reach a particular objective on a step-by-basis.

In order to make best use of this manual, please note the following conventions:

| Symbol  | Meaning   |
|---|---|
|  | Indicates warnings, preconditions or instructions that have to be followed strictly.                                |
|  | Indicates additional information or advice.   |
| <b>1.</b> Start ...   | A number at the beginning of a line indicates a request for action. Carry out these actions in the order specified. |
|  | Indicates an intermediate result.   |
|  | Indicates a result.   |
| <b>OK</b>   | Indicates text passages or buttons that appear in the program interface. They are shown in bold face.               |
| <u><a href="#">Chapter</a></u>  | Indicates references to other chapters. They are executed as links and are shown in red and underlined.             |
| [...]   | Indicates keyboard shortcuts for entering commands.   |

## 1.2 About Nero DiscCopy

Windows Vista features so-called gadgets which appear in the sidebar or on the desktop and are a quick and easy way of executing frequently required operations. Nero DiscCopy is one of these gadgets for Windows Vista and allows you to easily copy and burn discs directly or store them as an image file.

## 1.3 Nero DiscCopy versions

Nero DiscCopy is available with the full range of functions in all versions of the Nero 7 Suite.

## 2 System requirements

### 2.1 Operating systems

- Microsoft® Windows Vista™

### 2.2 Discs supported

- All optical discs accepted by the connected recorders are suitable as source media.
- All discs that correspond to the source medium are suitable as destination media.
- The following discs are supported in principle: CD-R, CD-RW, DVD-R, DVD-RW, DVD+R, DVD+RW, DVD-RAM, DVD+R DL9, DVD-R DL9, Blu-ray BD-R and BD-RE, HD DVD-R, HD DVD-RW.

### 3 Nero DiscCopy

On a computer running the Windows Vista™ operating system, Nero DiscCopy is automatically available in the sidebar following installation of the Nero Suite. It can be displayed using the **Gadgets** button.

#### 3.1 Displaying Nero DiscCopy

To display Nero DiscCopy in the sidebar of Windows Vista™, proceed as follows:

1. Click on the **+** sign on the **Gadgets** button in the top right of the sidebar.

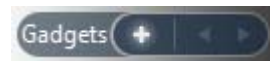


Fig. 1: **Gadgets** button

→ A window showing all the gadgets is displayed.



Fig. 2: **Gadgets** window

2. Click on the **Nero DiscCopy** icon and drag it to the sidebar or onto the desktop as you wish.



Fig. 3: Nero DiscCopy icon

→ The Nero DiscCopy gadget is then available. If you dragged the icon to the sidebar you can access it whenever you need.

#### 3.2 Settings

In the Settings window you can define the source and destination drive, specify the number of copies to be burned, and define the actions to take place after the burn process. You can

also select a number of display options and specify the folder where an image file is to be stored.

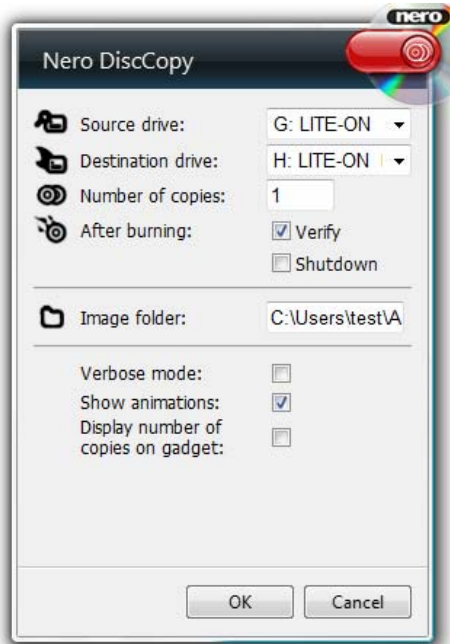


Fig. 4: Settings window

The following input options are available in the Settings window:

| Menu icons   |  |
|--|--|
| <b>Source drive</b><br>drop-down menu                  | Automatically lists all connected disc drives and offers them for selection as the source drive.   |
| <b>Destination drive</b><br>drop-down menu             | Automatically lists all connected recorders and offers them for selection as the destination drive.  |
| <b>Number of copies</b><br>text box                    | Defines how many copies of the source disc are to be created.  |
| <b>After burning</b><br>area                           | Defines whether the data in the copy should be <b>verified</b> after burning and/or whether the computer should be <b>shut down</b> after burning.               |
| <b>Image folder</b><br>text box                        | Defines the folder where an image file is to be stored.  |
| <b>Show all messages</b><br>check box                  | Defines whether fly-out windows should be displayed for all actions (box checked) or only for error messages and questions directed at the user (box unchecked). |
| <b>Show animation</b><br>check box                     | Enables/disables a small animation of the Nero DiscCopy icon to accompany the copy/burn process.   |
| <b>Display number of copies on gadget</b><br>check box | Defines that the number of copies to be created will be displayed on the Nero DiscCopy icon and can also be adjusted there with the help of arrow buttons.       |

### 3.2.1 Defining settings

To define the settings, proceed as follows:




1. Move the mouse pointer near the **Nero DiscCopy** icon.
  - ➔ The  button bar is displayed.
2. Click on the  button.
  - ➔ The Settings window is displayed.
3. Select the source drive you want in the **Source drive** drop-down menu.
4. Select the destination drive you want in the **Destination drive** drop-down menu.
5. Specify the number of copies you want in the **Number of copies** text box.
6. Check the **Verify** box if you want the data to be verified once burning is complete.
7. Check the **Shut down** box if you want the computer to be shut down once burning is complete.
8. If you do not have a recorder connected to your computer, in the **Image file** drop-down menu select the path and folder where you want to store the image file.
9. Check/uncheck the **Show all messages** box if you want to be notified with a fly-out window for every action/only for error messages and questions directed at the user.
10. Check/uncheck the **Show animation** box if a small animation of the Nero DiscCopy icon is to accompany the copy/burn process.
11. Check/uncheck the **Display number of copies on gadget** box if the number is to be displayed on the Nero DiscCopy icon and can be adjusted there.



Fig. 5: Nero DiscCopy icon showing the number of copies

12. Click on the **OK** button.
  - ➔ Your chosen settings are accepted and the Settings window is closed.

### 3.3 Copy and burn process

Using Nero DiscCopy you can either copy and burn discs directly to a blank disc or create an image file of a disc for burning later. The  button is used for this.

In its default setting, Nero DiscCopy will create exactly one copy of the source disc. Depending on the disc drives connected, the copy/burn process will proceed as follows:

- **There are at least two disc drives connected to the computer, at least one of these is a recorder**  
The contents of the source disc in the source drive are burned directly "on-the-fly" to the destination disc in the recorder.



If two to 99 copies are required, the contents of the source disc are temporarily stored on the hard drive and from there automatically burned to the destination discs in succession.

- **There is one recorder connected to the computer, but no other disc drive**  
The contents of the source disc are read and temporarily stored on the hard drive. The source disc is ejected and a prompt to insert the blank disc displayed. As soon as this is inserted, the first copy is burned.
- **There is one disc drive without a recorder function connected to the computer**  
The contents of the source disc are read and stored as an image file on the hard drive in the folder defined in the Settings window (see [Defining settings](#)).

### 3.3.1 Copying and burning a disc

To copy and burn a disc, proceed as follows:


1. Adjust the settings to your requirements if necessary (see [Defining settings](#)).
2. Insert the source disc in the disc drive.
3. If there is a further drive with recorder function connected to your computer, insert the destination disc in this destination drive.
4. Click on the  button.
  - ➔ The copy/burn process is started; a fly-out window keeps you informed of the progress.



Fig. 6: Fly-out window for the copy/burn process

- ➔ You have successfully copied and burned a disc.



## 4 List of figures

- Fig. 1: **Gadgets** button .....6
- Fig. 2: **Gadgets** window .....6
- Fig. 3: Nero DiscCopy icon.....6
- Fig. 4: Settings window.....7
- Fig. 5: Nero DiscCopy icon showing the number of copies.....8
- Fig. 6: Fly-out window for the copy/burn process.....9

## 5 Index

### A

After Burning..... 7

### C

Contact..... 12

Conventions..... 4

Copy/Burn Process..... 8, 9

### D

Destination Drive..... 7

Discs Supported..... 5

Display Number of Copies on Gadget..... 7

### G

Gadget..... 4, 6

### I

Image File..... 4, 7, 8

Image Folder..... 7

### N

#### Nero DiscCopy

Copy/Burn Process..... 8

Displaying..... 6

Settings..... 6

Number of Copies..... 7

### O

Operating System..... 5

### S

#### Settings

After Burning..... 7

Defining..... 8

Destination Drive..... 7

Display Number of Copies on Gadget..... 7

Image Folder..... 7

Number of Copies..... 7

Settings Window..... 8

Show All Messages..... 7

Show Animation..... 7

Settings..... 6

Source Drive..... 7

Settings..... 8

Settings Window..... 8

Show All Messages..... 7

Show Animation..... 7

Source Drive..... 7

System Requirements..... 5

### T

Target Group..... 4

### V

Versions..... 4

## 6 Contact

**Nero DiscCopy** is a Nero AG product.

# Nero DiscCopy

Nero AG  
Im Stoeckmaedle 18  
76307 Karlsbad  
Germany

**Web:** [www.nero.com](http://www.nero.com)  
**Help:** <http://support.nero.com>  
**Fax:** [+49 724 892 8499](tel:+497248928499)

Copyright © 2007 Nero AG and its licensors. All rights reserved.