



## Nero InfoTool Manual

Nero AG



## **Copyright and Trademark Information**

The Nero InfoTool manual and all its contents are protected by copyright and are the property of Nero AG. All rights reserved. This manual contains material that is protected by internationally valid copyright. No part of this manual may be reproduced, transmitted or transcribed without the express written permission of Nero AG.

Nero AG rejects any claims that transcend the clauses of the guarantee rights. Nero AG does not undertake any liability for the correctness of the content of the Nero InfoTool manual. The contents of the software supplied, as well as of the Nero InfoTool manual, may be changed without prior warning.

All trade names and trademarks are the property of their respective owners.

The trademarks mentioned here are named for information purposes only.

Copyright © 2007 Nero AG and its licensors. All rights reserved.

SW 4.99.6.0

## Contents





<b>1</b>	<b>General information</b>	<b>4</b>
1.1	About the manual	4
1.2	About Nero InfoTool	4
<b>2</b>	<b>Technical information</b>	<b>5</b>
2.1	System requirements	5
<b>3</b>	<b>Launching the Program</b>	<b>6</b>
3.1	Starting Nero InfoTool via Nero StartSmart	6
<b>4</b>	<b>Nero InfoTool</b>	<b>7</b>
4.1	Saving and printing the log	10
4.1.1	Saving the log	10
4.1.2	Printing the log	10
4.2	Refreshing the log	11
4.3	Changing the language	11
4.4	Verifying system requirements for Blue-ray and HD DVD	11
<b>5</b>	<b>List of figures</b>	<b>12</b>
<b>6</b>	<b>Index</b>	<b>13</b>
<b>7</b>	<b>Contact</b>	<b>14</b>

# 1 General information

## 1.1 About the manual

This manual is intended for all users who want to find out how to use Nero InfoTool. It is task-based and explains how to achieve a particular objective on a step-by-basis.

In order to make best use of this manual, please note the following conventions:

Symbol	Meaning
	Indicates warnings, preconditions or instructions that have to be followed strictly.
	Indicates additional information or advice.
<b>1.</b> Start ...	A number at the beginning of a line indicates a request for action. Carry out these actions in the order specified.
	Indicates an intermediate result.
	Indicates a result.
<b>OK</b>	Indicates text passages or buttons that appear in the program interface. They are shown in bold face.
<u>Chapter</u>	Indicates references to other chapters. They are executed as links and are shown in red and underlined.
[...]	Indicates keyboard shortcuts for entering commands.

## 1.2 About Nero InfoTool

Nero InfoTool allows you to call up information about the most important features of installed drives, inserted discs, installed software, and much more. You obtain detailed data on drive properties such as firmware, buffer size, serial number, production date, and, for DVD drives, the current DVD region code. Furthermore, Nero InfoTool tells you the name and version number of the operating system, the ASPI manager, and the installed burning applications and also tells you about the hardware configuration of the computer.

## 2 Technical information


### 2.1 System requirements

Nero InfoTool is installed together with the Nero Suite and its system requirements are the same. You can find more detailed information on the system requirements in the Nero QuickStart Guide.

## 3 Launching the Program

### 3.1 Starting Nero InfoTool via Nero StartSmart

To start Nero InfoTool via Nero StartSmart, proceed as follows:

1. Click on the Nero StartSmart icon.  
→ The **Nero StartSmart** window opens.
2. Click the  button.  
→ The list of Nero applications is displayed.

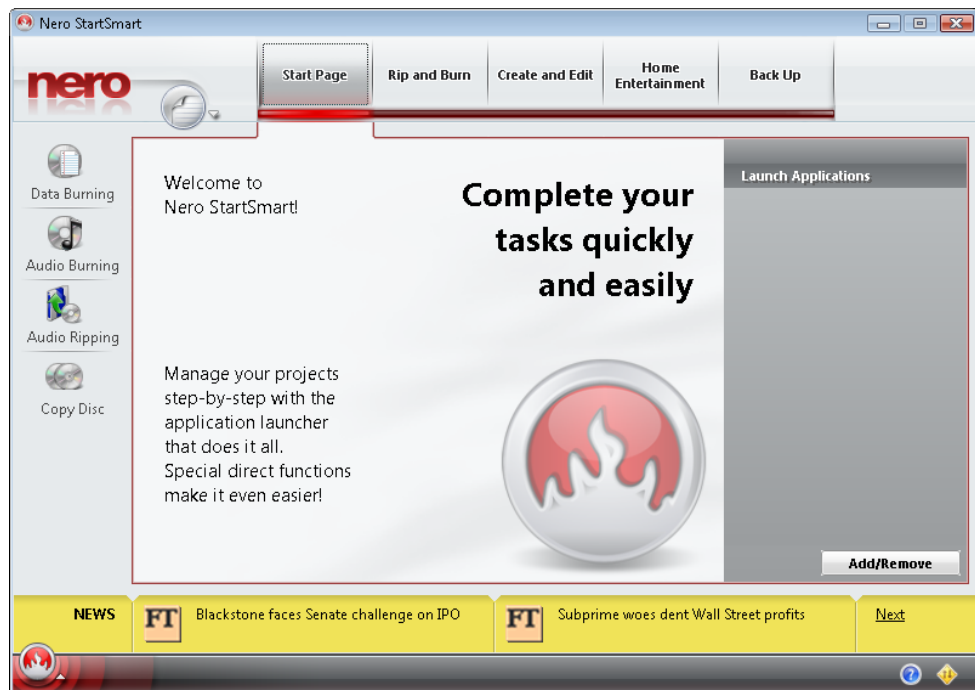


Abb. 1: Nero StartSmart

3. Select the **Nero InfoTool** entry in the **Tools** list box.  
→ The **Nero InfoTool** window opens.  
→ You have launched Nero InfoTool via Nero StartSmart.

## 4 Nero InfoTool

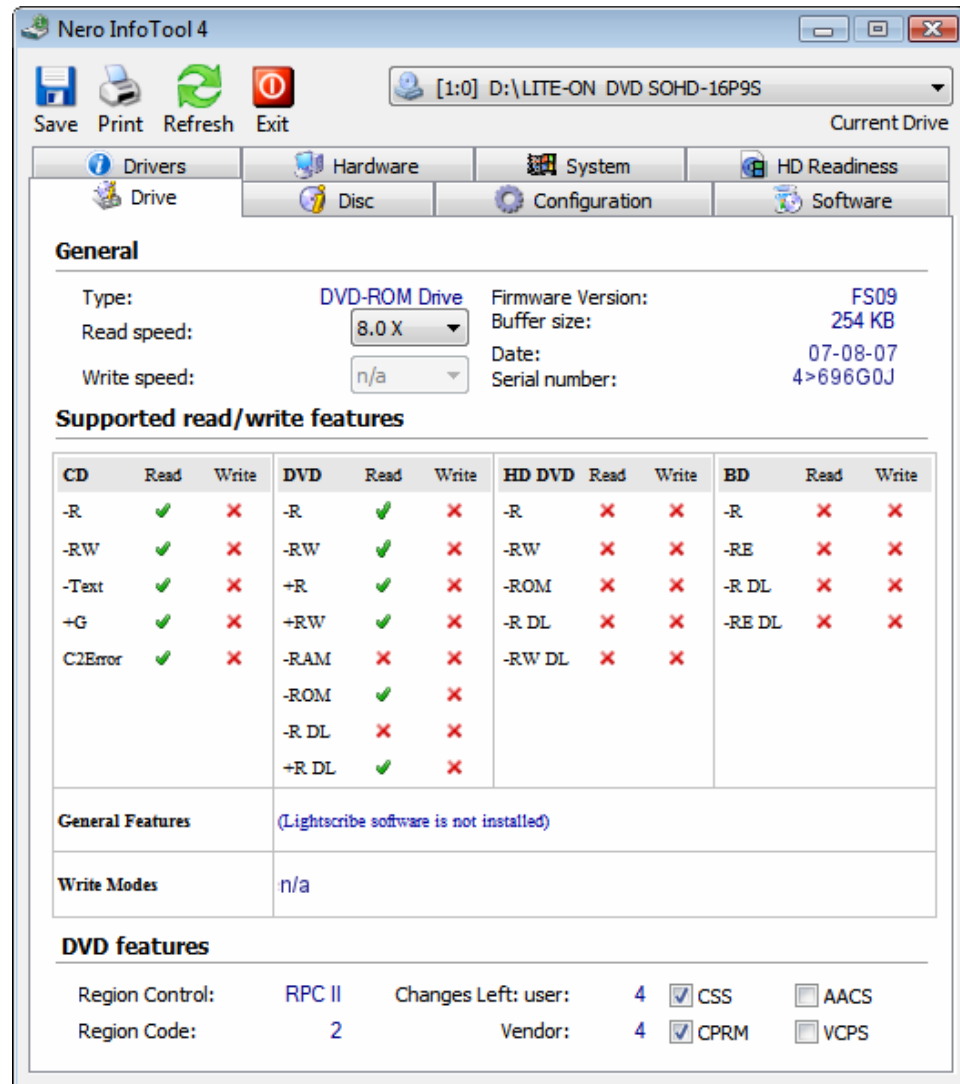


Fig. 2: Nero InfoTool window; Drive tab

The following setting options are available in the **Nero InfoTool** window:

Drive list box	Displays all connected recorders for selection.
<b>Save</b> button	Opens the <b>Nero InfoTool – Save/Print</b> window and saves the log generated by Nero InfoTool.
<b>Print</b> button	Opens the <b>Nero InfoTool – Save/Print</b> window and prints the log generated by Nero InfoTool.
<b>Refresh</b> button	Refreshes the log generated by Nero InfoTool.
<b>Options</b> button	Sets the language of the program and the log.
<b>Exit</b> button	Closes Nero InfoTool.

Drive tab	
<b>General area</b>	Displays general information about the installed recorder.
<b>Supported read features area</b>	Displays the formats that the installed recorder can read.
<b>Supported write features area</b>	Displays the formats that the installed recorder can write.
<b>DVD features area</b>	Displays any additional DVD burning features of the recorder.

Disc tab	
<b>General area</b>	Displays general information about the inserted disc, such as the type or capacity.
<b>Extended Information area</b>	Displays extended information about the inserted disc, such as the number of tracks and sessions on the CD.
<b>Content area</b>	Displays information about the contents of the inserted disc, such as the name or creation date of the disc.

Configuration tab	
Selection tree	Displays the driver(s) of the selected main entry when it is expanded.
<b>Driver information area</b>	Displays information about the driver selected in the tree.

Software tab	
Software list	Displays the version numbers of the installed Nero applications.

Drivers tab	
Drivers area	Displays all of the software drivers installed on the computer.
<b>Video Codecs area</b>	Displays all of the video codecs installed on the computer.
<b>Audio Codecs area</b>	Displays all of the audio codecs installed on the computer.

Hardware tab	
<b>System area</b>	Displays information about the computer hardware.
<b>Peripherals area</b>	Displays information about the computer's peripherals, such as audio output devices.

System tab	
<b>System information area</b>	Displays information about the installed operating system, DirectX version, and browser.



HD Readiness tab	
<b>Verify the system requirements</b> drop-down menu	Displays the tasks for which the system requirements are verified.
<b>Your system</b> display area	Displays a table that lists the tested components, information about whether an upgrade is required, and the details of the tested components.
Link display area	Displays whether system upgrades are required and provides a link to the system requirements list.
<b>Your Nero version</b> display area	Displays whether the current Nero configuration supports the task that you selected in the drop-down menu.

## 4.1 Saving and printing the log

When you open Nero InfoTool as described in the chapter '[Launching the Program](#)', a log is automatically generated. You can save or print this log.

### 4.1.1 Saving the log

To save the log, proceed as follows:

1. To save the log, click on the **Save** button.
  - The **Nero InfoTool – Save/Print** window is opened.
2. If you do not wish to include information from certain areas:
  1. Uncheck the boxes for the areas that you wish to exclude in the check box area of the **Nero InfoTool – Save/Print** window.
  2. To see what the log will look like without the unchecked areas, click on the **Preview** button.
    - The log preview is refreshed.
3. Click on the **Save** button.
  - The **Save As** window is opened.
4. Select the folder where you want to save the log.
5. Enter the name to save the log with in the **File name** text box.
  - You have saved the log as a text file.

### 4.1.2 Printing the log

To print the log, proceed as follows:

1. To print the log, click on the **Print** button.
  - The **Nero InfoTool – Save/Print** window is opened.
2. If you do not wish to include information from certain areas:
  1. Uncheck the boxes for the areas that you wish to exclude in the check box area of the **Nero InfoTool – Save/Print** window.
  2. To see what the log will look like without the unchecked areas, click on the **Preview** button.
    - The log preview is refreshed.
3. Click on the **Print** button.
  - The **Print** window is opened.
4. Apply the desired print settings and then click on the **Print** button.
  - You have printed the log.

## 4.2 Refreshing the log

To refresh the log, proceed as follows:

1. Click the **Refresh log** button.
  - ➔ The **Nero InfoTool – Retrieving Information** window is opened. You have refreshed the log.

## 4.3 Changing the language

To change the language of Nero InfoTool and the log, proceed as follows:

1. Click on the **Options** button.
  - ➔ The **Options** window is opened.
2. Select the desired **Language** from the drop-down menu and confirm your selection.
3. Restart Nero InfoTool to apply the language change.
  - ➔ You have changed the language.

## 4.4 Verifying system requirements for Blue-ray and HD DVD

With Nero InfoTool you can check your system to see if it supports Blu-ray Discs and HD DVDs.

To display any necessary upgrades for Blu-ray Disc support, proceed as follows:

1. Click the HD Readiness tab.
2. Select the desired task from the **Verify the system requirements** drop-down menu.
  - ➔ Depending on the selected entry, the tested components, information about any required upgrades, and the details of the tested components are displayed in the area below the **Verify the system requirements** list box.  
The display area on the left indicates whether your system needs to be upgraded for the selected task. A link to the system requirements for the selected task is provided here.  
The Your Nero version display area provides information about whether the current Nero configuration supports the selected task.

# 5 List of figures

Abb. 1: Nero StartSmart .....6  
Fig. 2: **Nero InfoTool** window; **Drive** tab .....7

## 6 Index

### B

Browser .....8

### C

Codec

  audio.....8

  video.....8

Contact .....14

Conventions.....4

### D

DirectX

  version.....8

Driver

  software.....8

Drivers

  hardware .....8

### L

Language

  change.....11

Launching the program.....6

Log

  print.....10

  refresh.....11

  save .....10

### P

Peripheral .....8

Preview .....10

### R

Read features .....8

### S

Settings options .....7

Starting Nero PhotoSnap via Nero StartSmart.....6

System requirements .....5

### T

Target group .....4

### V

Version number .....8

### W

Write features .....8

## 7 Contact

Nero InfoTool is a Nero AG product.



Nero AG  
Im Stoeckmaedle 13-15  
76307 Karlsbad  
Germany

**Web:** [www.nero.com](http://www.nero.com)  
**Help:** <http://support.nero.com>  
**Fax:** [+49 724 892 8499](tel:+497248928499)

Copyright © 2007 Nero AG and its licensors. All rights reserved.