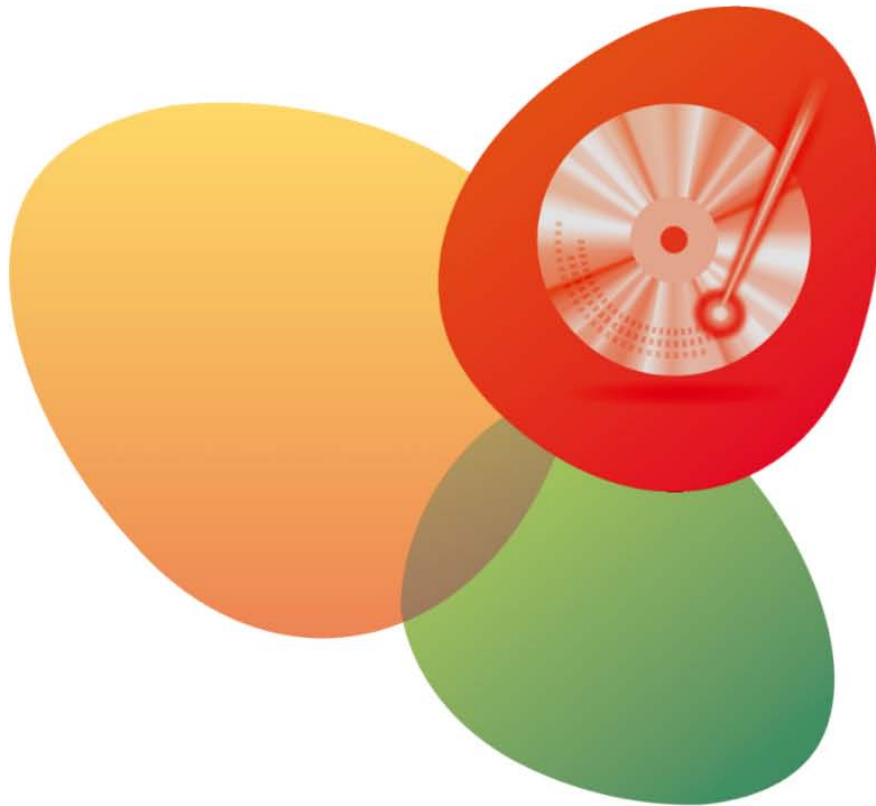


# nero

## Burning ROM



## Tutorial

### Adding Newsfeed to Nero StartSmart


The tutorial and all its contents are protected by copyright and are the property of Nero AG. All rights reserved. This tutorial contains material that is protected by internationally valid copyright. No part of this tutorial may be reproduced, transmitted or transcribed without the express written permission of Nero AG. Nero AG rejects any claims that transcend the clauses of the guarantee rights. Nero AG does not undertake any liability for the correctness of the content of the tutorial. The contents of the tutorial may be changed without prior notice. All trade names and trademarks are the property of the respective owners. The trademarks mentioned here are named for information purposes only.

Nero AG, Im Stoeckmaedle 13-15, 76307 Karlsbad, Germany Nero Inc. 330 N Brand Blvd Suite 800, Glendale, CA 91203-2335, USA. -


Nero Rover Center-kita 8F-B, 1-2-2 Nakagawa-chuou Tsuzuki-ku, Yokohama, Kanagawa, Japan 224-0003 - [www.nero.com](http://www.nero.com) - <http://support.nero.com> - Copyright © 2006-2010 Nero AG and its licensors. All rights reserved.

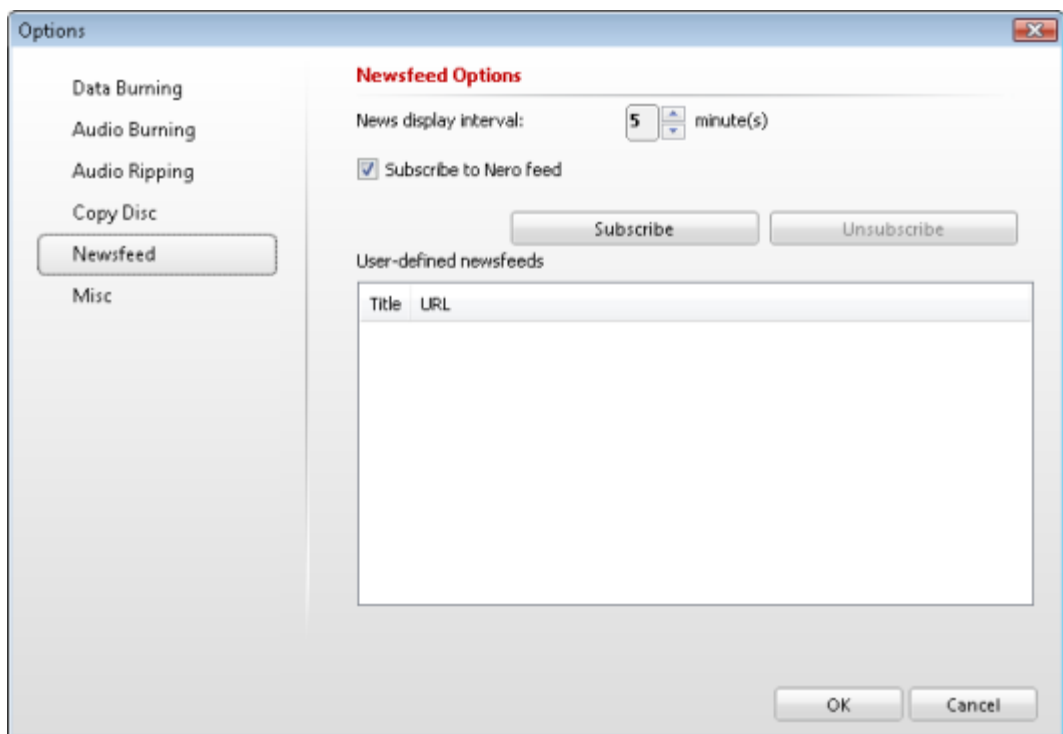
## Adding Newsfeed to Nero StartSmart

Nero StartSmart can act as a newsfeed reader that displays the newsfeed to which you have subscribed in the **News** area. Only text feeds are supported. The Nero feed is displayed by default.

A so-called feed consists of a file that only includes the structured content as it might appear on a page but without layout, navigation, or other additional information. Its address can be purchased in the Internet. It is often indicated by the  icon. An example for a newsfeed is the Nero press release feed <http://rss.nero.com/nero-news-enu.xml> or the MyNero feed "Best Blogger Ever" <http://rss.my.nero.com/best>.

To subscribe to newsfeeds, proceed as follows:

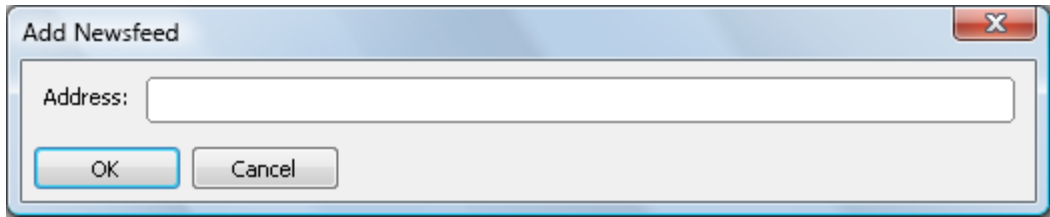
1. Click the  button.
2. Click the **Options** entry.
  - The **Options** window is opened.
3. Click the **Newsfeed** button.
  - The **Newsfeed Options** screen is displayed.



Newsfeed Options window

4. Use the arrow keys to select the desired update interval. It is specified in minutes.
5. Select the corresponding check box if you want to subscribe to the Nero feed.
6. Click the **Subscribe** button to create a new newsfeed.

- The **Add newsfeed** window is displayed.



**Add Newsfeed** window

7. Enter the address of the desired newsfeed in the **Address** text box and click the **OK** button.
  - You have subscribed to the new newsfeed. The newsfeed is displayed in the **User-defined newsfeeds** list.
  - You have set up a newsfeed. The news items of the newsfeed you have subscribed to will be displayed in the **News** area in the Nero StartSmart screen.