

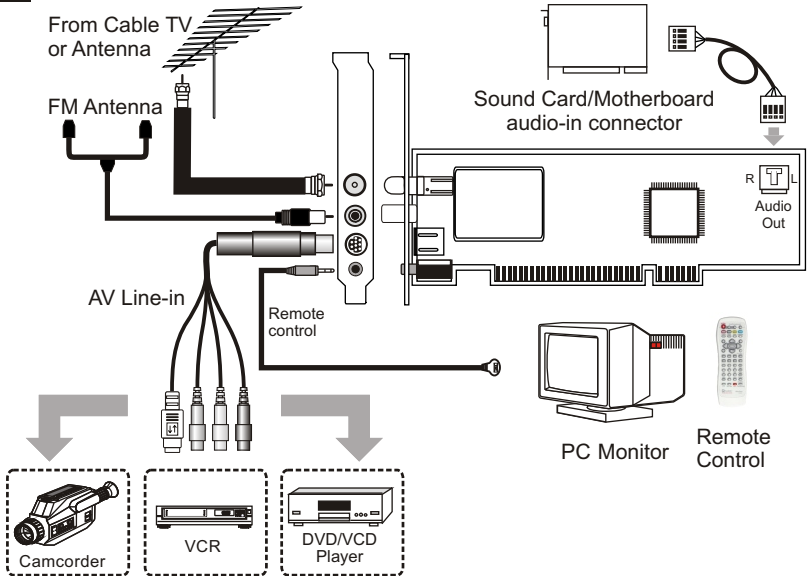
# *WinFast*

## TV Global Series Quick Installation Guide

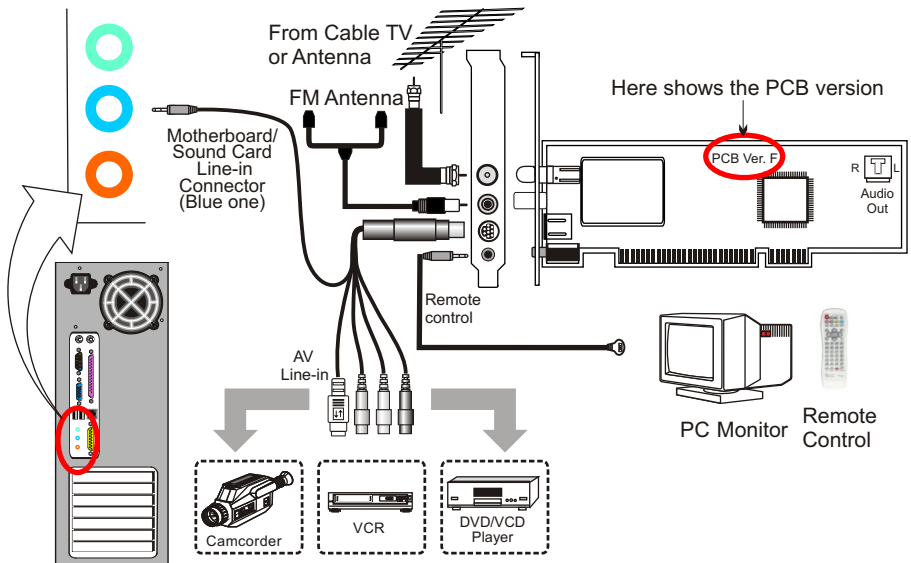


# Connect Input & Output Devices

## Type A



## Type B (Only for PCB Version F or later)



- Note:**
1. The diagram is for reference only. The actual board appearance may differ from the diagrams.
  2. FM function is applicable to specific products, please refer to the description on the retail box for the detailed product specifications.

# Driver & Application Installation

## Step 1:

Turn on your PC and start up the Windows.

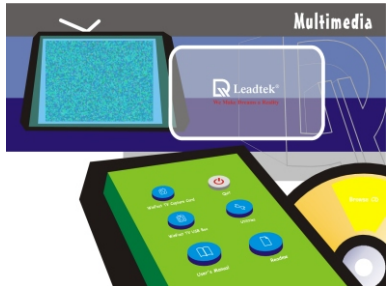
## Step 2:

Shortly after entering the Windows, you will see the **Found New Hardware Wizard** dialog box. Click **"Cancel"**.



## Step 3:

Insert the Multimedia Software CD into your CD-ROM drive. Autorun will start and the menu screen will appear as the figure shown to the right. Click the button marked **“WinFast TV Capture Card”** on the virtual remote control.



## Step 4:

Choose the language for the installation. Click **“OK”**.



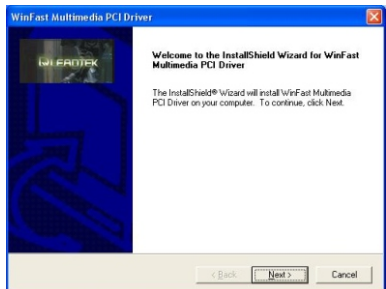
## Step 5:

The wizard is preparing for the installation. There is a progress bar indicating the status.



## Step 6:

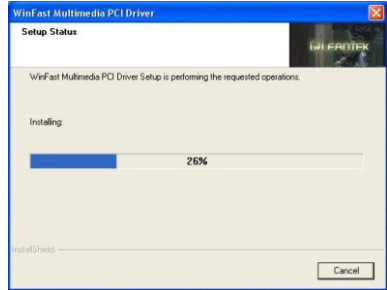
The driver installation is going to start. Click **“Next”**.



# Driver & Application Installation

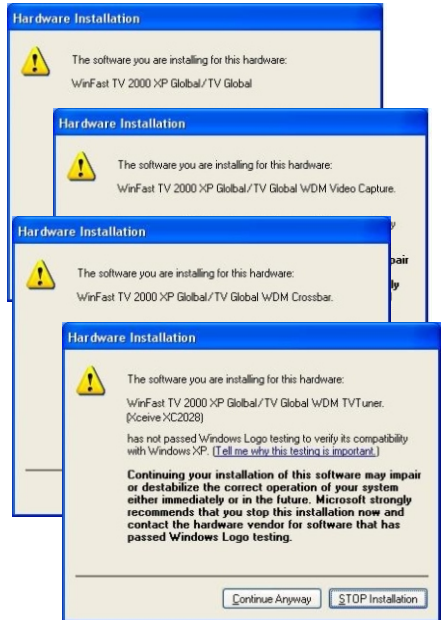
## Step 7:

The wizard is installing the driver. There is a progress bar indicating the status. Please wait.



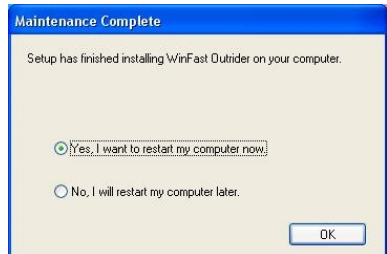
## Step 8:

If warning messages show up, please click “Continue Anyway”.



## Step 9:

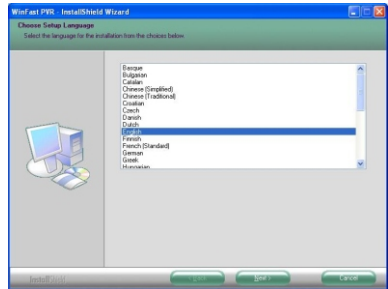
The installation is finished. Please choose “Yes, I want to restart my computer now” to reboot your computer, and click “OK”.



# Driver & Application Installation

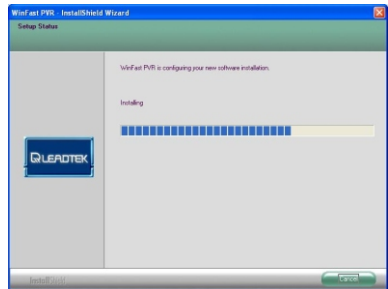
## Step 10:

After reboot, the wizard will automatically install WinFast application. Please choose the language for installation and click "OK".



## Step 11:

The installation is progressing. Please wait.

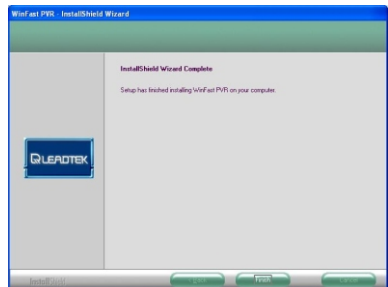


## Step 12:

Please click "Yes" in next few steps to continue.

## Step 13:

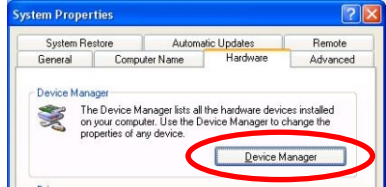
Please click "Finish" to finish the entire installation.



## After Installation Complete

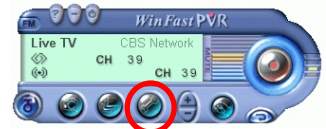
To make sure that you have successfully installed the hardware, please right-click on “**My Computer**” icon on the desktop. Choose “**Properties**”, and click “**Device Manager**” button under the “**Hardware**” label.

Device Manager Window will show up. Click on the “+” in front of “**Sound, video and game controllers**”, and check that if your WinFast hardware items are as the picture shows.

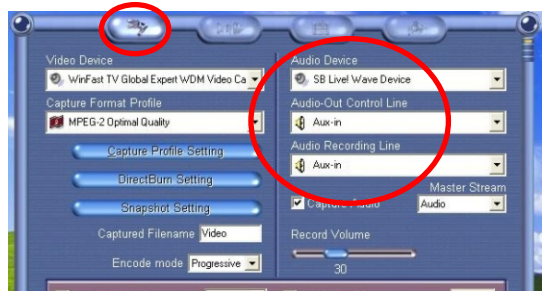


## Settings

Please launch WinFast PVR application, and click on the **Configuration** icon. After the setting window shows up, please click on the first label.



If you chose Type A (mentioned on page 1) as your way of connection, first select a correct sound device under “**Audio Device**”, which depends on whether you connect the audio cable to your sound card / motherboard’s internal AUX-in or CD-in connector. And then change your **Audio-Out** and **Audio Recording Control Line** to “**AUX-in or CD-in**” from the drop-down list.



If you chose Type B (mentioned on page 1) as your way of connection, first please select a correct sound device under “**Audio Device**”, which depending on whether you connect the audio cable to your sound card / motherboard’s external Line-in connector. And then change your **Audio-Out** and **Audio Recording Control Line** to “**Line in**” from the drop-down list.

