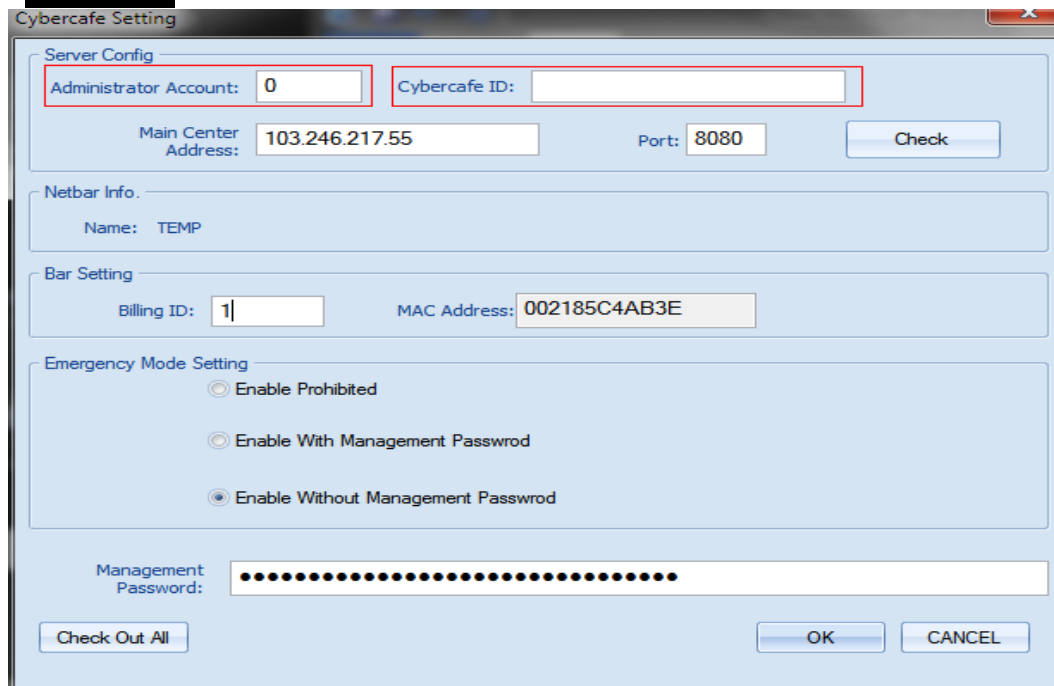


# How to install Billing Cashier and Client.

1. Download the installer from e2Links website:

<http://www.e2links.com.my>

2. First install the Billing at Cashier. Just simply click "Next" until "Finish",  
After install completed click the icon below to open your cashier.

A screenshot of the "Cybercafe Setting" application window. The window has a light blue background and contains several sections:

- Server Config:** Includes fields for "Administrator Account" (value: 0), "Cybercafe ID" (empty), "Main Center Address" (value: 103.246.217.55), and "Port" (value: 8080). A "Check" button is located to the right of the port field.
- Netbar Info:** Includes a "Name" field with the value "TEMP".
- Bar Setting:** Includes a "Billing ID" field (value: 1) and a "MAC Address" field (value: 002185C4AB3E).
- Emergency Mode Setting:** Contains three radio button options: "Enable Prohibited", "Enable With Management Passwrod", and "Enable Without Management Passwrod". The "Enable Without Management Passwrod" option is selected.
- Management Password:** A password field with a masked input (dots).
- At the bottom, there are three buttons: "Check Out All", "OK", and "CANCEL".

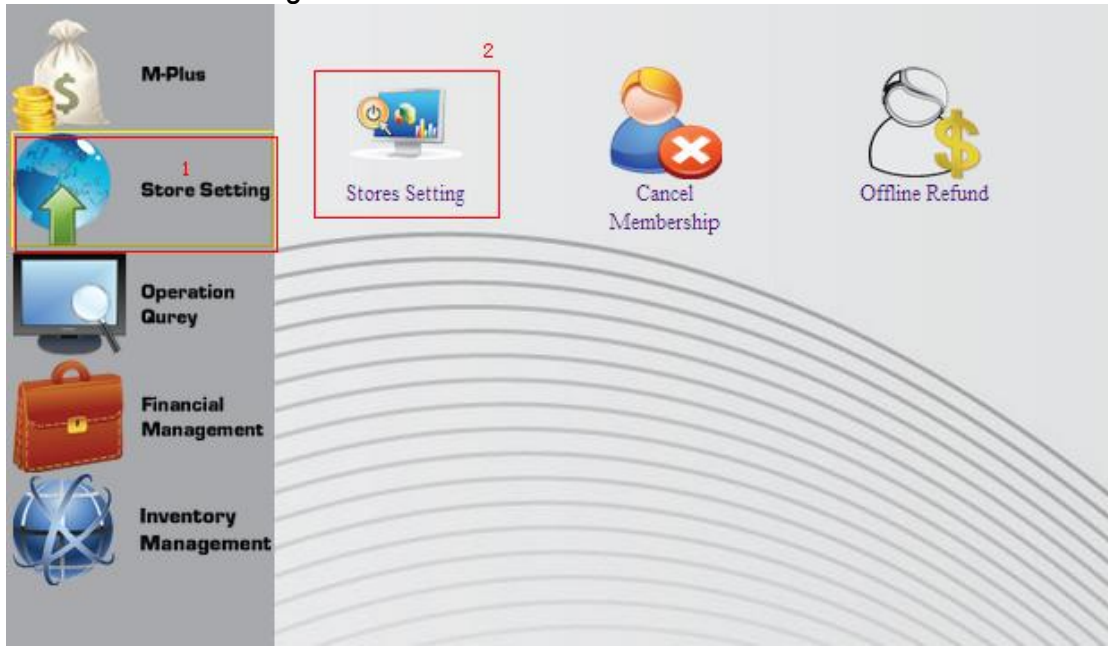
3. Now Login to e2Links Manage:

<http://manage.e2links.com.my>

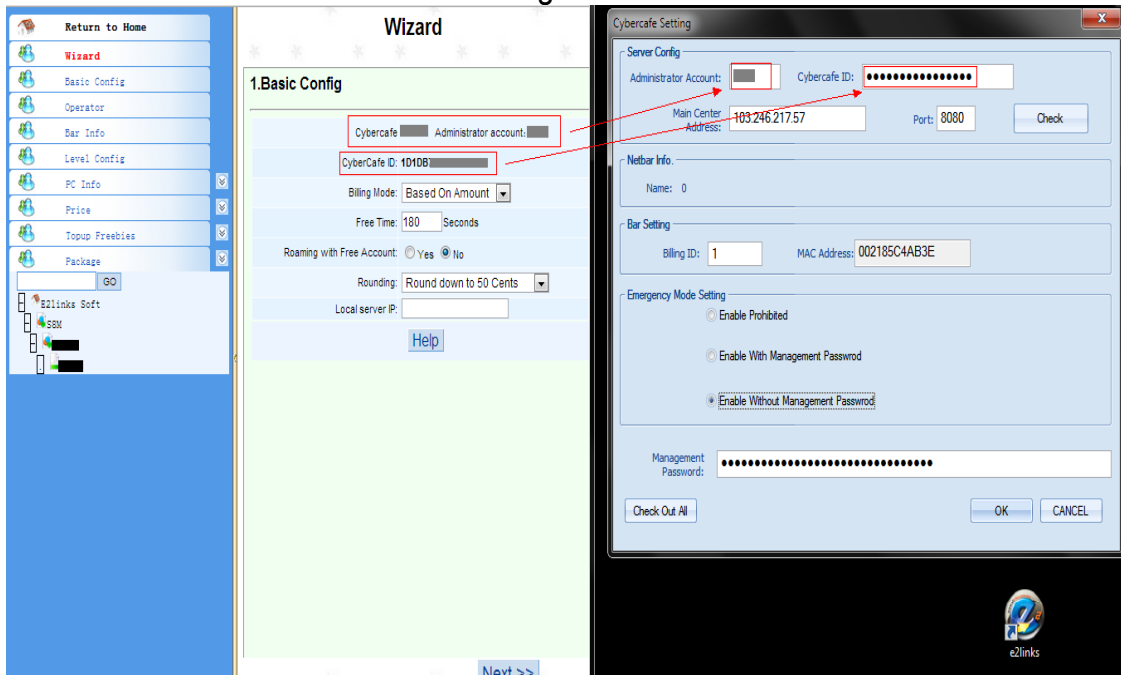
A screenshot of the "Login to e2Links Manage" web form. The form has a white background with a black border and contains the following elements:

- Header: "e2links manager LOGIN" and the e2links logo.
- Fields: "Username:" (empty), "Password:" (empty), and "Verify Code:" (value: 3554).
- Buttons: An orange "Login" button and a grey "Reset" button.

#### 4.Go to “Store Settings”



#### 5.Go to Wizard and fill the Server Config.



6. After filling the server config, you need to add cashier MAC address to "Bar Info"

The screenshot displays the e2links software interface. On the left, a sidebar menu includes options like 'Return to Home', 'Wizard', 'Basic Config', 'Operator', 'Bar Info', 'Level Config', 'PC Info', 'Price', 'Topup Freebies', and 'Package'. The 'Bar Info' option is highlighted with a red box. The main window shows the 'Cashier Counter Setting' section with a table and a form. The table has columns for 'Bar ID', 'Bar Name', and 'MAC'. Below the table, the 'Cashier Counter Setting' form is filled with 'Bar ID: 1', 'Bar Name: TEST', and 'MAC: 002185C4AB3E'. The 'Save' button is highlighted with a red box. To the right, the 'Cybercafe Setting' window is open, showing the 'Server Config' section with fields for 'Administrator Account', 'Cybercafe ID', 'Main Center Address' (103.246.217.57), and 'Port' (8080). The 'Bar Setting' section shows 'Billing ID: 1' and 'MAC Address: 002185C4AB3E'. The 'Emergency Mode Setting' section has 'Enable Without Management Password' selected. The 'Management Password' field is filled with dots. The 'OK' button is highlighted with a red box.

7. Click "OK" and Finish.

8. After that go to "PC Info", Add PC before install e2links Client.

The screenshot displays the e2links software interface. On the left, a sidebar menu includes options like 'Return to Home', 'Wizard', 'Basic Config', 'Operator', 'Bar Info', 'Level Config', 'PC Info', 'Area Config', 'Price', 'Topup Freebies', and 'Package'. The 'PC Info' option is highlighted with a red box. Below the 'PC Info' option, the 'Area Config' section is visible, with 'PC Info' highlighted with a red box. The 'GO' button is highlighted with a red box.

9.

TEMP PC Info (PC Information may change, please go check at Cashier Counter)

Area: All PC Name: IP: Search

Cybercafe	PC No	IP Address	PC Area	MAC Address	CPU	Radiator	Motherboard	Graphic Card	RAM	Harddisk	Monitor	Power Supply	Casing	Keyboard	Mouse	Webcam	Earphone
-----------	-------	------------	---------	-------------	-----	----------	-------------	--------------	-----	----------	---------	--------------	--------	----------	-------	--------	----------

51%

Add Delete **Batch Adding PC** Total 0 records This page 0 records Per Page 12 records The first 1 Page Go << Previous Next >>

TEMP Batch Adding PC

Area: A Number Of PCs: PC The First PC's Name: Example: A001, YX002 and etc Start IP:

CPU: Motherboard: Graphics:

Memory: Hard Disk: Power:

Chassis: Monitor: Keyboard:

Mouse: Camera: Headphone:

Save

10. After added all the PC, you need Login to cashier and synchronize all the PC list to Cashier.

Note: Use administrator account to login.

Sign In

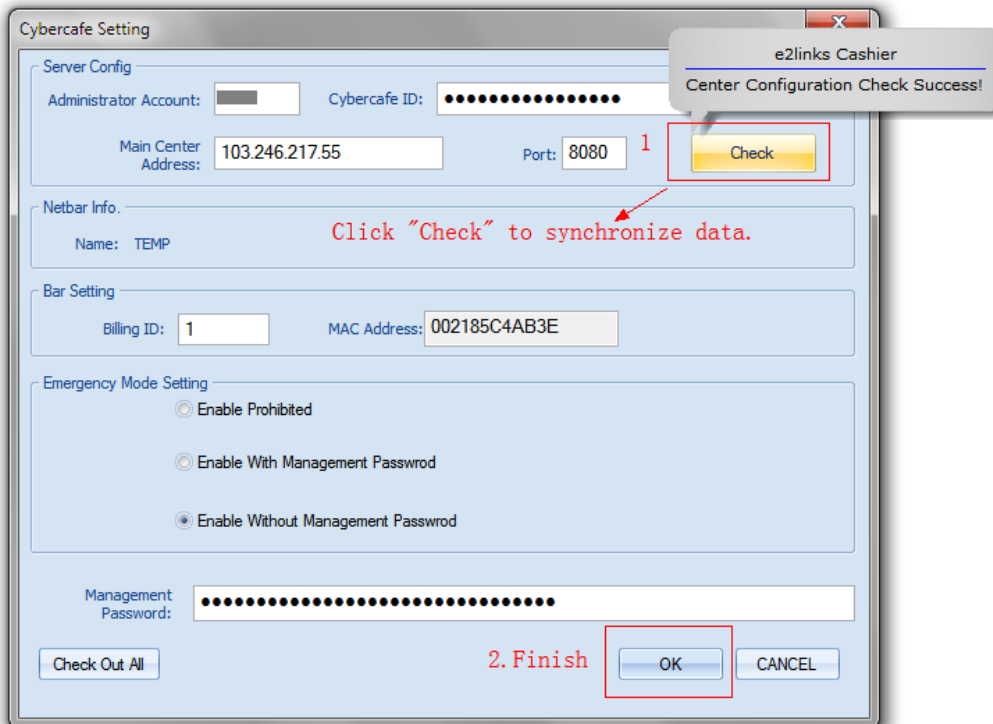
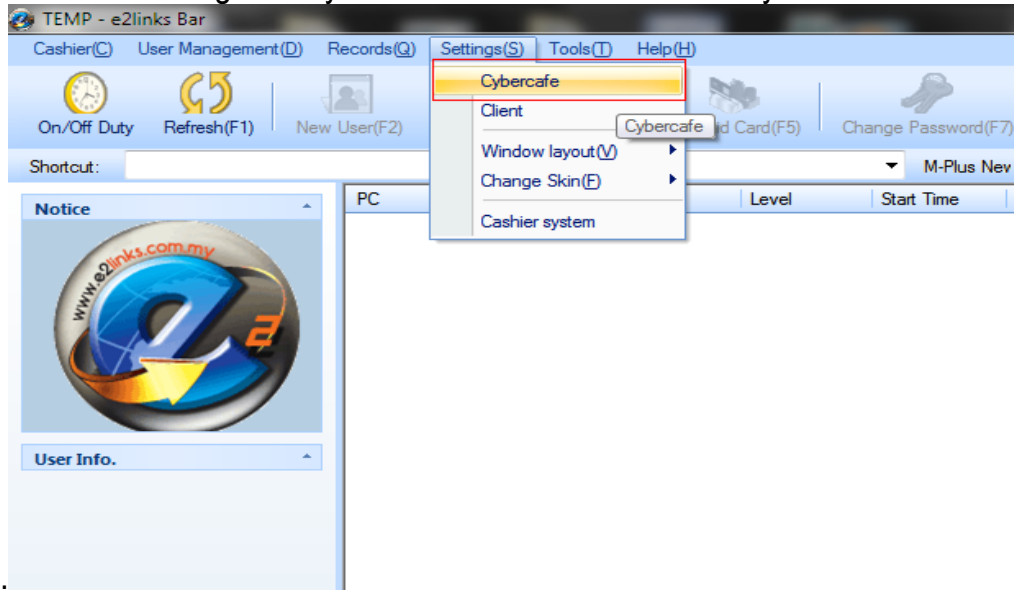
Netbar Management Platform

Operator Language

Password

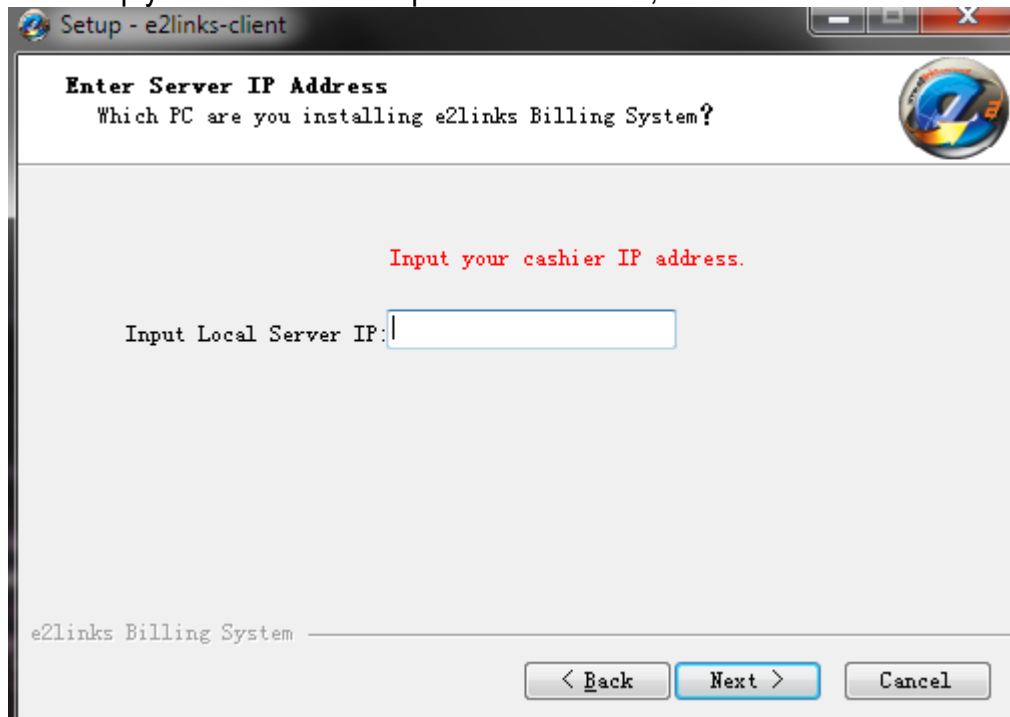
Options Sign In

11. Go to "Settings" > "Cybercafe" and click "Check" to synchronize.



12. After synchronization is successful, you can now install the e2Links Client.

Go to the client PC, open the installer that you downloaded from the e2Links website. Just simply click "Next" and input the cashier IP, and then click "Next" to install.



**(FINISH!)**

**<Cashier and Client Install Completed!!>**

**Here To Download or view e2links online PDF Guide:**

<http://goo.gl/g8Sa6z>