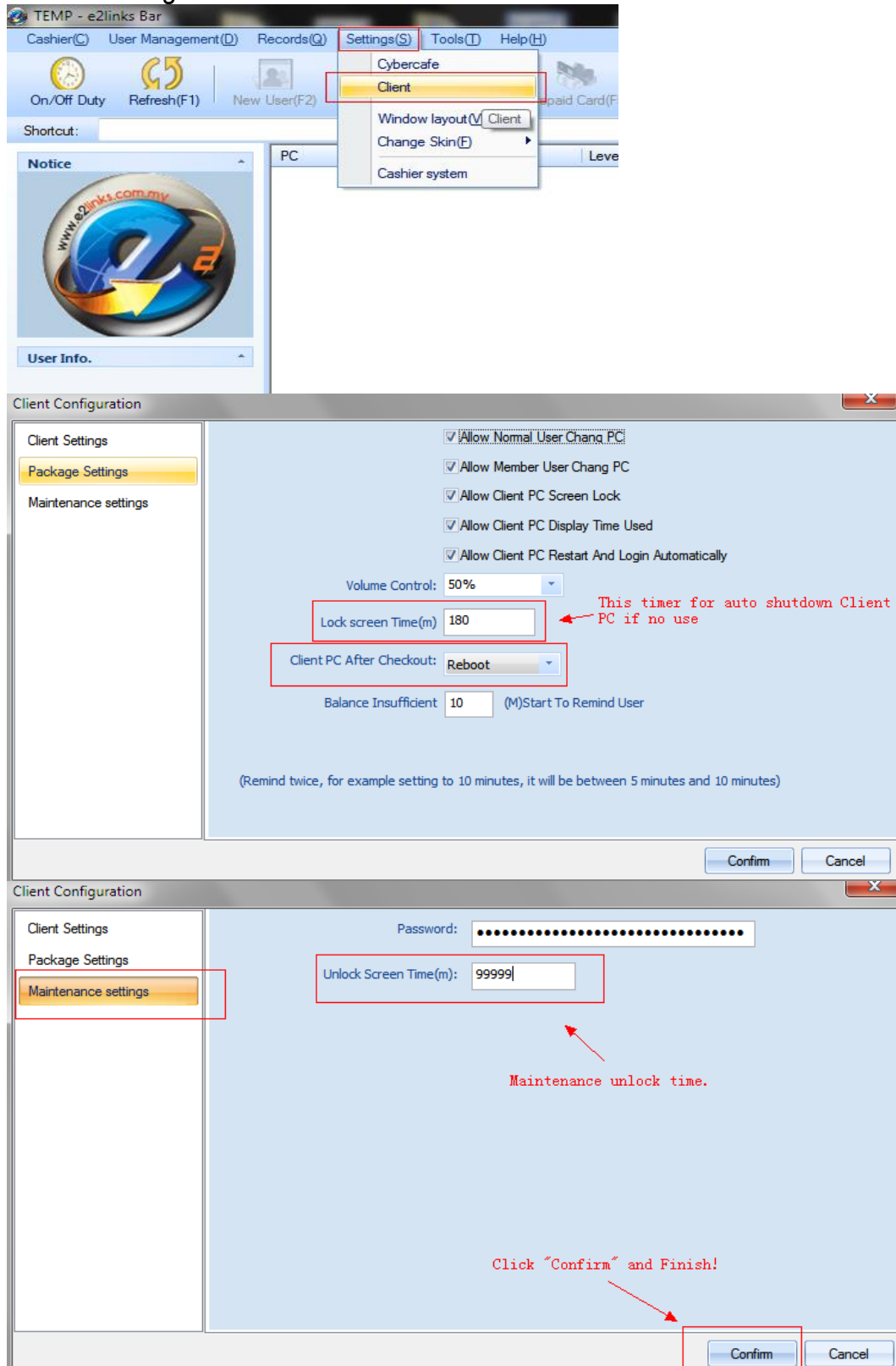


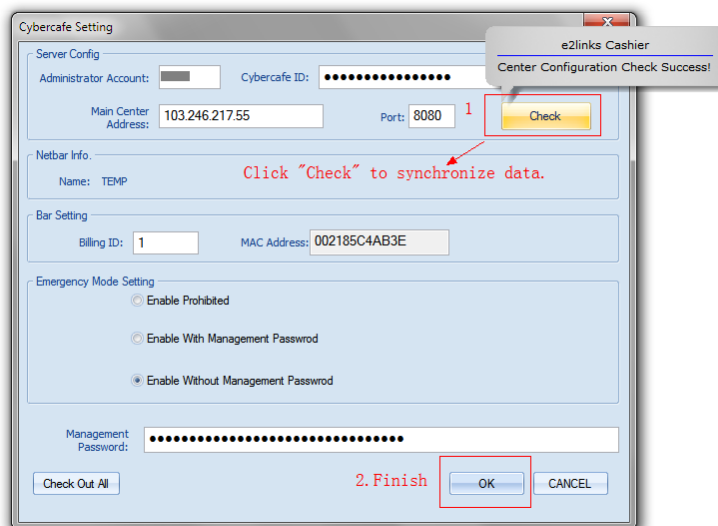
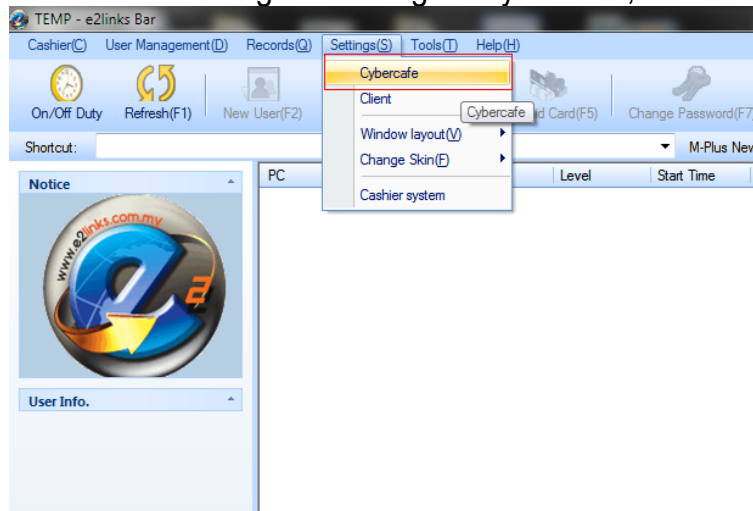
After installed cashier and client, what you need to do next?

Cashier Settings: (Recommended Settings) Reference only.

### 1. Client Configuration



After Done this all go to Settings > Cybercafe ,click “Check” to Synchronize.



Click “OK” and Finish.

**<Cashier Settings Completed!!>**

Here To Download or view e2links online PDF Guide:  
<http://goo.gl/g8Sa6z>