



Copyrights

Text, illustrations and examples have been produced with great care. The editor is neither legally nor in any other way liable for incorrect information given and its possible consequences.

This document is protected by copyright. All rights reserved. Without written approval no part of this document may be reproduced through photocopying, microfilming or any other procedure, nor may it be translated into a language used by machines, especially data-processing plants. Rights are likewise reserved for quotation in lectures, on radio and television.

Microsoft Windows XP, Windows Vista, Windows 7, Windows 2003, Windows 2008 and Windows 2008 R2 are registered trademarks of Microsoft Corporation, Redmond, USA. O&O and the O&O-logo are registered trademarks of the O&O Software GmbH, Berlin.

Rev. 10/29/2009 12:27 PM

©2000-2009 O&O Software GmbH • Am Borsigturm 48 • 13507 Berlin • Germany

<http://www.oo-software.com>

Contents

About O&O CleverCache 7	1
Overview of new and known functions.....	1
Differences between the different Editions.....	1
What does O&O CleverCache do?.....	2
Caching problems in Windows.....	3
Automatic Optimization in the Background.....	3
Example: The "Server Problem".....	3
Example: "Editing Large Files".....	4
Example: "Multitasking with Multiple Applications".....	4
System Requirements	5
Installation	6
Note on licensing.....	6
Enter license.....	6
Updates.....	7
Using the test version.....	7
Uninstall.....	7
Online registration	9
What are the advantages of online registration at O&O?.....	9
How does online registration work?.....	10
Getting Started	11
Running O&O CleverCache in the Background.....	12
O&O CleverCache Statistics.....	12
Start and stop the O&O CleverCache Agent.....	12
Cache monitor.....	13
System Monitor.....	14
Use of the processors.....	14
Use of the main memory.....	15
System Cache.....	16

Hard disk	17
Close O&O CleverCache	18
Manage profiles	20
Creating a New Profile	21
Delete Profiles	22
Renaming a Profile	22
Importing and Exporting Profiles	22
Customize settings	24
File Cache Settings	24
File Cache Assessment Interval	25
Light System Loads	26
Normal System Loads	26
Heavy System Loads	27
Mem-O-Free and Mem-O-Safe	27
Mem-O-Free	27
Mem-O-Safe	28
System tuning	30
Processor Time	30
Memory Use	31
File Access	32
Set up view	33
Status Monitor	33
TrayIcon (Notification area icon)	33
O&O CleverCache in Windows	35
Support and Contact	36
End user license agreement 2.1 (EULA)	37

About O&O CleverCache 7

Thank you for choosing O&O CleverCache! In doing so, you now have access to one of the best and most user-friendly cache optimizing software packages developed for Windows.

Caching is meant to accelerate a system's operating system. When files are read, they are transferred from the hard disk to the main memory. This is because accessing data stored in the main memory can be done a lot faster than accessing data stored on a hard disk. The operating system is responsible for transferring those files between the hard disk and the main memory, optimally balancing this process for peak performance. In doing so, the performance of your computer can be increased dramatically.

We hope that you're satisfied with our new O&O CleverCache and that it helps you, as it has helped millions of other users worldwide, to keep your system performance at a maximum level!

We hope you take joy in using this O&O product!

Best regards,

<http://www.oo-software.com>

More:

[Overview of new and known functions](#)

[Getting Started](#)

Overview of new and known functions

The new version offers users an abundance of new functions as well as improvements to existing methods and options besides the compatibility of Windows 7. Even if you are an inexperienced user, configuring O&O CleverCache to automatically optimize the file cache is a cinch. After configuration is completed, you can rest assured with the knowledge that your system will be performing more quickly and reliably than ever before. O&O CleverCache handles all the fine tuning of your system, so you don't have to!

- **NEW:** Revised interface with clear Ribbon Bar
- **NEW:** Statistical evaluation of the memory load
- **NEW:** Advanced Profile Management
- O&O AutoSense Profile (predefined profile for applications)
- Monitoring of the most important system components (CPU, Memory, etc.), system tuning, and advanced functionality by way of the task tray.
- File cache management for Windows
- Detailed memory use and cache statistics
- Mem-O-Free for more available main memory and Mem-O-Safe for more security whenever the system crashes.

Differences between the different Editions

O&O CleverCache 7 is available in two editions:

- O&O CleverCache 7 Professional Edition
- O&O CleverCache 7 Server Edition

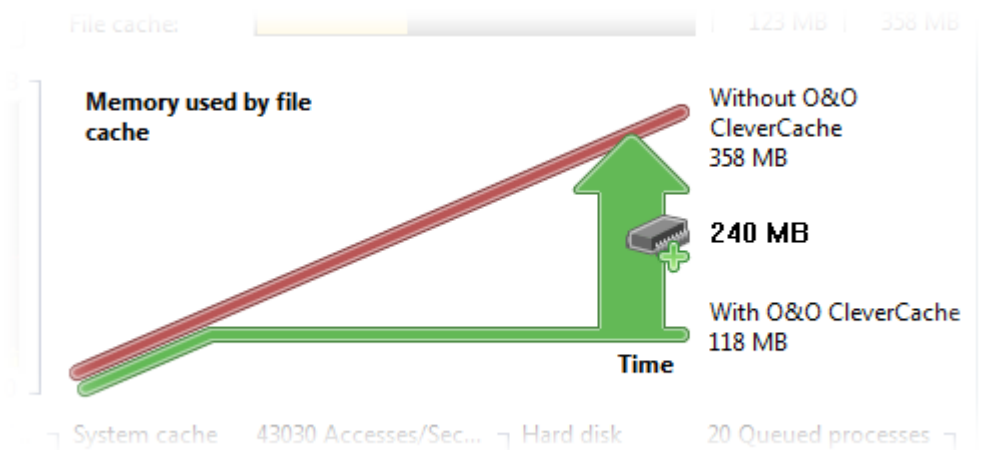
The **Professional Edition** allows you to optimize your file cache of one computer. It cannot be used on a server operating system.

The **Server Edition** can be used on a Server, as well as on a desktop computer.

What does O&O CleverCache do?

O&O CleverCache solves this problem by taking control of the resource management for file caching and applications. With O&O CleverCache, applications can allocate memory without forcing Windows to swap. This increases performance and lowers response times, especially when running many applications simultaneously. Our tests have shown that systems can run up to twice as fast with O&O CleverCache as without it. Server systems also show increased performance in processing high volumes of file (common in database applications).

With O&O CleverCache, you also have the ability to manually customize the file cache settings to meet your specific needs. Some specific applications could be gaming, server operations, or the editing of video material.



Increased Memory Performance with O&O CleverCache

The figure above illustrates the cache problem and how O&O CleverCache can help. Clearly marked are two progressions of used memory resources during the loading of a large file, one with O&O CleverCache in operation and one without. This graph is an accurate representation of how a system's memory resources behave when video editing software is in use. Here it is clear to see how a system running without O&O CleverCache will steadily lose available resources as time goes on. On the other hand, the rate at which the memory resources are consumed on those systems running O&O CleverCache plateaus after a specific value is reached. The remaining available resources can then be allocated for the operation of other applications, avoiding the swapping of files and sagging performance.

The optimal level for the file cache is determined by O&O CleverCache without any need for user input, adjusting itself to a system's specific hardware requirements automatically. In this way, O&O CleverCache

can quickly and easily rediscover the unrealized potential on any system, leading to increases in performance.

More:

[Automatic Optimization in the Background](#)

[Example: The "Server Problem"](#)

[Example: "Editing Large Files"](#)

[Example: "Multitasking with Multiple Applications"](#)

Caching problems in Windows

The Windows operating system executes its read and write operations with the help on an integrated cache management system. However, this system is not always helpful in increasing overall performance. Often some file operations reserve large segments of memory for the file cache, leaving less memory available for running applications. As a result, additional requests to save data to memory lead to the storing of less active data to the Windows page file (swapping). At the same time, it is also possible that programs experiencing errors require even more memory resources, decreasing the size of the file cache and potentially leading to system crashes. In a case such as this one, Windows has no defined minimum file cache size.

This behavior is paradoxical to the actual purpose of the file cache, leading to substantially reduced performance and instability.

Only up until recently it was not even possible for users to influence this behavior because Windows did not have any standard mechanisms for this purpose.

Automatic Optimization in the Background

O&O CleverCache is a Windows service that is automatically installed and configured generally without any need for manual manipulation of the software's settings. Whenever the system is booted, this service is automatically started. You will be able to see if O&O CleverCache has been correctly started by looking at the small TrayIcon (next to the system clock).

O&O CleverCache automatically selects the best settings for the optimal utilization of the memory resources.

If you would like to change the settings for O&O CleverCache, start the software from the program group entitled "O&O Software" in the Start menu or by way of the Control Panel. If O&O CleverCache is already running, simply right-click on the TrayIcon and select the heading "Control Center" in the context menu.

You will find more detailed descriptions of the settings in the chapter [settings](#).

Example: The "Server Problem"

Note: This chapter applies only to the Server Edition of O&O CleverCache.

If you keep a Windows-Server continuously running for some days, weeks or even months, you will eventually notice a slowing down of the reaction time. By restarting the server, you will find out that the system runs with significantly higher performance. The reason for this is the empty file cache resulting from the

reboot of the system. O&O CleverCache achieves the same result without any reboot, ensuring that maximum performance while the system is online.

In addition to other functions, O&O CleverCache also contains the "Mem-O-Safe" technology. This enables user control of the file cache's update interval. In Windows, the file cache is not only useful for reading files, but for writing them as well. For the sake of efficiency, the system waits a specific interval of time in order to save as many updates to files as possible at once. Normally, this interval cannot be changed by the user. O&O CleverCache, however, makes this possible. This technology can ensure that, even on the most important of file servers, only few to no files will be lost in the event of a system failure (program crash, hardware malfunction, power outage, etc.).

Example: "Editing Large Files"

System activities that require the constant accessing of files on the hard disk can be susceptible to performance losses due to inefficiency in the way the file cache operates. Particularly when using applications that require a large amount of memory, it is recommended that you try out O&O CleverCache on your system to accelerate your system. Desktop Publishing and graphical applications, CAD and video capturing applications are typical examples for such applications. You can also stop O&O CleverCache while running, to measure the performance – simply click on the register **System/Agent** in the ribbon bar on **Stop**. Compare the performance of your system before and after O&O CleverCache 7 has been activated.

Example: "Multitasking with Multiple Applications"

Multitasking is commonplace in Windows. Users will minimize an application window to the taskbar and leave it to run in the background while another application is in use. This is especially the case with users of Office applications who often switch between different Office applications at a high frequency. But even if the application is minimized it still continues to use main memory resources, possibly consuming file cache resources as well. By using O&O CleverCache the use of file cache is reduced significantly, and consequently, available main memory is increased. This results in much faster response times for the active applications.

System Requirements

Operating System

- System Requirements of each operating system needs to be fulfilled
- 100 MB free hard disk space
- Windows® XP till Windows® Server 2008 R2 (all editions)*
- Supported by 32-Bit/64-Bit

* Server operating systems will only be supported by the O&O CleverCache Server Edition.

Permissions

In order to install and run O&O CleverCache, it is necessary for you to be a member of the local administrator group or possess an equal level of privileges. If you are a domain administrator, you normally already possess such permissions.

Installation

Installing O&O CleverCache is very easy. Please follow the steps below:

- Turn on the computer on which you would like to install O&O CleverCache.
- Login as local administrator or as a user possessing comparable permissions.
- Start the O&O CleverCache installation file that you downloaded from our web server or that is found on your CD-ROM.
- After the setup program has been successfully initialized, please follow the installation dialogue.
- When prompted, restart your computer.

More:

[Note on licensing](#)

[Enter license](#)

Note on licensing

O&O CleverCache needs to be licensed per computer; in other words, you have to purchase a license for each computer where you want to employ O&O CleverCache. You are not allowed to transfer this license on another computer.

You can test O&O CleverCache for 30 days free of charge and with no obligation. The remaining trial period will be displayed each time you start the program.

If you would like to implement O&O CleverCache in your company or as a technician for your customers, then please contact our resellers or distributors.

Enter license

Note: In order to activate the O&O CleverCache after installation or to gain access to the Full Version at a later time, you must possess a valid license key. This license key is also called a registration code, serial number, or product ID. If you do not enter a valid license key, you can still use O&O CleverCache as a fully functional trial version for a limited time. Should you have any questions, please contact our Support Team.

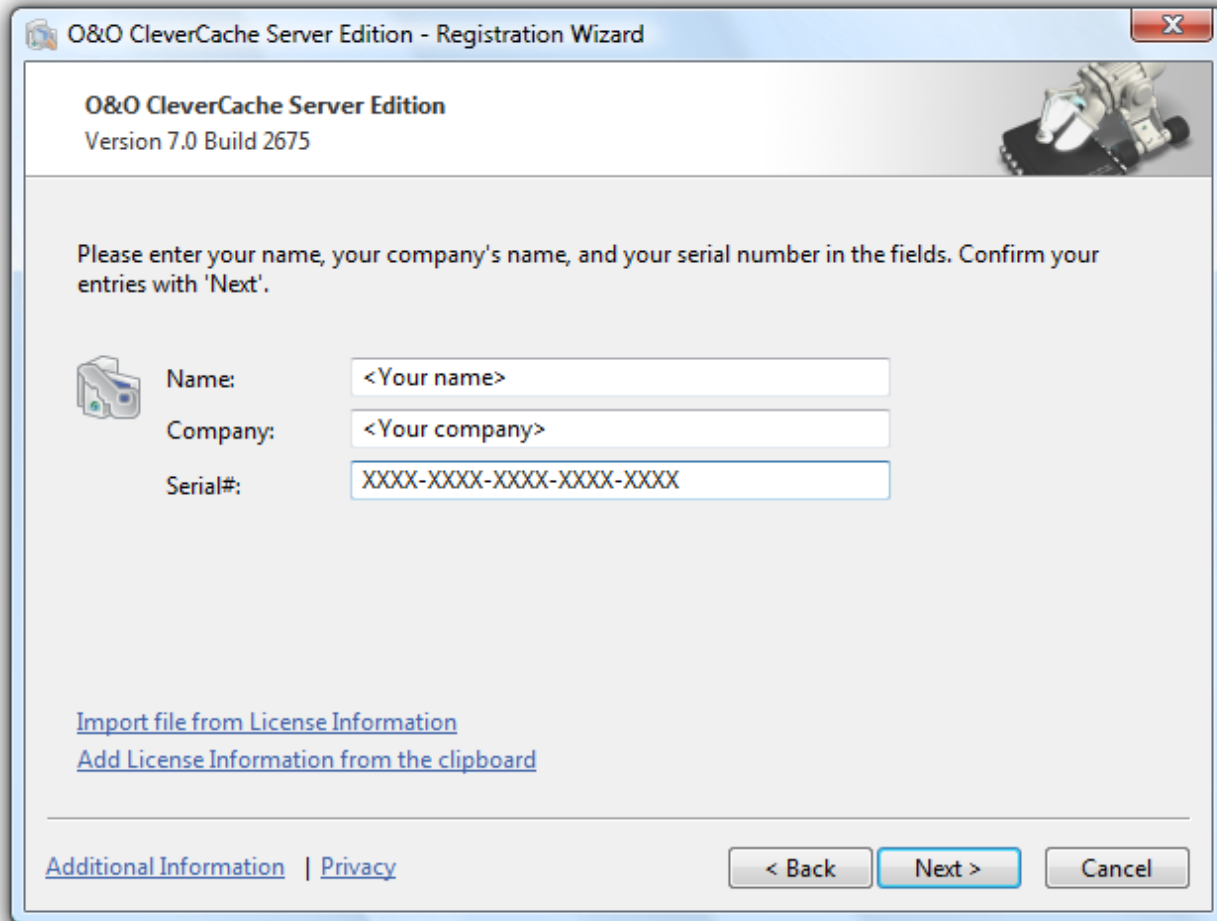
The dialogue for registration always appears automatically at the start to guide you if you are using an unregistered version or have entered the registration code incorrectly.

The registration wizard allows for a simple registration process. When you select the option **Enter your Registration Code**, a dialog box will appear where you can enter the registration code you received when purchasing the software. Please make sure that you do not confuse the digit "1" with "l" or enter any empty spaces where they don't belong.

Press **Next** to save the registration data or **Cancel** to leave the dialog window without saving the data.

When you have correctly entered the license code you will receive confirmation in the dialog window.

Should you run into any problems when entering your registration code, please contact our Support Team.



Registration Wizard: Enter the License Key

Updates

You can check whether new updates for O&O CleverCache are available in the Help Menu.

When updating from a previous version of O&O CleverCache, please follow the steps listed below:

1. Uninstall all the previous version of O&O CleverCache and keep your registration data handy.
2. Start the update installation for O&O CleverCache.
3. Simply follow the normal on-screen steps to install O&O CleverCache. Once finished, the new version is fully installed.

Using the test version

O&O CleverCache may be tested for 30 days free of charge and obligation. Each time you start the program, the registration wizard will appear informing you of the remaining trial period. Should you have any questions, please contact our Support Team.

Uninstall

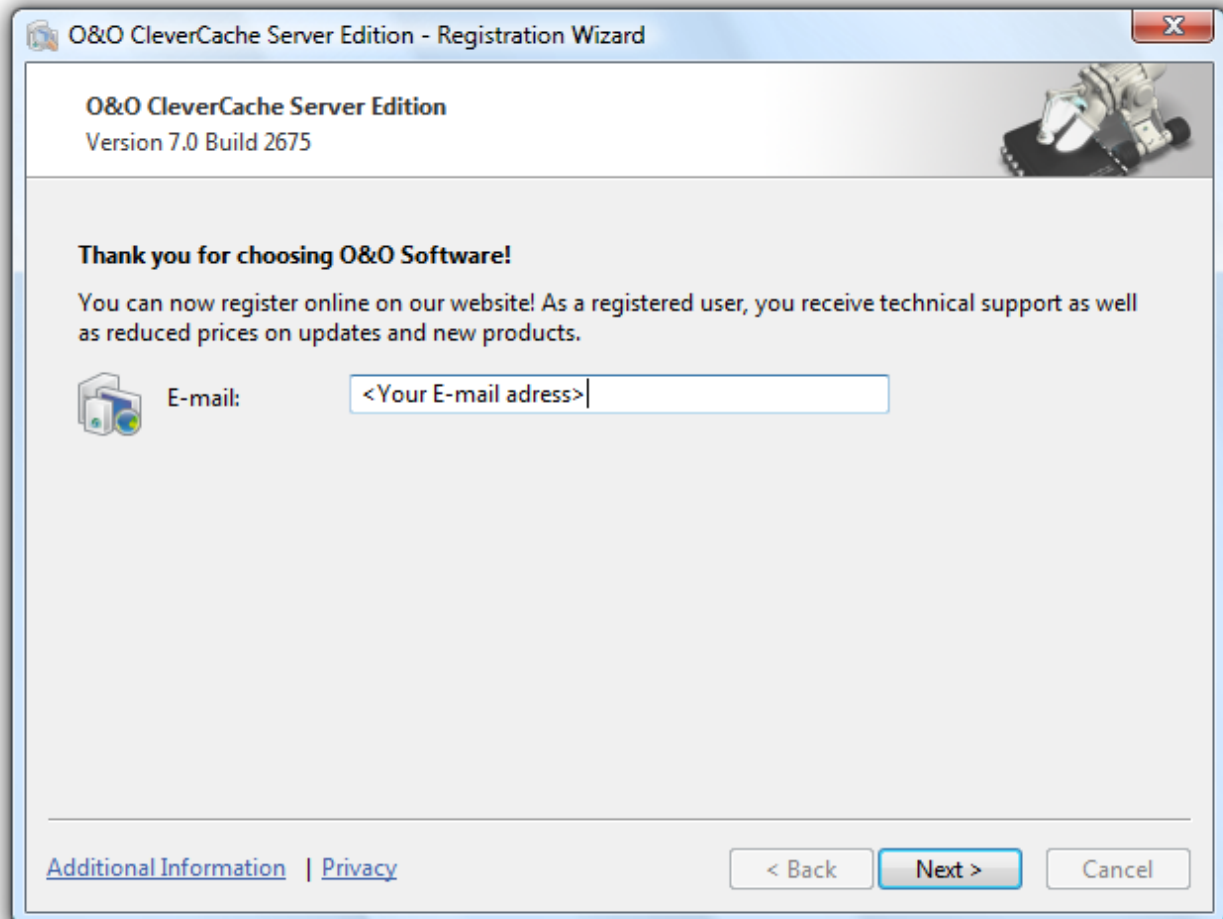
To uninstall O&O CleverCache, please follow these steps:

Installation

1. Open the Control Panel from the Start menu and select the software.
2. Click Add/Remove programs
3. Confirm the uninstallation of O&O CleverCache.
4. Once the uninstall process is complete you will receive a confirmation message.
5. To apply all settings, you have to restart the computer after a successful deinstallation when you are asked to do so.
6. Confirm then the uninstallation of O&O CleverCache. Once the uninstallation is complete, you may have to restart your computer.

Online registration

In order to register online, you will need the license key, which you have received when you purchased the program. This license key is also called a registration code, serial number, or product ID.



Online registration

More:

[What are the advantages of online registration at O&O?](#)

[How does online registration work?](#)

What are the advantages of online registration at O&O?

Online registration gives you the benefit of having your customer data kept safely on our files, which means we can provide you with even better service. This comes in very handy if, for example, you're unable to find the access code to your product. The access code is needed for making Updates or re-installing the O&O programs on your computer if it ever needs to be set-up again.

Further advantages will let you:

Online registration

- Be supplied with the latest information about our products
- Make free updates on new versions of purchased items (minor updates)
- Upgrade to a new version at a special discount price (major update)
- Obtain support from our Customer Service
- And much, much more...

How does online registration work?

If your O&O program was purchased on our Online Shop, you've automatically registered with us. If you've started the O&O program from CD, you will be asked to register online after the installation is complete. You then have the option of either registering immediately or at another time. All you'll need is a functioning Internet connection and a valid license key.

You may also complete the registration form right here:

<http://www.oo-software.com/register>

Just return the completed online form by clicking "Send" and take full advantage from our O&O Customer Service.

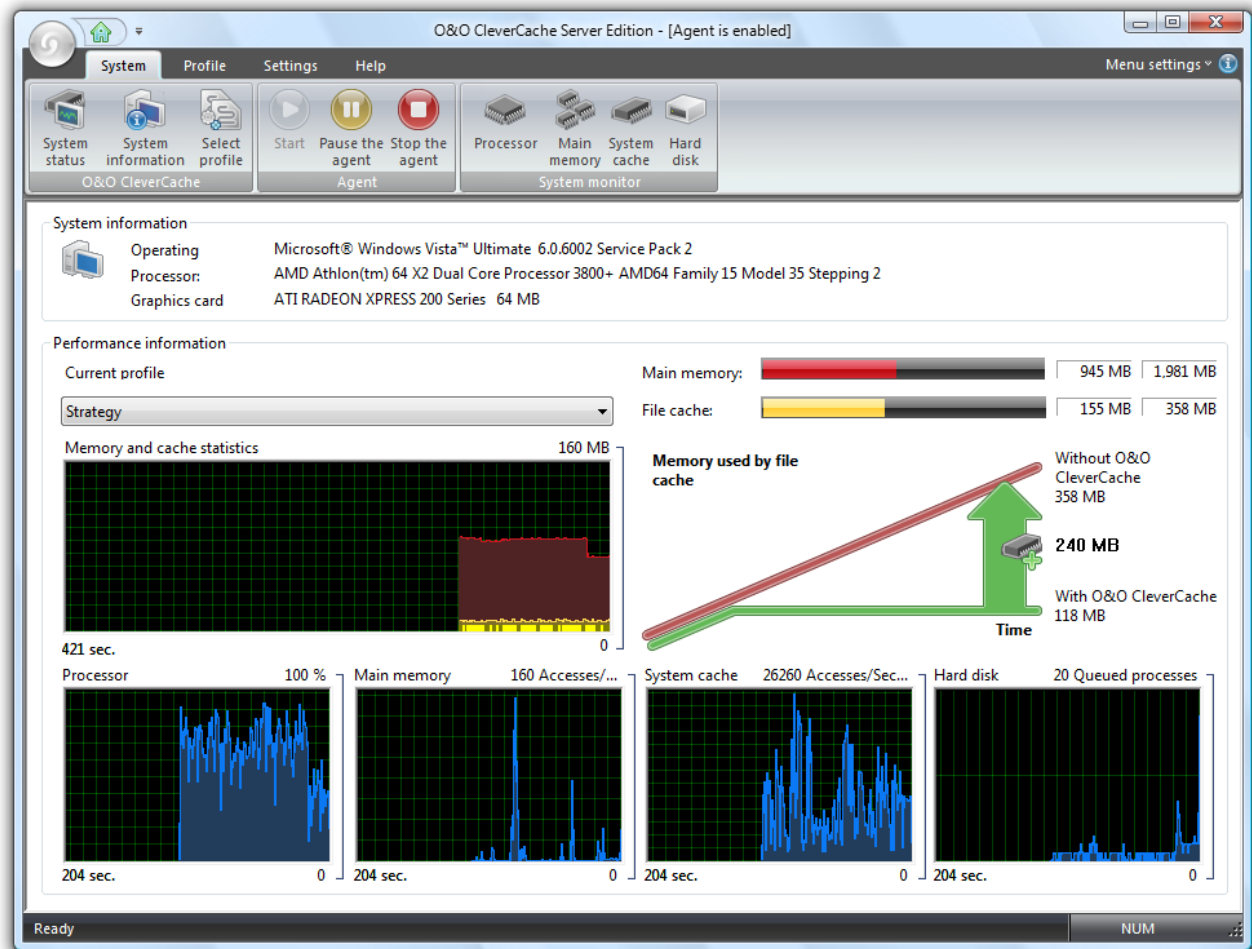
Getting Started

The following chapters will explain how you can use O&O CleverCache after it has been successfully installed.

If you change the default settings of O&O CleverCache, or if you want to look at the statistics, start O&O CleverCache under **Start/All programs/O&O Software/O&O CleverCache**. If CleverCache is already running, you can make a right-click on the [TrayIcon](#) and select **Control Center** in the context menu.

You can also have online help displayed by clicking Help or pushing F1. Please note that as a result of ongoing program updates, the information in the printed Manual may differ somewhat from that seen on online Help.

The user interface of O&O CleverCache is very easily and clearly structured. Individual functions are accessible over the Ribbon Bar.



O&O CleverCache start page (Control Center)

More:

[Run O&O CleverCache in the background](#)

[O&O CleverCache statistics](#)

[Customizing the Most Important Settings](#)

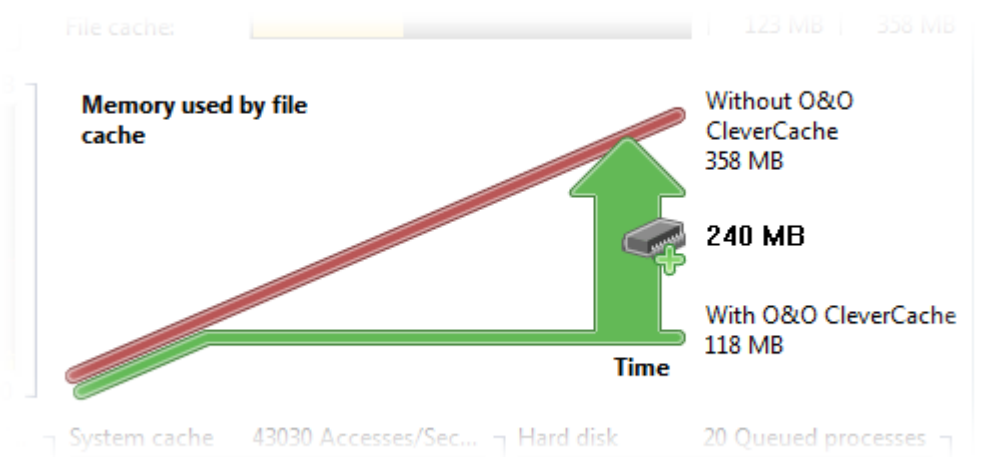
Running O&O CleverCache in the Background

After the installation has successfully been completed, the program window will automatically be opened, allowing you to check through the software's settings and take a look at your system's performance statistics. When you decide to close the window, you will be notified that the Agent will continue to run and optimize your system in the background.

O&O CleverCache analyzes the hardware configuration of your system and chooses the most optimal settings accordingly. It is not necessary for you to make any additional changes to O&O CleverCache, as the initial settings will immediately allow you to reap the maximum performance out of your system. To monitor the extent to which those new settings have increased performance, O&O CleverCache also offers you a multitude of individual performance statistics.

O&O CleverCache Statistics

O&O CleverCache offers you a real-time overview of the current load on your system's main memory, as well as how much is currently available. Through detailed statistical reporting, it is possible to graphically observe your main memory's progress over time. Moreover, these statistics can give you insight into exactly how much performance optimization O&O CleverCache can bring you.

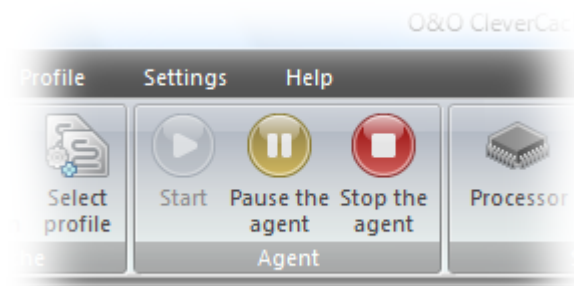


Memory Performance Comparison

In this chart it is clear to see how the file cache consumption of memory can be reduced with the help of O&O CleverCache. Important to notice here is amount of additional memory that is available on your system now that O&O CleverCache is activated.

Start and stop the O&O CleverCache Agent

The current status of O&O CleverCache will be displayed in the Ribbon Bar in tab **System / Agent**.



Enable and disable the O&O CleverCache Agent

Start - O&O-CleverCache-Agent is enabled and active. This software monitors and optimizes your file cache and other important performance settings.

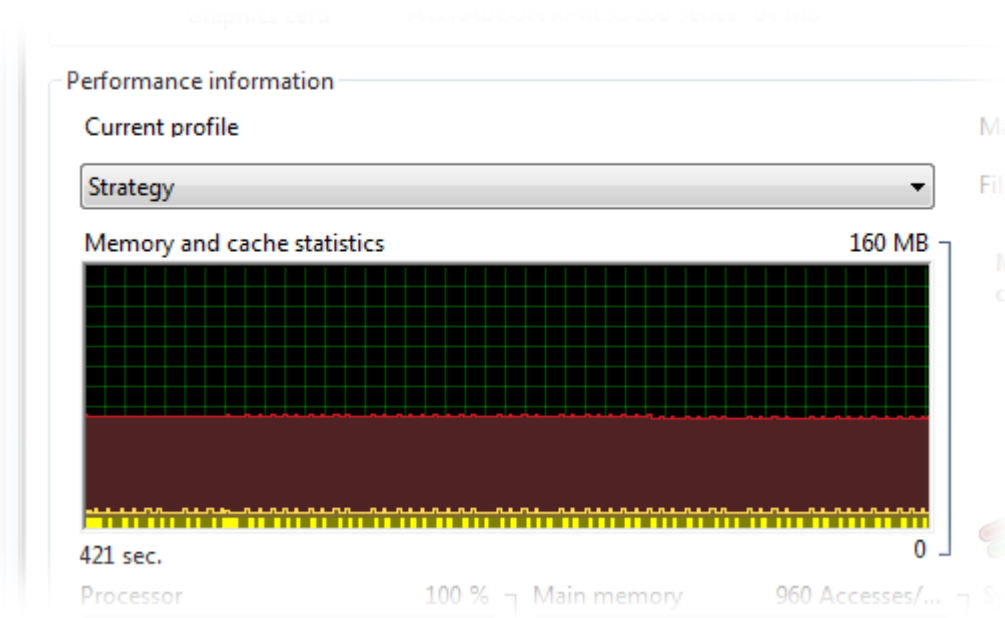
Paused - O&O CleverCache is paused - no optimization is run. Yet, it is still possible to monitor the behavior of your memory. To reactivate O&O CleverCache, click **Start**.

Stopp - O&O CleverCache-Agent is not enabled. To start it, run the command **Start**

Cache monitor

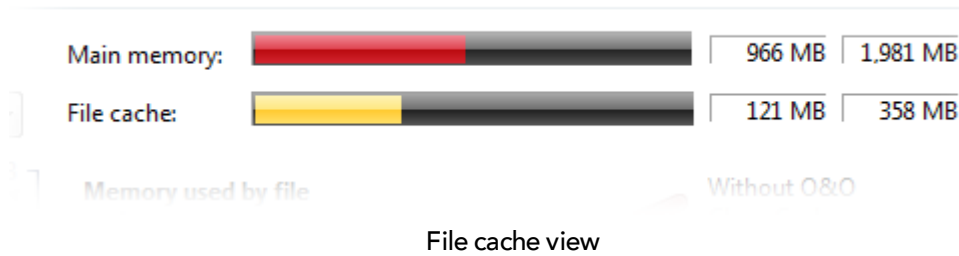
In the memory- and cache-statistic you can follow the distribution of the memory. O&O CleverCache shows the current memory use and its availability in megabytes and percentages.

The history is displayed as a chart in the lower area.



O&O Cache-Monitor

Also included in this section is the maximum allowed file cache size as well as its current usage.



Tip: When you use the [Status monitor](#), the same data are displayed in the smaller status monitor window accessed through the task tray icon.

System Monitor

With the System Monitor, you can monitor the performance of the most important components on your system. The system monitor is enabled by default.

Included in the System Monitor are current readings measurements from your processor, main memory, system cache and the hard disk.

Whenever the system monitor is active, you can select individual components in the Ribbon Bar in **System (processor, main memory, system cache, hard disk)** and display the statistics of the individual components. When the System Monitor is deactivated, the component icons cannot be selected.

If the system monitor should be deactivated, you can select it over the Ribbon Bar over **Settings/Enable system monitor**.

Note: For the System Monitor to successfully run, it may be that additional components need to be activated. This could require the use of additional memory resources.

More:

[Processor](#)

[Main Memory](#)

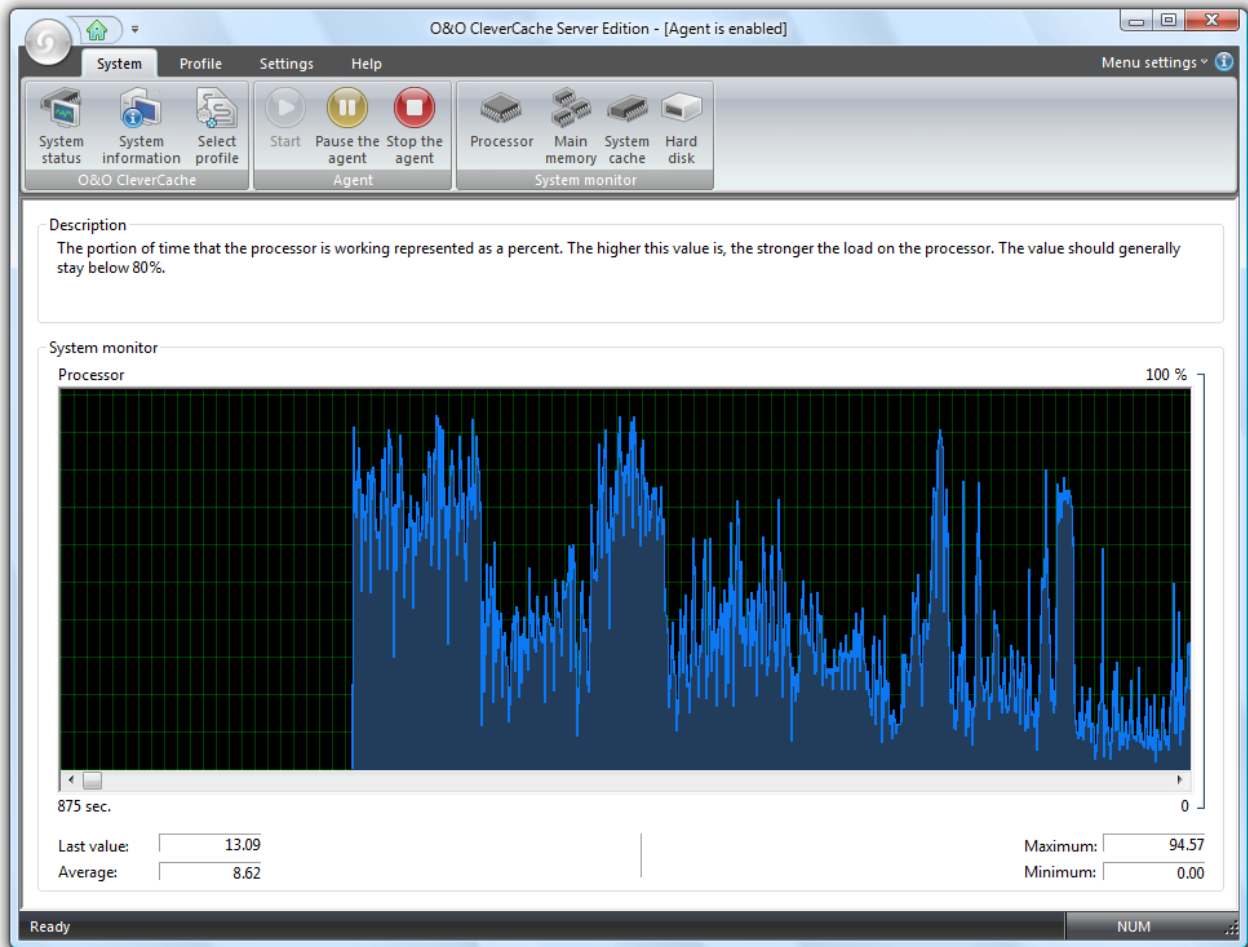
[System Cache](#)

[Hard disk](#)

Use of the processors

In this section, the load on the processor is measured and displayed over time as a graph. The units are explained in the legend. You can use a smaller view on the start page of O&O CleverCache (Control Center). You will find a more detailed view under hard disk in the Ribbon Bar. The units are explained in the legend. The statistical values for mean, maximum, and minimum can be found below the graph.

Getting Started

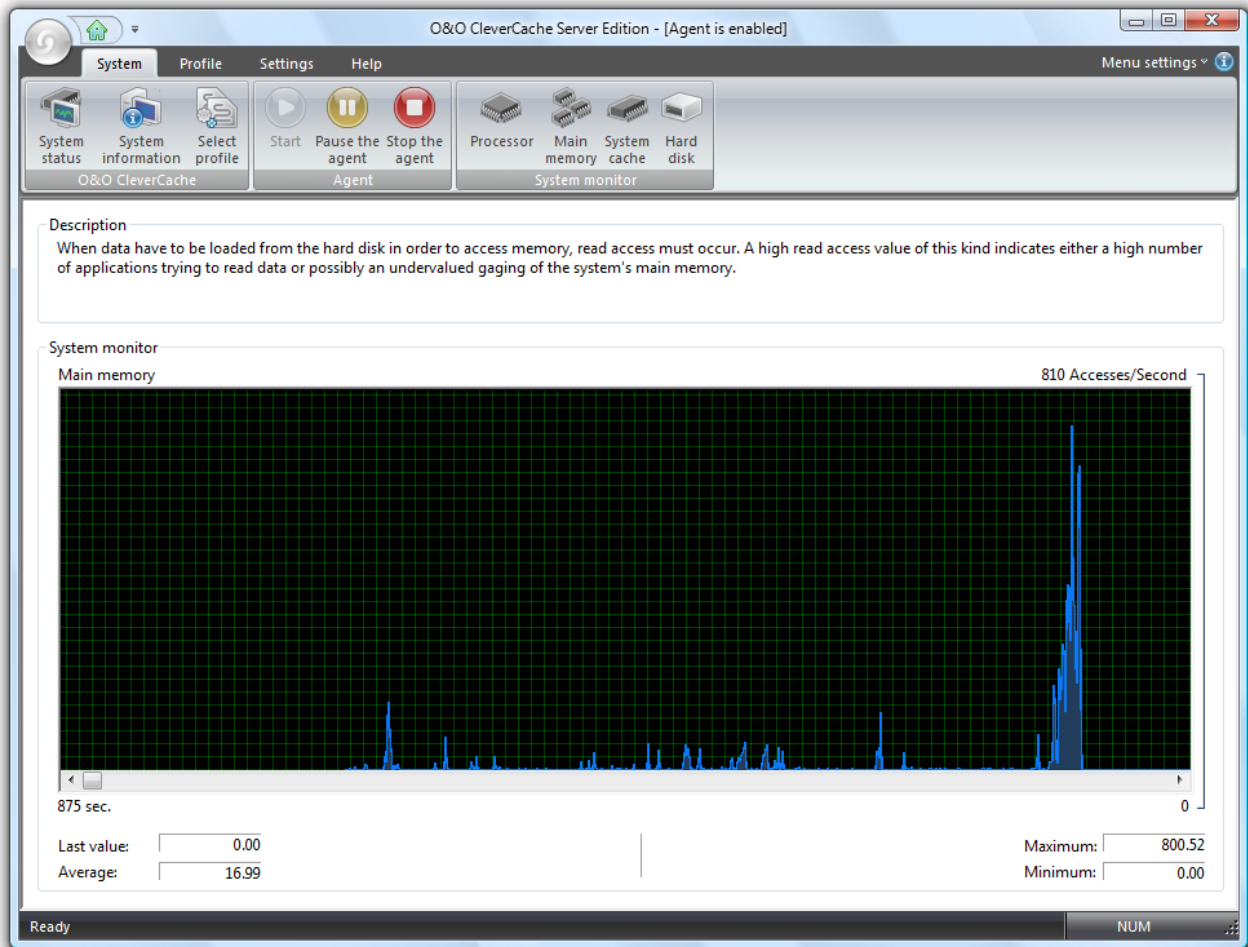


View of the use of the processor

Use of the main memory

In this section, the load on the main memory is measured and displayed over time as a graph. You can use a smaller view on the start page of O&O CleverCache (Control Center). You will find a more detailed view under **main memory** in the Ribbon Bar. The units are explained in more detail in the Ribbon Bar. The statistical values for mean, maximum, and minimum can be found below the graph.

Getting Started

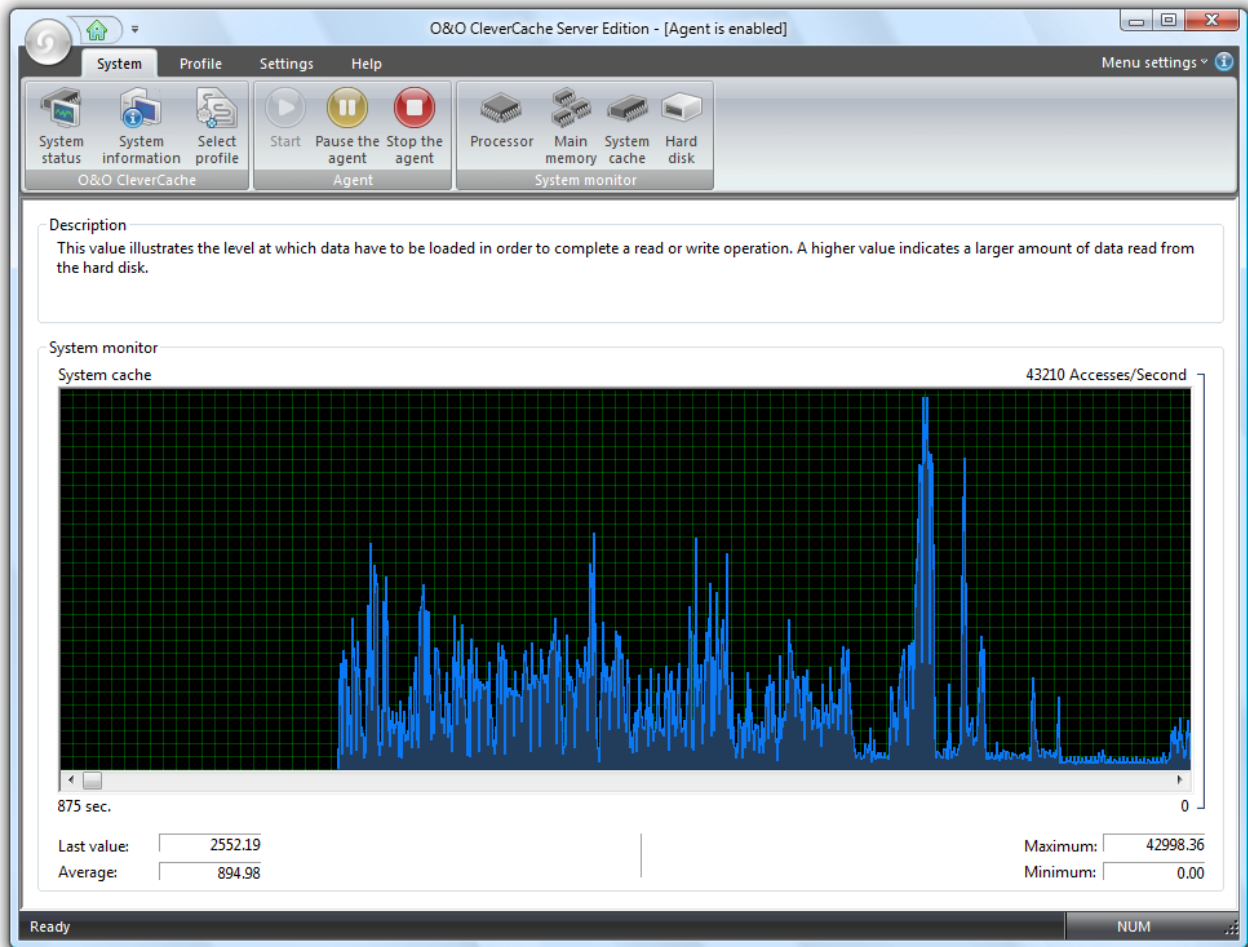


Use of the main memory

System Cache

In this section, the load on the file cache is measured and displayed over time as a graph. The units are explained in the legend. You can use a smaller view on the start page of O&O CleverCache (Control Center). You will find a more detailed view under hard disk in the Ribbon Bar. The units are explained in the legend. The statistical values for mean, maximum, and minimum can be found below the graph.

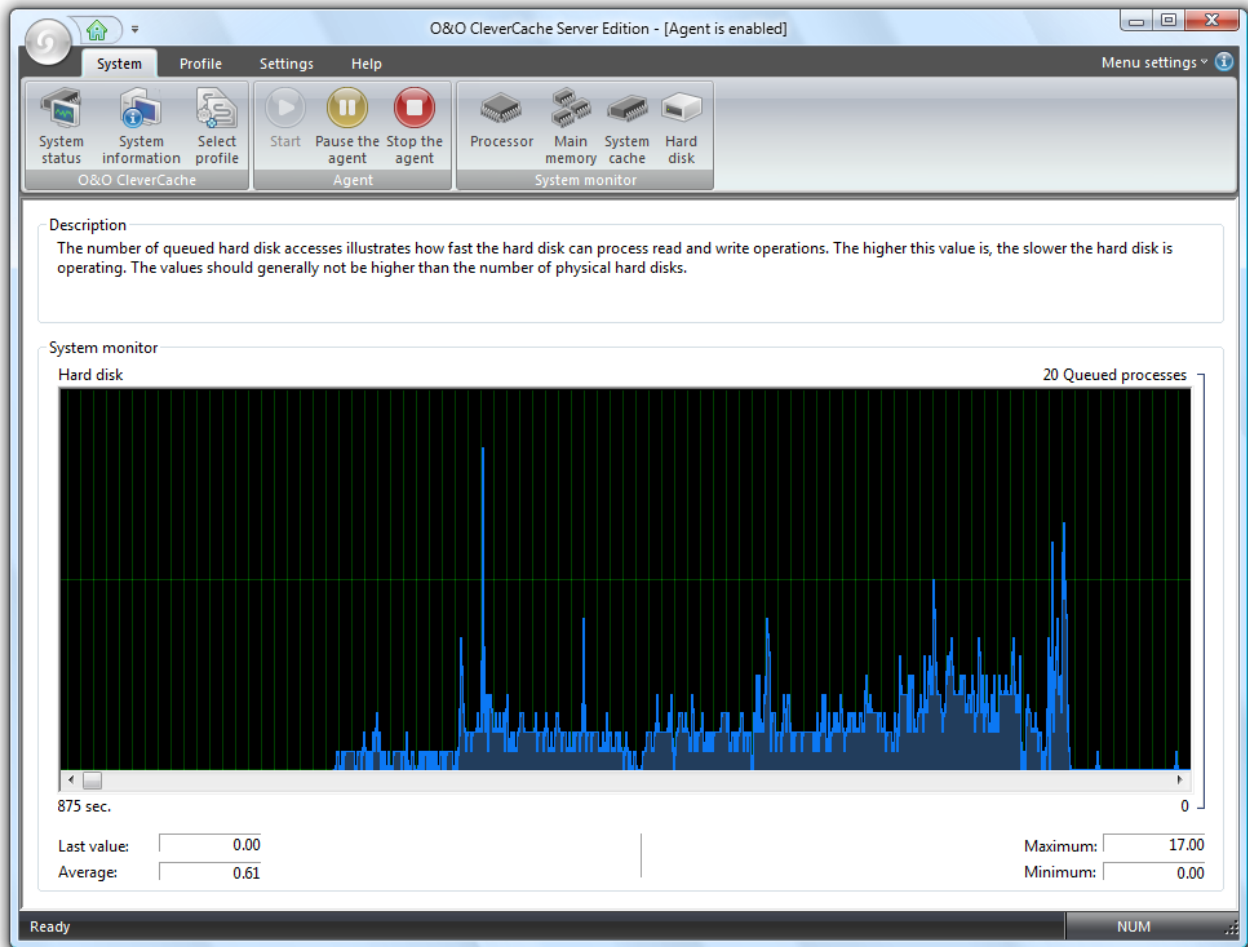
Getting Started



System cache view

Hard disk

In this section, the load on the hard disk is measured and displayed over time as a graph. The units are explained in the legend. You can use a smaller view on the start page of O&O CleverCache (Control Center). You will find a more detailed view under **hard disk** in the Ribbon Bar. The units are explained in the legend. The statistical values for mean, maximum, and minimum can be found below the graph. The statistical values for mean, maximum, and minimum can be found below the graph.



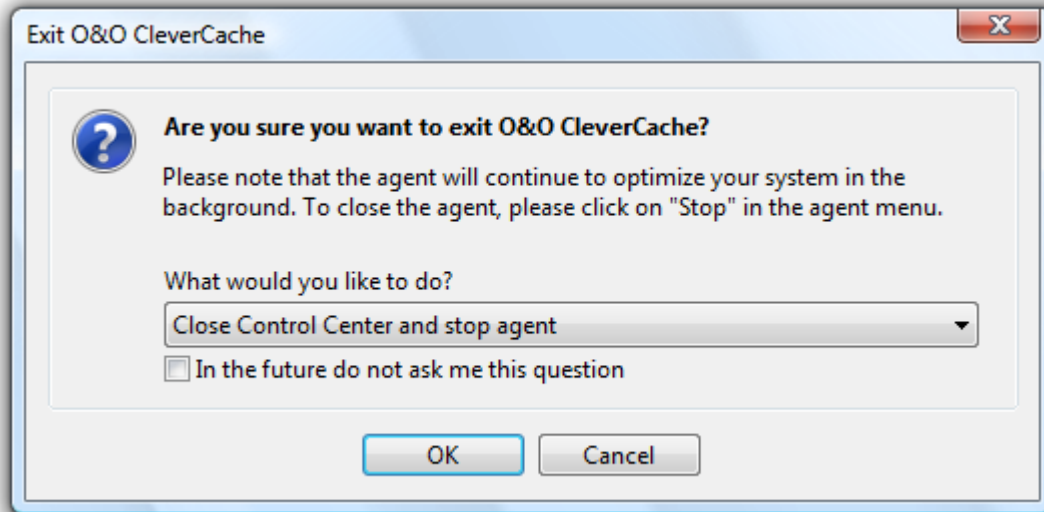
View of the usage of the hard disk

Close O&O CleverCache

When you try to close the O&O CleverCache Control Center, a window will appear giving you further options:

- **Minimize Control Center to the Task Tray:** The O&O CleverCache Agent will continue to run in the background and optimize your system. Although the O&O CleverCache Control Center will disappear from the screen, it can be reopened at any time. By right-clicking the [TrayIcon](#) you can still manage O&O CleverCache.
- **Exit Control Center:** The O&O CleverCache Agent will continue to run in the background and optimize your system. Although the O&O CleverCache Control Center will disappear from the screen, it can be restarted at any time.
- **Close Control Center and Stop Agent:** Your system will no longer be monitored and optimized.

If you do not want to answer this question again, simply select one of the three options, check the box labeled **In the future do not ask me this question**", and then click "OK". This procedure will instruct the software to choose this desired option every time you close the Control Center.

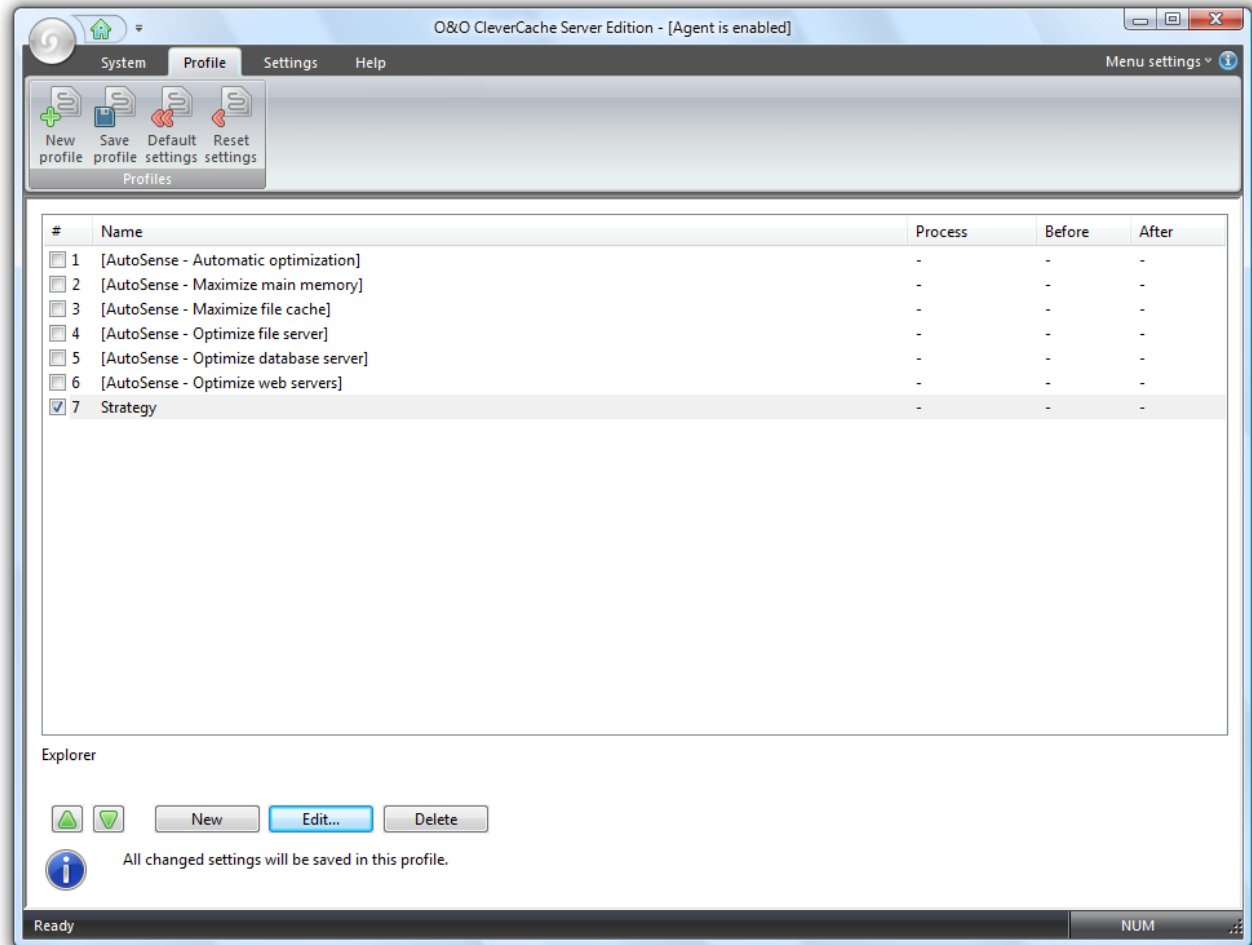


Close O&O CleverCache

Manage profiles

O&O CleverCache contains a number of predefined O&O AutoSense profiles meant to make working with the software even easier.

If a autoSense profile is selected, your system is analyzed at every start. If changes in the main memory noticed, then O&O CleverCache will automatically update the configuration settings so that the new hardware will be used to its full potential.



Manage profiles

Note: The O&O CleverCache Professional Edition offers three AutoSense profiles for selection, the Server Edition six.

More:

[Creating a New Profile](#)

[Delete Profiles](#)

[Renaming a Profile](#)

[Import and export profiles](#)

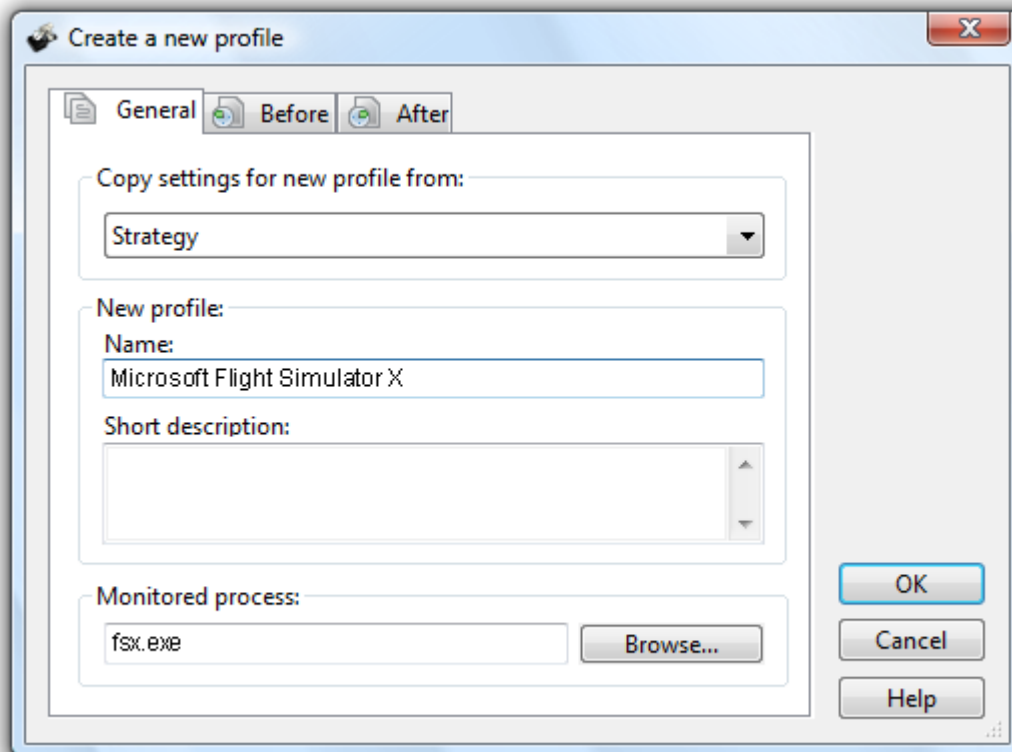
Creating a New Profile

Among other things, a new (user defined) profile allows you to change and save program settings, such as [Mem-O-Free](#) or [Mem-O-Safe](#). This is not possible with the Auto-Sense profiles.

To create a new profile, click on the button labeled **New** in the section labeled **Profile Management**. Each profile needs to have its own name. Optionally, you can also add a short description. You can enable the profile at any time or change and store setting.

Monitored Process

If you specify an application or a batch file as **monitored process** then the profile will be enabled automatically during their execution. You can also command O&O CleverCache to run an operation before and after a monitored process. For example turning you virus scanner on or off.



Create a New Profile

Delete Profiles

To delete a profile, click on "Profile Management" under the section heading "O&O CleverCache". Select a profile out of the list and then the button labeled "Delete".

Note: Predefined O&O AutoSense profiles may not be deleted.

Renaming a Profile

It is also possible to rename your own profiles.

1. Activate the checks for the desired options.
2. Click on **Edit** and change the name of the profile.

Should you try to import a profile whose name already exists, the same window will appear asking you to **rename** the profile you would like to import.

Note: Predefined O&O AutoSense profiles may not be renamed.

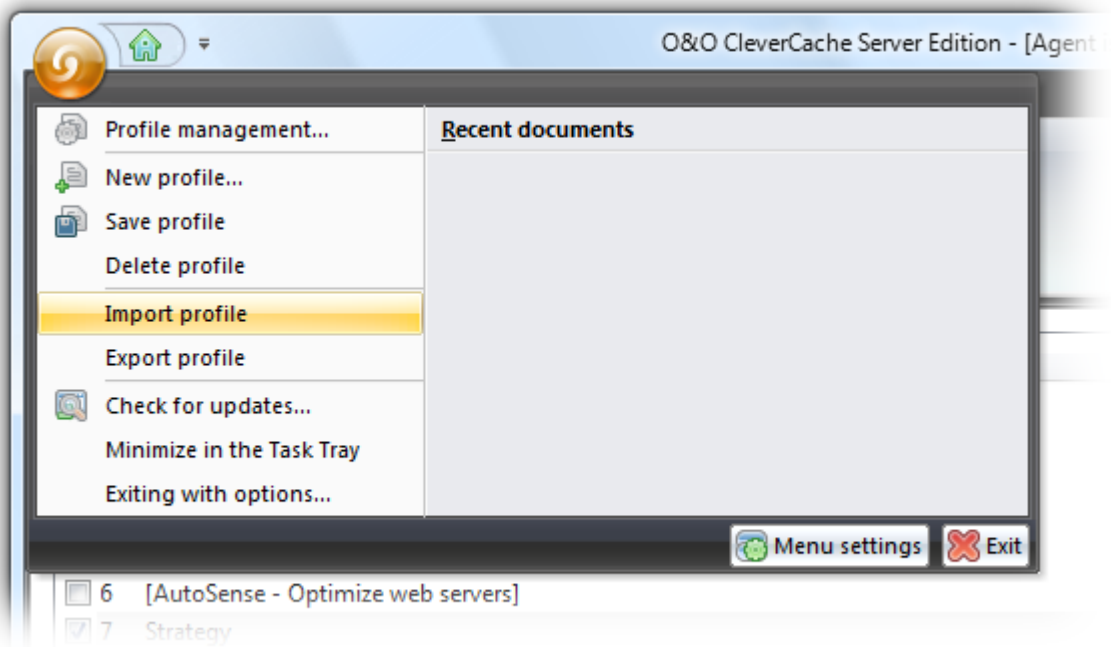
Importing and Exporting Profiles

The exporting and importing of manually-created O&O CleverCache profiles is very simple. O&O CleverCache profile filenames contain the file extension **".cpf"**

To export a profile, first select the profile from the list of profiles. Please note that it is not possible to export the predefined O&O AutoSense profiles. In the menu labeled **File** select **Export Profile**. In the window that appears, enter the filename and saving location for the new profile file. Then click on **Save**.

To import a profile from a file, select the program menu **File** above on the left side, and then **Import profile**. In the window that appears, select the O&O CleverCache profile file you would like to import and then click "Open". It is also possible to import a desired profile file ("**.cpf**") simply by double-clicking on it in its respective location on the Desktop or Windows Explorer.

Manage profiles



File menu

Customize settings

If you would like to modify the "default" settings in O&O CleverCache, it is first necessary that you create a new Profile. For this, click on **Profile/New profile** on the Ribbon Bar.

Program settings can be reset to their default values at anytime. To do so, simply click **Default settings** from the **Profile** Menu. Doing this will delete all profiles and changes made since the program's installation, resetting the software to its original configuration.

More:

[File Cache Settings](#)

[Mem-O-Free and Mem-O-Safe](#)

[System tuning](#)

[View](#)

File Cache Settings

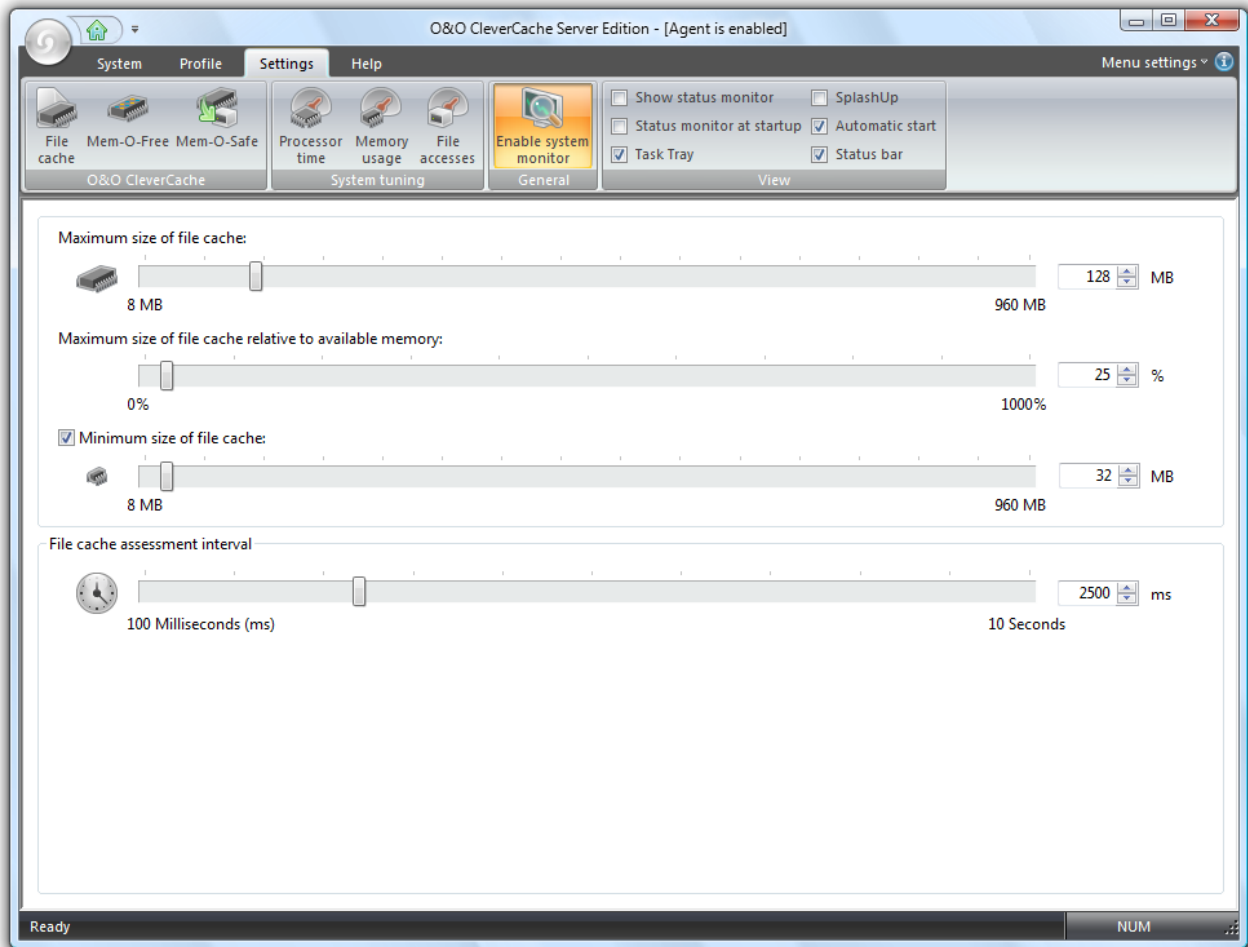
Four slide bars allow you to control [the minimum and maximum amounts of the file cache](#) in both megabytes or as a percent of the total memory available.

Using the sliders you can define a maximum cache size in both megabytes or as a percent of the total main memory. The maximum size of the file cache is either 960 MB or the full size of the main memory itself. Should you enter in both values, the smaller value of two will be used. You can also set a minimum value for the cache in megabytes.

A more detailed explanation of the issues surrounding caching in Windows can be found in the chapter entitled "[Caching Problems in Windows](#)".

Note: If you are using one of the O&O AutoSense profiles, it is not possible to make any changes to the settings. To make manual changes, however, to these settings, it is necessary to first [create a profile](#).

Customize settings



File Cache Settings

More:

[Light System Loads](#)

[Normal System Loads](#)

[Heavy System Loads](#)

File Cache Assessment Interval

O&O CleverCache monitors the use of the file cache in Windows in defined intervals. These intervals can be adjusted between 100ms and 10s.

The default value is 2.5 seconds (2500 ms), meaning that every 2.5 seconds the file cache is reassessed. Generally, this default interval is fine for normal operation. However, if you would like to change this assessment interval, select a number between 100 and 1000 ms. Please remember that too low a value can lead to a surplus load on limited resources. For this reason, this variation is only recommended on heavily loaded systems to deal with the high rate of reading and writing.

If the load on your file cache is light, it is possible to increase the assessment interval to a higher value. Because the intervals are no longer so short, however, the file cache may need to rise temporarily above the maximum value set by the user.

Note: Do not change the default settings, if you are not completely aware of the potential consequences of those changes.

Light System Loads

When your system experiences only minimal system loads, you can set your file cache settings very low because only a few number of files are read at any given time. Because of this, the strain on the file cache is very low.

The following is a table containing guidelines for adjusting the file cache settings according to the size of your main memory.

Size of Main Memory	Absolute Maximum	Relative to Available Memory
512 MB	192 MB	100%
1 GB	348 MB	150%
2 GB	696 MB	200%
4 GB	1392 MB	200%

Normal System Loads

For systems with normal system loads, it is recommended to utilize one of the O&O AutoSense profiles. This will take care of all of the necessary adjustments.

The following is a table containing some clues regarding the file cache settings according to the size of your main memory.

Size of Main Memory	Absolute Maximum	Relative to Available Memory
512 MB	352 MB	100%
1 GB	704 MB	100%
2 GB	1408 MB	100%
4 GB	2816 MB	100%

Heavy System Loads

If your PC or server experiences heavy system loads as a result of activities such as video editing, graphics, database, or real-time applications, it is important to consider how often and how many files are read and written on your system.

The following is a table containing guidelines for adjusting the file cache settings according to the size of your main memory.

Size of Main Memory	Frequency of Data Access	Absolute Maximum	Relative to Available Memory
512 MB	Low	128 MB	100%
512 MB	Often	192 MB	200%
1 GB	Low	192 MB	100%
1 GB	Often	348 MB	200%
2 GB	Low	384 MB	100%
2 GB	Often	768 MB	200%
4 GB	Low	768 MB	100%
4 GB	Often	1536 MB	200%

Mem-O-Free and Mem-O-Safe

The options **Mem-O-Free** and **Mem-O-Safe** can be found in the tab **Settings**. As is the case with other O&O CleverCache settings, it is necessary to create your own profile when making changes to these features. Whenever the pre-defined O&O AutoSense profile is active, these settings are deactivated.

[Mem-O-Free](#) gives you the ability to control the amount of available memory. If the amount of free memory falls below the threshold set by you, Mem-O-Free automatically starts, freeing additional memory by forcing Windows to save unneeded data to the hard disk.

[Mem-O-Safe](#) is a feature designed to reduce the risk of a possible data loss in the event of a system crash. With this option, users are allowed to manually change the update interval for the Windows file cache.

More:

[Mem-O-Free](#)

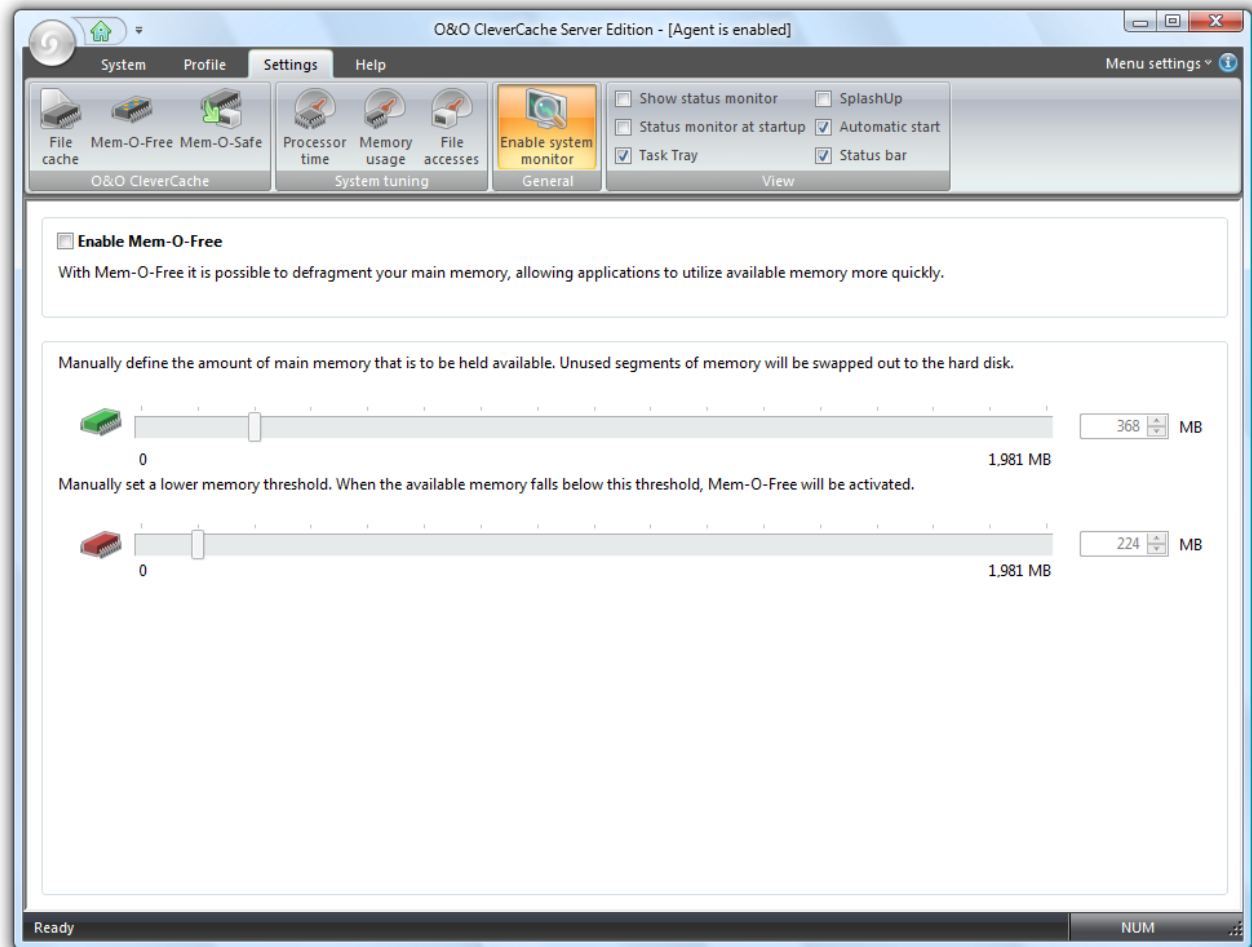
[Mem-O-Safe](#)

Mem-O-Free

Note: If you are using one of the O&O AutoSense profiles, it is not possible to make any changes to the settings. To make manual changes, however, to these settings, it is necessary to first [create a profile](#).

In the section labeled "Mem-O-Free", you have the ability to define a lower memory threshold. How much memory is to be released can also be set.

Mem-O-Free enables you to control the amount of main memory available for use during normal Windows operations. If the amount of free memory falls below the threshold set by you, Mem-O-Free automatically starts, freeing additional memory by forcing Windows to save unneeded data to the hard disk.



Mem-O-Free settings

Mem-O-Safe

Note: If you use predefined O&O Auto Sense profiles, they can change any settings at this point. If you would like make manual changes, however, it is first necessary that you create your own profile.

Customize settings

The "Mem-O-Safe" feature in O&O CleverCache reduces the risk of possible data loss in the event of a system crash. This reduction in risk is achieved by allowing users to manually set the assessment interval for the file cache in Windows.

The more you want to transfer data from the cache to the hard disk, the lower you have to set the interval. The minimum is 50 milliseconds.

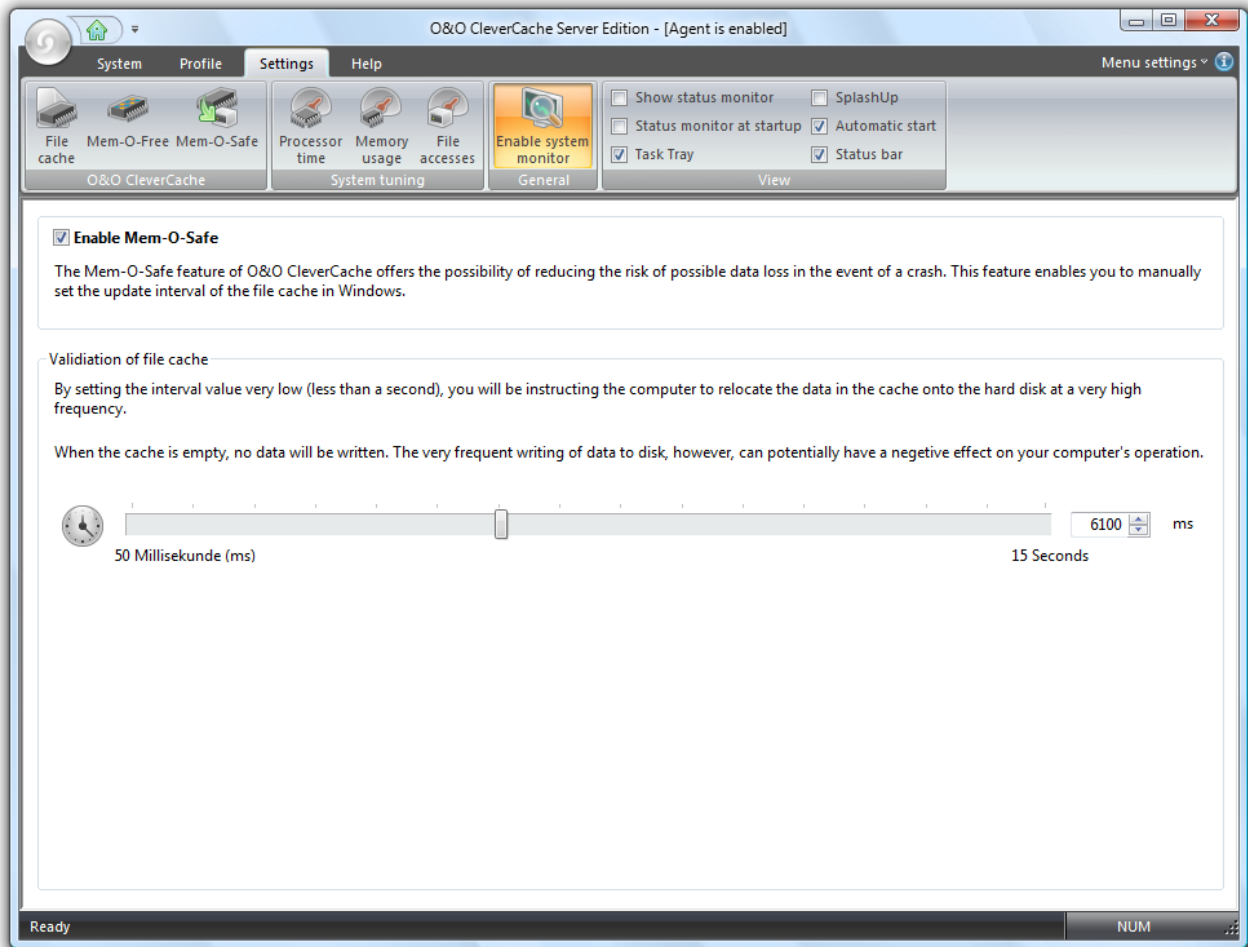
Before your data is written to the hard disk, they are first written to the file cache. The rationale behind this design is efficiency. Because the constant writing of small amounts of data to disk would not be an efficient use of time, this system was developed to optimize the process and overall performance. For this reason, Windows saves data to disk in intervals, so that the system can economize on the amount of data saved at once.

This interval, although defined by Windows, is not set in stone. It is determined according to a number of factors: the size of the file cache, the system speed, and results of the last write process. Generally, this interval is anywhere between 4 and 15 seconds.

If a system crash happens to fall between those intervals (e.g. program error, accidental shutdown, or power outage), data stored in the file cache is lost forever.

Important: If you set the interval value to low (less than a second), you will be instructing the computer to save data to disk with a very high frequency. On the other hand, should this value be set too high, system performance will increase. However, along with higher performance, the risk of data loss in the event of a system crash also increases.

Customize settings



Mem-O-Safe

System tuning

Under **System tuning** you will find more functions summarized, which optimize the work on your operating system or accelerate it. These settings enable you to optimize the performance on your system.

Important: Please note that these settings will not be saved in a profile but rather will be immediately applied to your system.

More:

[Processor Time](#)

[Memory Use](#)

[File Access](#)

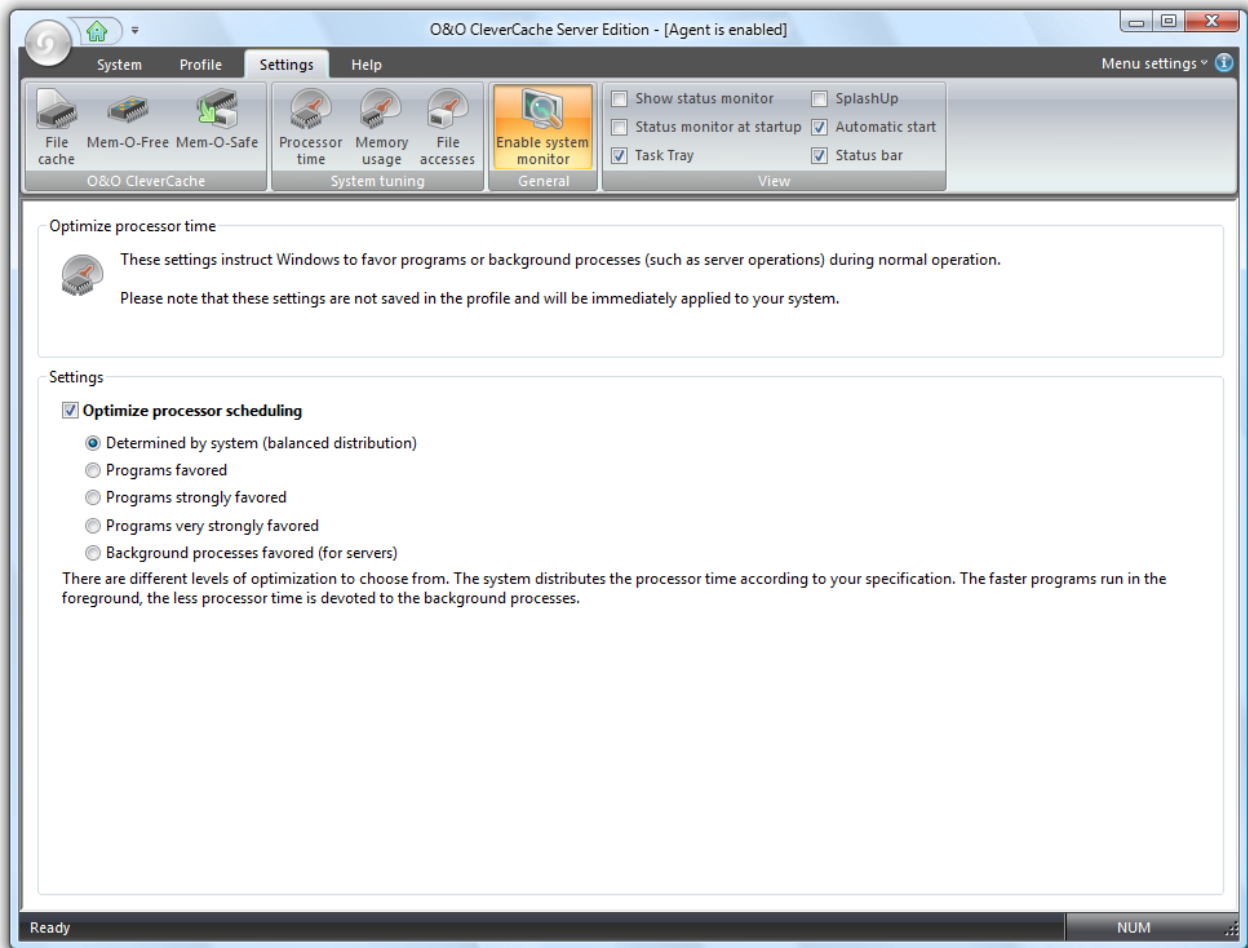
Processor Time

These settings instruct Windows to favor either programs or background operations (in server applications).

Customize settings

There are different levels of optimization from which to choose. Depending on your preferences, the system will schedule the processor time accordingly. The faster the programs are running in the foreground, the less scheduled processor time will be allocated for other processes, making for slower background operations.

Important: Please note that these settings will not be saved in a profile but rather will be immediately applied to your system.



Enable processor time

Memory Use

These settings enable you to optimize the use of the main memory on your system.

The memory can be optimized to favor either the quick execution of applications or the quick access of files.

The option "Prohibit the swapping of the kernel to disk" can be used to instruct Windows to avoid the swapping of integral operating system components to the hard disk. This can improve the performance of the operating system.

Important: Please note that these settings will not be saved in a profile but rather will be immediately applied to your system.

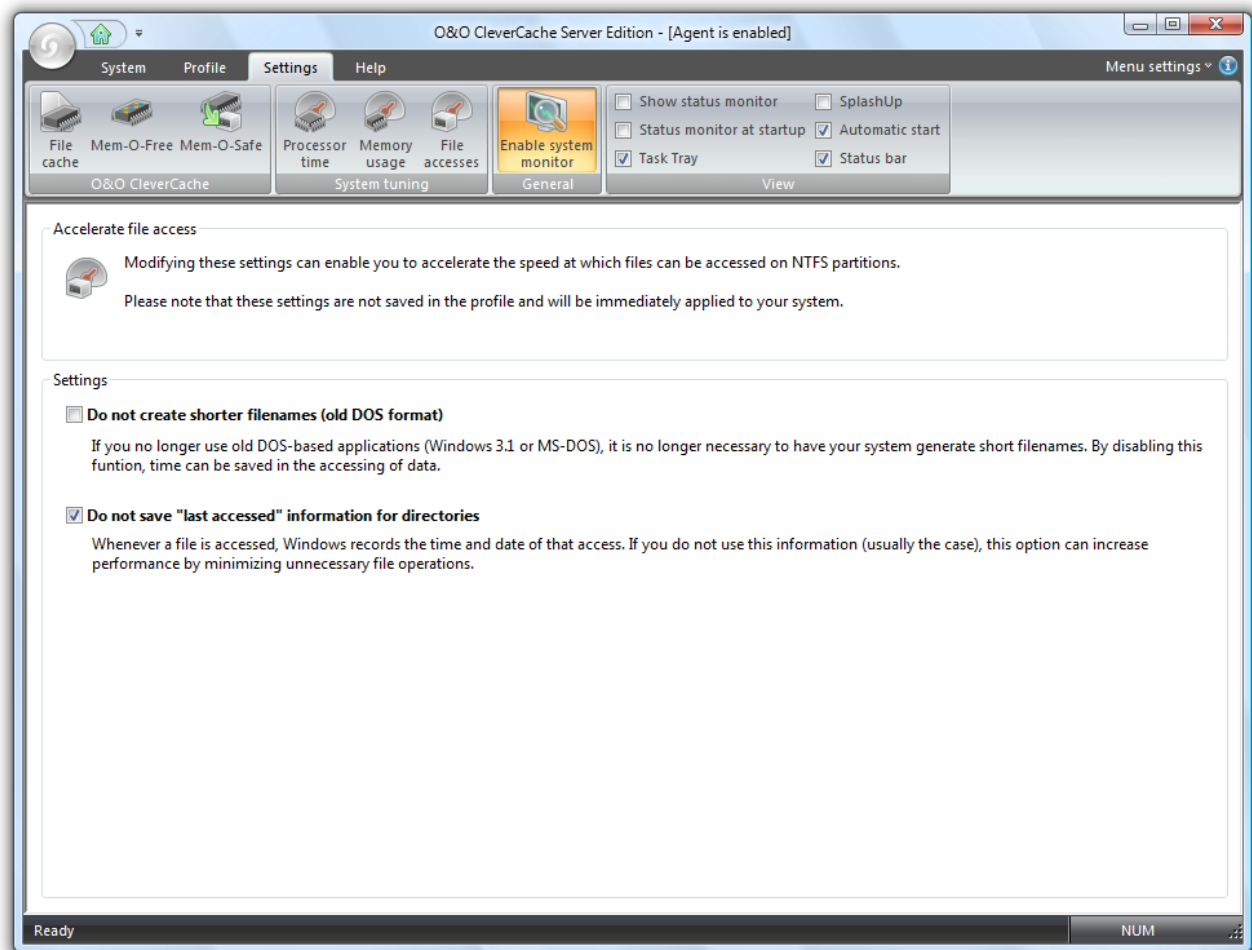
File Access

These settings allow you to accelerate the speed at which data are accessed on NTFS-based partitions.

If you no longer use DOS-based applications on your computer (MS-DOS or Windows 3.1), it is no longer necessary to store short versions of filenames on your system. Deactivating this function can reduce the time it takes to access data on your system.

With every access of data in Windows, information regarding that access, including the date and time, are stored to disk along with the data itself. If you do not have the need for this information (which is the case for most people), you can use the option "Do not save 'last accessed' information for directories" to save time by avoiding writing and reading of unneeded file information.

Important: Please note that these settings will not be saved in a profile but rather will be immediately applied to your system.



File Access

Set up view

In the register **Settings** you will find several possibilities to adapt the view.

Display status monitor

Displays the status monitor, even if O&O CleverCache is only active in the background.

Status monitor at the start

Displays the status monitor at startup.

System tray

Shows the program icon in the system tray and informs you on running processes.

Start screen

Shows the program interface of O&O CleverCache at the start of the program.

Automatic start

Starts O&O CleverCache (control center) automatically when a user logs on.

Status line

Displays the status line.

Status Monitor

The Status Monitor in O&O CleverCache is a small window that displays the most important statistics, even when the Control Center is closed.

- You can display the status monitor over **Settings/View**.

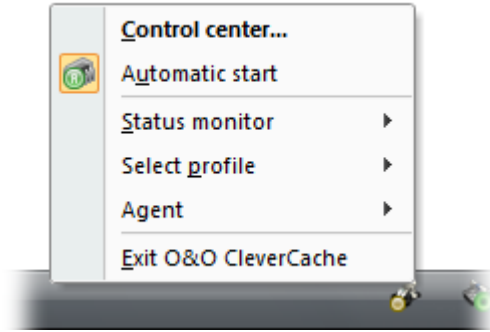
In the System Monitor, you can see the very same statistical data and graphs as in the Cache Monitor located in the Control Center.

The Status Monitor settings can be modified to be displayed "always on top" of other active windows, to always align, or "snap", to the edge of the screen, or to have varying levels of transparency. All of these options are available by right-clicking on the O&O CleverCache icon in the task tray.

TrayIcon (Notification area icon)

The status of the file cache optimization cannot be controlled over the user interface, but over the TrayIcon. The TrayIcon is located on the Task bar.

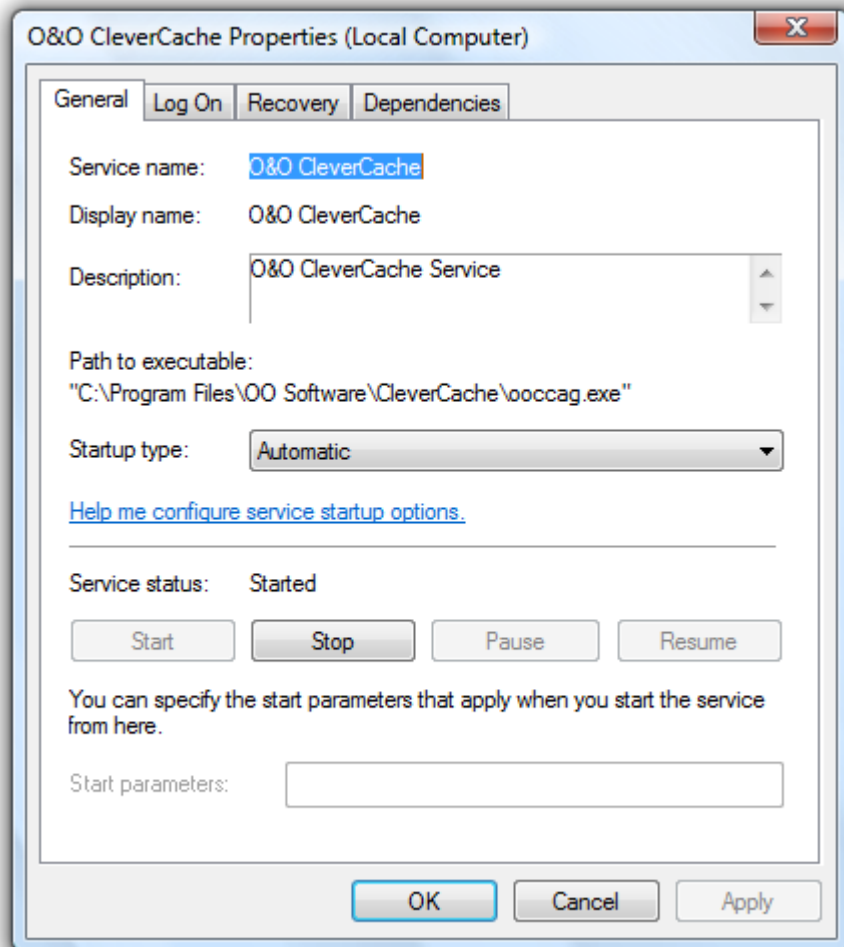
Customize settings



TrayIcon with selection functions

O&O CleverCache in Windows

The O&O CleverCache program consists of a Windows Agent, or "Service", and a graphical interface, called the "O&O CleverCache Control Center". After installation has completed, the O&O CleverCache Agent is configured to automatically run in such a way that no user input is necessary.



O&O CleverCache-Agent, also called "Service" under Windows

The O&O CleverCache Agent is integrated into the Windows operating system and is started when the system starts. First, the system is checked, afterwards, O&O CleverCache will configure itself independently. The software chooses the best settings for the most optimal memory usage. This means that when you are busy getting things done, the last thing you will ever have to think about is changing your memory settings.

Note: After the O&O CleverCache Agent, called "Agent" in the program itself, has started, it runs quietly in the background. The graphical interface, "O&O CleverCache Control Center", only needs to be started when you wish to make manual changes to the software's settings or parameters.

Support and Contact

To receive more information about O&O CleverCache 7, please visit our website, <http://www.oo-software.com>, and get the latest information about product developments and support. Also included on our website are regularly updated FAQs and Knowledge Bases that address the most common problems and questions regarding our products.

All registered customers receive installation support, free of charge, for the first 30 days after registration. When contacting our Support Team, please do not forget to have your registration code available.

In addition, it may be helpful to read our frequently asked questions (FAQ) section of our website before you contact our support department. It is always possible that your specific question or problem may have already been addressed.

O&O Software

Address: Am Borsigturm 48
13507 Berlin
Germany
Telefon: +49 (0)30 4303 4303
Fax: +49 (0)30 4303 4399
Internet: <http://www.oo-software.com>
E-Mail: support@oo-software.com

Authorized Resellers

Our authorized reseller partners in over 30 countries stand ready to assist you with answers to all questions regarding the licensing and purchase of our software products. Their names and addresses may be found on our website, under the heading "Partner – Find Resellers". We would also be more than happy to assist you in finding the partner closest to you.

End user license agreement 2.1 (EULA)

O&O Software

General and Specialized Section

General Section

IMPORTANT – PLEASE READ CAREFULLY

This End User License Agreement (EULA) is organized into 2 sections: a general part, which is valid for all O&O products, and a specialized part, which includes the particular terms of each corresponding product. By accepting both parts of the license terms they automatically form part of your contract with O&O Software, Am Borsigturm 48, 13507 Berlin. If you have any questions regarding this contract and the license terms, our Service Team is available to help you under info@oo-software.com.

The software product is protected by copyright laws and international copyright contracts as well as other laws and agreements concerning intellectual property.

1.Object and form of delivery

(1) You receive the software covered by the contract in executable form (Binary code) together with the relevant documentation released by O&O according to Section (6).

(2) The software provides the range of functions described in the given documentation. The documentation regarding functionality may be consulted prior to concluding the contract in the internet presentation on the following site <http://www.oo-software.com/>.

(3) Delivery will be made according to the way in which you have purchased the software, either by having a disk directly handed over or sent by mail to an address you have supplied or through the forwarding of license as well as any required download information to a given E-mail address.

(4) If you are currently receiving updates as part of a maintenance agreement, these will continue to be supplied in the same way as the initial software delivery, i.e., for a disk sent by mail, a disk containing the update will be sent to the given address: for electronically delivered keys, a key for downloading updates will be sent to the given E-mail address.

(5) Changes to the delivery or E-mail address can only be taken into consideration when they are supplied in writing or by E-mail to the address or E-mail address indicated on <http://www.oo-software.com> at least two weeks before delivery of the update.

(6) A printed copy of the documentation will not be included in delivery. The documentation consists primarily of electronic aids.

2.Requirements for application (system requirements)

(1) Installation of the software is not part of the agreement.

(2) Depending on the software, there are certain system requirements that must be met in order to use the software according to the terms of this contract. These will be defined according to each product in the specialized section of this contract.

3.Rights of use, including test versions, unauthorized transfer, and application

(1) O&O grants you, upon payment of the agreed one-time fee, a permanent, spatially unlimited and non-exclusive right to use the software.

(2) Test versions – if you have installed a test version of one of our products taken from the O&O Website <http://www.oo-software.com/>, the right of use will be, according to the program, for a limited time only and/or technically restricted.

(3) One copy of the software is entitled to be used on a maximum of one (1) output device/workstation simultaneously.

(4) If you want to use the software on more than one output device/workstation, the rights of use must be extended accordingly. To find out which O&O products are also available as volume licenses, please consult (<http://www.oo-software.com/>). The separate price list concerning O&O Volume Licenses will apply to extending the rights of use without redelivery.

(5) Any use beyond that agreed upon in the contract is one in violation of the contract. In such a case, you are required to report this use that exceeds the rights of use to the supplier without any delay. The parties will then try to bring about an agreement for extending the rights of use. For the duration of the excessive usage, i.e., until the conclusion of such an agreement or the cessation of the excessive usage, you are required to pay compensation for this excessive usage according to the amount indicated in our price lists. The amount of compensation will be calculated on the basis of a four year, straight-line depreciation. If we are not informed of the excessive usage, a contract penalty in the amount three times the price of the usage indicated in the price list will be due O&O.

(6) You are entitled to create a backup copy of the software and to conduct ordinary data backups. The creation of more copies than the amount needed for the backing up of any future usage (including the backup copies and data backups) is not allowed.

(7) Copyrights and other trademarks within the software may not be altered or removed. They must be transferred onto every copy of the software.

(8) Unauthorized transfer – only when you have purchased the software with an accompanying disk are you permitted to transfer it and then, only under the following conditions: a resale of the software is only permitted when it involves an entire software copy, i.e., by surrendering your own usage of the purchased copy, you are entitled to transfer these rights of use of the disk onto a third party according to the terms of the agreement existing between you and O&O. When making such a transfer, you are required to hand over to the third party all materials related to the software that are covered in the contract and to delete the software from any storage volumes (e.g., hard disks) remaining in your possession.

(9) Unauthorized rental and service – The purchase of this contract does not entitle you to any public transfer or rental of the software. You are also not entitled to include the software as part of your providing services for and in the presence of any third parties. You may purchase an appropriate license from O&O for doing this.

4. Payment

(1) The prices are given with the corresponding sales taxes included, unless otherwise indicated.

(2) Test versions – Downloads of test versions offered by O&O are provided free of charge, unless otherwise indicated.

(3) If you receive updates of your programs as part of a Maintenance Agreement, the terms of payment in these contracts will apply to these Maintenance Agreements.

(4) O&O is entitled to forward any data it has received onto third parties requiring it for purposes of collection.

(5) Until payment is made in full, O&O retains possession of all rights, particularly those concerning copyrighted rights of use, on the materials included in this contract. O&O is specifically entitled to cancel a contract, for example, when your payment is delayed, it prohibits the further using of the software and demands the surrendering of all copies or this being impossible, to demand their deletion. Should a third party have access to the object of purchase before payment is completed for the contractual software, you are required to inform this third party about the object being the property of O&O and to inform O&O, in writing, about the third party's access.

5. Material defect and defect of title

(1) The software package or download you receive is free of any material defect or defect of title.

(2) A material defect exists when the software is unable to be used as described in the documentation appearing on the website and included in delivery or available for downloading.

O&O is constantly checking to make sure that other sources are not misrepresenting the functions and properties of the software as described in the documentation. You can therefore assume that any descriptions beyond those found in the software documentation have not originated with O&O and are also unknown to it. Please inform O&O if you learn of any software descriptions that include functions and properties not mentioned in the documentation.

(3) Please inform O&O if you learn of any software descriptions that include functions and properties not mentioned in the documentation.

(4) Any claims concerning defects of material and/or title related to the software have a limitation period of two years subsequent to delivery of the program or transmission of the serial number needed for downloading. If you are not a private individual, the warranty period is shortened to one year.

If O&O has fraudulently concealed a material defect, a three year limitation period will cover claims related to this defect.

Payment for compensation that you might have been entitled to as a result of cancellation or an abatement can be refused upon expiration of the limitation period.

(5) You are required to inform O&O, in writing if possible, of any defects that arise immediately upon their discovery. While doing so you should also describe, as well as possible, how the defect is communicated, the effect it has on the program, and under which circumstances it occurs.

(6) Should defects be reported to O&O within the limitation period, it will undertake a cure free of charge.

(7) As part of the cure, the corrected software will be redelivered as agreed. An on-site analysis and correction of the error on your system will not take place.

O&O assumes the ensuing expenses for the cure, in particular the costs for transport, labor, and material. You are personally responsible for installation. O&O specifically does not assume on-site installation as part of its obligation with regard to defects of material or title.

Should a change of the program be required as part of the cure, O&O will make the necessary changes in the documentation without any charges.

(8) After the unsuccessful expiration of a deadline you set for cure, you can cancel the contract or reduce the purchase price and demand compensation instead of service or the replacement of any futile expenditures.

(9) A deadline is not required when

- a) O&O refuses both kinds of cure, even if it is entitled to do so as a result of the arising expenses or
- b) the cure is impossible or
- c) the cure is unacceptable to you or
- d) the cure is unsuccessful.

A subsequent improvement is considered a failure after the second unsuccessful attempt unless there is something particular about the type of software or the defect itself or the surrounding circumstances that would indicate otherwise.

(10) You are not entitled to cancel the contract if the defect is negligible, nor may you, in this event, demand compensation instead of full service.

(11) In the event of cancellation, compensation is due for any uses made. The compensation for use will be based on a four year, straight-line depreciation of the purchase price.

(12) As a result of the abatement, the purchase price will be reduced by the amount which is calculated for deducting the defect from the value of the software. The standard used will be its value at the time the contract was concluded. The amount, when necessary, is to be calculated by estimation. As a result of this reduction, any amount larger than that paid for the reduced purchase price will be refunded.

If it turns out that a reported problem did not arise as a result of a defect in the software and if you can be accused of malice or gross negligence, then O&O is entitled to invoice you for: 1) services; 2) the expenses for analysis and; 3) correction of the problem, according to the amount stated in the price list.

(14) The seller's warranty is canceled when changes are made on the software without expressed written consent or when the software is not used as intended or used in an improper software environment, unless you can prove that these facts had nothing to do with the problems that occurred.

6.Limitation of compensation

(1) O&O is liable for compensation for every legal ground to the extent described in the following provisions.

(2) The extent of liability of O&O for damages caused by malice or gross negligence arising from O&O itself or one of its vicarious or legal agents is unlimited.

(3) There is no limit to the extent of liability of O&O or any of its legal or vicarious agents for damages involving injury to life, physical well-being or health, or for simple breach of duty.

(4) There is unlimited liability for damages caused by serious organizational fault on the part of O&O as well as for damages arising from a missing guaranteed characteristic.

(5) For the breach of an essential contractual duty, O&O is liable for damages normally foreseen in a contract when none of the instances in provisions (2) – (4) applies.

(6) Any further liability for compensation is excluded, specifically excluded is liability without fault.

(7) Liability as defined by the product liability law remains untouched.

(8) If damage can be traced to have arisen through a fault on the part of O&O as well as on the part of yourself, you must have your share of the fault evaluated.

You are responsible for making a standard backup of your data at least once a day. For data loss caused by O&O, O&O is only liable for the expense of duplicating the data on your backup copies that need to be created and for the restoration of data which would have also been lost during a standard backup procedure.

7. Final provisions

(1) You may only balance claims from O&O with indisputable or legally valid claims.

(2) Changes and amendments to this contract must be made in writing. This also applies to changes to this provision.

(3) The contract is subject to German law. The uniform UN purchasing law (CISG) as well as the UNIDROIT Factoring Agreement of Ottawa do not apply.

(4) Any general terms and conditions on your part will not be applied.

In the event you are not a private individual or a resident of the Federal Republic of Germany, we agree that the district court in Berlin will be the competent court for litigation arising from this contract.

8. Contact

If you have any questions concerning the O&O Software License Agreement or wish to speak with O&O, please get in touch with us.

O&O Software GmbH, Am Borsigturm 48, 13507 Berlin, Germany.

Telephone: +49 (0)30 4303 4303, Fax: +49 (0)30 4303 4399

E-Mail info@oo-software.com / sales@oo-software.com, Web www.oo-software.com

Special section

O&O BlueCon

Important note on the Windows PE Start CD

The Microsoft® Windows™ Preinstallation Environment contained in this hardware or this software may only be used for starting, diagnosing, setup, restoration, installation, configuration, testing or disaster recovery.

End user license agreement 2.1 (EULA)

NOTE: THIS SOFTWARE CONTAINS A SECURITY FEATURE THAT WILL CAUSE END USER'S SYSTEM TO REBOOT WITHOUT PRIOR NOTIFICATION TO THE END USER AFTER 72 HOURS OF CONTINUOUS USE.

Amendment to: 2. Requirements for application (system requirements)

The software requires the Windows 2000 (all Editions), Windows Server 2003 (all Editions), Windows XP (all Editions), Windows Vista (all Editions) or Windows Server 2008 (all Editions) operating systems. Usage within the terms of this contract is not achieved without the application of these operating systems.

The product at hand can only be employed according to the acquired license. The following license types exist for O&O BlueCon:

O&O BlueCon Admin Edition

You are authorized to install and use the software product on all computers a) in the possession of the company (legal person or natural person(s) in the case of corporations) owning the license and b) all located at a single site. This license is bound to a single natural person and is non-transferable.

O&O BlueCon Tech Edition

You are authorized to install and use the software product on all computers. This includes computers that do not belong to the company owning the license (also known as Service Technician's License). This license is bound to a single natural person and is non-transferable.

O&O CleverCache

Amendment to: 2. Requirements for application (system requirements)

O&O CleverCache Professional Edition

The software requires the Windows XP (all Editions), Windows Vista (all Editions) or Windows 7 (all editions) operating systems. Usage within the terms of this contract is not achieved without the application of these operating systems.

O&O CleverCache Server Edition

The software requires Windows Server 2003 (all Editions), Windows XP (all Editions), Windows Vista (all Editions), Windows Server 2008 (all Editions), Windows 7 (all Editions) or Windows Server 2008 R2 (all Editions) operating systems. Usage within the terms of this contract is not achieved without the application of these operating systems.

O&O Defrag

Amendment to: 2. Requirements for application (system requirements)

O&O Defrag Professional Edition

The software requires the Windows 2000 Professional, Windows XP (all Editions), Windows Vista (all Editions) or Windows 7 (all editions) operating systems. Usage within the terms of this contract is not achieved without the application of these operating systems. Control of the program through a network management is not possible.

O&O Defrag Workstation Edition

The software requires the Windows 2000 Professional, Windows XP (all Editions), Windows Vista (all Editions) or Windows 7 (all editions) operating systems. Usage within the terms of this contract is not achieved without the application of these operating systems. The O&O Defrag Workstation Edition may be used on computers with or without the user interface. You are entitled to control this program over the separately obtainable network manager.

O&O Defrag Server Edition

The software requires Windows 2000 (all Editions), Windows Server 2003 (all Editions), Windows XP (all Editions), Windows Vista (all Editions), Windows Server 2008 (all Editions), Windows 7 (all Editions) or Windows Server 2008 R2 (all Editions) operating systems. Usage within the terms of this contract is not achieved without the application of these operating systems. The O&O Defrag Server Edition may be used on computers with or without the user interface. You are entitled to control this program over the separately obtainable network manager.

O&O DiskImage

Important note on the Windows PE Start CD

This note is only valid for the O&O DiskImage Professional and the Server Edition Start CD. The Microsoft® Windows™ Preinstallation Environment (Windows PE) is not a part of O&O DiskImage Express and the Workstation Edition!

The Microsoft® Windows™ Preinstallation Environment contained in this hardware or this software may only be used for starting, diagnosing, setup, restoration, installation, configuration, testing or disaster recovery.

NOTE: THIS SOFTWARE CONTAINS A SECURITY FEATURE THAT WILL CAUSE END USER'S SYSTEM TO REBOOT WITHOUT PRIOR NOTIFICATION TO THE END USER AFTER 72 HOURS OF CONTINUOUS USE.

Amendment to: 2. Requirements for application (system requirements)

O&O DiskImage Express Edition

The software requires the Windows 2000 Professional, Windows XP (all Editions), Windows Vista (all Editions) or Windows 7 (all editions) operating systems. Usage within the terms of this contract is not achieved without the application of these operating systems. Control of the program through a network management is not possible.

O&O DiskImage Professional Edition and Special Edition

The software requires the Windows 2000 Professional, Windows XP (all Editions), Windows Vista (all Editions) or Windows 7 (all editions) operating systems. Usage within the terms of this contract is not achieved without the application of these operating systems. Control of the program through a network management is not possible.

O&O DiskImage Workstation Edition

The software requires the Windows 2000 Professional, Windows XP (all Editions), Windows Vista (all Editions) or Windows 7 (all editions) operating systems. Usage within the terms of this contract is not achieved without the application of these operating systems. The O&O DiskImage Workstation Edition

End user license agreement 2.1 (EULA)

may be used on computers with or without the user interface. You are entitled to control this program over the separately obtainable network manager.

O&O DiskImage Server Edition

The software requires Windows 2000 (all Editions), Windows Server 2003 (all Editions), Windows XP (all Editions), Windows Vista (all Editions), Windows Server 2008 (all Editions), Windows 7 (all Editions) or Windows Server 2008 R2 (all Editions) operating systems. Usage within the terms of this contract is not achieved without the application of these operating systems. The O&O DiskImage Server Edition may be used on computers with or without the user interface. You are entitled to control this program over the separately obtainable network manager.

Amendment to: 3. Rights of use, including test versions, unauthorized transfer, and application

Creation and restoration of images

The source computer and each target computer are required to hold licenses, to create and restore images using O&O DiskImage. One license is sufficient under the previously mentioned terms, if the source and the target computer is one non-virtual workstation. Each virtual machine is seen as an independent computer; in other words, each virtual machine needs its own license.

O&O DiskRecovery

Amendment to: 2. Requirements for application (system requirements)

The software requires Windows 2000 (all Editions), Windows Server 2003 (all Editions), Windows XP (all Editions), Windows Vista (all Editions), Windows Server 2008 (all Editions), Windows 7 (all Editions) or Windows Server 2008 R2 (all Editions) operating systems. Usage within the terms of this contract is not achieved without the application of these operating systems.

The product at hand can only be employed according to the acquired license. The following license types exist for O&O DiskRecovery:

O&O DiskRecovery Personal Edition

You are authorized to install and use the software product on only one computer. Other limitations may apply in the software itself. Please consult the software documentation for more information on these limitations.

O&O DiskRecovery Admin Edition

You are authorized to install and use the software product on all computers

a) in the possession of the company (legal person or natural person(s) in the case of corporations) owning the license and b) all located at a single site. This license is bound to a single natural person and is non-transferable.

O&O DiskRecovery Tech Edition

You are authorized to install and use the software product on all computers. This includes computers that do not belong to the company owning the license (also known as Service Technician's License). This license is bound to a single natural person and is non-transferable.

O&O DiskStat

End user license agreement 2.1 (EULA)

Amendment to: 2. Requirements for application (system requirements)

O&O DiskStat Professional Edition

The software requires the Windows 2000 Professional, Windows XP (all Editions), Windows Vista (all Editions) or Windows 7 (all editions) operating systems. Usage within the terms of this contract is not achieved without the application of these operating systems.

O&O DiskStat Workstation Edition

The software requires the Windows 2000 Professional, Windows XP (all Editions), Windows Vista (all Editions) or Windows 7 (all editions) operating systems. Usage within the terms of this contract is not achieved without the application of these operating systems. The O&O DiskStat Workstation Edition may be used on computers with or without the user interface. You are entitled to control this program over the separately obtainable network manager.

O&O DiskStat Server Edition

The software requires Windows 2000 (all Editions), Windows Server 2003 (all Editions), Windows XP (all Editions), Windows Vista (all Editions), Windows Server 2008 (all Editions), Windows 7 (all Editions) or Windows Server 2008 R2 (all Editions) operating systems. Usage within the terms of this contract is not achieved without the application of these operating systems.

O&O DriveLED

Amendment to: 2. Requirements for application (system requirements)

The software requires Windows 2000 (all Editions), Windows Server 2003 (all Editions), Windows XP (all Editions), Windows Vista (all Editions), Windows Server 2008 (all Editions), Windows 7 (all Editions) or Windows Server 2008 R2 (all Editions) operating systems. Usage within the terms of this contract is not achieved without the application of these operating systems.

O&O Enterprise Management Console

Important note on the Microsoft SQL Server

This product uses the Microsoft SQL Server or Microsoft SQL Server Express Edition. To the extent that these programs are part of the installation of this product, the terms of their licensing related to the use of this software will also apply to the terms of this agreement.

The use of Microsoft SQL Server Express Edition is free of charge in conjunction with this product. The purchase of licenses for O&O Enterprise Management Console and related products is separate from any possible purchase of SQL Server products.

Amendment to: 2. Requirements for application (system requirements)

The software requires Windows 2000 (all Editions), Windows Server 2003 (all Editions), Windows XP (all Editions), Windows Vista (all Editions), Windows Server 2008 (all Editions), Windows 7 (all Editions) or Windows Server 2008 R2 (all Editions) operating systems. Usage within the terms of this contract is not achieved without the application of these operating systems.

O&O FormatRecovery

Amendment to: 2. Requirements for application (system requirements)

End user license agreement 2.1 (EULA)

The software requires the Windows 2000 (all Editions), Windows Server 2003 (all Editions), Windows XP (all Editions), Windows Vista (all Editions) or Windows Server 2008 (all Editions) operating systems. Usage within the terms of this contract is not achieved without the application of these operating systems.

The product at hand can only be employed according to the acquired license. The following license types exist for O&O

FormatRecovery:

O&O FormatRecovery Personal Edition

You are authorized to install and use the software product on only one computer. Other limitations may apply in the software itself. Please consult the software documentation for more information on these limitations.

O&O FormatRecovery Admin Edition

You are authorized to install and use the software product on all computers a) in the possession of the company (legal person or natural person(s) in the case of corporations) owning the license and b) all located at a single site. This license is bound to a single natural person and is non-transferable.

O&O FormatRecovery Tech Edition

You are authorized to install and use the software product on all computers. This includes computers that do not belong to the company owning the license (also known as Service Technician's License). This license is bound to a single natural person and is non-transferable.

O&O MediaRecovery

Amendment to: 2. Requirements for application (system requirements)

The software requires the Windows 2000 (all Editions), Windows Server 2003 (all Editions), Windows XP (all Editions), Windows Vista (all Editions) or Windows Server 2008 (all Editions) operating systems. Usage within the terms of this contract is not achieved without the application of these operating systems.

O&O PartitionManager

Important note on the Windows PE Start CD

The Microsoft® Windows™ Preinstallation Environment contained in this hardware or this software may only be used for starting, diagnosing, setup, restoration, installation, configuration, testing or disaster recovery.

NOTE: THIS SOFTWARE CONTAINS A SECURITY FEATURE THAT WILL CAUSE END USER'S SYSTEM TO REBOOT WITHOUT PRIOR NOTIFICATION TO THE END USER AFTER 72 HOURS OF CONTINUOUS USE.

Amendment to: 2. Requirements for application (system requirements)

O&O PartitionManager Professional Edition

The software requires the operating systems Windows 2000 (all editions), Windows Server 2003 (all editions), Windows XP (all editions), Windows Vista (all editions), or Windows Server 2008 (all editions). Usage within the terms of this contract is not achieved without the application of these operating systems.

O&O RegEditor

End user license agreement 2.1 (EULA)

Important note for working with the Microsoft Windows Registry

Before making changes to the Microsoft Windows Registry (in the following Registry), you should prepare a backup copy of the Registry and ensure that you'll be able to restore the Registry if a problem should arise.

O&O formally declares that it is not responsible for damages arising from the improper use of O&O RegEdit. Changes to the Registry should only be made by experienced users who are aware of the consequences of such changes. A defective Registry can influence the entire stability of the system and lead to a crash of the computer or make it unable to start. This can further lead to loss of data.

Amendment to: 2. Requirements for application (system requirements)

The software requires the Windows 2000 (all Editions), Windows Server 2003 (all Editions), Windows XP (all Editions), Windows Vista (all Editions) or Windows Server 2008 (all Editions) operating systems. Usage within the terms of this contract is not achieved without the application of these operating systems.

Amendment to: 4. Payment

O&O demands no fee for the use of this license. In addition, a fee for this license and this program may not be demanded by any Third Parties, unless this is done with the expressed approval of O&O. When in doubt, please get in touch with us.

O&O RescueBox

Important note on the Windows PE Start CD

The Microsoft® Windows™ Preinstallation Environment contained in this hardware or this software may only be used for starting, diagnosing, setup, restoration, installation, configuration, testing or disaster recovery.

NOTE: THIS SOFTWARE CONTAINS A SECURITY FEATURE THAT WILL CAUSE END USER'S SYSTEM TO REBOOT WITHOUT PRIOR NOTIFICATION TO THE END USER AFTER 72 HOURS OF CONTINUOUS USE.

Amendment to: 2. Requirements for application (system requirements)

The software requires the Windows 2000 (all Editions), Windows Server 2003 (all Editions), Windows XP (all Editions), Windows Vista (all Editions) or Windows Server 2008 (all Editions) operating systems. Usage within the terms of this contract is not achieved without the application of these operating systems.

The product at hand can only be employed according to the acquired license. The following license types exist for O&O RescueBox:

O&O RescueBox Personal Edition

You are authorized to install and use the software product on only one computer. Other limitations may apply in the software itself. Please consult the software documentation for more information on these limitations.

O&O RescueBox Admin Edition

End user license agreement 2.1 (EULA)

You are authorized to install and use the software product on all computers a) in the possession of the company (legal person or natural person(s) in the case of corporations) owning the license and b) all located at a single site. This license is bound to a single natural person and is non-transferable.

O&O RescueBox Tech Edition

You are authorized to install and use the software product on all computers. This includes computers that do not belong to the company owning the license (also known as Service Technician's License). This license is bound to a single natural person and is non-transferable.

O&O SafeErase

Amendment to: 2. Requirements for application (system requirements)

The software requires Windows 2000 (all Editions), Windows Server 2003 (all Editions), Windows XP (all Editions), Windows Vista (all Editions), Windows Server 2008 (all Editions), Windows 7 (all Editions) or Windows Server 2008 R2 (all Editions) operating systems. Usage within the terms of this contract is not achieved without the application of these operating systems.

O&O UnErase

Amendment to: 2. Requirements for application (system requirements)

Die Software setzt das Betriebssystem Windows Server 2003 (alle Editionen), Windows XP (alle Editionen), Windows Vista (alle Editionen), Windows Server 2008 (alle Editionen), Windows 7 (alle Editionen) oder Windows Server 2008 R2 (alle Editionen) voraus. Usage within the terms of this contract is not achieved without the application of these operating systems.

The product at hand can only be employed according to the acquired license. The following license types exist for O&O UnErase:

O&O UnErase Personal Edition

You are authorized to install and use the software product on only one computer. Other limitations may apply in the software itself. Please consult the software documentation for more information on these limitations.

O&O UnErase Admin Edition

You are authorized to install and use the software product on all computers a) in the possession of the company (legal person or natural person(s) in the case of corporations) owning the license and b) all located at a single site. This license is bound to a single natural person and is non-transferable.

O&O UnErase Tech Edition

You are authorized to install and use the software product on all computers. This includes computers that do not belong to the company owning the license (also known as Service Technician's License). This license is bound to a single natural person and is non-transferable.