

 O&O DiskRecovery 7

# Copyrights

Text, illustrations and examples have been produced with great care. The editor is neither legally nor in any other way liable for incorrect information given and its possible consequences.

This document is protected by copyright. All rights reserved. Without written approval no part of this document may be reproduced through photocopying, microfilming or any other procedure, nor may it be translated into a language used by machines, especially data-processing plants. Rights are likewise reserved for quotation in lectures, on radio and television.

Microsoft, Windows 2000, Windows XP, Windows Vista, Windows 7, Windows 2003, Windows 2008 and Windows 2008 R2 are registered trademarks of the company Microsoft Corp., Redmond, WA, USA. O&O and the O&O-logo are registered trademarks of the O&O Software GmbH, Berlin.

Rev. 23.03.2011 12:22

©2004-2011 O&O Software GmbH • Am Borsigturm 48 • 13507 Berlin • Germany

<http://www.oo-software.com>

# Contents

---

<b>About O&amp;O DiskRecovery 7</b> .....	<b>1</b>
Overview of important functions.....	2
Getting the right Version to meet your needs?.....	2
Important information regarding data restoration.....	3
What you should do when data accidentally gets deleted.....	3
Preparing for an emergency.....	4
<b>System requirements</b> .....	<b>5</b>
<b>Installation</b> .....	<b>6</b>
Information about licensing.....	6
Enter license.....	6
Online registration.....	8
What are the advantages of online registration?.....	8
How do I register online?.....	9
Uninstall.....	9
Updates for O&O DiskRecovery.....	9
<b>Quick Start</b> .....	<b>10</b>
<b>Getting started</b> .....	<b>11</b>
Start O&O DiskRecovery.....	11
Selecting a drive.....	12
Selection of search process.....	13
Set up settings for the search.....	16
Filter for file types.....	17
Start search.....	19
Run Search.....	20
Select files to be restored.....	21
Preview.....	22
Filter.....	22
Select target folder.....	23
Creating a Report.....	24
Saving Files.....	25

---

Completing the Data Recovery.....	26
Saving a Data Recovery and continuing it later.....	26
<b>File types and signatures.....</b>	<b>27</b>
Adding Your Own Signatures.....	27
Automatically Loading Signatures.....	28
List of Supported File Types.....	29
<b>Optimize data search and rescue.....</b>	<b>45</b>
Quicker Scanning with O&O SmartScan.....	45
More precise search with O&O DeepScan.....	45
Leaving out file system with O&O RawScan.....	46
<b>Starting O&amp;O DiskRecovery Without Prior Installation.....</b>	<b>47</b>
Run Instant-Installation.....	47
License to Use O&O InstantDiskRecovery.....	48
<b>Support and Contact.....</b>	<b>49</b>
Authorized Resellers.....	49
<b>End user license agreement 3.4 (EULA).....</b>	<b>50</b>

## About O&O DiskRecovery 7

Thank you for choosing O&O DiskRecovery!

It's happened to the best of us: with the blink of an eye important files can be deleted and presumed lost forever. Whether the result of a computer virus, a software error, or user error, this can be devastating. Important documents and business data aside, in the age of digital photography the loss of a captured moment can be irreplaceable.

When such a disaster strikes, what can be done? Many users cut their losses and accept that their files are lost. However, this is not necessarily the way it has to be. O&O DiskRecovery is software designed for the recovery of deleted data. Even when Windows does not offer a viable solution for the recovery of lost data (i.e. the Recycle Bin), hope is now a possibility with O&O DiskRecovery, an easy and secure way to recover data you had thought was deleted. Accompanied by an on-screen assistant, you are guided through the data recovery process, step-by-step. When all is finished you will be able to use the once-deleted data just as before.

We hope this product is a joy for you to use and saves you valuable time at home and the workplace.

Yours O&O Software

[www.oo-software.com](http://www.oo-software.com)

**Important!** If you have deleted data, end all programs running on your computer immediately and start O&O DiskRecovery right away to restore the file. If work on the computer continues as normal, important data can be overwritten making the recovery of desired data more difficult, if not impossible. For this reason it is advised that O&O DiskRecovery be already installed on your system to be ready when disaster strikes. This is the only way to ensure the best success possible for the recovery of lost data.

**Important:** If you have already lost this file by accident, before having installed O&O DiskRecovery, then follow the instructions in chapter [Execute the Instant-Installation](#).

## Overview of important functions

Besides the continuous maintenance and enhancement of the existing program components, you will find several additional new and helpful features in Version 7. Two additionally integrated search algorithms, known from our highly acclaimed test winner O&O UnErase and O&O FormatRecovery, enable you to search for lost data in more detail with O&O DiskRecovery. The list of supported files was also enhanced so that more than 350 file types and about 300 file enhancements can be processed. The advanced data rescue assistant guides you intuitively through the search and restoration process. If you have lost data before installing O&O DiskRecovery, then the simple Instant-Installation will help you with the data rescue.

- Three integrated search processes:
  - Fast search for files even on large hard disks (O&O UnErase)
  - Sector based DeepScan (O&O DiskRecovery)
  - Searches for formatted or structurally damaged partitions (O&O FormatRecovery)
- Enhanced file type recognition; more than 350 file types and about 300 different file extensions from all current media application can be processed.
- The program can now be started from removable drives (instant installation)
- Advanced Wizard to search and restore
- Deep search for files on destroyed partitions and disks
- Preview for some file types before the data restoration
- Disks will also be rescued, where file types have been damaged or destroyed by software
- Searches and restores especially small files (O&O-DeepScan-function)
- No unnecessary restoration of existing files. Thanks to the O&O-SmartScan function existing files are filtered and thus accelerates the search and restore process.
- The activation of the O&O-RawScan function can ignore the file system and thus also rescue formatted disks.
- Supports all hard disks, changeable drives (e.g. ZIP) a memory cards as well as USB sticks, CompactFlash and most of the digital cameras
- Supported by 64-Bit

## Getting the right Version to meet your needs?

O&O DiskRecovery is available in three different versions: Personal, Admin, and Tech Editions. All three differ with respect to their functionality as well as to the nature of their software licenses.

- The Professional Edition (PE) License is computer-bound, meaning that the software may only be used on a single computer. The PE is ideal for home users.
- The Admin Edition (AE) may be used on any number of computers within a company. The Administrator License is issued in the name of a person: in other words, it is issued per administrator. It is not permitted for this program to be installed on non-company computers or be used as part of a service provided to others. The AE is ideal for all companies looking to recover deleted data from company-internal computers.
- The Tech Edition (TE) expands the AE to include the use of O&O DiskRecovery on non-company computers. This license grants this software's use as part of services provided in the field of data recovery. This software is licensed per technician, enabling licensed technicians to run it on any number of computers. The TE is ideal for all companies offering data recovery services to their customers.

Upgrades to another version can be made through the system menu. In the program window, click on the product icon top left, and then on "Upgrade from Professional Edition".

If you require additional information regarding the licensing of this product, please contact us. We would be glad to help.

## Important information regarding data restoration

If you would like to restore mistakenly deleted files, you should try to avoid, as much as possible, writing to the affected disk drive. This can overwrite data preventing them from being recovered at all. It is for this reason alone that we recommend the installation of O&O DiskRecovery before a problem occurs.

O&O DiskRecovery is able to restore data, in which the directory structure and the information is already deleted or have been overwritten. This can happen when a partition is formatted or new files are created. With the help of a special process, O&O DiskRecovery attempts to find and restore these data back into valid file formats.

Unfortunately, not all files can be recovered without error. For example, the highly fragmented files can be very difficult, if not impossible, to recover. In such a case, the regular use of a defragmentation tool such as [O&O Defrag](#) can not only help you avoid this problem, but also can strongly contribute to the improved performance of your system.

Please note, however, that it may not be possible to restore all deleted data if the areas, where the deleted data was located has already been overwritten, it is not possible to restore them with O&O DiskRecovery. If some areas have been partly overwritten, some files may be incomplete possibly leading to errors.

Should you have further questions, you can always contact our technical support team. Please note that we can only provide this support for registered users of the software according to their individual license agreements. However, in conjunction with our subsidiary, the support staff of [O&O Services GmbH](#) would be more than happy to offer you fee-based assistance in rescuing your lost data.

**Note:** Please do not delete any data for fun or for test purposes without first making a backup copy using e.g. [O&O DiskImage](#). We strongly recommend that you regularly make back up copies of your important data and store them in a safe place.

## What you should do when data accidentally gets deleted

If possible, do not save anymore data onto the system after the data in question have been deleted. Close all applications without saving any data to the disk or other data storage media (if possible). Even searching or downloading data rescue programs from the Internet can overwrite areas of your hard disk, restoring your lost data is thus complicated or even becomes impossible.

If in doubt, shut down the computer!

Think calmly about how the data were deleted. Try not to panic and quickly restore the data in question! Reckless behavior can lead to even more data loss.

Make sure that the files are not located in the **Windows Recycle bin**

If data has really been deleted, you should use O&O DiskRecovery to run a data rescue.

If you have O&O DiskRecovery installed, start the program and proceed as directed in chapter [Getting started](#).

**Note:** If you **haven't** installed O&O DiskRecovery yet, proceed with the [Instant-Installation](#). To execute the Instant-Installation correctly, you will need a second computer and a portable disk or a network connection from which you can access the target computer.

**Note:** If you only have one partition (e.g. only "C:"), you will need an external disks to save the data to be restored, e.g. USB-Stick.

## Preparing for an emergency

1. Install O&O DiskRecovery on the computer, where you want to restore the data in the case of an emergency.
2. Register O&O DiskRecovery with the purchased license code. Without a valid license code it will not be possible to restore data with the O&O DiskRecovery.
3. All necessary preparations are now complete. If you have to restore data due to an emergency, follow the instructions in the section [Getting started](#) or [Quick Start](#)



## System requirements

**Note:** The Information contained in this chapter will not be relevant to you if you are using O&O DiskRecovery as part of the O&O RescueBox or O&O BlueCon. This version can be run directly from the CD on computers lacking operating systems. More information may be found in the O&O RescueBox/O&O BlueCon User's Guide of at <http://www.oo-software.com>

### Operating system

- System requirements of each operating system needs to be fulfilled
- 50 MB free hard disk space
- Supports 32 and 64-bit operating systems
- Windows® 2000 till Windows® Server 2008 R2 (all Editions)

### Access permissions

In order to install and run O&O DiskRecovery, it is necessary for you to be a member of the local administrator group or own an equivalent level of privileges. Domain administrators normally already possess these permissions.

# Installation

**Important:** If you have already lost this file by accident, before having installed O&O DiskRecovery, then follow the instructions in chapter [Execute the Instant-Installation](#). To execute the Instant-Installation correctly, you will need a second computer and a portable disk or a network connection from which you can access the target computer.

The installation of O&O DiskRecovery is very easy. Please follow the steps below:

1. Start the computer on which you would like to have O&O DiskRecovery installed.
2. Sign in as an administrator or equivalent.
3. Start the O&O DiskRecovery installation file that you either downloaded from our server or received on one of our software CDs.
4. After the setup program has been successfully initialized, please follow the installation dialogue.
5. During the installation you can select, if you want run an [Instant-Installation](#) or a normal Installation.
6. Also, you can decide if you want to grant access to O&O DiskRecovery the current or all users.

**Note:** The Information contained in this chapter will not be relevant to you if you are using O&O DiskRecovery as part of the O&O RescueBox or O&O BlueCon. This version can be run directly from the CD on computers lacking operating systems. More information may be found in the O&O RescueBox/O&O BlueCon User's Guide of at <http://www.oo-software.com>

## Information about licensing

O&O DiskRecovery needs to be licensed for each computer, in other words, you need to acquire a license for each computer where you use O&O DiskRecovery. You are not allowed to transfer this license on another computer.

If you would like to implement O&O DiskRecovery in your company or as a technician for your customers, then please contact one of our resellers or our Sales Department.

### Trial version

If you do not enter a valid license key, you can use O&O DiskRecovery as test version. The test version allows you to search for lost files, yet it cannot restore them. Restoration is only available in the full version. Should you have any questions, please contact our Support Team.

## Enter license

In order to activate the product after installation or to gain access to the Full Version at a later time, you must possess a valid license key. This license key is also called a registration code, serial number, or product ID.

The dialogue for registration always appears automatically at the start to guide you if you are using an unregistered version or have entered the registration code incorrectly.

The registration wizard allows for a simple registration process. When you select the option Enter your Registration Code, a dialog box will appear where you can enter the registration code you received when purchasing the software. Please make sure that you do not confuse the digit "1" with "l" or enter any empty spaces where they don't belong when entering the license key.

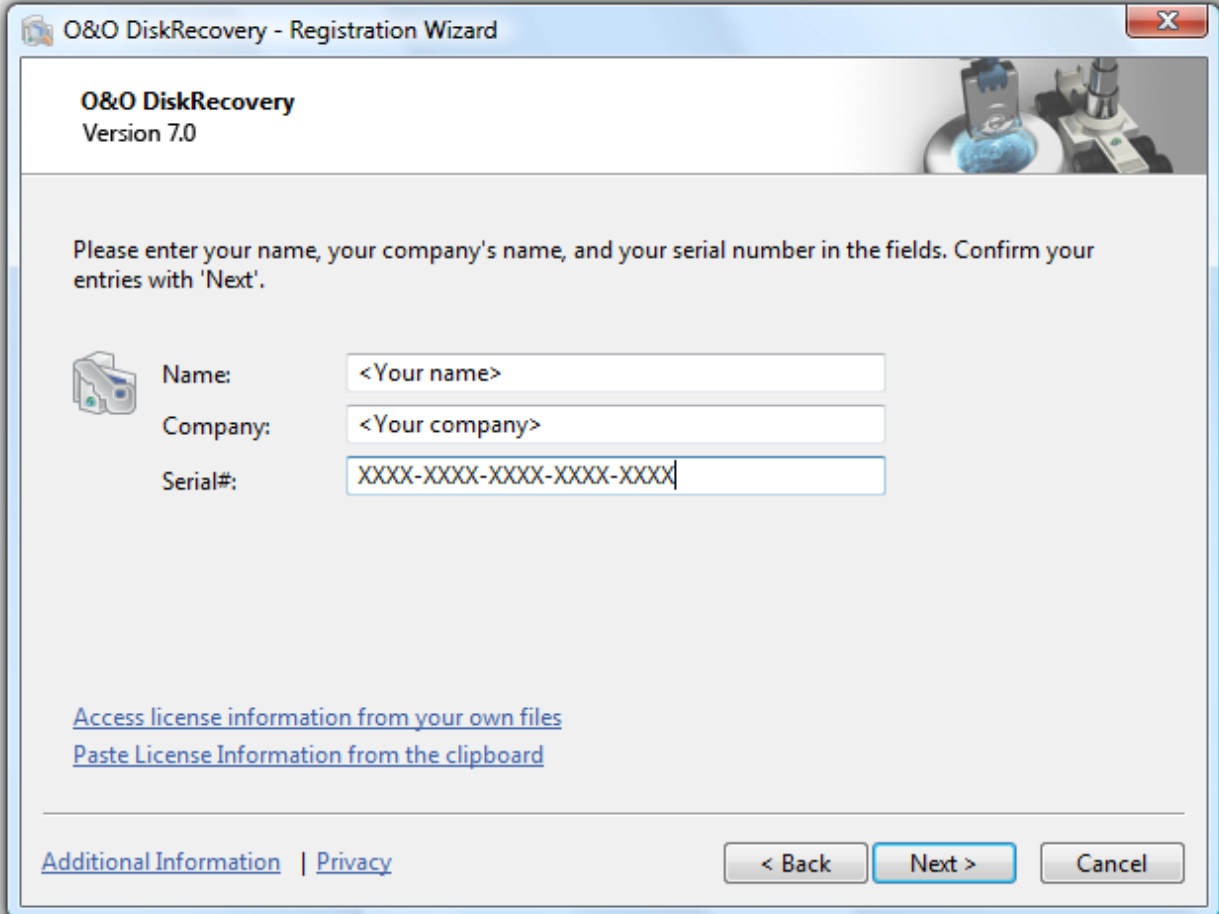
Press **Next** to save the registration data or **Cancel** to leave the dialog window without saving the data.

When you have correctly entered the license code you will receive confirmation in the dialog window.

## Installation

Should you run into any problems when entering your registration code, please contact our Support Team.

**Note:** If you do not enter a valid license key, you can use O&O DiskRecovery as test version. The test version allows you to search for lost files, yet it cannot restore them. Restoration is only available in the full version. Should you have any questions, please contact our Support Team.



O&O DiskRecovery - Registration Wizard

O&O DiskRecovery  
Version 7.0

Please enter your name, your company's name, and your serial number in the fields. Confirm your entries with 'Next'.

Name: <Your name>

Company: <Your company>

Serial#: XXXX-XXXX-XXXX-XXXX-XXXX

[Access license information from your own files](#)  
[Paste License Information from the clipboard](#)

[Additional Information](#) | [Privacy](#)

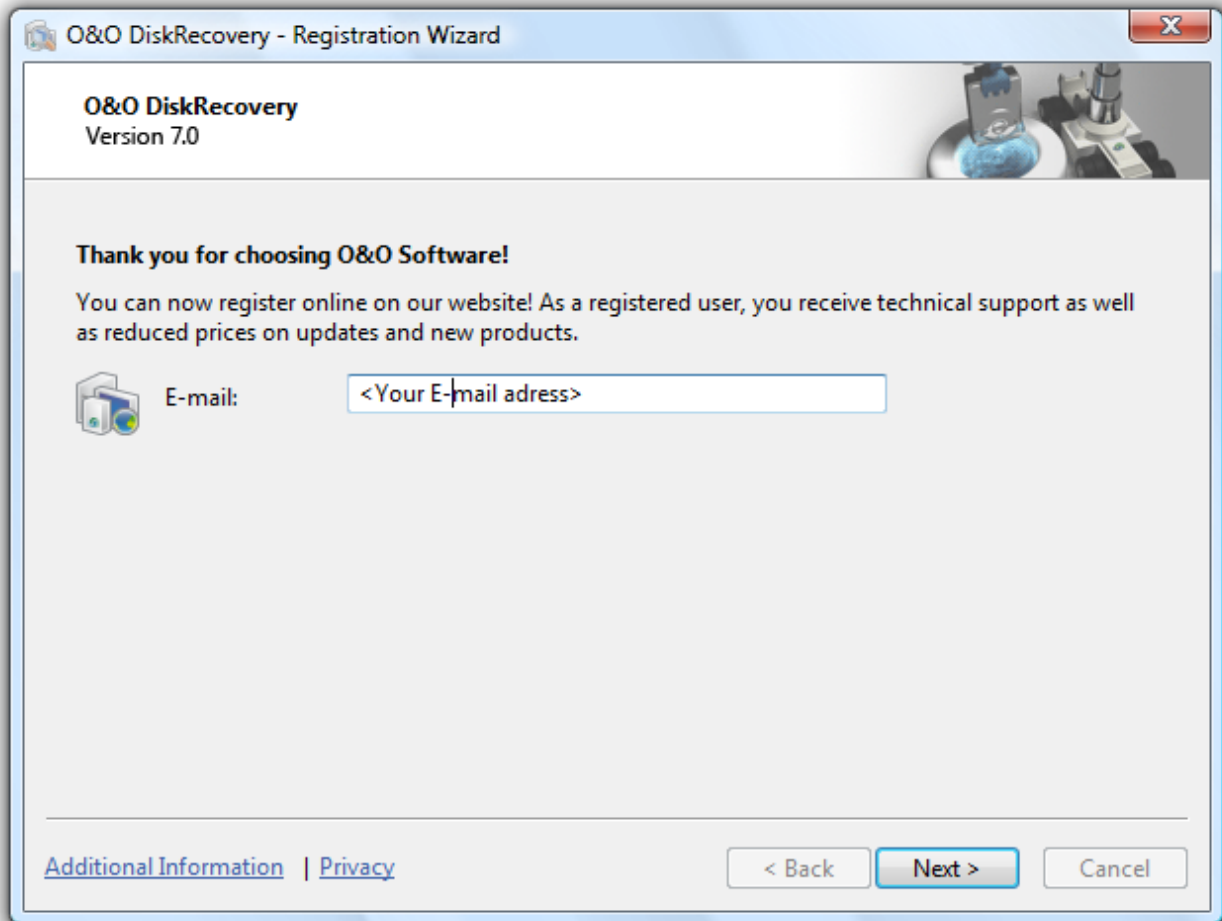
< Back   Next >   Cancel

Registration Wizard: Enter the License Key

## Online registration

To register O&O DiskRecovery online, you'll need the license key you received when you purchased the program.

To register online, start O&O DiskRecovery. The questions related to online registration always appear at the start, provided you haven't registered online.



### Online registration

#### What are the advantages of online registration?

Online registration gives you the benefit of having your customer data kept safely in our files, which means we can provide you with even better service. If, for example, you accidentally lose your license key, we can quickly resend it to you without any problem. The license key is needed for using the full version of a program, getting updates, and for reinstalling the program when you make a new setup of your computer.

Further advantages will let you:

- Be supplied with the latest information about our products
- Make free updates on new versions of purchased items (minor updates)
- Upgrade to a new version at a special discount price (major update)
- Obtain support from our customer service

## How do I register online?

If O&O DiskRecovery was purchased on our Online Shop, you've automatically registered with us. If O&O DiskRecovery purchased at a retailer, you will be asked if you want to register while entering the license information. You then have the option of either registering immediately or at another time. All you'll need is a functioning Internet connection and a valid license key.

You may also complete the registration form right here:

<http://www.oo-software.com/register>

Just return the completed online form by clicking "Send" and you'll be eligible to take full advantage of our O&O Customer Service.

## Uninstall

1. To remove O&O DiskRecovery from your system, open the Control Panel under the heading Settings in the Start Menu and click on **Add or Remove Programs**.
2. Please select **O&O DiskRecovery** from the list of installed software and click on **Remove**.
3. Confirm the uninstallation of O&O DiskRecovery. Once the uninstall process is complete you will receive a confirmation message, O&O DiskRecovery is now removed from your system.

## Updates for O&O DiskRecovery

If you want to update O&O DiskRecovery to a newer version, you will need a license key. Please follow the following directions:

1. Start the installation of O&O DiskRecovery.
2. Follow the normal O&O DiskRecovery-installation.
3. Once finished, the new version is fully installed.
4. If necessary, follow additional instructions.

## Quick Start

Connect the drive, from which you would like recover data, to your computer. It is necessary that your computer is running a compatible version of Windows.

1. Start O&O DiskRecovery from **Start/All Programs/O&O Software/O&O DiskRecovery**.
2. After the start you will get to the drive selection by clicking on **Continue**. Select the drive on which you would like to recover data and confirm by clicking on **Next**.
3. Confirm the initial data recovery settings on the next page by click on **Next**. After the following page, you can start the data recovery operation.
4. After the scan for deleted data has been completed you may now select from the list of folders and files the deleted files you would like to restore. With some file types (e.g. pictures) you can see the content of the file. This function is activated with preview.
5. Clicking **Next** will lead you to the selection of the target folder. In this folder your restored files will be saved.
6. In the next step the files will be restored. After this is complete, you will be able to view a status report of all actions taken up to this point. You can now close O&O DiskRecovery.

**Note:** Please make sure that there is sufficient disk space on your system and the target folder is not located on the drive where you would like to recover the deleted data.

**Regarding O&O RescueBox/O&O BlueCon:** It is possible to execute the data restoration directly from the bootable O&O RescueBox-CD or the O&O BlueCon-CD without needing a bootable Windows operating system! More information on this can be found in the O&O RescueBox/O&O BlueCon user's handbook or at <http://www.oo-software.com>

# Getting started

The following chapters will explain, how to rescue data with the successful installation of O&O DiskRecovery.

## More:

[Start O&O DiskRecovery](#)

[Select drive](#)

[Selection of the search technique](#)

[Filter for file types](#)

[Start search](#)

[Select files](#)

[Select target folder](#)

[Save files](#)

[Completing data rescue](#)

[Save and continue data rescue](#)

## Start O&O DiskRecovery

For this start O&O DiskRecovery either over the desktop link or under **Start/All Programs/O&O Software/O&O DiskRecovery**. You can also have online help displayed by clicking **Help** or pushing **F1**.

As soon as O&O DiskRecovery starts, it is possible to begin a new data recovery session or continue one you have saved. Clicking **Next** will take you to the Drive Selection dialog box. O&O DiskRecovery may be **Canceled** at any time.

### Loading a Saved Data Recovery

1. Select **Load a stored data rescue for continuance** and select the file with the data rescue. Such a file generally has the extension DRD.
2. The data recovery information will then be loaded. Then you will be able to continue with your data rescue. If the data volume on which you would like to recover data is not present on your system, an error message will appear.

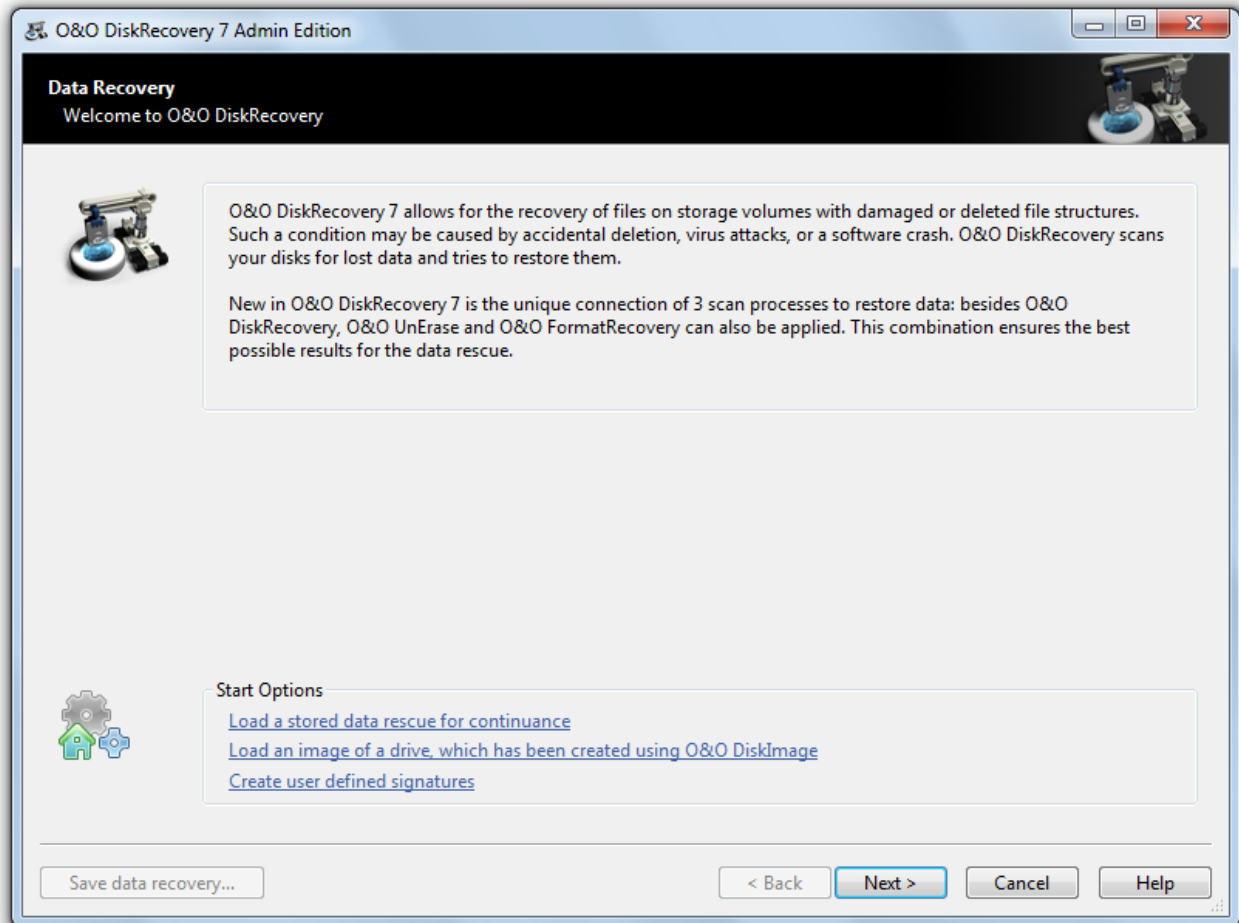
### Execute data rescue from an image

Our data imaging program O&O DiskImage can be used to create a direct forensic 1:1 image of the affected disk. This image (\*.omg) can be mounted as drive under Windows, and you can try to rescue your data with O&O DiskRecovery. The advantage is that the original disk will no longer be needed and thus can be used for other measures, such as sending it to a data rescue facility.

- Under **Load an image of a drive, which has been using O&O DiskImage** you can load a created image (\*.omg), and then run the data rescue from there.

## User defined file signatures

Some types of files are not supported by O&O DiskRecovery. However, if you would like to add your own file signature so that O&O DiskRecovery will detect such files during its scan, select **Create user defined signatures**. More on this can be found in the section entitled [Adding Your Own Signatures](#).



O&O DiskRecovery startup dialog box

## Selecting a drive

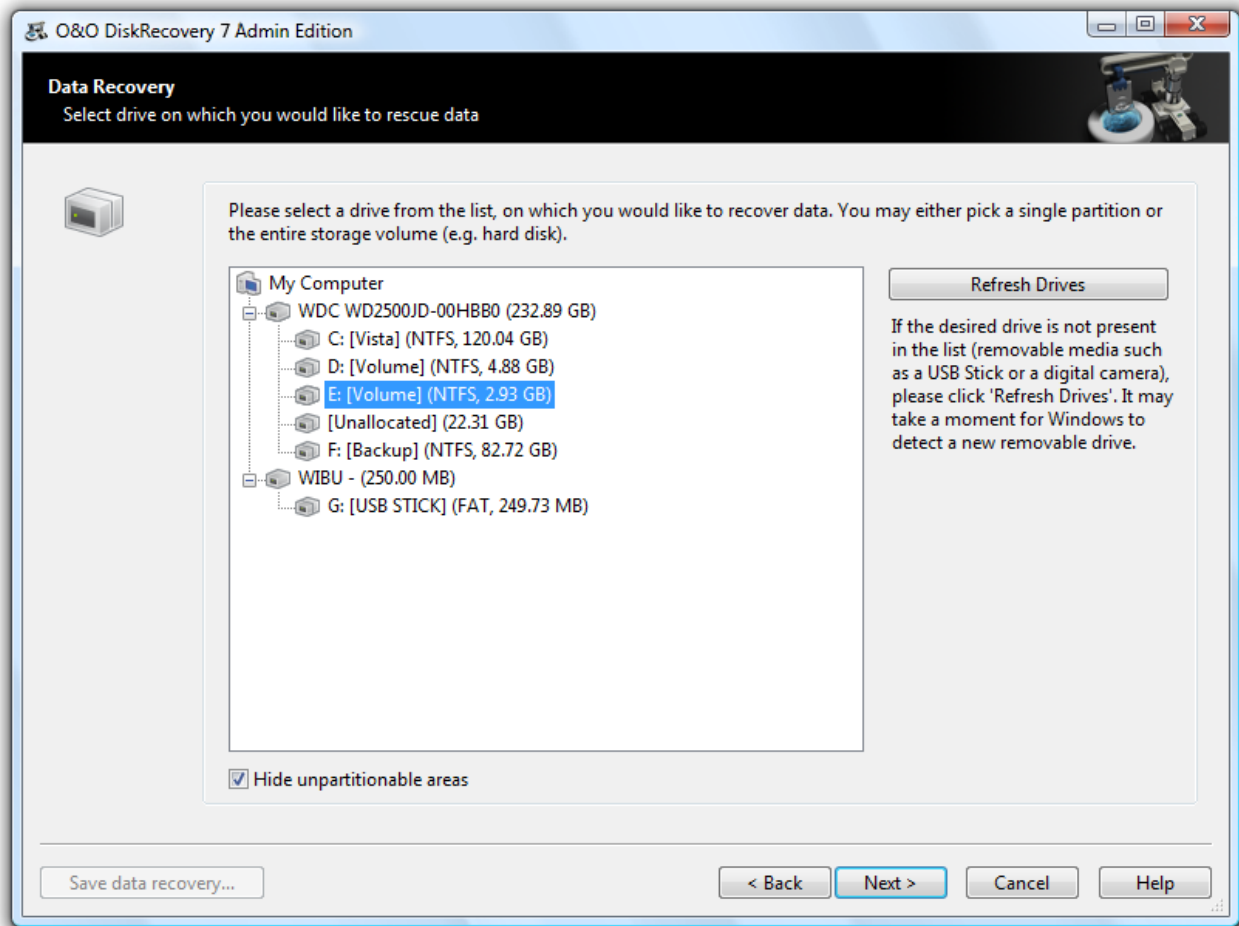
Select the drive, where you want to search for the deleted data. You can either select a partition (e.g. C: or D:) or an entire hard disk. You can also select as many storage volumes as you want, e.g. USB Sticks and Memory-Cards of digital cameras. Clicking Next will end the Drive Selection dialog.

As a standard, the areas which cannot be partitioned are hidden. Unselect **Hide unpartitionable areas**, if you want to make these areas visible.

Compared to the areas that cannot be partitioned there might also be areas, which are not partitioned. These areas are not available as partitions for Windows, but can be searched by O&O DiskRecovery. These areas are displayed in the partition list of a hard disk as RAW or "not allocated".

If you want to add drives after starting O&O DiskRecovery (e.g. USB Sticks or digital cameras), they will be displayed when you select update the drives. Then the drive list will be scanned once more and displayed.





Selecting a drive

## Selection of search process

O&O DiskRecovery offers various search techniques in combination. The search techniques employ different search techniques to rescue data, which optimally complement each other.

As a rule, all search techniques are activated. In the search for deleted files all will be used for any inquiry. Depending on the size of the disk, this could take some time.

Selecting individual search techniques e.g. only O&O UnErase, offers the advantage that the search for deleted files is faster. If you are missing files after the first search run, you can use another search technique.

**Note:** It is possible that not all scan processes will be fully run during a scan. This can be caused by the scan requiring an increased memory load. You'll notice this when, for example, a higher number of files are found, or one of the three scan processes results in no found data at all. To avoid this, you should run a new scan and when doing so, disable one of the scan processes. You should either run O&O UnErase and O&O FormatRecovery OR O&O UnErase and O&O DiskRecovery.

### O&O UnErase

The intelligent search algorithm enables a quick search run even through large hard disks. Even if some parts of your file have been overwritten with data, it is still possible to restore the other parts. Yet, it is also possible that not all deleted files are found.

### O&O FormatRecovery

Compared to O&O UnErase and O&O DiskRecovery, O&O FormatRecovery is able to restore data, of which folder and structure information is missing completely. The advanced functions of the special search algorithm of O&O FormatRecovery makes it possible to locate and ignore the defect sector. As a result, it is still possible to conduct a data rescue even if the disks is damaged.

### O&O DiskRecovery

The search algorithm of O&O DiskRecovery scans all sectors of the hard disk, the memory card or the USB Stick for lost files. Even formatted or destroyed file systems have a good chance of having data reconstructed. After completing a scan, it is possible to preview the files that can be restored. O&O DiskRecovery supports various picture and text formats in the preview function (among other things JPEG, BMP, TIF an many more).

It is sensible to use all of three search techniques for the data rescue. Here are a few typical application examples to illustrate the differences between the software programs.

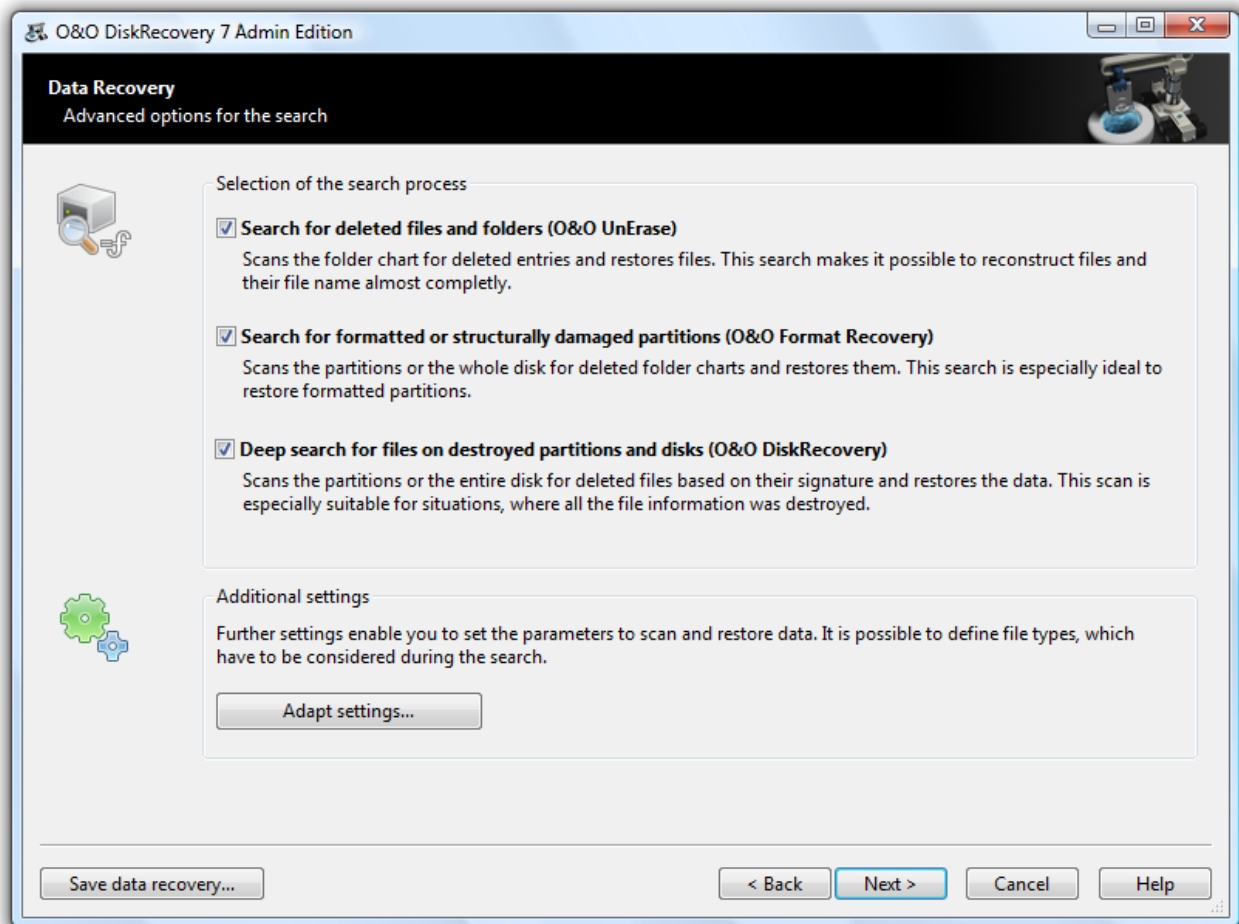
	O&O UnErase	O&O FormatRecovery	O&O DiskRecovery
Files were accidentally deleted from the Recycle bin.			
A drive was formatted.			
A virus or malicious software caused damage to some data and now some files or folders are missing.			
Windows announces the need to format the disk.			
The disk was formatted, the files were heavily fragmented.			
O&O UnErase did not produce the desired results.			
No file system is present on the drive.			
O&O FormatRecovery and O&O UnErase did not render the desired results.			

## Getting started

	O&O UnErase	O&O FormatRecovery	O&O DiskRecovery
A new operating system was accidentally installed.			✓

You can set further settings under **Adapt settings**.

**Note:** Please bear in mind that the search techniques used by O&O FormatRecovery on e.g. hard disks encrypted with BitLocker, cannot reconstruct data.



Select search technique

## Set up settings for the search

After drive selection you will be able to define the settings that will have a huge effect on the precision and length of the scan. In addition you can lay down a minimum length for text files. However, the default settings are generally sufficient for most cases and therefore probably do not need to be changed.

**Note:** If you have selected a device(hard disk, USB Stick etc.) and not a partition, you do not have the options O&O SmartScan and O&O RawScan at your disposal.

### Maximum Scan Depth for Recovering Data ([O&O DeepScan](#))

Runs an even more precise scan when rescuing data and increases the rate of success for the restoration of the original file size. Also, very small files can also be found this way. This can increase the duration of the scan.

### Ignoring Existing Files ([O&O SmartScan](#))

Enables a faster scan and avoids the restoration of existing files. You will save later tedious comparisons and sorting of already existing files.

### Leaving Out the File System During the Scan ([O&O RawScan](#))

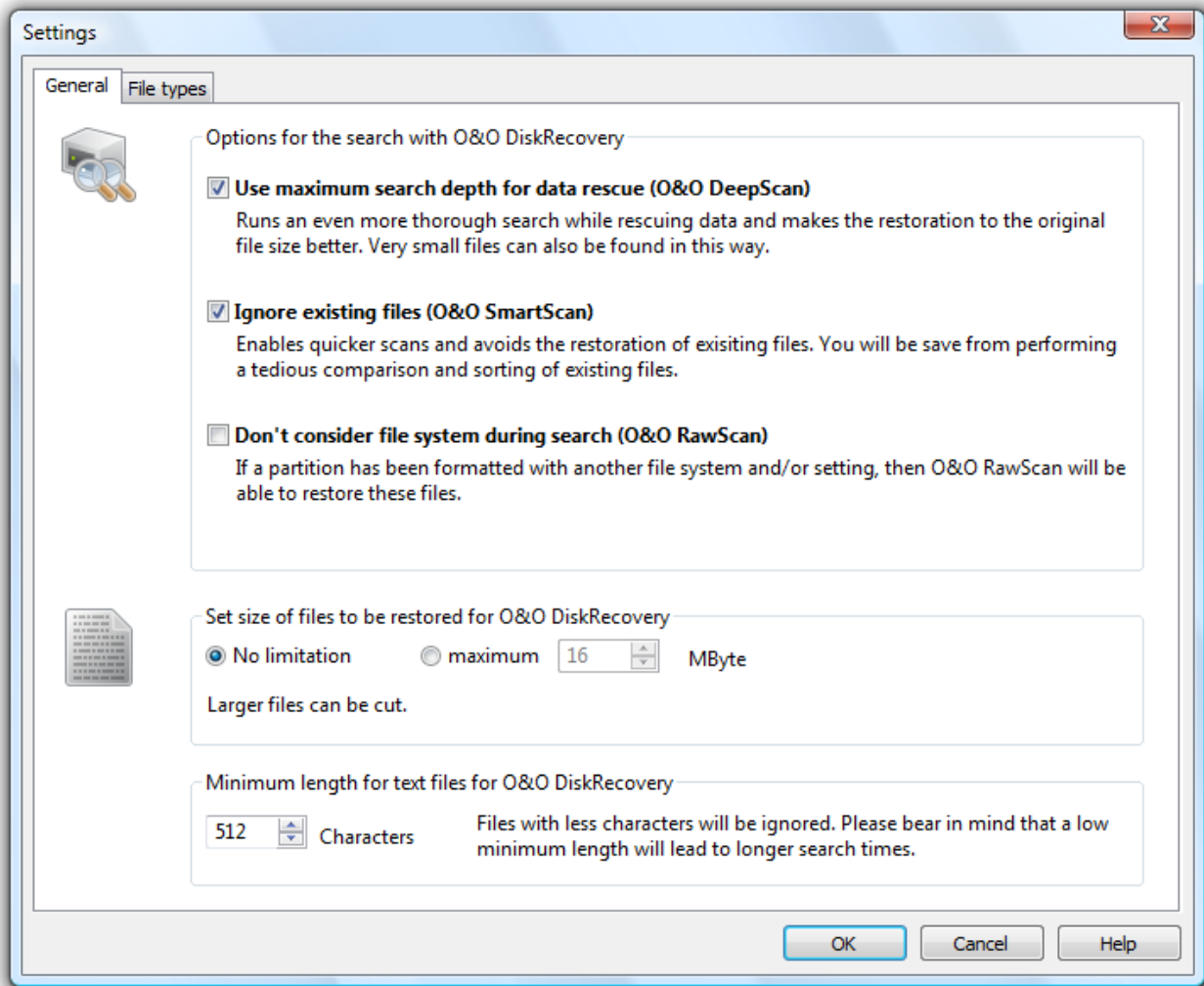
If the partitions, from which you want to restore data, was formatted, then the option O&O RawScan enables you to also restore these files. This can increase the duration of the scan.

### Specify size of files to be restored in O&O DiskRecovery

This function limits the scanning sequence to notice only files smaller than a set number of Megabytes. This maximum value can be set anywhere between 1 and 1024 MB. By default, all recoverable files, regardless of their size, are scanned. Using this function will conserve system resources and possibly accelerate the entire scanning operation.

### Minimum Length for text files

O&O DiskRecovery can recognize a number of different text files (HTML, source text files etc.). The default value of 512 characters means that all text files that consist of 512 characters or less will not be picked-up by the scan. If you would like to set this value lower, you can do so here. Minimum is a length of 16 symbols. The smaller the value, the longer the scan duration.



Defining the Scan Settings

## Filter for file types

It is possible to determine which types of files O&O DiskRecovery will scan for. By default all data types are considered. After the scan has been completed you will be able to select which files are to be restored. Because of this you may want to just leave the file type settings as they are. Clicking **Next** will initiate the data scan.

## File Types

In the file type dialog box you can define which file type will be considered in the scan and will not. With the Filter you can customize the display to only show specific **file type groups**. To do this, just adjust the column headings to meet your sorting needs.

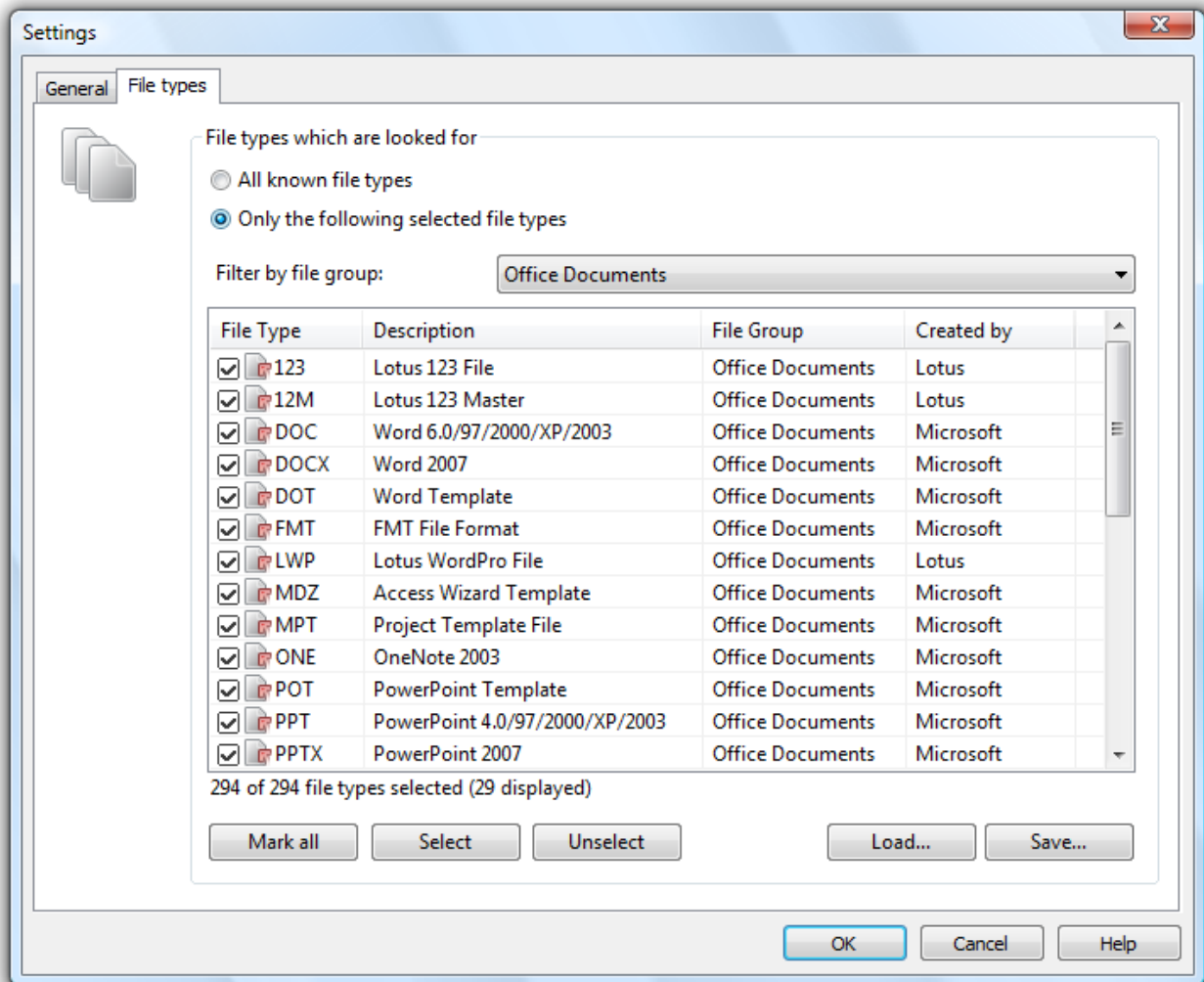
**Please note** that you must select at least one file type to continue with the scan.

## Load and Save

In order to secure a specific group of file types for future scans, simply save this particular scheme. Later you can use the load function to change or use it again.

## Selecting File Types

O&O DiskRecovery scans for all highlighted file types. All unselected file types are hidden. Normally, though, you can select all file types to be considered for the scan and filter those you do not want to recover after the scan result have been compiled.



File Types and Options

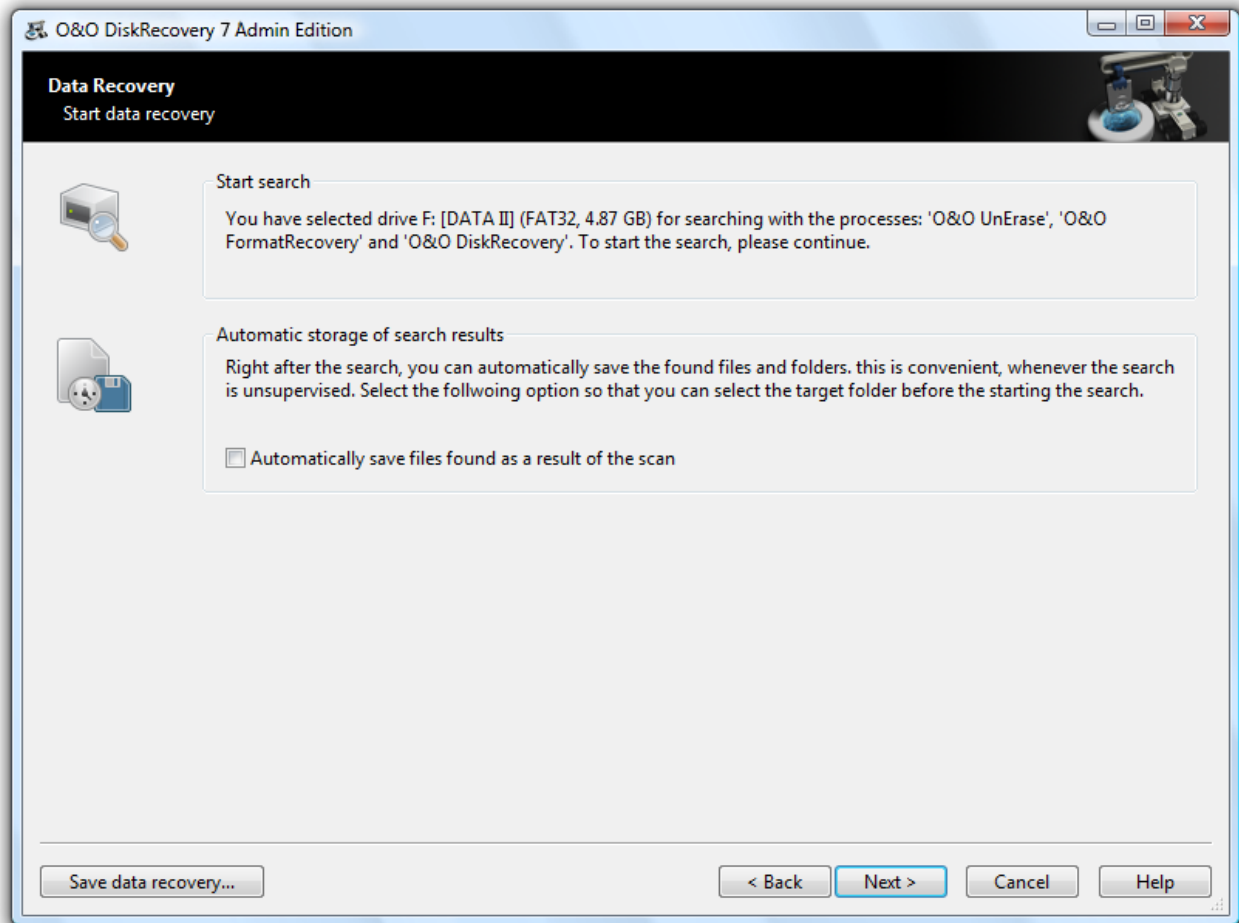
## Start search

- Click on **Next** to start the search for deleted files.

### Automatic saving of the search results

If you would like to execute an unsupervised scan, you can instruct O&O DiskRecovery to save all found files automatically after the scan and to finish the data rescue. This can save time. If you would like to select this option, your next step will be to define a target folder. Once this is completed, the scan will be initiated. More information on this can be found in the section entitled [Saving Files](#).

**Note:** This function is not available in the trial version and Personal Edition of the software.



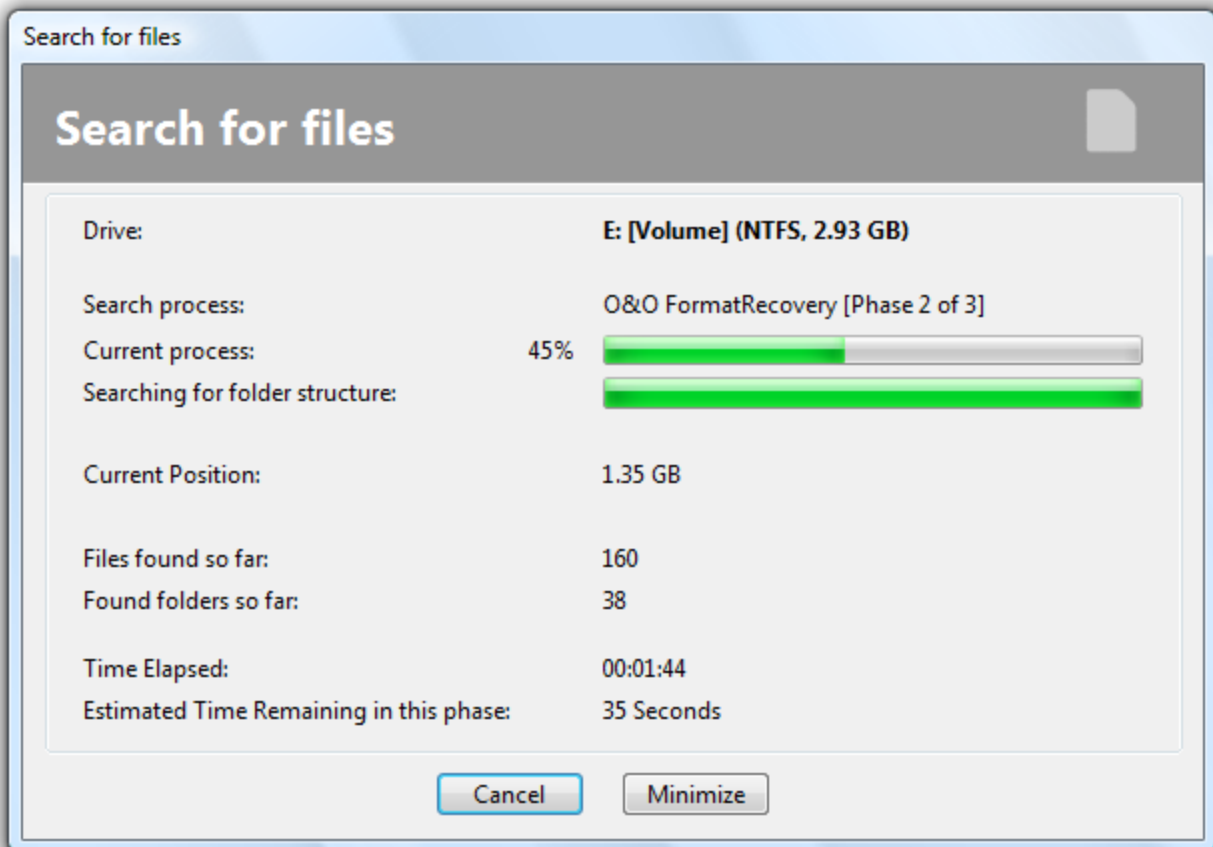
Start Search

## Run Search

During the scan you will receive information regarding the O&O DiskRecovery scan by way of a status dialog box. In it you will find the overall progress of the scan, the progress pertaining to a specific file, and the number of files found to this point.

The elapsed time, as well the estimated time remaining, can also be found here.

O&O DiskRecovery can be Minimized in to the System Tray. By clicking **Cancel**, you can stop the scan at any time. When the scan is interrupted you will be returned to the previous page of the assistant where you will be given the option of resuming the scan or running it again.



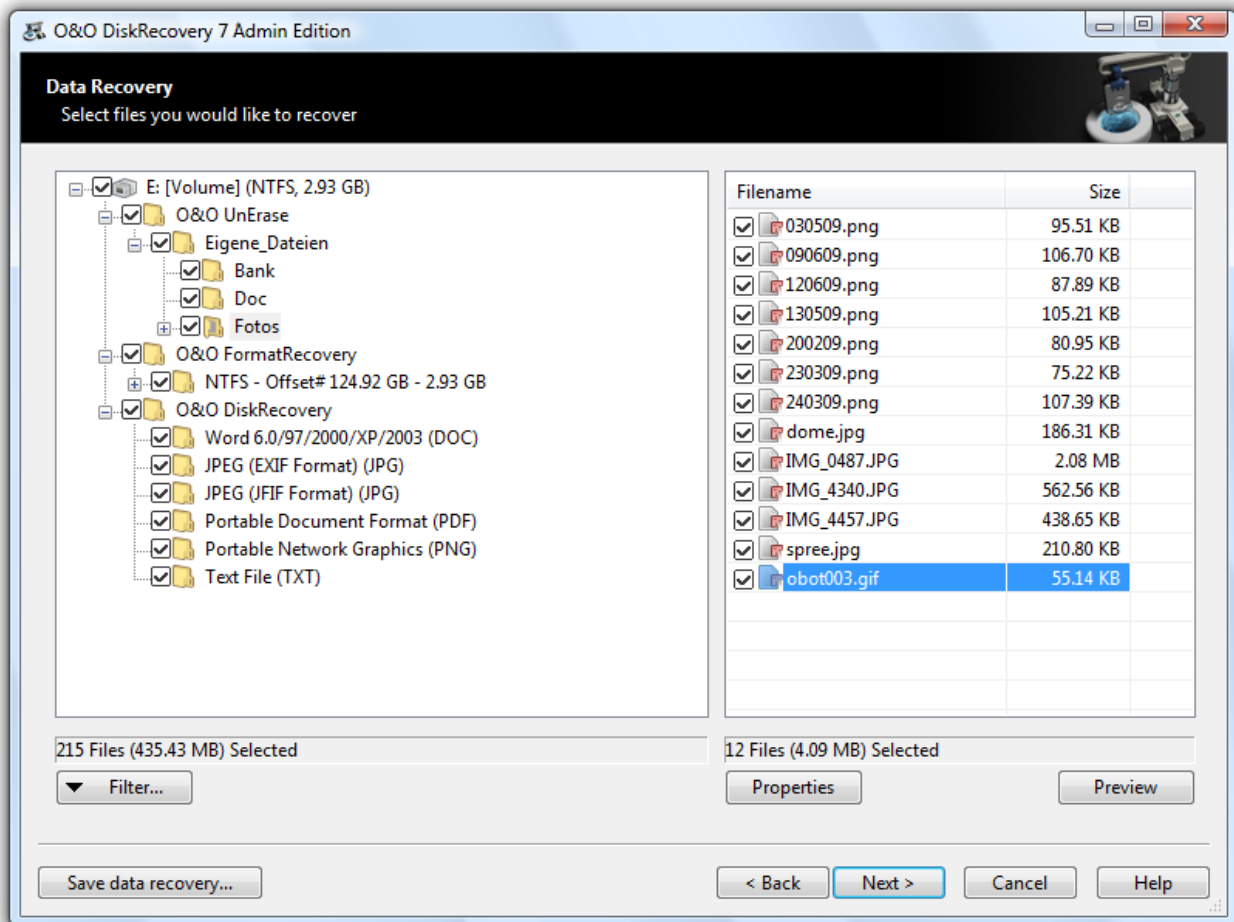
Search



## Select files to be restored

After the scan has been completed, the files found will be displayed in two lists; the list to the left displaying the types of files found, the one on the right showing the actual files of this type found. By selecting a specific file type on the left, the corresponding list on the right will change. Depending on which list is activated, the commands Select All, Select, and Unselect can be used.

When your selections are made, click on **Next** to continue to the next step.



Select files

**Note:** It is possible that not all scan processes will be fully run during a scan. This can be caused by the scan requiring an increased memory load. You'll notice this when, for example, a higher number of files are found, or one of the three scan processes results in no found data at all. To avoid this, you should run a new scan and when doing so, disable one of the scan processes. You should either run O&O UnErase and O&O FormatRecovery OR O&O UnErase and O&O DiskRecovery.

## Preview

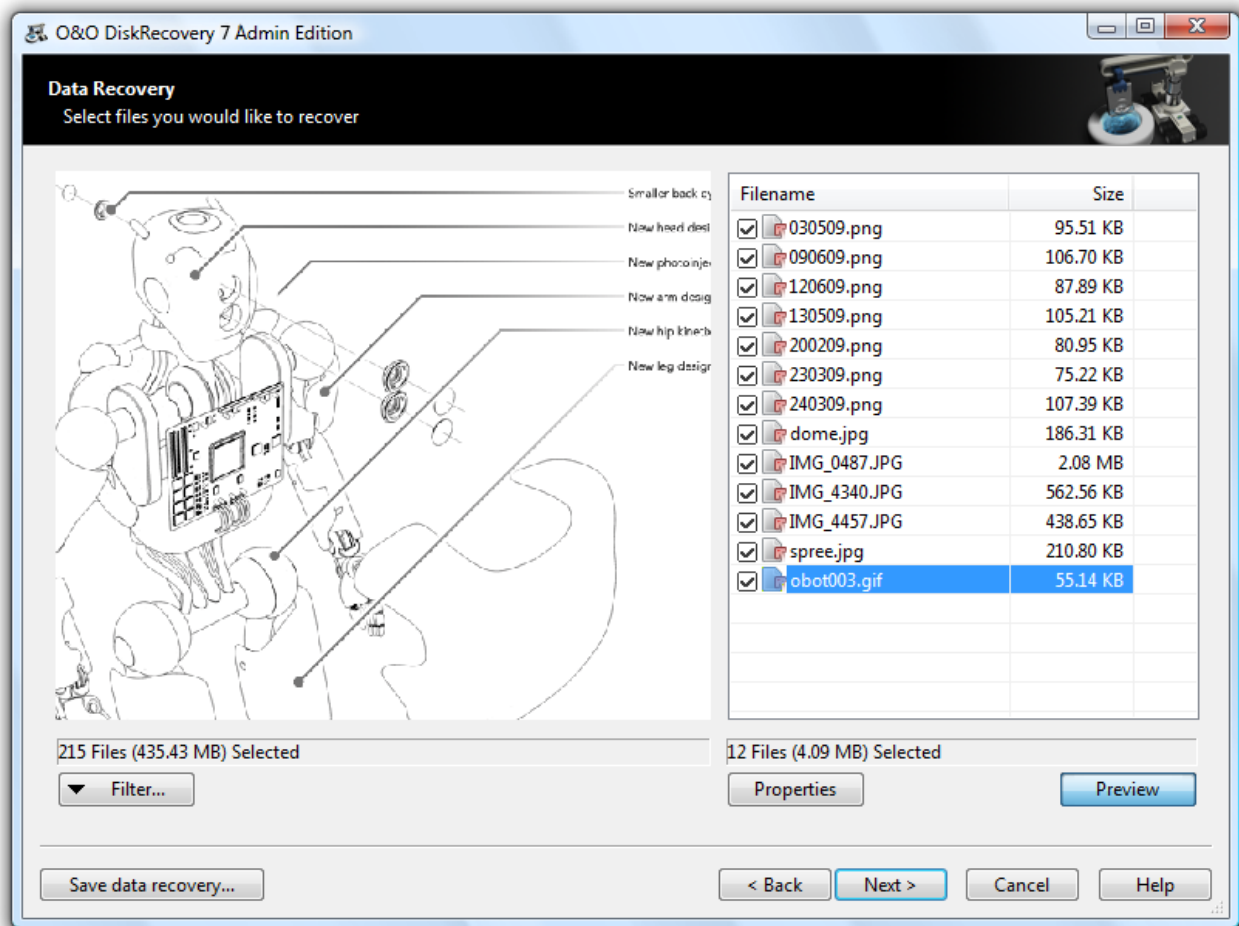
Many picture and text files can be immediately previewed without having been previously recovered.

To activate the preview select the file type group on the left and then click on Preview. If the button is grayed-out, these types of files cannot be previewed.

With the preview function active, click on the file you would like to preview.

- To **deactivate** the preview function, simply click the **Preview** button one time.
- **Filter/Select all files** marks all suitable files for restoration
- **Filter/Unselect all files** removes the selection.

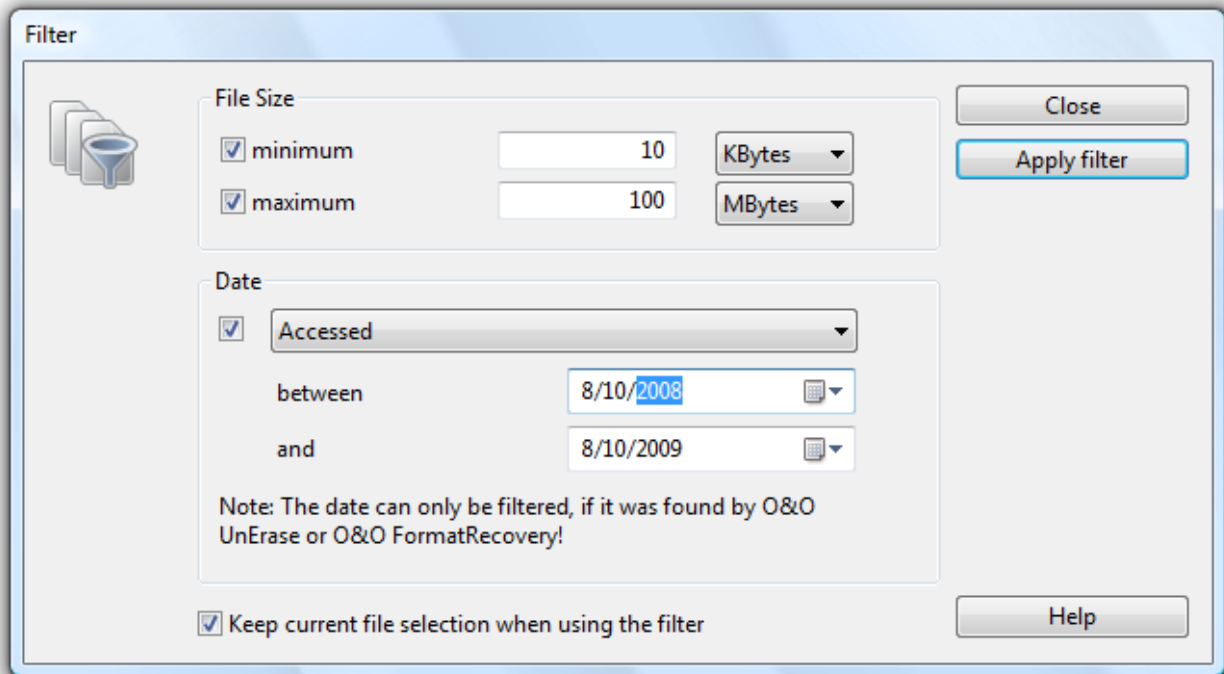
**Note:** The fact that a preview is not available for some files does not rule out the chance for a successful and flawless restoration of those files. This function should not be seen as a way to judge the quality of a pending restoration, but rather as a means to make the file identification process easier.



Preview function

## Filter

With the Filter option it is possible to include or exclude specific files from the list depending on their size. To do so, enter the size range in which the desired files should fall. You can also stipulate whether the filter should consider all files, only those previously selected, or only those you previously left unselected.



Applying a filter

## Select target folder

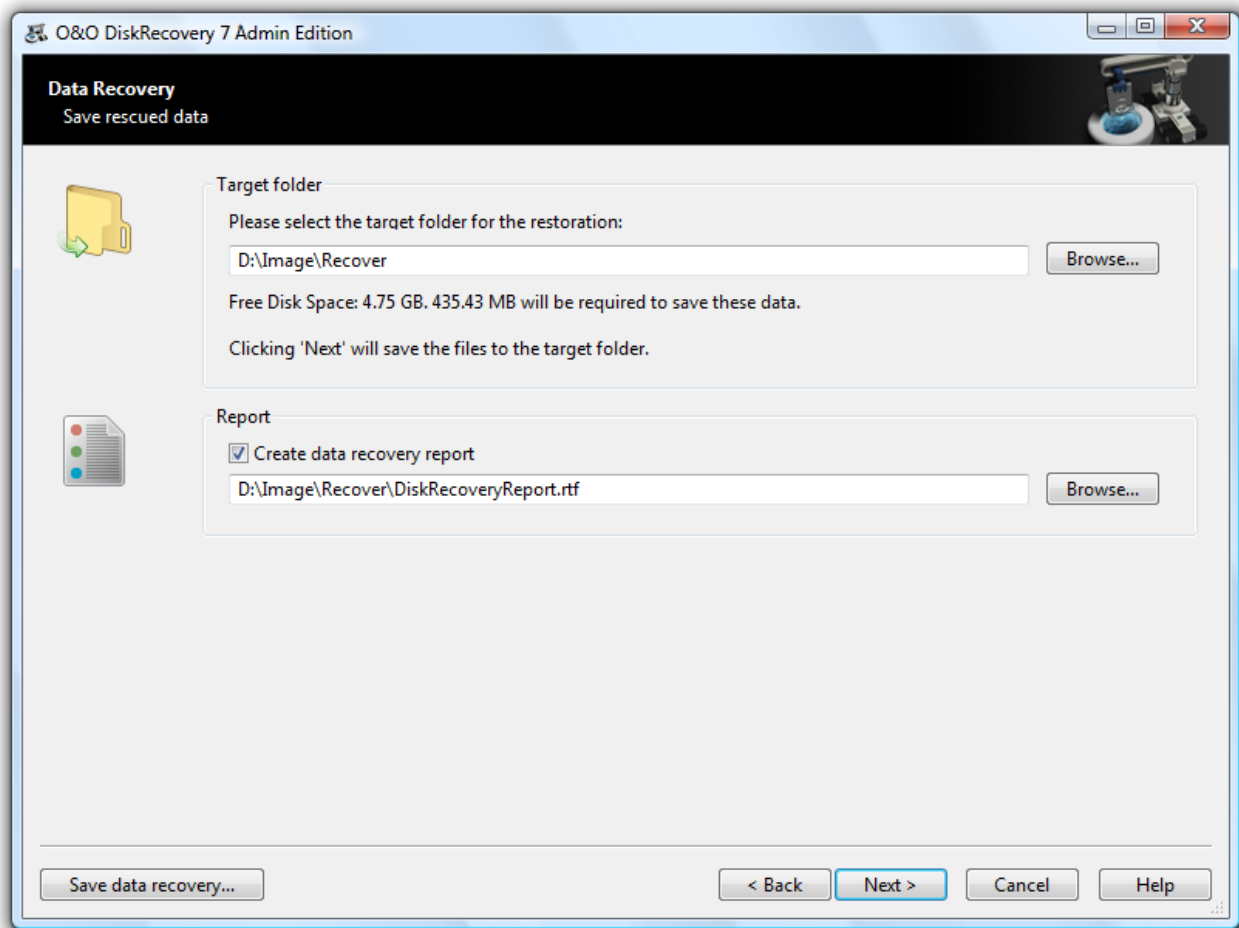
To recover selected files you need to enter a saving location. By default your 'My Documents' folder is set,

but any folder, including network folders, may be selected for this. O&O DiskRecovery automatically creates a subfolder into which the recovered files are saved. Because an individual subfolder is created for every file type recovered, it is advised that you select a target folder that is new or empty. In addition, it is possible to create a report regarding the completed data recovery.

- Enter the target folder for the data to be rescued. If it does not exist yet, it will be created automatically. Confirm the corresponding dialogue question.
- Click **Next** to initiate the recovery of data.

**Note:** Please bear in mind that the target folder cannot be located on the same partition from where the data is to be restored! Also do not forget to make sure you have enough storage capacity on disk to facilitate the newly recovered files. If you only have one partition (e.g. only "C:"), you will need an external disks to save the data to be restored, e.g. USB Stick.

## Getting started



Select target folder for the data rescue

## Creating a Report

Activating this option will enable you to view a detailed report regarding the completed data recovery session. You can have this report saved to a different target folder as that in which the recovered files are to be saved. As a standard it will be created with the name "DiskRecoveryReport.rtf" in the target folder.

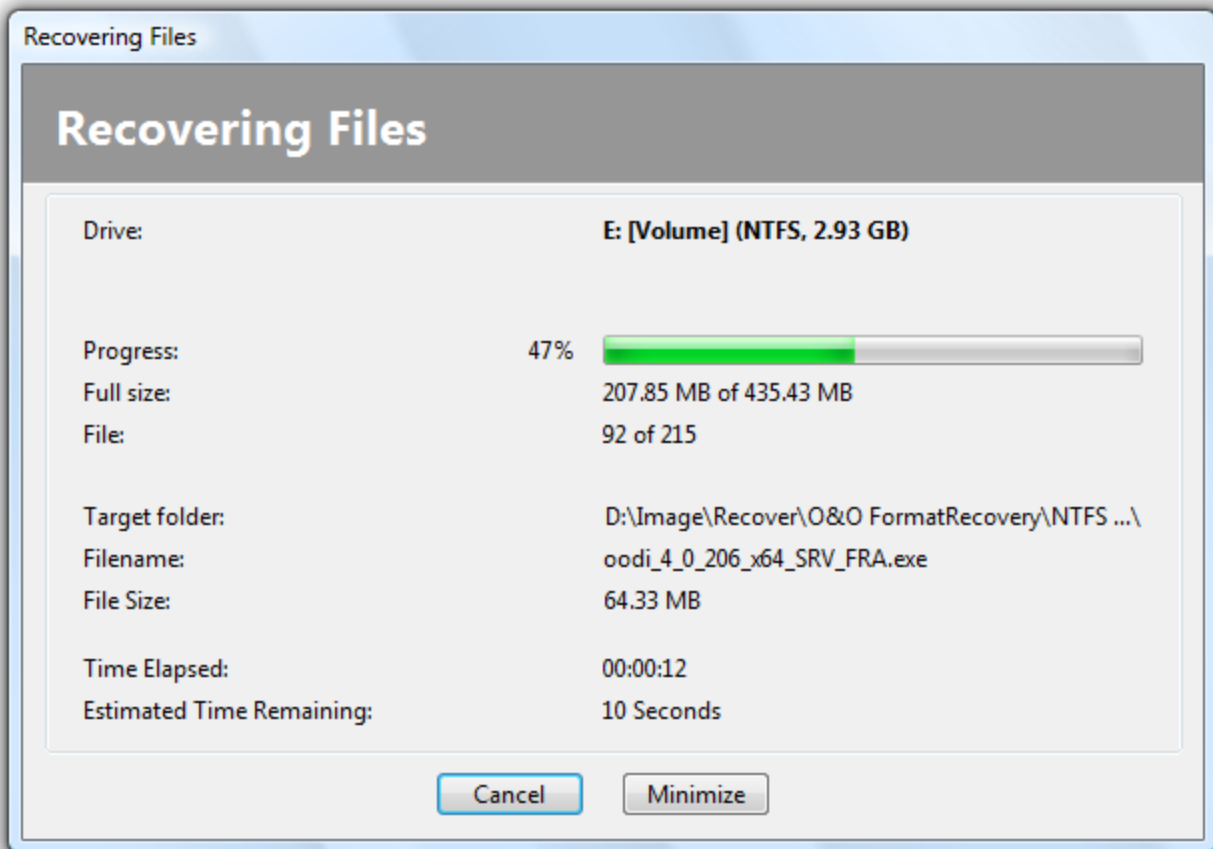
The reports are saved in Rich Text Format (RTF) and can be viewed and printed with the help of applications such as WordPad, Microsoft Word, or any other text editing programs.

## Saving Files

While the recovered files are being saved to their target folder, O&O DiskRecovery keeps you up-to-date by way of a convenient dialog box. Information, such as overall progress and the total size of the saved files, is displayed in real-time as the operation progresses.

The elapsed time, as well the estimated time remaining, can also be found here.

O&O DiskRecovery can be Minimized in to the System Tray. Pressing Cancel will interrupt the saving operation. When the operation is interrupted you will be returned to the previous page of the assistant where you will be given the option of changing the target directory and reselect the files to be recovered. Please note that all files that have already been successfully saved will be unselected so that you can continue to save files where you left off.

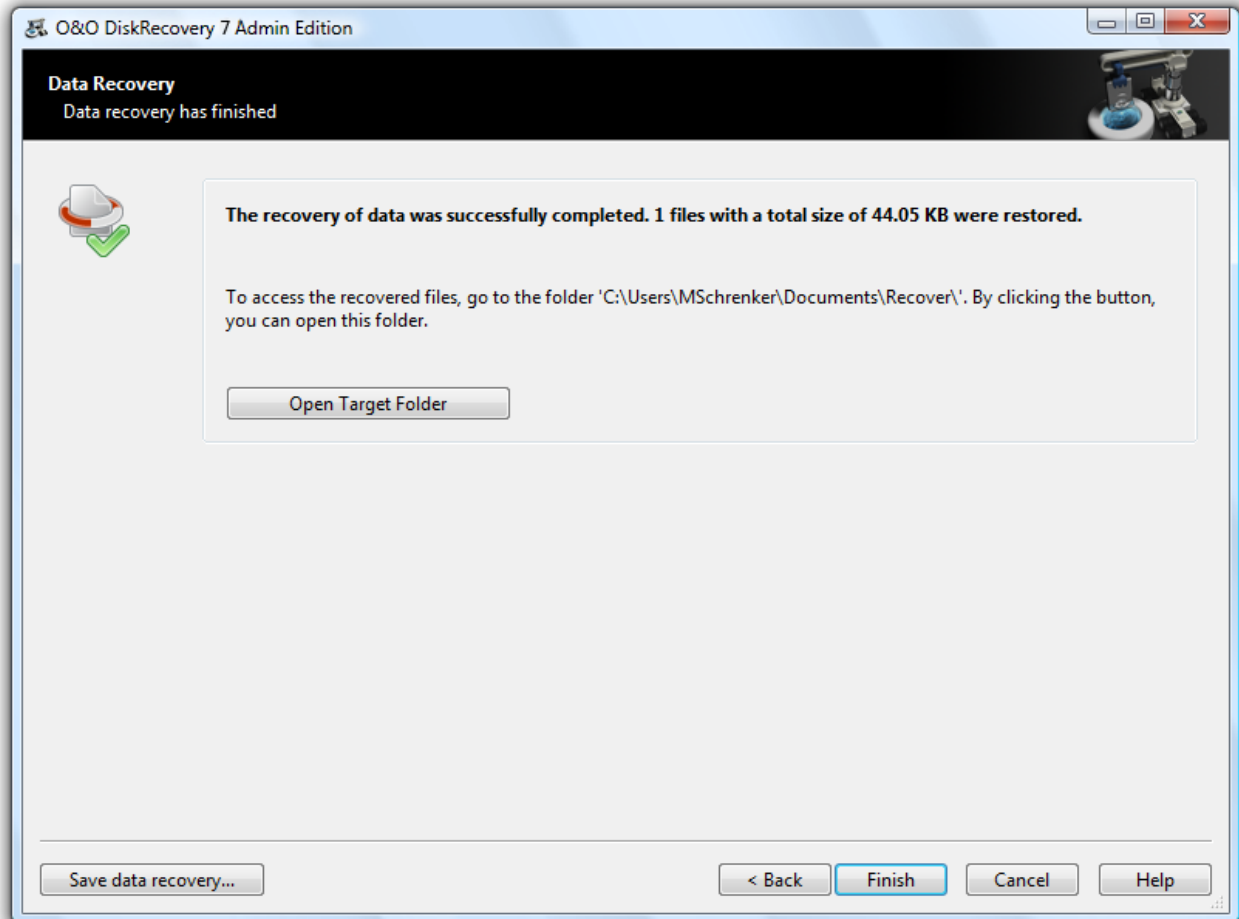


Data Recovery Progress

## Completing the Data Recovery

After the successful recovery of files is completed, a summary of the data recovery will appear. From here you can Open Target Folder and immediately access the restored files.

By clicking **Finish** O&O DiskRecovery will be closed.



Completing the Data Recovery

## Saving a Data Recovery and continuing it later

At any time you can interrupt the data recovery operation and continue it at a later time. In the bottom-left-hand corner of the Assistant you will find a button entitled Save Data Recovery. This will open a dialog box that will allow you to save the current data recovery.

After the data recovery is successfully saved, it will be possible to load it after O&O DiskRecovery is restarted at a later time. More information on this can be found in the section entitled "[Starting O&O DiskRecovery](#)".

Please note that the save function is only available when you have made changes to the default data recovery settings.

## File types and signatures

O&O DiskRecovery can recognize over 300 different versions of file types. A complete list of these file types can be found in the section entitled [List of Supported file types](#).

Moreover, you have the ability of adding your own signatures. O&O DiskRecovery can use these user-defined signatures for its scan.

If you notice an important file type is missing from the current list and should be included, please give us three examples of this file type with a short explanation and send them to [support@oo-software.com](mailto:support@oo-software.com). We will then incorporate this file type into the new version of O&O DiskRecovery. Please note that we are not liable for any data sent to us. If you have any questions regarding this, please feel free to contact our Technical Support.

## Adding Your Own Signatures

After starting O&O DiskRecovery you can open the dialog box to add your own user-defined signature.

After the dialog box appears, please enter the File Extension for the new signature (e.g. DOC for a Word document). In the Short Description, you may enter a small narrative regarding this file type.

The Start Position defines the offset of the signature calculated from the beginning of the file. For instance, if the signature is to begin from the third character, then enter a 3 here. Otherwise, enter 0 when the signature is to stand at the beginning of the file.

The use of place holders is also a possibility while defining a signature. A place holder stands for any user-defined character in the signature. For this, you need to activate **Use Place holders**. Afterwards you can define "?", "\*", or any other character as your place holder.

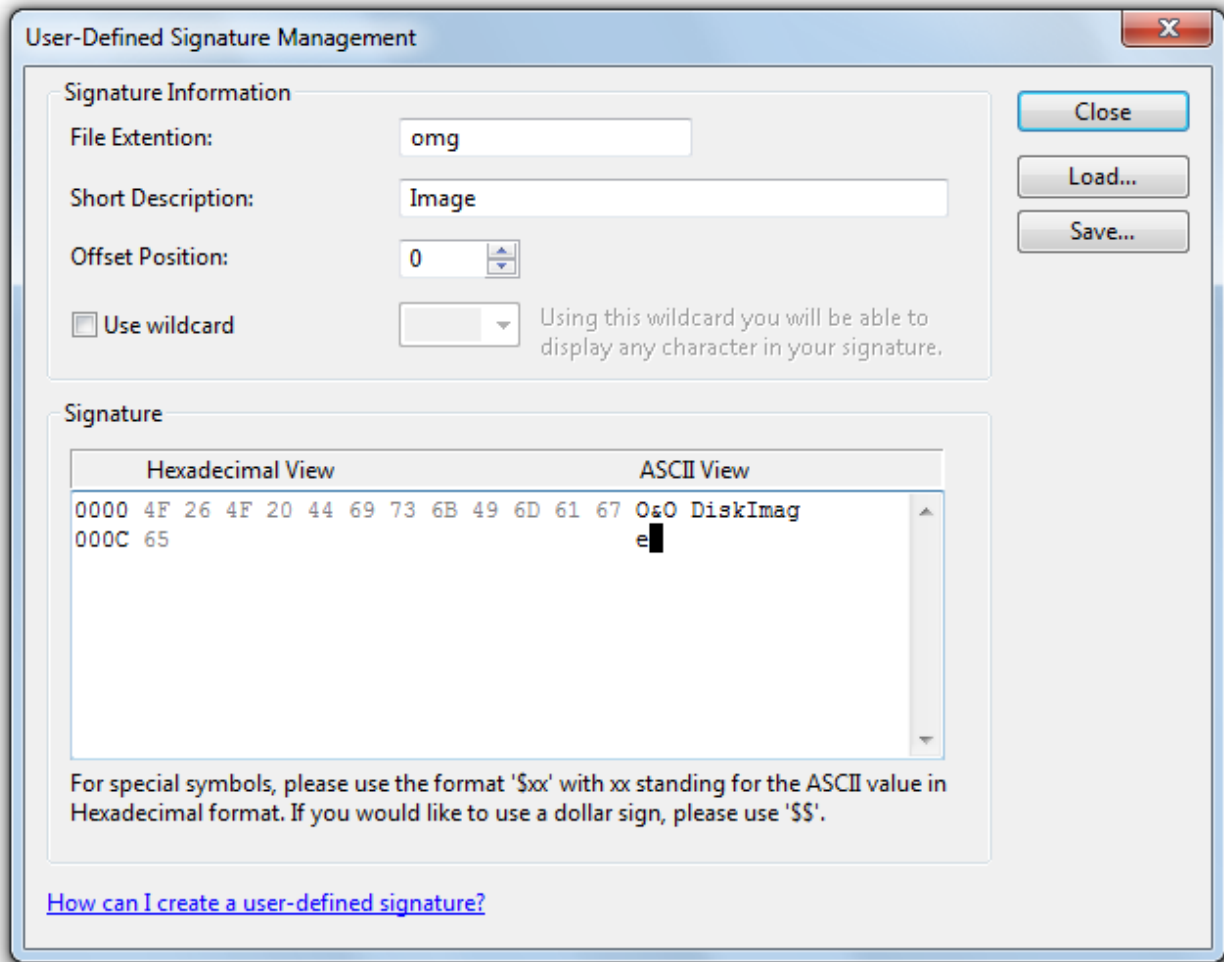
In the field labeled Signature you can enter the distinct character chain that is used to identify the file type. This can be entered using any ASCII characters. If you would like to enter a special character that can not be expressed through normal text, enter a dollar sign instead. Following the Dollar sign enter a two-digit Hex value in place of the character. For example, if you would like to add a line break (Carriage Return corresponding to ASCII Code 13), then you would have to enter '\$0D'. Entering a '\$\$' will produce an actual Dollar sign.

It is also possible to enter Hexadecimal Values. For non-displayable characters it is recommend using only Hexadecimal values.

After you have finished entering the signature, it is necessary that you save it. Please note that all user-defined signatures must be saved either to the O&O DiskRecovery program folder or to your 'My Documents' folder for them to be found and loaded when the program starts.

If you would like to change a signature already created and incorporated into O&O DiskRecovery, simply load the desired signature and save it again with the desired changes.

**Tip:** Detailed information on how to create signatures are available on our [Website](#).



Entering of User-Defined Signatures

## Automatically Loading Signatures

When O&O DiskRecovery opens, it automatically loads all user-defined signatures and adds them to its overall list of file types. Please note that all user-defined signatures must be located in either the O&O DiskRecovery program folder or in the 'My Documents' folder for the program to be able to successfully detect and load them.

If you have your own signature with an extension that either already exists in the master list of file signatures or has already been loaded in the past, it will not be loaded again and an error message will inform you of this.




## List of Supported File Types

File extensions	Description	Publisher	File group	Preview available
123	Lotus 123 File	Lotus	Office Document	
12M	Lotus 123 Master	Lotus	Office Document	
3DA	Crystal Reports File	Crystal Decisions	Document	
3TF	Crystal Reports File	Crystal Decisions	Document	
3WS	Crystal Reports File	Crystal Decisions	Document	
ACCDB	Access 2007	Microsoft	Data base	
ACE	ACE File	e-Merge	Archive	
ACM	Windows System File	Microsoft	Application	
ACP	Arcon Project File	TriCAD	Miscellaneous	
ADP	Access Project	Microsoft	Data base	
ADT	Fax File Format	AdTech	Application	
AFM	Adobe Font Metrics	Adobe	Application	
AI	Adobe Illustrator Format	Adobe	Graphic	
AIF	QuickTime File	Apple	Movies	
AM	Sound File Format		Audio	
ANI	Animated Pointer	Microsoft	Graphic	
API	Acrobat Plug-In	Adobe	Application	
ARJ	ARJ Archive Format	ARC Software Inc.	Archive	
ASF	Advanced Streaming Format	Microsoft	Movies	
ASMX	ASP.NET Webservice Source	Microsoft	Application	

## File types and signatures

AU	Sound Player File	Sun Microsystems	Audio	
AVI	Audio Video Interlaced File	Microsoft	Movies	
AW	Answer Wizard File	Microsoft	Application	
AX	Windows System File	Microsoft	Application	
BIN	Binary File Format	Microsoft	Application	
BKF	WindowsXP Backup Utility Backup Set	Microsoft	Application	
BLD	3D Home Architect	3D Home	Graphic	
BMP	Windows Bitmap	Microsoft	Graphic	
BOO	FrameMaker Format	Adobe	Graphic	
BQY	BrioQuery File	Brio Technology	Data base	
BRK	BRK File Format	Adobe	General	
BTR	Btrieve Database File	Pervasive Software	Data base	
CAB	Windows Cabinet Archive	Microsoft	Archive	
CAL	CAL File Format		General	
CAP	Concept16 Database File	Vectorsoft	Data base	
CDR	Corel Draw 8/9/10/11/12/X3	Corel	Graphic	
CDT	Corel Draw Template File	Corel	Graphic	
CHM	Compiled Help File Format	Microsoft	Application	
CHQ	Help Combined Full-text Search File	Microsoft	Application	

## File types and signatures

CIFF	CIFF Format	Canon	Digital camera RAW-Format	
CLA	Java Class File	Sun Microsystems	Document	
CLP	Windows Clipboard Format	Microsoft	Graphic	
CLS	JavaScript Class	Sun	Document	
CLY	ACT!Layout	Best Software CRM Division	Document	
CMX	Corel Clipart	Corel	Graphic	
CNT	Windows Help File Content	Microsoft	Application	
CNV	Text Converter File	Microsoft	Application	
CONT	Contax Raw Format	Contax	Digital camera RAW-Format	
CPI	International Code Page	Microsoft	Application	
CPL	Control Panel File	Microsoft	Application	
CPP	C/C++ Source Code File		Text	
CPT	Photo-Paint Image	Corel	Graphic	
CR2	CR2 Format	Canon	Digital camera RAW-Format	
CTM	CTM File Format	CTM Development	General	
CUE	CUE File Format		General	
CUR	Cursor File Format	Microsoft	Graphic	
DB	Paradox Database	Borland	Data base	
DBX	Outlook Express E-mail Folder	Microsoft	Mail	
DBx	Microsoft Picture Catalog	Microsoft	Graphic	

## File types and signatures

DCM	DICOM Medical Imaging Data		Graphic
DCR	Shockwave Director File	Macromedia	Graphic
DIB	Device-Independent Bitmap graphics	Microsoft	Graphic
DIT	Windows Active Directory Schema	Microsoft	Application
DLL	Dynamic Link Library	Microsoft	Application
DOC	Word 6.0/97/2000/XP/2003	Microsoft	Office Document
DOCX	Word 2007	Microsoft	Office Document
DOT	Word Template	Microsoft	Office Document
DRD	O&O DiskRecovery Data File	O&O Software	Application
DRF	O&O DiskRecovery File-type File	O&O Software	Application
DRS	O&O DiskRecovery Signature File	O&O Software	Application
DRV	Windows System Driver	Microsoft	Application
DRW	Micrografx Designer Format	Micrografx	Graphic
DSC	Rollei Raw Format	Rollei	Digital camera RAW-Format
DSG	EOD File	Sierra	Miscellaneous
DSN	ODBC Datasource File	Microsoft	Data base
DUN	DUN File Format	Microsoft	Application
DWG	AutoCAD File Format	Autodesk	Graphic

## File types and signatures

DXR	Protected Movie File	Macromedia	Movies	
ECF	Extension Configuration File	Microsoft	Application	
EDB	Exchange Server Database	Microsoft	Data base	
ELM	FrontPage Theme-Pack File	Microsoft	Internet/Web	
EMF	Windows Enhanced Meta File	Microsoft	Graphic	
EPS	Encapsulated Postscript	Adobe	Document	
ETP	Visual Studio .NET Enterprise Template Project	Microsoft	Document	
EXE	Executable File	Microsoft	Application	
FAE	FAE File Format	Microsoft	General	
FDB	Firebird Database File	Firebird	Data base	
FH8	Freehand File Format	Macromedia	Graphic	
FLA	Flash Movie Authoring File	Macromedia	Movies	
FLC	Autodesk Animator File	Autodesk	Graphic	
FLT	FLT File Format	Autodesk	General	
FMT	FMT File Format	Microsoft	Office Document	
FON	Font File	Microsoft	Application	
FOV	Foveon Raw Format	Foveon	Digital camera RAW-Format	
FP5	Filemaker Pro	Filemaker Inc.	Data base	
FPX	FlashPix Format	Kodak	Graphic	
FRT	FoxPro File	Microsoft	Data base	

## File types and signatures

FUJI	Fujifilm Raw Format	Fujifilm	Digital camera RAW-Format	
GIF	GIF 87a/89a	Compuserve	Graphic	
GLY	ACT!Layout	Best Software CRM Division	Application	
GMT	ACT!Email Template	Best Software CRM Division	Application	
GZ	gzip Archive (Unix)	gzip Org	Archive	
HHC	Help File Content	Microsoft	Application	
HHP	Help Project File	Microsoft	Application	
HLP	Windows Help File	Microsoft	Application	
HLX	ATI Radeon Video Driver Support File	ATI	Application	
HQX	BinHex Compressed File	Apple	Application	
HRB	HRB File		Miscellaneous	
HTM	Hypertext Markup Language	World Wide Web Consortium	Internet/Web	
HXI	Help 2 Compiled Help File	Microsoft	Application	
H XK	Help 2 Keyword Index	Microsoft	Application	
HXS	Help 2 Compiled Help File	Microsoft	Application	
HXW	HXW File Format	Microsoft	General	
ICC	ICC Profile Format File		Application	
ICM	Image Color Matching File	Apple	Application	
ICO	Windows Icon File	Microsoft	Graphic	

## File types and signatures

IFF	Deluxe Paint Image	Electronic Arts	Graphic	
IME	Global Input Method Editor	Microsoft	Application	
IMG	GEM Paint	Digital Research, Inc.	Graphic	
IND	Full-Text Search Index File	Microsoft	Application	
INDD	InDesign	Adobe	Graphic	
ISU	Uninstall Script File	Microsoft	Application	
ITS	International Translation File	Microsoft	Application	
JP2	JPEG 2000 File	Joint Photographic Experts Group	Graphic	
JPG	JPEG (EXIF Format)	Joint Photographic Experts Group	Graphic	
JPG	JPEG (JFIF Format)	Joint Photographic Experts Group	Graphic	
JPO	unknown		Miscellaneous	
KRYPTER	Krypter 2000	Krypter	Archive	
LBL	Label file - dBASE IV/Clipper 5/dBFAST	Ashton Tate	Application	
LBM	DeluxePaint Bitmap	Electronic Arts	Graphic	
LDF	SQL Server Transaction Log File	Microsoft	Data base	
LIB	Static Link Library	Microsoft	Application	
LNK	Windows Shortcut File	Microsoft	Application	
LWP	Lotus WordPro File	Lotus	Office Document	
LXA	Office Speech Lexicon File	Microsoft	Application	

## File types and signatures



LZH	SFX Archiver Format	APN Computing	Archive
M4A	MPEG-4 Audio Layer	Moving Pictures Experts Group	Audio
MB	Paradox Database	Borland	Data base
MCD	MathCad File	MathSoft	Document
MDB	Access 97/2000/XP/2003	Microsoft	Data base
MDF	SQL Server Master Database File	Microsoft	Data base
MDZ	Access Wizard Template	Microsoft	Office Document
MFL	MFL File Format	Mozilla	General
MID	MIDI File Format	Microsoft	Audio
MINO	Minolta Raw Format	Minolta	Digital camera RAW-Format
MMAS	MMAS File Format		General
MMAT	MMAT File Format		General
MMMP	MMMP File Format		General
MNY	Microsoft Money Format	Microsoft	Data base
MOD	CAD File	Dassault Systèmes	Graphic
MOV	Quicktime Movie Format	Apple	Movies
MP3	MPEG 1.0 Layer 3 (V2.0)	Moving Pictures Experts Group	Audio
MPE	Media Player Format	Microsoft	Movies
MPG	MPEG 1 Video	Moving Pictures Experts Group	Movies



## File types and signatures

MPT	Project Template File	Microsoft	Office Document	
MSC	Management Control File	Microsoft	Application	
MSI	Microsoft Installer	Microsoft	Archive	
MSM	Windows Installer Merge Module	Microsoft	Application	
MSP	Microsoft Paint	Microsoft	Graphic	
NCR	NCR Image	NCR	Graphic	
NSF	Lotus Notes Database File	Lotus	Data base	
NTF	Lotus Notes Template File	Lotus	Data base	
O2C	O2C File	mb Software AG	Miscellaneous	
OCX	ActiveX Control File	Microsoft	Application	
OEB	Outlook Express Database File	Microsoft	Mail	
OMG	Image file of O&O DiskImage	O&O Software	Data security	
ONE	OneNote 2003	Microsoft	Office Document	
OPA	OPA File Format	Psion	General	
PAL	Palette Format	Microsoft	Graphic	
PBM	Unix Portable Bitmap Graphic	Free Software Foundation	Graphic	
PCX	PCX File Format	Zsoft	Graphic	
PDB	Visual C++ Program Database File	Microsoft	Application	
PDF	Portable Document Format	Adobe	Document	


## File types and signatures

PFB	Font File Format	Adobe	Application	
PGM	Portable Graymap Graphic		Graphic	
PIC	PC Paint	IBM	Graphic	
PIP	Office Personalized Menu and Toolbar	Microsoft	Application	
PMD	PageMaker File	Adobe	Document	
PNF	Precompiled Setup File Format	Microsoft	Application	
PNG	Portable Network Graphics	Free Software Foundation	Graphic	
POC	POC File Format	Apple	General	
POL	Windows Policy File	Microsoft	Application	
POT	PowerPoint Template	Microsoft	Office Document	
PPD	Printer Description File	Adobe	Application	
PPM	PBM Portable Pixelmap Graphic	Free Software Foundation	Graphic	
PPR	PowerPlay OLAP File	Cognos	Data base	
PPT	PowerPoint 4.0/97/2000/XP/2003	Microsoft	Office Document	
PPTX	PowerPoint 2007	Microsoft	Office Document	
PRJ	PRJ File		Miscellaneous	
PRT	Schedule+ Print File	Microsoft	Application	
PRZ	Freelance Graphics File	Lotus	Office Document	
PS	Postscript	Adobe	Document	
PSD	Photoshop Graphic	Adobe	Graphic	
PSP	Paint Shop Pro Graphic	Jasc Software, Inc.	Graphic	

## File types and signatures

PST	Outlook 97/98/2000/2002/2003	Microsoft	Mail	
PUB	Microsoft Publisher Document	Microsoft	Office Document	
PX	Paradox Database Primary Index	Borland	Data base	
PXN	Fotoman Raw Format	Logitech	Digital camera RAW-Format	
PYC	Python Compiler Script	Bytecode	Document	
PYD	Python Dynamic Module	Bytecode	Document	
PYI	PowerPlay	Cognos	Miscellaneous	
QBW	Quickbooks Data File	Intuit	Data base	
QXD	QuarkXpress	Quark	Graphic	
QXP	QuarkXpress Project	Quark	Document	
RAR	RAR Archive Format	Rarlabs	Archive	
RAS	Sun Raster Image	Sun Microsystems	Graphic	
RAW	RAW RGB 24-bit Graphic		Graphic	
RDF	RDF File Format	Borland	General	
REG	Windows RegEdit File	Microsoft	Application	
REP	ACT!Report Template	Best Software CRM Division	Application	
RESX	NET XML Resource Template	Microsoft	Document	
RGB	Silicon Graphics RGB Bitmap	Silicon Graphics	Graphic	
RGS	RGS File Format	Microsoft	General	



## File types and signatures

RLE	Run Length Encoded Bit-map		Graphic	
RLL	SQL Server Resource Library	Microsoft	Data base	
RM	RealPlayer File	RealNetworks	Audio	
RMI	MIDI Sequence File	Microsoft	Audio	
RTD	Render File	Ragtime	Graphic	
RTF	Rich Text Format		Document	
RTM	RTM File Format		General	
SCR	Windows Screensaver	Microsoft	Application	
SCT	SciTex Continuous Tone	Kodak	Graphic	
SDB	Windows Compatibility Solution Database	Microsoft	Application	
SDY	Starmoney File	Starmoney	Document	
SFL	SFL File Format	Intellifont	General	
SKF	AutoSketch File	Autodesk	Graphic	
SLN	Visual Studio .NET Solution	Microsoft	Document	
SNK	SNK File Format	Microsoft	General	
SOR	SnapShot File	Microsoft	Archive	
STY	STY File Format	Microsoft	General	
SUO	Visual Studio Solution User Options	Microsoft	Document	
SWF	Shockwave Flash File	Macromedia	Movies	
SXC	OpenOffice Spreadsheet	OpenOffice.org	Office Document	

## File types and signatures

SXD	OpenOffice Drawing	OpenOffice.org	Office Document	
SXI	OpenOffice Presentation	OpenOffice.org	Office Document	
SXW	OpenOffice Text Document	OpenOffice.org	Office Document	
SYS	Windows System File	Microsoft	Application	
TAR	TAR Archive	Free Software Foundation	Archive	
TGA	Truevision Targa Graphic		Graphic	
TIF	Tagged Image File Format	Adobe	Graphic	
TOC	Eudora File	Qualcomm	Document	
TPL	ACT!Document Template	Best Software CRM Division	Application	
TSP	TSP File Format	Microsoft	General	
TTF	TrueType Font	Microsoft	Application	
TXT	Text File		Text	
TXT	UTF-8 Text File		Text	
TXT	Unicode Text File		Text	
TXT	Unicode Text File (Big Endian)		Text	
UPP	UPP File Format		General	
USER	USER File Format		General	
VB	Visual Basic File	Microsoft	Application	
VBP	Visual Basic Project	Microsoft	Document	

## File types and signatures

VMC	Virtual PC Virtual Machine	Microsoft	Application	
VMDK	VMware Virtual Disk File	VMware	Application	
VMX	VMware Image File	VMware	Application	
VOB	DVD Video Movie File	Moving Pictures Experts Group	Movies	
VRD	Visio Resource File	Microsoft	Office Document	
VSD	Microsoft Visio Document	Microsoft	Office Document	
VSS	Visio Stencil	Microsoft	Office Document	
VST	Visio Template	Microsoft	Office Document	
VSZ	Visual Studio Extension	Microsoft	Application	
WAB	Outlook Address Book	Microsoft	Mail	
WAV	Windows Audio	Microsoft	Audio	
WBMP	Wireless Bitmap File Format		Graphic	
WFA	"Symantec WinFax PRO Document"	Symantec	Document	
WID	WID File Format	Ventura	General	
WIM	WIM File Format	Microsoft	General	
WIZ	Word Wizard File	Microsoft	Application	
WK3	Lotus 123 File (V3.0)	Lotus	Office Document	
WK4	Lotus 123 File (V4.0)	Lotus	Office Document	
WMA	Windows Media Audio File	Microsoft	Audio	
WMF	Windows Metafile Format	Microsoft	Graphic	

## File types and signatures

WMV	Windows Audio/Movie File	Microsoft	Movies	
WPD	WordPerfect Document	Corel	Office Document	
WPG	WordPerfect Bit-map/Vector	Corel	Graphic	
WPL	Windows Media Player Playlist	Microsoft	Application	
WRI	Windows Write File	Microsoft	Document	
XBM	X Bitmap Graphic		Graphic	
XGn	Paradox Database Secondary Index	Borland	Data base	
XLA	Excel Add-in	Microsoft	Application	
XLS	Excel 5.0/97/2000/XP/2003	Microsoft	Office Document	
XLSX	Excel 2007	Microsoft	Office Document	
XLT	Excel Template	Microsoft	Office Document	
XML	XML File	World Wide Web Consortium	Internet/Web	
XPG	XPG File Format		General	
XPM	X Pixmap Graphic		Graphic	
XPT	XPT File Format		General	
XSN	XSN File Format		General	
XWD	XWD File Format	Microsoft	General	
Xnn	Paradox Database Secondary Index	Borland	Data base	
YGn	Paradox Database Secondary Index	Borland	Data base	
Ynn	Paradox Database Secondary Index	Borland	Data base	

## File types and signatures

ZIC	Zooimage		Text
ZIP	ZIP Archive	Winzip	Archive
ZOO	ZOO 2.00/2.10		Archive

The listed company and product names are trademarks of the corresponding owner.



## Optimize data search and rescue

With O&O DiskRecovery you have a lot of control over the speed and precision of the program's operations. The more detailed you set the scan, the better the restoration results. Please note that a complete and in-depth scan can take some time. It is possible, however, for a scan to be run completely without any user interaction. This can spare you time-consuming interaction with the computer while the scan is being run.

We recommend the activation of the options O&O SmartScan and O&O DeepScan. If this does not suffice in gathering the desired results, activate O&O RawScan and repeat the scan.

You can repeat the scan as many times as you would like with as many different settings as you would like. Because O&O DiskRecovery is only reading the storage media, there is no danger of data loss occurring.

### Quicker Scanning with O&O SmartScan

A common problem that occurs with data recovery is that not only deleted files are recovered. You have to filter through those files that already exist on your system, while looking for deleted files.

With the one-of-a-kind option O&O SmartScan you can hide existing files automatically so that only deleted files are looked for and restored. This can greatly accelerate the data recovery process, depending on the settings.

- You enable/disable this option in the dialogue Advanced options for the search **Additional settings/Adapt settings/General**. This option is set by default.

**Note:** this option is only available, if you run a search through a partition. If you have selected a device (hard disk, USB Stick etc.), the option O&O SmartScan is not available.

### More precise search with O&O DeepScan

Often very small files are not recognized and restored by data recovery programs. Moreover, those files that are found are sometimes restored as much larger files. This can lead to errors in the file's operation. This not only increases how much storage capacity is consumed, but can also lead to undesired results.

The O&O DeepScan technology scans for all files located on your storage media with a special emphasis on finding especially small files. O&O DiskRecovery also tries to identify the correct size of the files so that wasted disk space and errors can be avoided.

- You enable/disable this option in the dialogue Advanced options for the search **Additional settings/Adapt settings/General**. This option is set by default.

## Leaving out file system with O&O RawScan

With the option O&O RawScan you can restore files from partitions, which have been formatted before. If a partition on which you would like to restore deleted data with a new file system (e.g. FAT and now NTFS), then you can direct O&O DiskRecovery with this option to not consider this file system. This enables the recovery of data on a system-wide level and therefore offers the more precise possibility for data recovery.

- You activate/deactivate this option in the dialogue **Selection of search technique/Adapt settings/General** . This option is set by default.

**Note:** this option is only available, if you run a search through a partition. If you have selected a device (hard disk, USB-Stick etc.) , you don't have the option O&O RawScan available.

## Starting O&O DiskRecovery Without Prior Installation

If, during an emergency, O&O DiskRecovery is not yet installed on your computer, you still have the possibility of executing an Instant-Installation. The Instant-Installation is not system bound. In combination with portable disks the possibility exists to start O&O DiskRecovery on that "instant" on a second computer and to select a removable disks (USB-Stick, external hard disk) as target folder for the "Instant-Installation". You can connect the disks afterwards to the actual computer, where data needs to be saved and start O&O DiskRecovery from there. You will completely avoid the installation on your target computer, which possibly might overwrite important data areas of the hard disk, and would thus make data rescue efforts very difficult or even impossible.

**Note:** To execute the Instant-Installation correctly, you will need a second computer and a portable disk or a network connection from which you can access the target computer.

**Note:** If you execute the Instant-Installation on the same computer from which you want to rescue data, you should bear in mind that starting the installation might overwrite important data areas. We therefore recommend to use a second computer and a portable disk for the Instant-Installation.

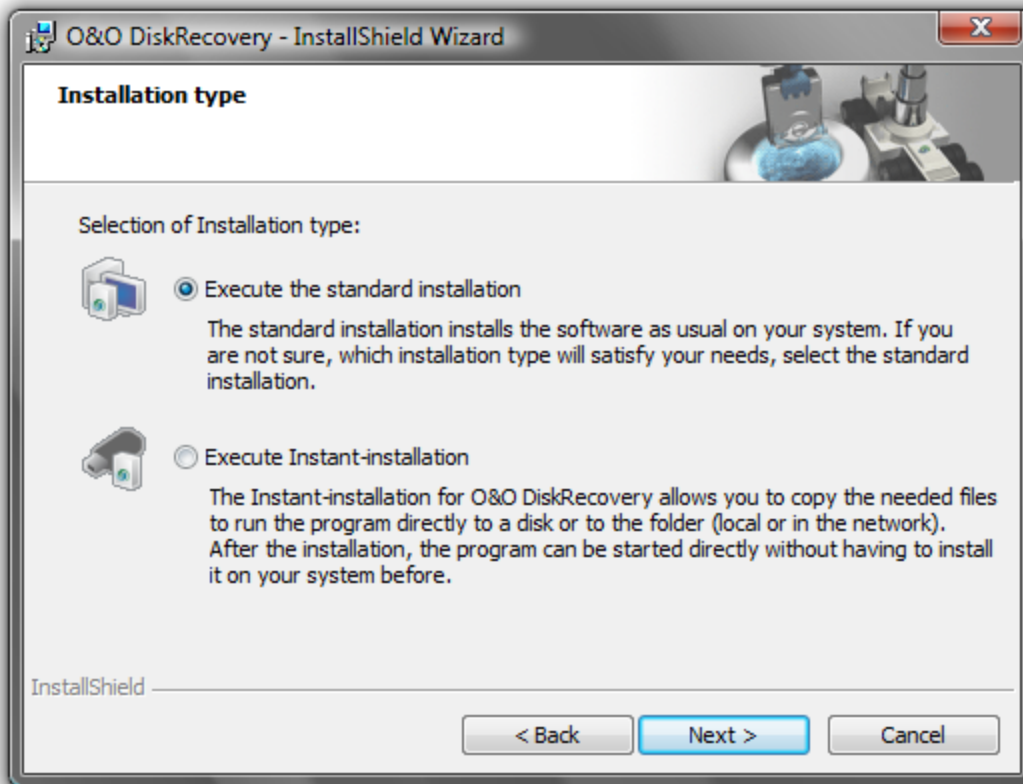
**Note:** Should you have already fully installed O&O DiskRecovery on a computer, then you cannot carry out an Instant Installation on this machine. As a result, the Instant Installation pop-up window will not appear.

## Run Instant-Installation

Run Instant-Installation, if you have already lost data involuntarily and have not installed O&O DiskRecovery on your computer yet.

**Note:** To run the Instant-Installation correctly, you will need a second computer and a portable disk or a network connection from which you can access the target computer.

1. Place the O&O-DiskRecovery-CD in the CD/DVD drive of the second computer or download the installation file from our web server.
2. If you want to use a portable disk (instead of a network connection) for the installation, connect it to the second computer before starting the installation.
3. Start the installation file (\*.exe) and select Instant-Installation in the dialogue.
4. Set the portable disk as target and follow the dialogue prompts to finish the installation.
5. after a successful installation, connect the portable disk to the target computer where you want to rescue data.
6. Start O&O Instant DiskRecovery from there and enter the [license code](#) when asked, which you have received upon purchase of the software.
7. Execute the data rescue as described in chapter [Getting started](#).



Instant-Installation

## License to Use O&O InstantDiskRecovery

With the purchase of the license for O&O DiskRecovery you have also acquired a license for the Instant-Installation. It basically is the "emergency version" of O&O DiskRecovery, which you can use on a different computer, then on the one where O&O DiskRecovery is installed.

Because a single license may only be used on one computer, you will be required to do the following:

1. Open O&O DiskRecovery from the emergency disk on the computer on which you would like to restore one or more deleted file(s).
2. Enter the license code for O&O DiskRecovery. This license now exclusively belongs to this computer!

Once the data restoration has completed, you now can install the full version of O&O DiskRecovery onto this computer. Please note that such an use of this software is not allowed and is against the license agreement. If you would like to use O&O DiskRecovery on multiple computers, it is possible to purchase a multi-user license. Our Sales team would be more than happy to assist with this free of charge and obligation.

## Support and Contact

For more information O&O DiskRecovery, please visit our website <http://www.oo-software.com> and get the latest information about product developments and support. Also included on our website are regularly updated FAQs and Knowledge Bases that address the most common issues regarding our products.

All registered customers receive installation support, free of charge, for the first 30 days after registration. When contacting our support team, please remember to have your registration code available.

In addition, it may be helpful to read the frequently asked questions ([FAQ](#)) section of the web site before contacting our Support Team. It's always possible that your specific question or problem has already been addressed.

**Made in Germany.** Made in Berlin.

All O&O products are developed in Berlin, Germany. O&O is one of the few companies that offers its users phone support without a special rate number. At O&O Software GmbH, we pay very special attention to the concerns of our customers because we know just how important their data is for them. And what's more, we've been doing this for over ten years now!

### O&O Software

Address: Am Borsigturm 48  
13507 Berlin  
Germany

Telephone: +49(0)30 4303 4303  
Fax: +49(0)30 4303 4399

Web: <http://www.oo-software.com>  
e-mail [support@oo-software.com](mailto:support@oo-software.com)  
[sales@oo-software.com](mailto:sales@oo-software.com)

## Authorized Resellers

Our authorized reseller partners in over 30 countries stand ready to assist you with answers to all questions regarding the licensing and purchase of our software products. Their names and addresses can be found on our website, under the heading "Partner - Find Resellers". Just ask us, and we'll be happy to help you find an authorized partner in your vicinity.

# End user license agreement 3.4 (EULA)

O&O Software

GENERAL and SPECIALIZED SECTION

## GENERAL SECTION

IMPORTANT - PLEASE READ CAREFULLY

This End User License Agreement (EULA) is organized into 2 sections: a general part, which is valid for all O&O products, and a specialized part, which includes the particular terms of each corresponding product. By accepting both parts of the license terms they automatically form part of your contract with O&O Software, Am Borsigturm 48, 13507 Berlin. If you have any questions regarding this contract and the license terms, our Service Team is available to help you under [info@oo-software.com](mailto:info@oo-software.com).

The software product is protected by copyright laws and international copyright contracts as well as other laws and agreements concerning intellectual property.

### 1. Object and form of delivery

(1) You receive the software covered by the contract in executable form (Binary code) together with the relevant documentation released by O&O according to Section (6).

(2) The software provides the range of functions described in the given documentation. The documentation regarding functionality may be consulted prior to concluding the contract in the Internet presentation on the following site <http://www.oo-software.com/>.

(3) Delivery will be made according to the way in which you have purchased the software, either by having a disk directly handed over or sent by mail to an address you have supplied or through the forwarding of license as well as any required download information to a given E-mail address.

(4) If you are currently receiving updates as part of a maintenance agreement, these will continue to be supplied in the same way as the initial software delivery, i.e. for a disk sent by mail, a disk containing the update will be sent to the given address: for electronically delivered keys, a key for downloading updates will be sent to the given E-mail address.

(5) Changes to the delivery or E-mail address can only be taken into consideration when they are supplied in writing or by E-mail to the address or E-mail address indicated on <http://www.oo-software.com> at least two weeks before delivery of the update.

(6) A printed copy of the documentation will not be included in delivery. The documentation consists primarily of electronic aids.

### 2. Requirements for application (system requirements)

(1) Installation of the software is not part of the agreement.

(2) Depending on the software, there are certain system requirements that must be met in order to use the software according to the terms of this contract. These will be defined according to each product in the specialized section of this contract.

### 3. Rights of use, including test versions, unauthorized transfer, and application

(1) O&O grants you, upon payment of the agreed one-time fee, a permanent, spatially unlimited and non-exclusive right to use the software.

- (2) Test versions - if you have installed a test version of one of our products taken from the O&O Website <http://www.oo-software.com/>, the right of use will be, according to the program, for a limited time only and/or technically restricted.
- (3) One copy of the software is entitled to be used on a maximum of one (1) output device/workstation simultaneously.
- (4) If you want to use the software on more than one output device/workstation, the rights of use must be extended accordingly. To find out which O&O products are also available as volume licenses, please consult (<http://www.oo-software.com/>). The separate price list concerning O&O Volume Licenses will apply to extending the rights of use without redelivery.
- (5) Any use beyond that agreed upon in the contract is one in violation of the contract. In such a case, you are required to report this use that exceeds the rights of use to the supplier without any delay. The parties will then try to bring about an agreement for extending the rights of use. For the duration of the excessive usage, i.e., until the conclusion of such an agreement or the cessation of the excessive usage, you are required to pay compensation for this excessive usage according to the amount indicated in our price lists. The amount of compensation will be calculated on the basis of a four year, straight-line depreciation. If we are not informed of the excessive usage, a contract penalty in the amount three times the price of the usage indicated in the price list will be due O&O.
- (6) You are entitled to create a backup copy of the software and to conduct ordinary data backups. The creation of more copies than the amount needed for the backing up of any future usage (including the backup copies and data backups) is not allowed.
- (7) Copyrights and other trademarks within the software may not be altered or removed. They must be transferred onto every copy of the software.
- (8) Unauthorized transfer - only when you have purchased the software with an accompanying disk are you permitted to transfer it and then, only under the following conditions: a resale of the software is only permitted when it involves an entire software copy, i.e., by surrendering your own usage of the purchased copy, you are entitled to transfer these rights of use of the disk onto a third party according to the terms of the agreement existing between you and O&O. When making such a transfer, you are required to hand over to the third party all materials related to the software that are covered in the contract and to delete the software from any storage volumes (e.g., hard disks) remaining in your possession.
- (9) Unauthorized rental and service - The purchase of this contract does not entitle you to any public transfer or rental of the software. You are also not entitled to include the software as part of your providing services for and in the presence of any third parties. You may purchase an appropriate license from O&O for doing this.

#### **4. Payment**

- (1) The prices are given with the corresponding sales taxes included, unless otherwise indicated.
- (2) Test versions - Downloads of test versions offered by O&O are provided free of charge, unless otherwise indicated.
- (3) If you receive updates of your programs as part of a Maintenance Agreement, the terms of payment in these contracts will apply to these Maintenance Agreements.
- (4) O&O is entitled to forward any data it has received onto third parties requiring it for purposes of collection.
- (5) Until payment is made in full, O&O retains possession of all rights, particularly those concerning copyrighted rights of use, on the materials included in this contract. O&O is specifically entitled to cancel a contract, for example, when your payment is delayed, it prohibits the further using of the software and demands the surrendering of all copies or this being impossible, to demand their deletion. Should a third party have access to the object of purchase before payment is completed for the contractual software, you are required to inform this third party about the object being the property of O&O and to inform O&O, in writing, about the third party's access.

#### **5. Material defect and defect of title**

End user license agreement 3.4 (EULA)

(1) The software package or download you receive is free of any material defect or defect of title.

(2) A material defect exists when the software is unable to be used as described in the documentation appearing on the website <http://www.oo-software.com/> and included in delivery or available for downloading.

O&O is constantly checking to make sure that other sources are not misrepresenting the functions and properties of the software as described in the documentation. You can therefore assume that any descriptions beyond those found in the software documentation have not originated with O&O and are also unknown to it. Please inform O&O if you learn of any software descriptions that include functions and properties not mentioned in the documentation.

(3) Please inform O&O if you learn of any software descriptions that include functions and properties not mentioned in the documentation.

(4) Any claims concerning defects of material and/or title related to the software have a limitation period of two years subsequent to delivery of the program or transmission of the serial number needed for downloading. If you are not a private individual, the warranty period is shortened to one year.

If O&O has fraudulently concealed a material defect, a three year limitation period will cover claims related to this defect.

Payment for compensation that you might have been entitled to as a result of cancellation or an abatement can be refused upon expiration of the limitation period.

(5) You are required to inform O&O, in writing if possible, of any defects that arise immediately upon their discovery. While doing so you should also describe, as well as possible, how the defect is communicated, the effect it has on the program, and under which circumstances it occurs.

(6) Should defects be reported to O&O within the limitation period, it will undertake a cure free of charge.

(7) As part of the cure, the corrected software will be redelivered as agreed. An on-site analysis and correction of the error on your system will not take place.

O&O assumes the ensuing expenses for the cure, in particular the costs for transport, labor, and material. You are personally responsible for installation. O&O specifically does not assume on-site installation as part of its obligation with regard to defects of material or title.

Should a change of the program be required as part of the cure, O&O will make the necessary changes in the documentation without any charges.

(8) After the unsuccessful expiration of a deadline you set for cure, you can cancel the contract or reduce the purchase price and demand compensation instead of service or the replacement of any futile expenditures.

(9) A deadline is not required when

- a) O&O refuses both kinds of cure, even if it is entitled to do so as a result of the arising expenses or
- b) the cure is impossible or
- c) the cure is unacceptable to you or
- d) the cure is unsuccessful.

A subsequent improvement is considered a failure after the second unsuccessful attempt unless there is something particular about the type of software or the defect itself or the surrounding circumstances that would indicate otherwise.

(10) You are not entitled to cancel the contract if the defect is negligible, nor may you, in this event, demand compensation instead of full service.



(11) In the event of cancellation, compensation is due for any uses made. The compensation for use will be based on a four year, straight-line depreciation of the purchase price.

(12) As a result of the abatement, the purchase price will be reduced by the amount which is calculated for deducting the defect from the value of the software. The standard used will be its value at the time the contract was concluded. The amount, when necessary, is to be calculated by estimation. As a result of this reduction, any amount larger than that paid for the reduced purchase price will be refunded.

(13) If it turns out that a reported problem did not arise as a result of a defect in the software, O&O is entitled to invoice you, according to the amount charged in its price lists for such services, the expenses for analysis and correction of the problem if you can be accused of malice or gross negligence.

(14) The seller's warranty is canceled when changes are made on the software without expressed written consent or when the software is not used as intended or used in an improper software environment, unless you can prove that these facts had nothing to do with the problems that occurred.

## **6. Limitation of compensation**

(1) O&O is liable for compensation for every legal ground to the extent described in the following provisions.

(2) The extent of liability of O&O for damages caused by malice or gross negligence arising from O&O itself or one of its vicarious or legal agents is unlimited.

(3) There is no limit to the extent of liability of O&O or any of its legal or vicarious agents for damages involving injury to life, physical well-being or health, or for simple breach of duty.

(4) There is unlimited liability for damages caused by serious organizational fault on the part of O&O as well as for damages arising from a missing guaranteed characteristic.

(5) For the breach of an essential contractual duty, O&O is liable for damages normally foreseen in a contract when none of the instances in provisions (2) - (4) applies.

(6) Any further liability for compensation is excluded, specifically excluded is liability without fault.

(7) Liability as defined by the product liability law remains untouched.

(8) If damage can be traced to have arisen through a fault on the part of O&O as well as on the part of yourself, you must have your share of the fault evaluated.

You are responsible for making a standard backup of your data at least once a day. For data loss caused by O&O, O&O is only liable for the expense of duplicating the data on your backup copies that need to be created and for the restoration of data which would have also been lost during a standard backup procedure.

## **7. Final provisions**

(1) You may only balance claims from O&O with indisputable or legally valid claims.

(2) Changes and amendments to this contract must be made in writing. This also applies to changes to this provision.

(3) The contract is subject to German law. The uniform UN purchasing law (CISG) as well as the UNIDROIT Factoring Agreement of Ottawa do not apply.

(4) Any general terms and conditions on your part will not be applied.

(5) In the event you are not a private individual or a resident of the Federal Republic of Germany, we agree that the district court in Berlin will be the competent court for litigation arising from this contract.

## **8. Contact**

If you have any questions concerning the O&O Software License Agreement or wish to speak with O&O, please get in touch with us.

O&O Software GmbH, Am Borsigturm 48, 13507 Berlin, Germany.

Telephone: +49 (0)30 4303 4303, Fax: +49 (0)30 4303 4399

E-Mail [info@oo-software.com](mailto:info@oo-software.com) / [sales@oo-software.com](mailto:sales@oo-software.com), Web [www.oo-software.com](http://www.oo-software.com)

## **SPECIALIZED SECTION**

### **O&O BlueCon**

Important note on the Windows PE Start CD

The Microsoft® Windows® Preinstallation Environment software included with this device or software may be used for boot, diagnostic, setup, restoration, installation, configuration, test or disaster recovery purposes only.

**NOTE: THIS SOFTWARE CONTAINS A SECURITY FEATURE THAT WILL CAUSE END USER'S SYSTEM TO REBOOT WITHOUT PRIOR NOTIFICATION TO THE END USER AFTER 72 HOURS OF CONTINUOUS USE.**

Amendment to: 2. Requirements for application (system requirements)

The software requires Windows 2000 (all Editions), Windows Server 2003 (all Editions), Windows XP (all Editions), Windows Vista (all Editions), Windows Server 2008 (all Editions), Windows 7 (all Editions) or Windows Server 2008 R2 (all Editions) operating systems. Usage within the terms of this contract is not achieved without the application of these operating systems.

The product at hand can only be employed according to the acquired license. The following license types exist for O&O BlueCon:

#### O&O BlueCon Admin Edition

You are authorized to install and use the software product on all computers a) in the possession of the company (legal person or natural person(s) in the case of corporations) owning the license and b) all located at a single site. This license is bound to a single natural person and is non-transferable.

#### O&O BlueCon Tech Edition

You are authorized to install and use the software product on all computers. This includes computers that do not belong to the company owning the license (also known as Service Technician's License). This license is bound to a single natural person and is non-transferable.

### **O&O BuildPE**

Amendment to: 2. Requirements for application (system requirements)

The software requires Windows Vista (all Editions) or Windows Server 2008 (all Editions), Windows 7 (all Editions) or Windows Server 2008 R2 (all Editions) operating systems. Usage within the terms of this contract is not achieved without the application of these operating systems.

### **O&O CleverCache**

Amendment to: 2. Requirements for application (system requirements)

#### O&O CleverCache Professional Edition

## End user license agreement 3.4 (EULA)

The software requires the Windows XP (all Editions), Windows Vista (all Editions) or Windows 7 (all editions) operating systems. Usage within the terms of this contract is not achieved without the application of these operating systems.

### O&O CleverCache Server Edition

The software requires Windows 2000 (all Editions), Windows Server 2003 (all Editions), Windows XP (all Editions), Windows Vista (all Editions), Windows Server 2008 (all Editions), Windows 7 (all Editions) or Windows Server 2008 R2 (all Editions) operating systems. Application within the terms of this contract is not achieved without the use of one of these operating systems.

### **O&O Defrag**

Amendment to: 2. Requirements for application (system requirements)

### O&O Defrag Professional Edition

The software requires Windows XP (all Editions), Windows Vista (all Editions) or Windows 7 (all Editions) operating systems. Usage within the terms of this contract is not achieved without the application of these operating systems. Control of the program through a network management is not possible.

### O&O Defrag Workstation Edition

The software requires the Windows XP (all Editions), Windows Vista (all Editions) or Windows 7 (all editions) operating systems. Usage within the terms of this contract is not achieved without the application of these operating systems. The O&O Defrag Workstation Edition may be used on computers with or without the user interface. You are entitled to control this program over the separately obtainable network manager.

### O&O Defrag Server Edition

The software requires Windows Server 2003 (all Editions), Windows XP (all Editions), Windows Vista (all Editions), Windows Server 2008 (all Editions), Windows 7 (all Editions) or Windows Server 2008 R2 (all Editions) operating systems. Usage within the terms of this contract is not achieved without the application of these operating systems. The O&O Defrag Server Edition may be used on computers with or without the user interface. You are entitled to control this program over the separately obtainable network manager.

### O&O Defrag Virtual Machine Edition

The O&O Defrag Workstation Edition may be used on computers with or without the user interface. You must own a minimum of one Server Edition to use a Virtual Machine Edition.

### **O&O DiskImage**

Important note on the Windows PE Start CD

This note is only valid for the O&O DiskImage Professional and the Server Edition Start CD. The Microsoft® Windows™ Preinstallation Environment (Windows PE) is not a part of O&O DiskImage Express, Special and the Workstation Edition!

The Microsoft® Windows® Preinstallation Environment software included with this device or software may be used for boot, diagnostic, setup, restoration, installation, configuration, test or disaster recovery purposes only.

NOTE: THIS SOFTWARE CONTAINS A SECURITY FEATURE THAT WILL CAUSE END USER'S SYSTEM TO REBOOT WITHOUT PRIOR NOTIFICATION TO THE END USER AFTER 72 HOURS OF CONTINUOUS USE.

Amendment to: 2. Requirements for application (system requirements)

### The O&O DiskImage Express Edition

## End user license agreement 3.4 (EULA)

The software requires Windows XP (all Editions), Windows Vista (all Editions) or Windows 7 (all Editions) operating systems. Usage within the terms of this contract is not achieved without the application of these operating systems. Control of the program through a network management is not possible.

### O&O DiskImage Professional Edition and Special Edition

The software requires Windows XP (all Editions), Windows Vista (all Editions) or Windows 7 (all Editions) operating systems. Usage within the terms of this contract is not achieved without the application of these operating systems. Control of the program through a network management is not possible.

### O&O DiskImage Workstation Edition

The software requires the Windows XP (all Editions), Windows Vista (all Editions) or Windows 7 (all editions) operating systems. Usage within the terms of this contract is not achieved without the application of these operating systems. The O&O DiskImage Workstation Edition may be used on computers with or without the user interface. You are entitled to control this program over the separately obtainable network manager.

### O&O DiskImage Server Edition

The software requires Windows Server 2003 (all Editions), Windows XP (all Editions), Windows Vista (all Editions), Windows Server 2008 (all Editions), Windows 7 (all Editions) or Windows Server 2008 R2 (all Editions), operating systems. Usage within the terms of this contract is not achieved without the application of these operating systems. The O&O DiskImage Server Edition may be used on computers with or without the user interface. You are entitled to control this program over the separately obtainable network manager.

### O&O DiskImage Virtual Machine Edition

The O&O Defrag Workstation Edition may be used on computers with or without the user interface. You must own a minimum of one Server Edition to use a Virtual Machine Edition.

## Amendment to: 3. Rights of use, including test versions, unauthorized transfer, and application

### Creation and restoration of images

The source computer and each target computer are required to hold licenses, to create and restore images using O&O DiskImage. One license is sufficient under the previously mentioned terms, if the source and the target computer is one non-virtual workstation. Each virtual machine is seen as an independent computer; in other words, each virtual machine needs its own license.

## **O&O DiskRecovery**

### Amendment to: 2. Requirements for application (system requirements)

The software requires Windows 2000 (all Editions), Windows Server 2003 (all Editions), Windows XP (all Editions), Windows Vista (all Editions), Windows Server 2008 (all Editions), Windows 7 (all Editions) or Windows Server 2008 R2 (all Editions), operating systems. Application within the terms of this contract is not achieved without the use of one of these operating systems.

The product at hand can only be employed according to the acquired license. The following license types exist for O&O DiskRecovery:

### O&O DiskRecovery Professional Edition

You are authorized to install and use the software product on only one computer. This should be used wholly in conjunction with all hardware in your possession, i.e. this license may not be used to provide a service to a third party. Other limitations may apply in the software itself. Please consult the software documentation for more information on these limitations.

### O&O DiskRecovery Admin Edition

## End user license agreement 3.4 (EULA)

You are authorized to install and use the software product on all computers

a) in the possession of the company (legal person or natural person(s) in the case of corporations) owning the license and b) all located at a single site. This should be used wholly in conjunction with all hardware in your possession, i.e. this license may not be used to provide a service to a third party. This license is bound to a single natural person and is non-transferable.

### O&O DiskRecovery Tech Edition

You are authorized to install and use the software product on all computers. This includes computers that do not belong to the company owning the license (also known as Service Technician's License). This license is bound to a single natural person and is non-transferable.

### **O&O DiskStat**

Amendment to: 2. Requirements for application (system requirements)

### O&O DiskStat Professional Edition

The software requires Windows 2000 Professional or Windows XP (all Editions) Windows Vista (all Editions) or Windows 7 (all Editions) operating systems. Usage within the terms of this contract is not achieved without the application of these operating systems.

### O&O DiskStat Workstation Edition

The software requires Windows 2000 Professional or Windows XP (all Editions) Windows Vista (all Editions) or Windows 7 (all Editions) operating systems. Usage within the terms of this contract is not achieved without the application of these operating systems. The O&O DiskStat Workstation Edition may be used on computers with or without the user interface. You are entitled to control this program over the separately obtainable network manager.

### O&O DiskStat Server Edition

The software requires Windows 2000 (all Editions), Windows Server 2003 (all Editions), Windows XP (all Editions), Windows Vista (all Editions), Windows Server 2008 (all Editions), Windows 7 (all Editions) or Windows Server 2008 R2 (all Editions), operating systems. Application within the terms of this contract is not achieved without the use of one of these operating systems.

### O&O DiskStat Virtual Machine Edition

The O&O Defrag Workstation Edition may be used on computers with or without the user interface. You must own a minimum of one Server Edition to use a Virtual Machine Edition.

### **O&O DriveLED**

Amendment to: 2. Requirements for application (system requirements)

### O&O DriveLED Professional Edition

The software requires Windows XP (all Editions), Windows Vista (all Editions) or Windows 7 (all Editions) operating systems. Usage within the terms of this contract is not achieved without the application of these operating systems. Control of the program through a network management is not possible.

### O&O DriveLED Workstation Edition

The software requires Windows XP (all Editions), Windows Vista (all Editions) or Windows 7 (all Editions) operating systems. Usage within the terms of this contract is not achieved without the application of these operating systems. The O&O DriveLED Workstation Edition may be used on computers with or without the user interface. You are entitled to control this program over the separately obtainable network manager.

### O&O DriveLED Server Edition

## End user license agreement 3.4 (EULA)

The software requires Windows 2000 (all Editions), Windows Server 2003 (all Editions), Windows XP (all Editions), Windows Vista (all Editions), Windows Server 2008 (all Editions), Windows 7 (all Editions) or Windows Server 2008 R2 (all Editions) operating systems. Usage within the terms of this contract is not achieved without the application of these operating systems. The O&O DriveLED Server Edition may be used on computers with or without the user interface. You are entitled to control this program over the separately obtainable network manager.

### O&O DriveLED Virtual Machine Edition

The O&O Defrag Workstation Edition may be used on computers with or without the user interface. You must own a minimum of one Server Edition to use a Virtual Machine Edition.

## **O&O Enterprise Management Console**

Important note on the Microsoft SQL Server

This product uses the Microsoft SQL Server or Microsoft SQL Server Express Edition. To the extent that these programs are part of the installation of this product, the terms of their licensing related to the use of this software will also apply to the terms of this agreement.

The use of Microsoft SQL Server Express Edition is free of charge in conjunction with this product. The purchase of licenses for O&O Enterprise Management Console and related products is separate from any possible purchase of SQL Server products.

Amendment to: 2. Requirements for application (system requirements)

The software requires Windows 2000 (all Editions), Windows Server 2003 (all Editions), Windows XP (all Editions), Windows Vista (all Editions), Windows Server 2008 (all Editions), Windows 7 (all Editions) or Windows Server 2008 R2 (all Editions) operating systems. Usage within the terms of this contract is not achieved without the application of these operating systems.

## **O&O EventViewer**

Amendment to: 2. Requirements for application (system requirements)

### O&O EventViewer Workstation Edition

The software requires Windows 2000 Professional or Windows XP (all Editions) Windows Vista (all Editions) or Windows 7 (all Editions) operating systems. Usage within the terms of this contract is not achieved without the application of these operating systems. The O&O EventViewer Workstation Edition may be used on computers with or without the user interface. You are entitled to control this program over the separately obtainable network manager.

### O&O EventViewer Server Edition

The software requires Windows 2000 (all Editions), Windows Server 2003 (all Editions), Windows XP (all Editions), Windows Vista (all Editions), Windows Server 2008 (all Editions), Windows 7 (all Editions) or Windows Server 2008 R2 (all Editions), operating systems. Usage within the terms of this contract is not achieved without the application of these operating systems.

### O&O EventViewer Virtual Machine Edition

The O&O Defrag Workstation Edition may be used on computers with or without the user interface. You must own a minimum of one Server Edition to use a Virtual Machine Edition.

## **O&O ISOBoot**

Important note for working with O&O ISOBoot

The program overwrites the target data volume (these include among other things rewritable CDs or USB sticks). Please make sure that no data you need is left on the target data volume. Overwriting data cannot be reversed!

## End user license agreement 3.4 (EULA)

O&O formally declares that it is not responsible for damages arising from the improper use of O&O ISOBoot.

Amendment to: 2. Requirements for application (system requirements)

The software requires the Windows 2000 (all Editions), Windows Server 2003 (all Editions), Windows XP (all Editions), Windows Vista (all Editions), Windows 7 (all Editions) or Windows Server 2008 (all Editions) operating systems. Application within the terms of this contract is not achieved without the use of one of these operating systems.

Amendment to: 4. Payment

O&O demands no fee for the use of this license. In addition, a fee for this license and this program may not be demanded by any Third Parties, unless this is done with the expressed approval of O&O. When in doubt, please get in touch with us. You can find our contact data at the end of this license agreement.

### **O&O MediaRecovery**

Amendment to: 2. Requirements for application (system requirements)

The software requires Windows 2000 (all Editions), Windows Server 2003 (all Editions), Windows XP (all Editions), Windows Vista (all Editions), Windows Server 2008 (all Editions), Windows 7 (all Editions) or Windows Server 2008 R2 (all Editions), operating systems. Usage within the terms of this contract is not achieved without the application of these operating systems.

### **O&O PartitionManager**

Important note on the Windows PE Start CD

The Microsoft® Windows® Preinstallation Environment software included with this device or software may be used for boot, diagnostic, setup, restoration, installation, configuration, test or disaster recovery purposes only.

NOTE: THIS SOFTWARE CONTAINS A SECURITY FEATURE THAT WILL CAUSE END USER'S SYSTEM TO REBOOT WITHOUT PRIOR NOTIFICATION TO THE END USER AFTER 72 HOURS OF CONTINUOUS USE.

Amendment to: 2. Requirements for application (system requirements)

#### O&O PartitionManager Professional Edition

The software requires Windows 2000 Professional or Windows XP (all Editions), Windows Vista (all Editions) or Windows 7 (all Editions) operating systems. Usage within the terms of this contract is not achieved without the application of these operating systems.

#### O&O PartitionManager Server Edition

The software requires Windows 2000 (all Editions), Windows Server 2003 (all Editions), Windows XP (all Editions), Windows Vista (all Editions), Windows Server 2008 (all Editions), Windows 7 (all Editions) or Windows Server 2008 R2 (all Editions), operating systems. Usage within the terms of this contract is not achieved without the application of these operating systems.

### **O&O RegEditor**

Important note for working with the Microsoft Windows Registry

Before making changes to the Microsoft Windows Registry (in the following Registry), you should prepare a backup copy of the Registry and ensure that you'll be able to restore the Registry if a problem should arise.

O&O formally declares that it is not responsible for damages arising from the improper use of O&O RegEdit. Changes to the Registry should only be made by experienced users who are aware of the consequences of such changes. A defective Registry can influence the entire stability of the system and lead to a crash of the computer or make it unable to start. This can further lead to loss of data.

## End user license agreement 3.4 (EULA)

### Amendment to: 2. Requirements for application (system requirements)

The software requires Windows 2000 (all Editions), Windows Server 2003 (all Editions), Windows XP (all Editions), Windows Vista (all Editions) or Windows Server 2008 (all Editions) operating systems. Application within the terms of this contract is not achieved without the use of one of these operating systems.

### Amendment to: 4. Payment

O&O demands no fee for the use of O&O RegEditor. In addition, a fee for this license and this program may not be demanded by any Third Parties, unless this is done with the expressed approval of O&O. When in doubt, please get in touch with us. You can find our contact data at the end of this license agreement.

## **O&O RescueBox**

### Important note on the Windows PE Start CD

The Microsoft® Windows® Preinstallation Environment software included with this device or software may be used for boot, diagnostic, setup, restoration, installation, configuration, test or disaster recovery purposes only.

NOTE: THIS SOFTWARE CONTAINS A SECURITY FEATURE THAT WILL CAUSE END USER'S SYSTEM TO REBOOT WITHOUT PRIOR NOTIFICATION TO THE END USER AFTER 72 HOURS OF CONTINUOUS USE.

### Amendment to: 2. Requirements for application (system requirements)

The software requires Windows 2000 (all Editions), Windows Server 2003 (all Editions), Windows XP (all Editions), Windows Vista (all Editions), Windows Server 2008 (all Editions), Windows 7 (all Editions) or Windows Server 2008 R2 (all Editions) operating systems. Usage within the terms of this contract is not achieved without the application of these operating systems.

The product at hand can only be employed according to the acquired license. The following license types exist for O&O RescueBox:

#### O&O RescueBox Personal Edition

You are authorized to install and use the software product on only one computer. This should be used wholly in conjunction with all hardware in your possession, i.e. this license may not be used to provide a service to a third party. Other limitations may apply in the software itself. Please consult the software documentation for more information on these limitations.

## **O&O SafeErase**

### Amendment to: 2. Requirements for application (system requirements)

#### O&O SafeErase Professional Edition

The software requires Windows XP (all Editions), Windows Vista (all Editions) or Windows 7 (all Editions) operating systems. Usage within the terms of this contract is not achieved without the application of these operating systems.

#### O&O SafeErase Workstation Edition

The software requires Windows XP (all Editions), Windows Vista (all Editions) or Windows 7 (all Editions) operating systems. Usage within the terms of this contract is not achieved without the application of these operating systems.

#### O&O SafeErase Server Edition

The software requires Windows 2000 (all Editions), Windows Server 2003 (all Editions), Windows XP (all Editions), Windows Vista (all Editions), Windows Server 2008 (all Editions), Windows 7 (all Editions) or Windows Server 2008 R2 (all Editions) operating systems. Usage within the terms of this contract is not achieved without the application of these operating systems.



**O&O SSD Migration Kit**

Amendment to: 2. Requirements for application (system requirements)

The software requires Windows XP (all Editions), Windows Vista (all Editions) or Windows 7 (all Editions) operating systems. Usage within the terms of this contract is not achieved without the application of these operating systems. Control of the program through a network management is not possible.

**O&O UnErase**

Amendment to: 2. Requirements for application (system requirements)

The software requires Windows Server 2003 (all Editions), Windows XP (all Editions), Windows Vista (all Editions), Windows Server 2008 (all Editions), Windows 7 (all Editions) or Windows Server 2008 R2 (all Editions), operating systems. Application within the terms of this contract is not achieved without the use of one of these operating systems.