



 O&O Enterprise Management Console

# Copyrights

Text, illustrations and examples have been produced with great care. The editor is neither legally nor in any other way liable for incorrect information given and its possible consequences.

This document is protected by copyright. All rights reserved. Without written approval no part of this document may be reproduced through photocopying, microfilming or any other procedure, nor may it be translated into a language used by machines, especially data-processing plants. Rights are likewise reserved for quotation in lectures, on radio and television.

Microsoft, Windows 2000, Windows XP, Windows Vista, Windows 7, Windows 2003, Windows 2008, and Windows 2008 R2 are registered trademarks of Microsoft Corporation, Redmond, WA, USA. O&O and the O&O-logo are registered trademarks of the O&O Software GmbH, Berlin.

Rev. 5/20/2010 4:00 PM

©1997 - 2010 O&O Software GmbH • Am Borsigturm 48 • 13507 Berlin • Germany

<http://www.oo-software.com>

# Contents

---

<b>About O&amp;O Enterprise Management Console</b> .....	<b>1</b>
Important features at a glance.....	1
Integratable O&O products.....	2
<b>Design and functionality</b> .....	<b>3</b>
Definition of terms.....	3
OOEMC.....	3
Module.....	3
Control service.....	4
Gateway agent.....	4
Product agent.....	4
General communication model.....	4
Functional principle.....	5
Design of OOEMC.....	6
<b>System requirements</b> .....	<b>8</b>
<b>Installation</b> .....	<b>9</b>
Starting installation.....	9
Customized installation.....	10
Complete installation.....	11
Notes on the application of one's own SQL Server.....	11
Enter license.....	11
Use the test version.....	12
Uninstall.....	12
Updates.....	12
<b>Getting started</b> .....	<b>14</b>
Step 1: Preparing the target computers.....	14
Allow exceptions.....	16
Step 2: First start after the installation.....	17
Step 3: Tutorial.....	18

---

End tutorial.....	19
Step 4: Setting up computer permissions/remote installation.....	19
Step 5: Manage licenses.....	20
Enter license key for module.....	21
Step 6: Add new computer.....	23
Step 7: Create new Job.....	25
Create schedule for new job.....	27
Step 8: Assign Job to computer.....	28
Assign Job to computer site.....	29
<b>Additional features of the computers.....</b>	<b>30</b>
Find and add computer.....	30
Import/export site list.....	31
Remove computer or site.....	31
Update computer information.....	32
Remote installation check.....	32
Remote control.....	32
Display computer properties.....	33
Execute Job on a computer.....	34
<b>Additional features of sites.....</b>	<b>36</b>
Create site.....	36
Add computer to site.....	37
Remove computer from site.....	37
Find computers and administrative units.....	38
Import/export sites.....	38
Copy sites.....	38
<b>Additional features of Jobs.....</b>	<b>39</b>
Create new Job.....	39
Specific features for Jobs with O&O DiskImage.....	40
Map network drive.....	40

---

Change Job settings.....	43
Assign Job to computer.....	44
Delete Job.....	44
<b>Readout module overlapping information.....</b>	<b>45</b>
View all Jobs (Job monitor).....	45
Job calendar.....	45
Read transfer status (status monitor).....	45
Reports.....	46
Search reports.....	46
<b>Options.....</b>	<b>48</b>
Login to the database.....	48
User management.....	49
Manage control service.....	49
Retry-connection interval.....	50
Synchronization interval.....	51
SSL encryption.....	52
Pause service activities.....	52
Computer access.....	52
E-mail notification of events.....	53
Log file.....	54
Report settings.....	54
Miscellaneous.....	55
Automatic update of views.....	56
Hide synchronization of computers.....	56
Load product start page from the Internet.....	56
Module options.....	56
Update the installation of the module.....	57
Tutorial options.....	58
<b>Imaging the database.....</b>	<b>59</b>

---

<b>Maintenance and repair</b> .....	<b>60</b>
<b>Apply O&amp;O EventViewer</b> .....	<b>61</b>
<b>Frequently asked questions</b> .....	<b>62</b>
<b>Support and Contact</b> .....	<b>63</b>
Authorized resellers.....	63
<b>End user license agreement 2.6 (EULA)</b> .....	<b>64</b>

# About O&O Enterprise Management Console

O&O Enterprise Management Console (OOEMC) will allow you to manage all your O&O products from a central location across your network. From there you can allocate Jobs to single computers or sites, and schedule automatic remote installations of the product agents. All events and data will be saved in a database, which ensures that you can always be supplied with detailed reports about the success of any jobs and about the status of the agents.

We hope that OOEMC will make your working in a network easier and that you'll be able to save all the time you'd otherwise need for managing every one of your company's computers manually.

Yours O&O Software

<http://www.oo-software.com>

**Note:**Please bear in mind that the charts in the handbook or the Online Help might vary from you program interface, due to program updates.

## More:

[Important features at a glance](#)

[Installation and preliminary measures](#)

[Getting started](#)

## Important features at a glance

You can manage various O&O programs (Server or Workstation Editions) in the network with the OOEMC. The Console offers a fully automated remote installation and Job distribution on Clients. If, for example, a Client is not available when a Job is being allocated, the request will be repeated automatically at a specified interval. The user interface does not need to be started for this. The background components of the OOEMC will automatically execute the Jobs. You can thereby reach a significantly larger number of computers in much less time than you'd need when using the manual request method.

A further advantage is that the components of OOEMC are always active, which means that Jobs and reports are constantly in synch. The SQL Server serves as storage location. There is no longer any need to wait for reports because these can be accessed from the database at any time and do not have to be accessed from the Client. The database has now become the central storage location for jobs and reports.

## Features at a glance:

- Central management for controlling jobs across a network
- Schedule the automatic running of jobs across a network
- Automated remote installation of O&O Products in the network
- Running of Windows commands (Batches) before and after the running of a job across a network
- Detailed Job Assistant with product specific setting options
- Constantly active Control Service for communicating between clients and SQL
- Detailed reporting
- Automated licensing on the target computers
- NEW: O&O DriveLED as new module options
- NEW: [O&O EventViewer](#) integrated as default module
- NEW: [Dynamical loading](#) of modules, also from the Internet
- NEW: [Tutorials](#) for easy entry

## About O&O Enterprise Management Console

- NEW: Even faster execution of Jobs
- NEW: Graphical interactive view of the Job status
- NEW: Automated cyclical updates of the computer list.

## Integratable O&O products

You can manage the following O&O Products in their current version with the O&O Enterprise Management Console in the network:

- [O&O Defrag](#)
- [O&O DiskImage](#)
- [O&O DiskStat](#)
- [O&O DriveLED](#)
- [O&O EventViewer](#)

Please bear in mind that only the Workstation and Server Editions of the listed O&O programs include an interface for the O&O Enterprise Management Console.



# Design and functionality

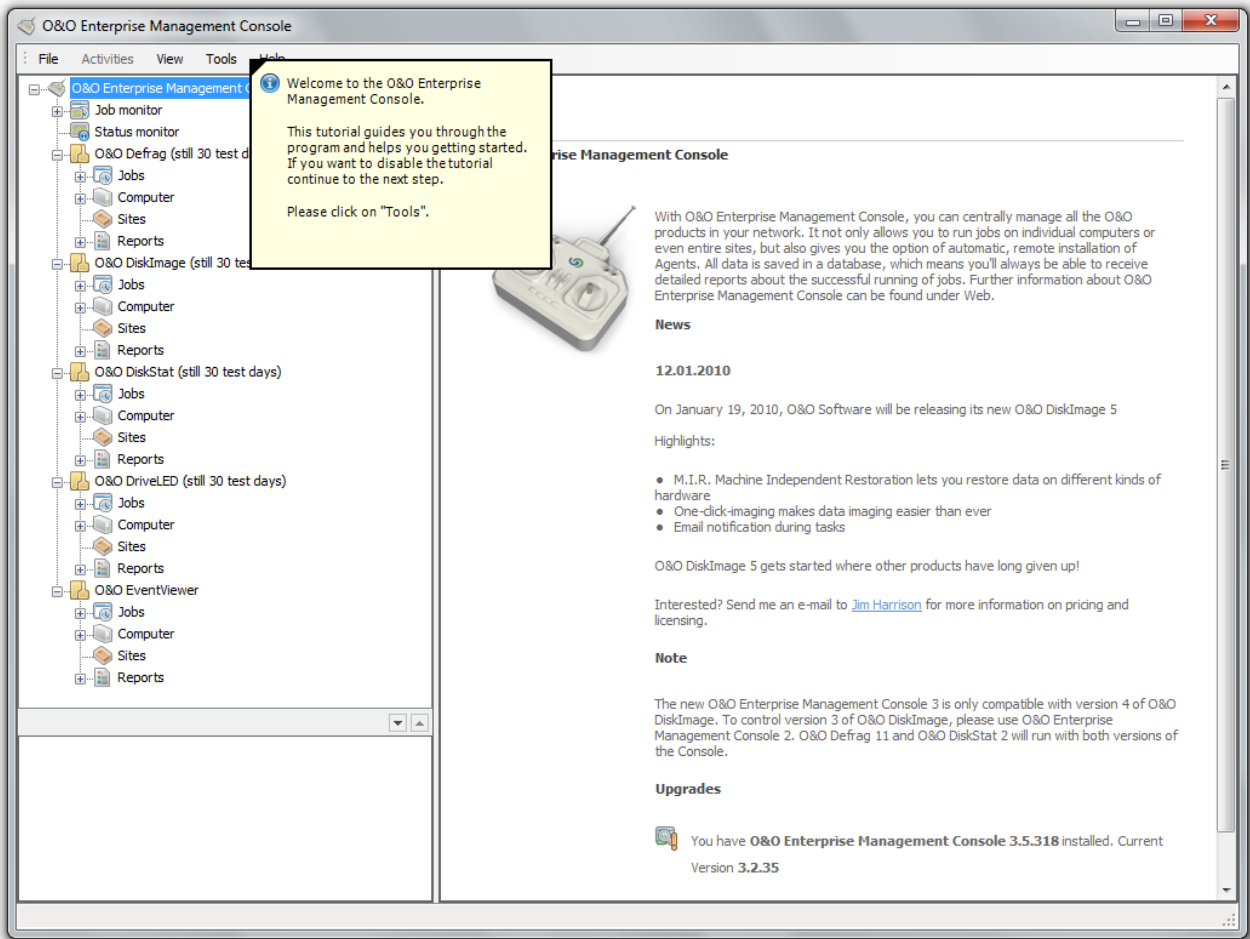
The following chapters explain the structure and functions of the O&O Enterprise Management Console.

## Definition of terms

A short explanation of the following terms will contribute to a better understanding of the documentation. Please use the charts "[General Communication Model](#)" and "[Functional Principle of OOEMC](#)" as an added help for understanding the text.

## OOEMC

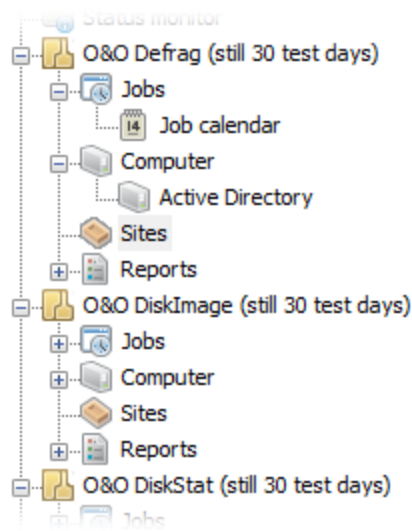
Abbreviation for O&O Enterprise Management Console, the graphical user interface. The term refers to a management program ("container") in which computers, programs and reports are structurally integrated.



Start page of OOEMC

## Module

A module is an O&O program integrated into OOEMC. This makes it possible to apply an O&O program across a network. It is listed in the navigation tree of OOEMC as program folder, e.g., O&O DiskImage or O&O Defrag.



Module folder in the OOEMC

### Control service

The OOEMC Control Service has the function of transferring or allocating jobs and installation instructions to the desired computer, i.e., the gateway agents, across a network. It controls communication between the database and the gateway agent of the network computer, allocates jobs and is responsible for remote installation. In doing so, it synchronizes with the Gateway agent on the computers in the network in cyclical intervals, to retrieve the newest reports on all Jobs.

### Gateway agent

The gateway agent is installed on the target computer during the remote installation of an O&O program. It communicates with the OOEMC Control Service and arranges for jobs to be run using the respective product agent (e.g., from O&O DiskImage). It also collects reports, on request, from the product agents and passes them onto the OOEMC Control Service.

### Product agent

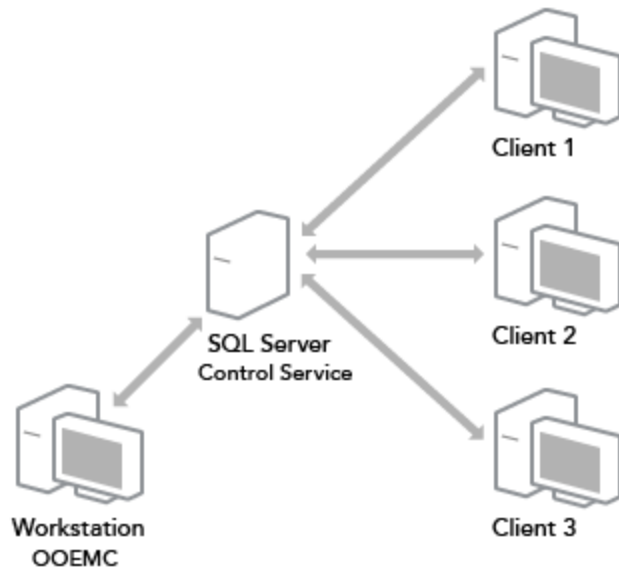
The product agent is a service of any O&O product, e.g., O&O DiskImage, which is responsible for running a job on the respective client.

## General communication model

Using O&O Enterprise Management Console (OOEMC), you'll be able to allocate and manage jobs for O&O programs across a network from a central location. OOEMC itself doesn't perform any managing functions but with it you can integrate network capable O&O programs, e.g., DiskImage, which are able to assume this function. The integrated O&O programs are called modules.

To put it simply, communication from your workstation computer to the network computer is carried out using your SQL Server and the Control Service. The Control Service communicates with the respective network computers (clients) on which jobs can be run (see the chart "General Communication Model").

**Note:** the chart shows only one possible application of OOEMC. The Control Service (CCS) can also be installed on a separate computer. Also, the graphical interface of the OOEMC can also be located on the Server, where the control service is located.

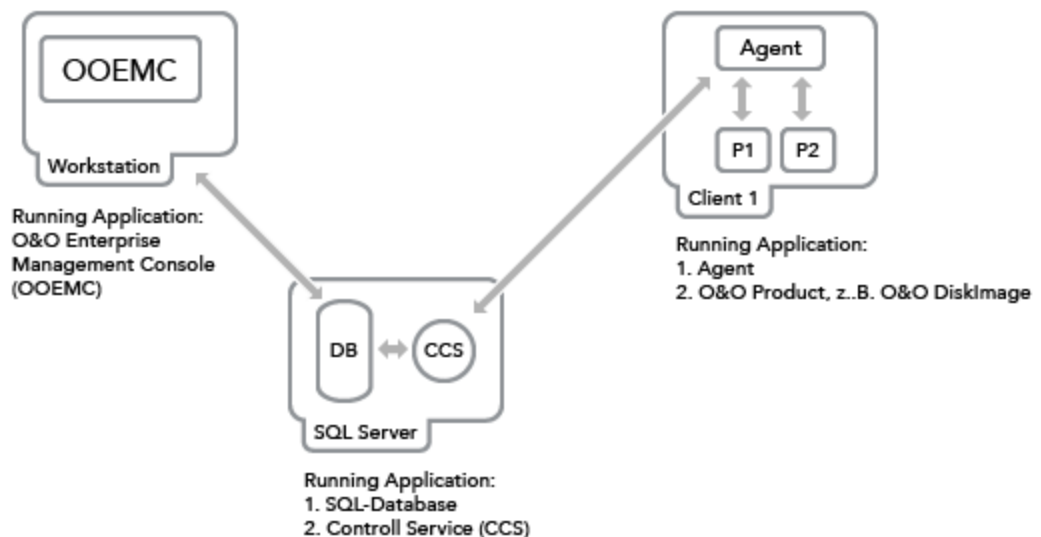


General communication model

## Functional principle

Communication from your workstation computer to the network computers is carried out over your SQL database and the OEMC Control Service. The Control Service communicates between the SQL Server and the gateway agents of the respective network computer (clients). The gateway agent is automatically installed on the client during the remote installation of an O&O product and receives jobs from the Control Service. The gateway agent then passes these jobs onto the product agent, e.g. O&O DiskImage, which is responsible for running a job, and in turn collects reports about how the job was run (see chart "Functional principle of OEMC").

**Note:** the chart shows only one possible application of OEMC. The Control Service can also be installed on a separate computer. OEMC can also be installed on the server in a similar way.



## Functional principle of OOEMC across a network

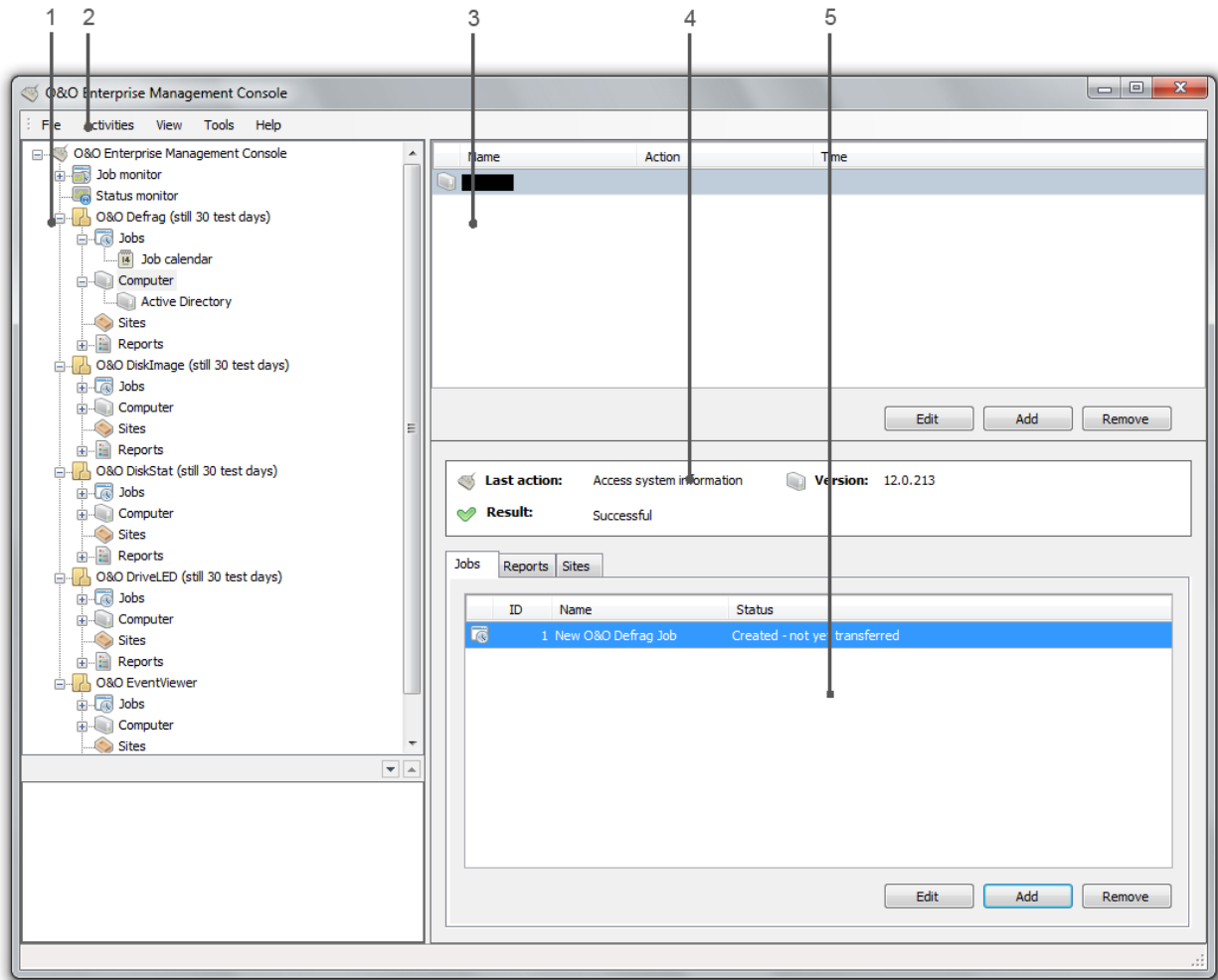
### Design of OOEMC

The design of OOEMC is very clearly laid out and provides quick access to both the module and the program features.

Module directories and more sub directories are located in the left navigation zone of the O&O Enterprise Management Console:

- **Job monitor**- displays all created Jobs.
- **Jobs calendar** - displays all jobs in a calendar overview.
- **Status monitor**- displays the Jobs processed by the control service and their status.
- O&O module folder, e.g. O&O Defrag, O&O DiskImage or O&O DiskStat, include more sub folder
- **Jobs** – includes a Job Assistant for planning the time-controlled running of a job on selected computers or sites.
- **Reports** – the folder contains all status reports about the jobs.
- **Computer** – includes all the computers you've added to a network in order to install an O&O program like O&O DiskImage.
- **Sites** - includes all the sites you've added to a network in order to install a program like O&O DiskImage onto all the site's computers.
- **Menu bar**- includes more menus like folder, view, Tools and Help.
- **File** - Using the File menu, you can create new jobs and add a new computer or site.
- Under **View** you can customize the program interface and run updates.
- Under **Tools** you can choose further options and module options. In addition, you have access to maintenance and repair options and database imagings.

## Design and functionality



Overview of the program interface

1. Navigation structure with module folder
2. Menu bar
3. Program window in the upper right side, here you can see created Jobs.
4. Status window, offers information on the Job processing.
5. Right lower program window, here displayed with the computer, where the Job is to be run.

## System requirements

**Note:** Please pay attention as well to the system requirements of the Microsoft SQL Server 2005 Express (SQL Server Express).

**Note:** The O&O Enterprise Management Console tested and developed with the most current and available Microsoft operating system and each corresponding Service Pack (with reference to the publishing date of O&O EMC).

- The system requirement of each operating system have to be fulfilled
- Ca. 1 GB free hard disk space for the whole package (SQL Server Express and OOEMC)
- Windows® 7, Vista®, XP, Server 2003, Server 2008 and Server 2008 R2 (all Editions\*, from Windows® XP/Server 2003 respectively supports 32-Bit/64-Bit)

\* Core installations are excluded

The O&O Enterprise Management Console requires the installation of the .Net Framework 3.5 on the computer, and the .Net 2.0 Framework on the target computer. If the target computer do not have a connection to the Internet, you will need at least .Net 2.0 Framework with the Service Pack 1 installed.

The O&O Enterprise Management Console supports only SQL Server 2005 and SQL Server Express 2005 with the installed Service Pack 2.

**Note:** For Windows 2008 R2 the Dot Net Framework needs to be enabled through a command in the command line:  
`servermanagercmd -i NET-Framework-Core`

### Permissions

To install and register OOEMC, you must be a member of a local administrator group or possess comparable permissions. Domain Administrators normally already possess these permissions. You do not need any administrator permissions to start OOEMC.

## Installation

In order to work with O&O Enterprise Management Console (OOEMC) across a network, you'll have to install all the components included in delivery and possess the respective O&O product licenses. Otherwise, you will have access to the test versions of the modules for up to 30 days.

You can either install the program by using the CD included in your package:

The installation contains the following components:

**OOEMC** - The graphical user interface can be installed on either your workstation computer or your server. Select Control service in the selection dialogue and then follow the installation dialogues.

**OOEMC control service** - The OOEMC control service may only be installed once. It should be installed preferably on a Server because it is designed to be continuously active. If installed on a workstation computer, jobs might not be allocated or remote installations performed.

**SQL Server Express** - can be installed optionally when no Microsoft SQL Server is available. We recommend to install the SQL Server Express on a server so that it can be contacted at any time by the Control Service and OOEMC.

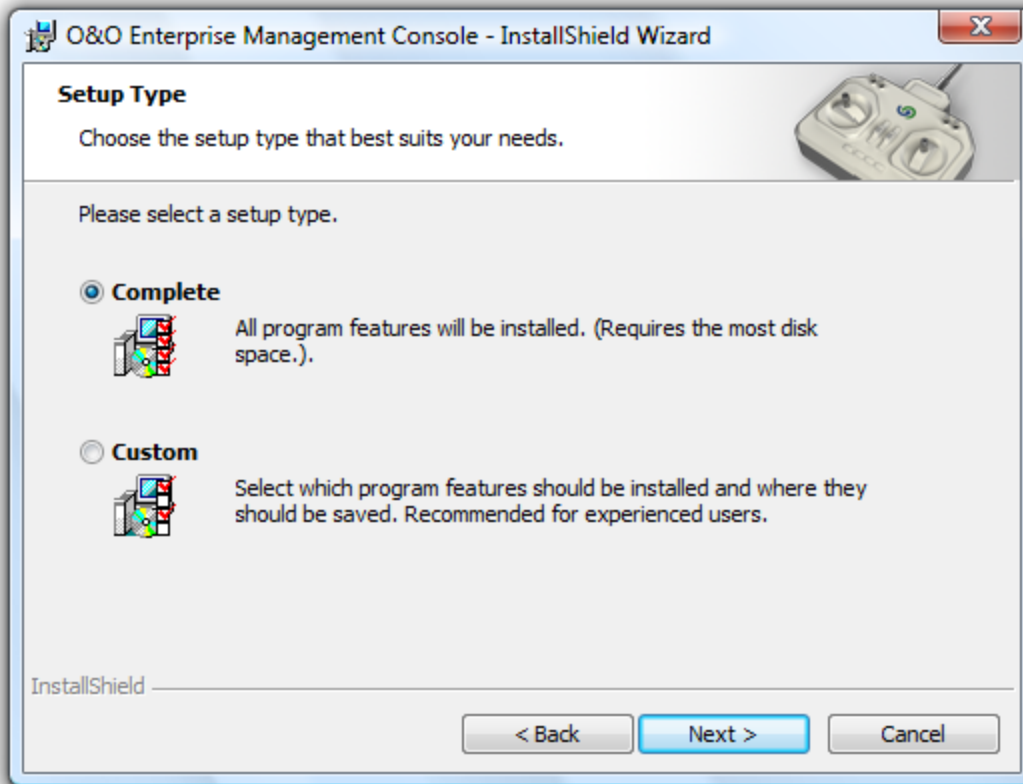
**Note:** If you are installing the Control Service on a computer without the graphical user interface, you will be prompted to enter the connection to the database when the installation is completed. This step is absolutely necessary in order for the Control Service to function correctly.

### Starting installation

1. Start the computer on which you want to install the SQL Server Express.
2. Login as local administrator or as a user possessing comparable permissions.
3. Click the installation file containing O&O Enterprise Management Console and follow the steps in the installation dialogue. Depending on whether or not you already have the Microsoft SQL Server 2005 available, you can choose between installing with or without the Microsoft SQL Server 2005 Express.

If you are choosing to install **with** the SQL Server Express, you will have to enter the name of the computer on which it should be installed.

Once the installation of the SQL Server Express is completed, you can choose between **Complete** and **Customized installation**.



You can retrieve information over the installation components

## Customized installation

The installation of individual components (Customized installation) is recommended when you wish to install the SQL Server Express and OOEMC on separate systems. This might be, if you install OOEMC on your workstations and the SQL Server Express on the Server.

### Installing OOEMC

- Select **O&O Enterprise Management Console** in the selection dialogue and then follow the installation dialogues. When prompted, enter the server name and the instance name of the SQL Server.
- When prompted, restart your computer.

**Note:** O&O Enterprise Management Console can be installed on either your workstation computer or your server. Multiple installation of the user interface is also possible, for example, on a number of workstations and your server.

### Installing the OOEMC Control Service

- Select **Control service** in the selection dialogue and then follow the installation dialogues. When prompted, enter the Server name and the instance name of the SQL Server.
- When prompted, restart your computer.

**Note:** The OOEMC Control Service may only be installed once. It should be installed preferably on a Server because it is designed to be continuously active. If installed on a workstation computer, jobs might not be allocated or remote installations performed.



## Complete installation

All the components (OOEMC and OOEMC Control Service) will now be installed consecutively. Follow the dialogues and when prompted, enter the server name and the instance name of the SQL Server.

When prompted, restart your computer.

**Note:** O&O Enterprise Management Console can be installed on either your workstation computer or your server. Multiple installation of the user interface is also possible, for example, on a number of workstations and your server.

## Notes on the application of one's own SQL Server

If you do **not** use the included SQL Server, but use your own SQL Server, then you have to consider the following:

- Only SQL Server 2005 may be used for the OOEMC.
- The SQL Server has to run with mixed authentication modes (Mixed Mode). You can modify the settings while installing the SQL Servers or in the SQL Management Studio.
- If the SQL Server is running on another computer than where the OOEMC is installed, you will have to modify the Firewall of the SQL computer so that a connection (e.g. network connection) can be established. You could for instance activate TCP/IP as a means of communication. To do that you have to normally define the TCP Port 1433 as an exception.

## Enter license

**Note:** In order to activate the O&O Enterprise Management Console after installation or at a later time, you must possess a valid license key. This license key is also called a registration code, serial number, or product ID.

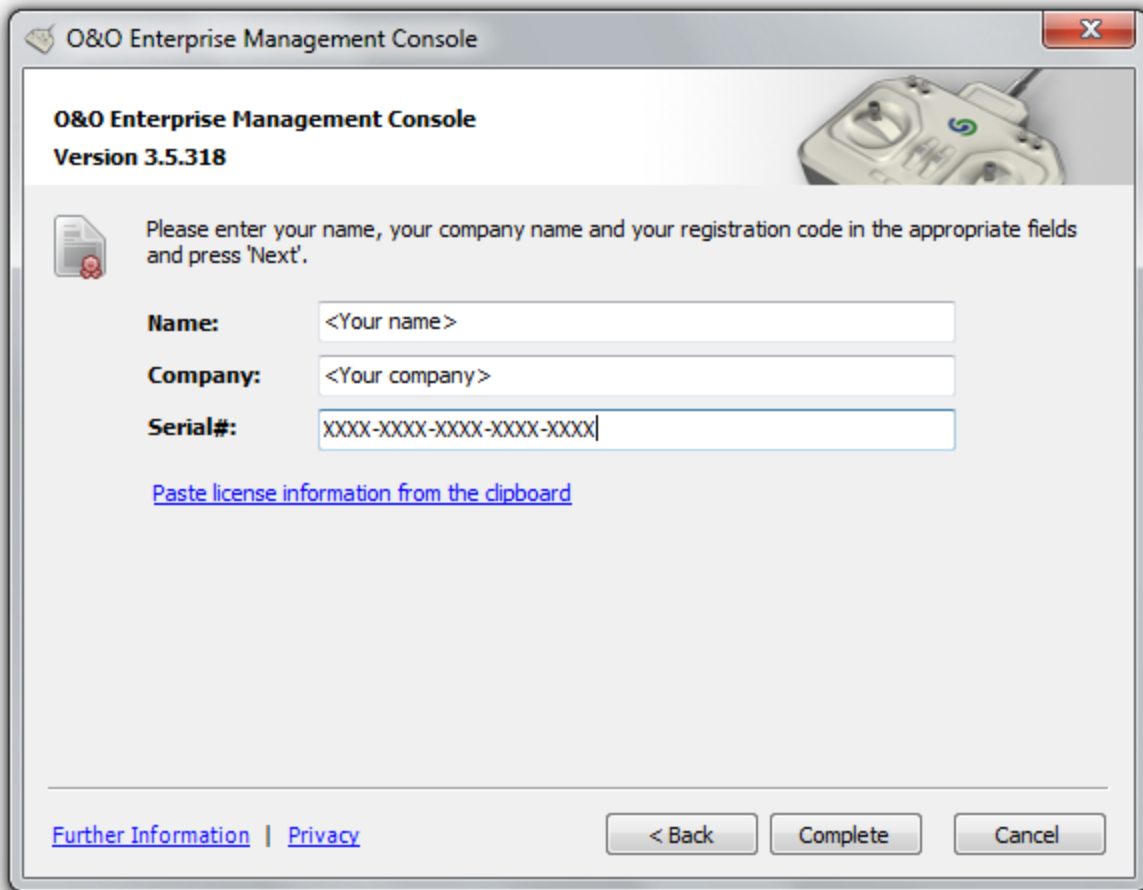
The dialogue for registration always appears automatically at the start to guide you if you are using an unregistered version or have entered the registration code incorrectly.

The registration wizard allows for a simple registration process.

When you select the option **I want to enter my license**, a dialog box will appear where you can enter the registration code you received when purchasing the software.

- If you have purchased the software **as download**, please enter the license information ("Name", "Company" and License key), just as they are written in the confirmation E-Mail you received.
  - If you have purchased the software as **Box version**, please enter the license key as it is written on the license card included. In addition, please enter your name and if needed your company.
1. Please make sure that you do not confuse the digit "1" with "l" or enter any empty spaces where they don't belong.
  2. Press **Next** to save the registration data or **Cancel** to leave the dialog window without saving the data.
  3. When you have correctly entered the license code you will receive a confirmation in the dialog window.

Should you run into any problems when entering your registration code, please contact our Support Team.



Enter the license key

## Use the test version

You can now test the O&O Enterprise Management Console (OOEMC) for 30 days free of charge and without any obligations. Each module can be allocated to an unlimited number of computers. After the test phase you will need the corresponding licenses for each module and the OOEMC to continue using it.

If you want to continue using the OOEMC after the test phase, don't hesitate to contact us. We will gladly offer our assistance on how to apply the OOEMC in your company.

## Uninstall

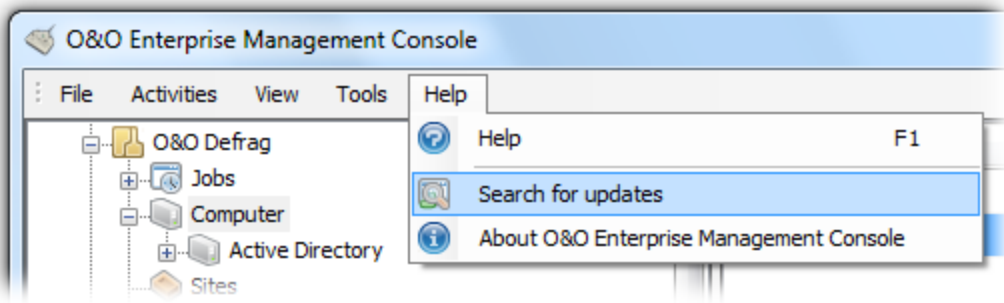
To remove O&O Enterprise Management Console from your computer, please follow the steps below:

1. Open the Control Panel in the Windows start menu and then click on **Software**.
2. Click on **O&O Enterprise Management Console** from the list of installed software and then click on **Add/Remove** or on **Uninstall**.
3. Confirm the uninstallation.

## Updates

To make sure that you are using the newest version, click on **Search for updates** in the menu bar.

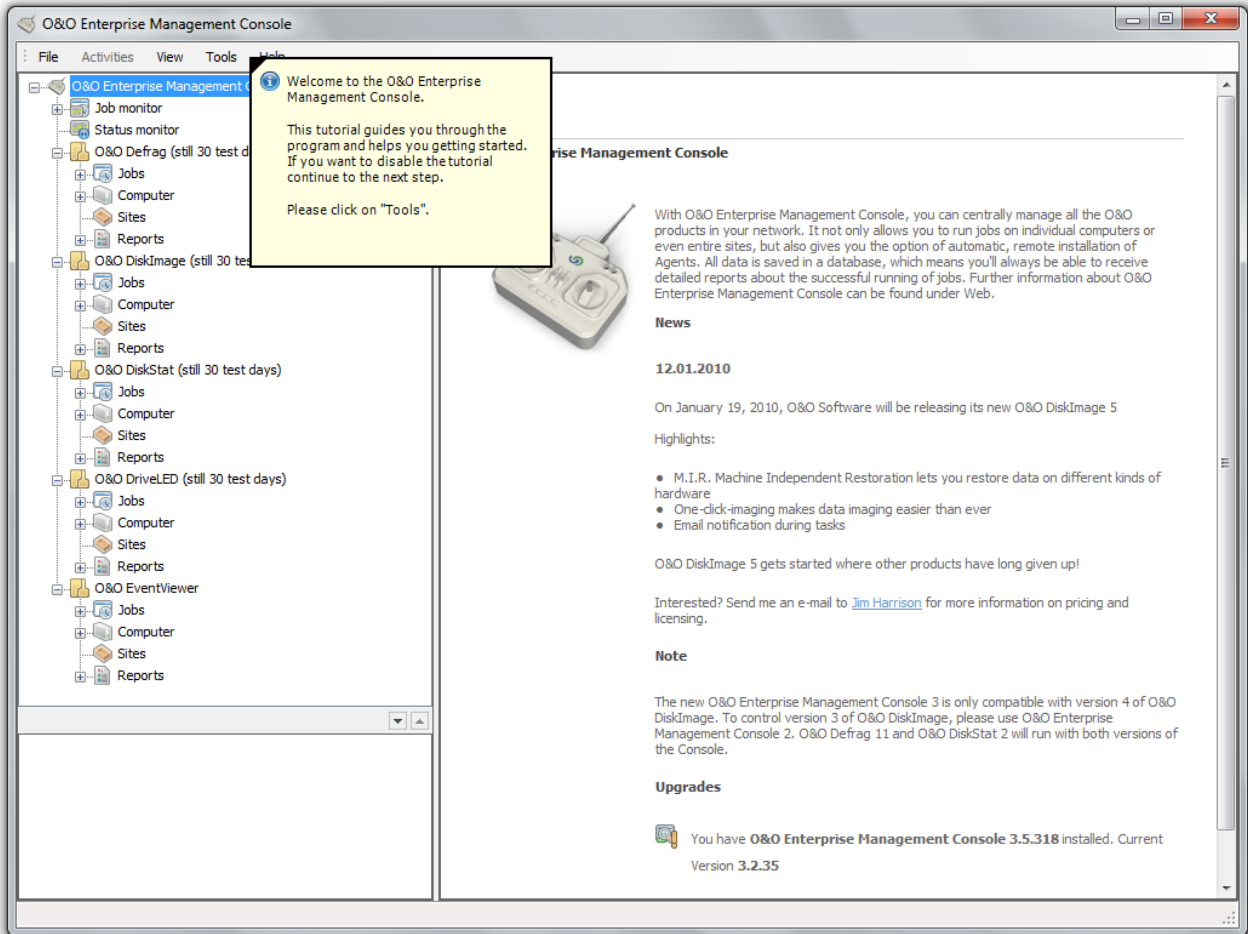
## Installation



Updates

# Getting started

After it's successfully installed, you can open OEMC on your workstation from either the desktop icon or using the path **Start/All Programs/O&O Software/O&O Enterprise Management Console** . You can access **Help** by using either the Help button or pushing **F1** .



Start page of O&O Enterprise Management Console (OEMC)

## Step 1: Preparing the target computers

Before you begin assigning jobs in the network or performing remote installations, you have to open certain ports or port ranges of the firewall on the target computers (clients). Otherwise the computers will not be contacted and you will receive error notices in reports.

If you're using a firewall from another manufacturer than Microsoft, check with the respective program's Help.

You have to open (or allow these exceptions) the following ports through the Windows Firewall settings to allow the remote installation and for assigning jobs. For more information read chapter [Allow exceptions](#).

**Hint:** you can find the settings for the Windows Firewall on your computer under: **Start/Control Panel/Security Center/Windows Firewall/Change settings/Exceptions**.

## Windows XP

## Getting started

	For Remote Installation	For Connection/Allocating Jobs/ Reports
Port/Port Range	File and Printer Sharing (TCP 139, TCP 445, UDP 137, UDP 138)	50400
(Exceptions)	Remote Management*	50401 (Optional, only necessary when using SSL Encryption)
	Windows Management Instrumentation - WMI (TCP/135)	50300 (Optional for O&O Defrag)

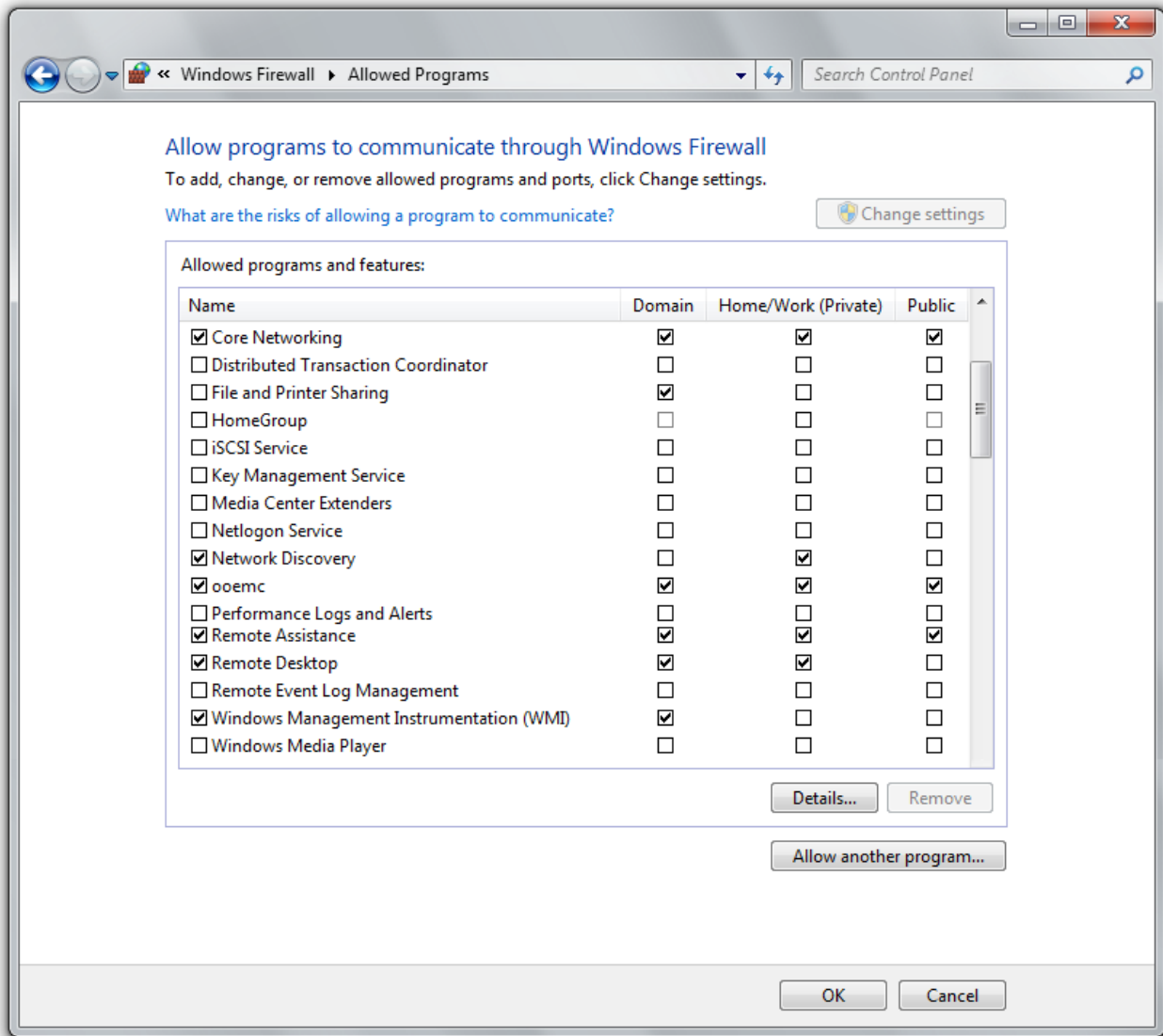
**\* Note:** If you are using Windows XP Service Pack 2, you have to enter the following command in the command line to enable the Remote Installation, since there are some security restrictions imposed by the operating system:

```
netsh firewall set service type = remoteadmin mode = enable
```

More information can be retrieved from the Internet under Microsoft TechNet. Specifically, if you look for the article „Enable or Disable the Remote Administration Exception“.

## Windows Vista und Windows 7

	For Remote Installation	For Connection/Allocating Jobs/ Reports
Port/Port Range	File and Printer Sharing (TCP 139, TCP 445, UDP 137, UDP 138)	50400
(Exceptions)	Remote Management	50401 (Optional, only necessary when using SSL Encryption)
	Windows Management Instrumentation - WMI (TCP/135)	50300 (Optional for O&O Defrag)



Firewall settings

### Allow exceptions

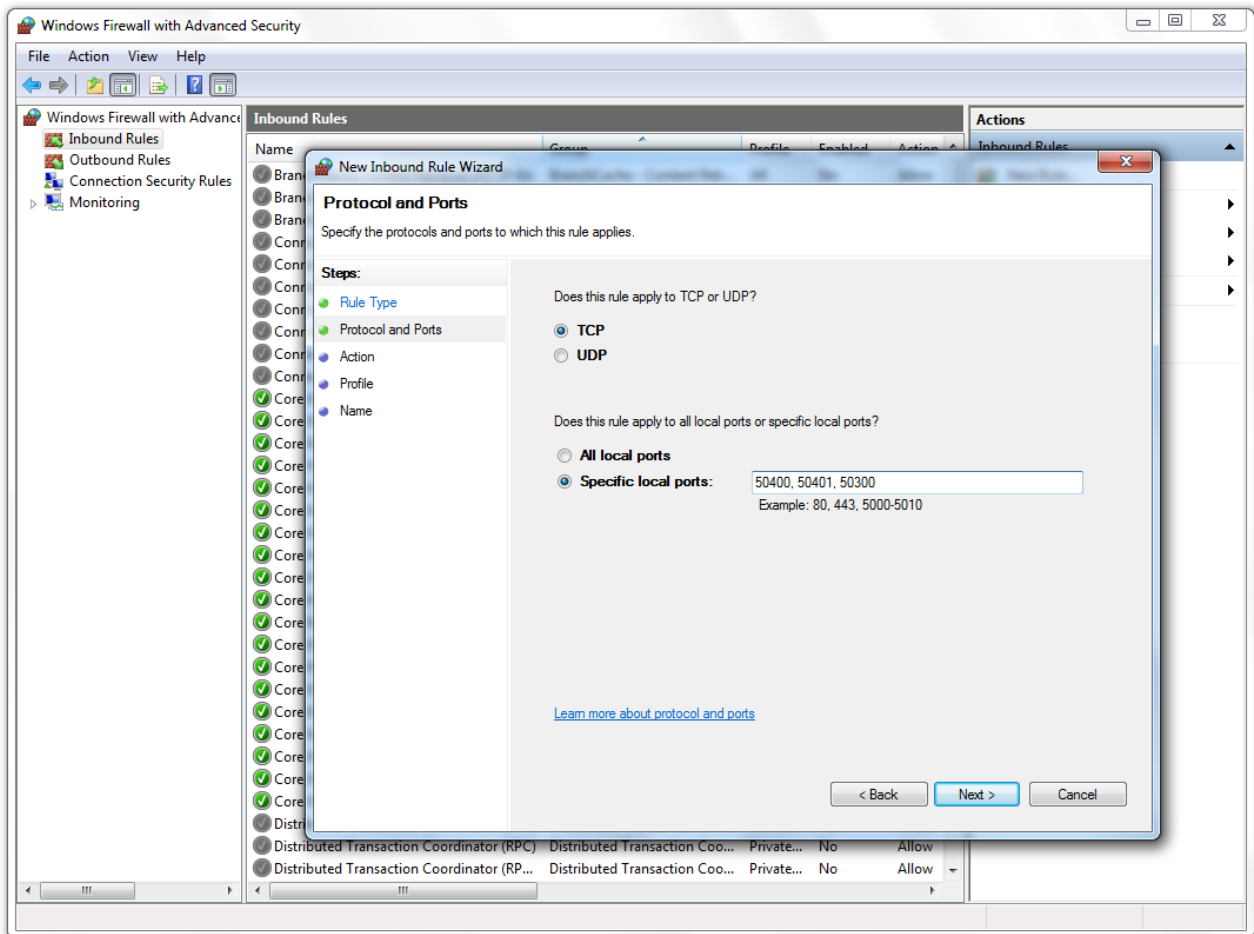
Before being able to run activities in the network with the OOEMC, you need to specify certain settings on the Firewall on the target computer. If you haven't made any changes to the firewall settings, please bear the following steps in mind while defining exceptions and opening ports. Here are the examples for Windows 7 as well as Windows Server 2008:

1. Open the Windows Firewall in the Control Panel.
2. On the left, click on **Allow a program or feature through Windows Firewall**.
3. Place the following control checks in the column **Domain**. The computer needs to be in a domain for it to display the column: **File and printer sharing**, **Remote Service Management** and **Windows Management Instrumentation (WMI)**.

In addition, you need to create and share further ports.

## Getting started

1. Open the Windows Firewall in the Control Panel and click on **Advanced settings**.
2. To create the needed ports for the OOEMC, click on **Inbound rules** on the left of the dialogue.
3. Afterwards, click on **Activities** on the left and then on **New Rule**.
4. Then select **Port** and follow the dialogue with **Continue**.
5. In the text field **Specific local ports** enter <50400, 50401>, and confirm with **Continue**. If you will use O&O Defrag, create the additional port <50300>.
6. Please leave the default setting **Allow the connection** in the next dialogue enabled and click on **Continue**.
7. Enable all three checks in the next dialogues (Domain, Private, Public), if these are not checked by default and click on **Continue**.
8. Now enter a fitting name, e.g. OOEMC, and optionally a description.
9. Save the settings with **Finish**.



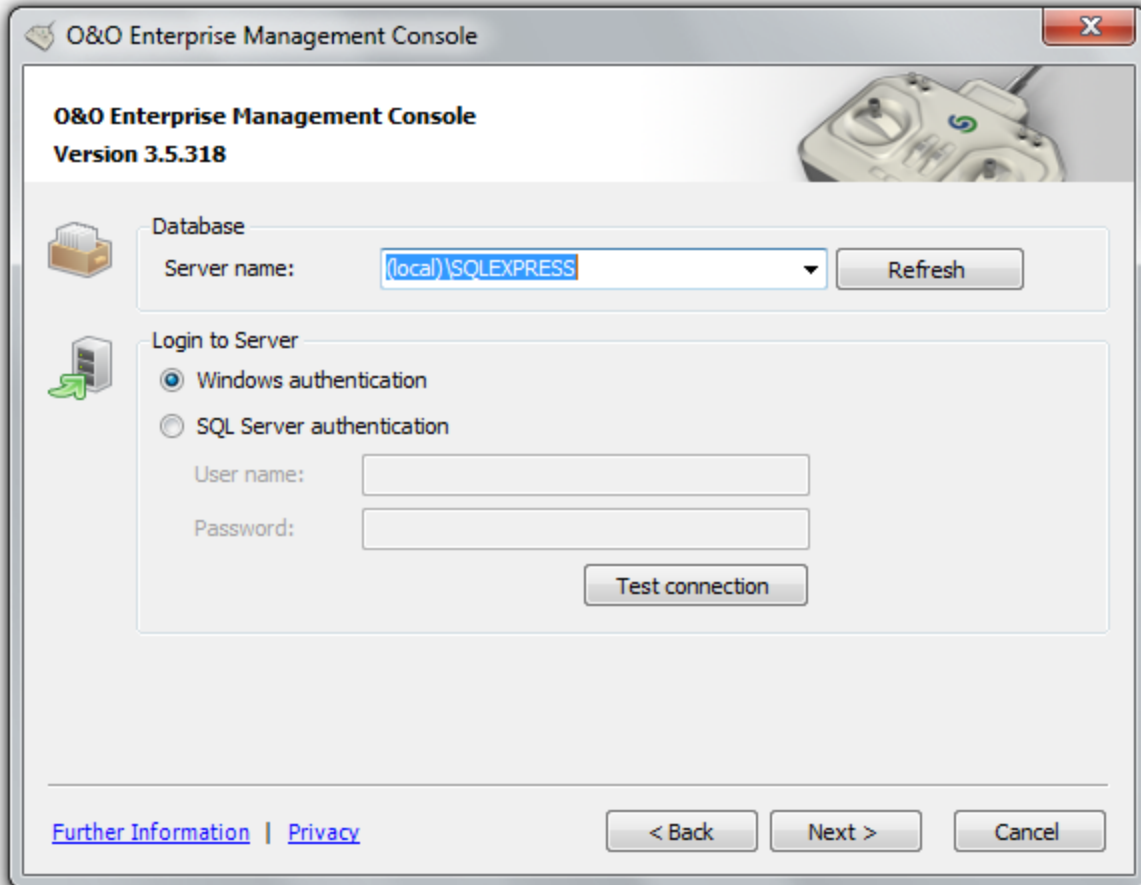
Windows Firewall: Define exceptions

## Step 2: First start after the installation

The Database Wizard will appear at the initial start of O&O Enterprise Management Console or following deletion of the database from the user interface. Here you'll be able to construct a new database or select one that is already available. If you're using an older version of OOEMC, it will be automatically updated to the latest version without any loss of data.

## Getting started

- For designing the database, enter the server name and the name of the database, e.g., Server1\SQL-EXPRESS. If the database is located on the same computer as the Enterprise Management Console, please enter (local)\SQLEXPRESS.



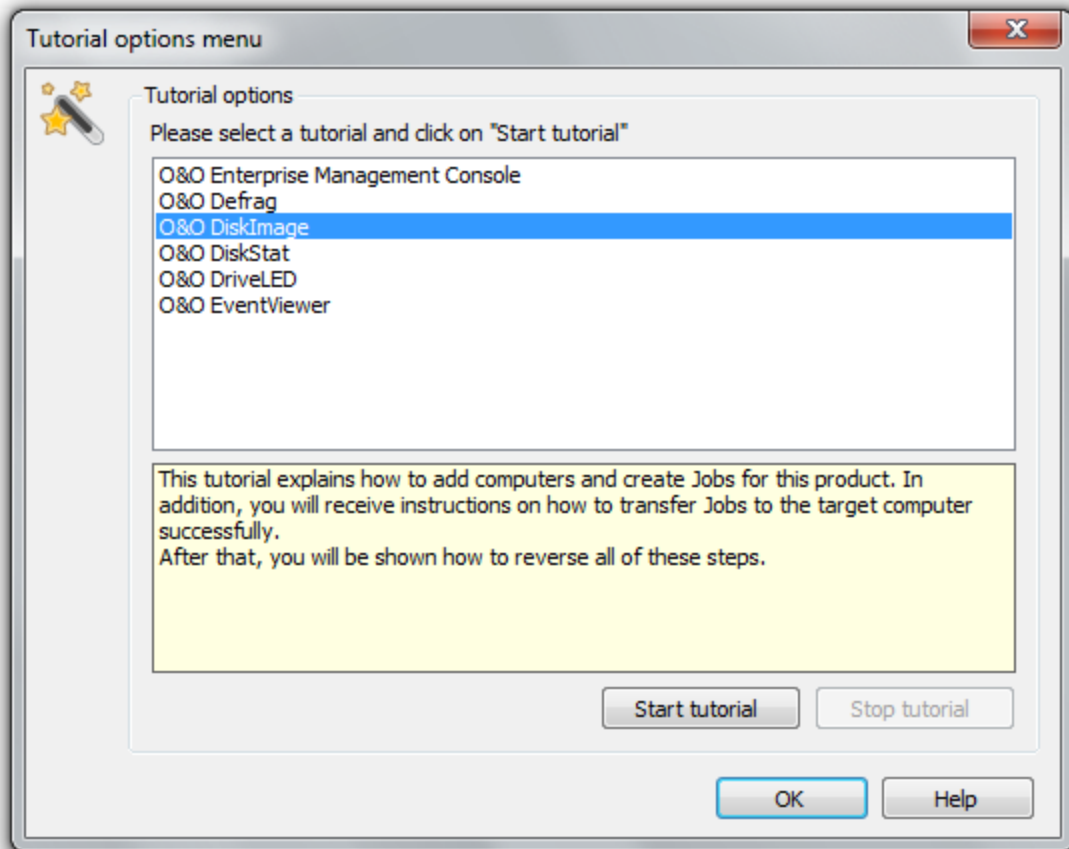
Entering database connection

## Step 3: Tutorial

You can now follow the tutorial, which will guide you through the most important functions of the OOEMC. As soon as it finishes, you can start another tutorial on the module of your choice to facilitate the work with this module.

You can also go through the tutorials of the OOEMC and the modules at a later time under **Tools/Tutorial options**.





Tutorial options menu

## End tutorial

Under **Tools/Tutorial options** you can end the currently running tutorial with **Stop tutorial**.

## Step 4: Setting up computer permissions/remote installation

From your own workstation, you can conveniently install O&O programs remotely on any number of computers across a network.

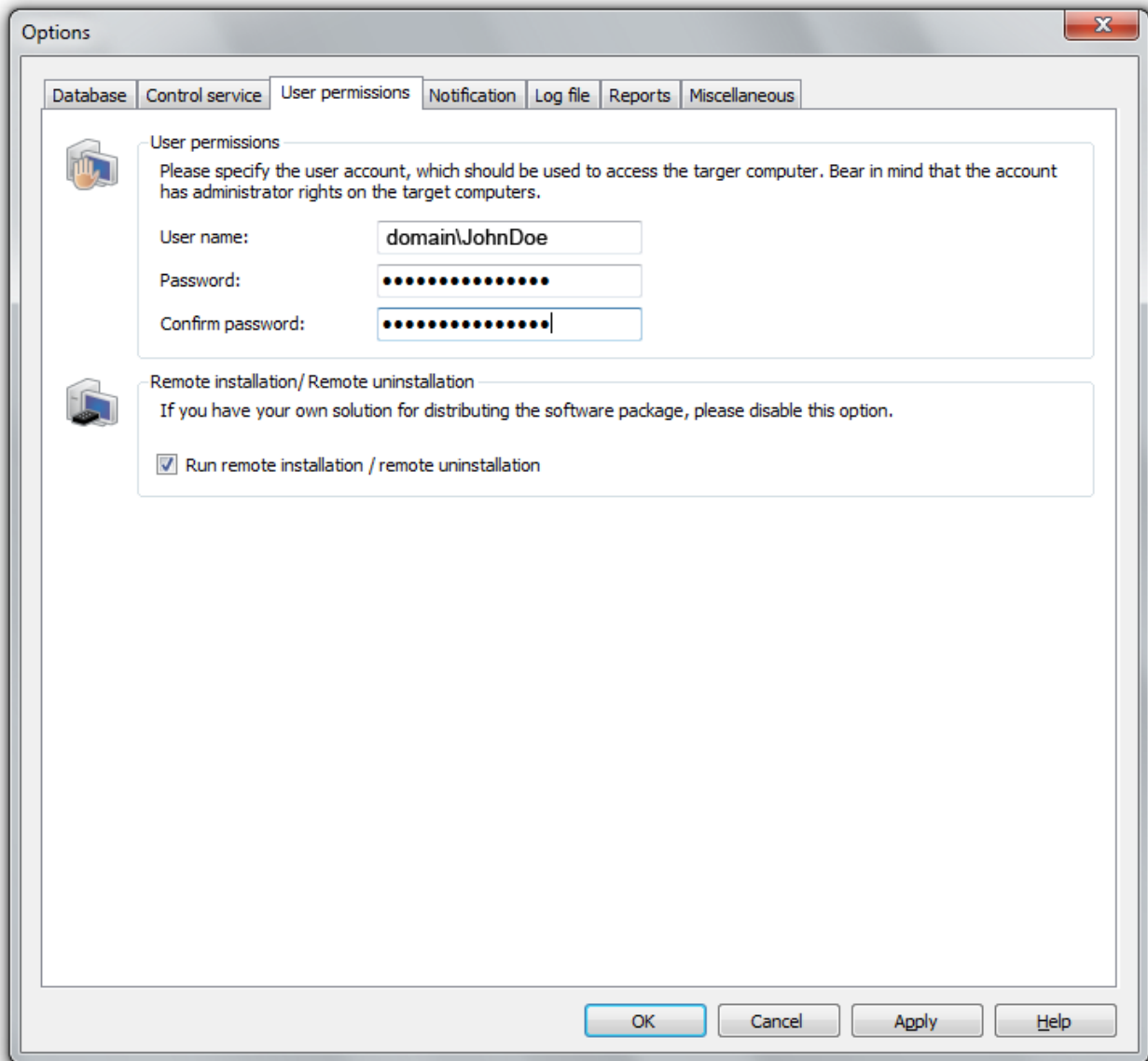
To execute a remote installation on the Clients, you must still enter the name of the user whose account is being used for remote installation.

If you have your own solution to distribute the software package or want to continue with the installation manually, please disable the function **Remote installation/run remote installation**.

In this case, the OOEMC will not allow changes in the software of the Clients.

**Note:** Make sure you have the required administrator permissions on the target computer! Otherwise the remote installation will fail.

- To do this, under **Tools/Options** click **Computer permissions** and enter the user account for the computer permissions in the format **Domain\User name**.



Entering the user account

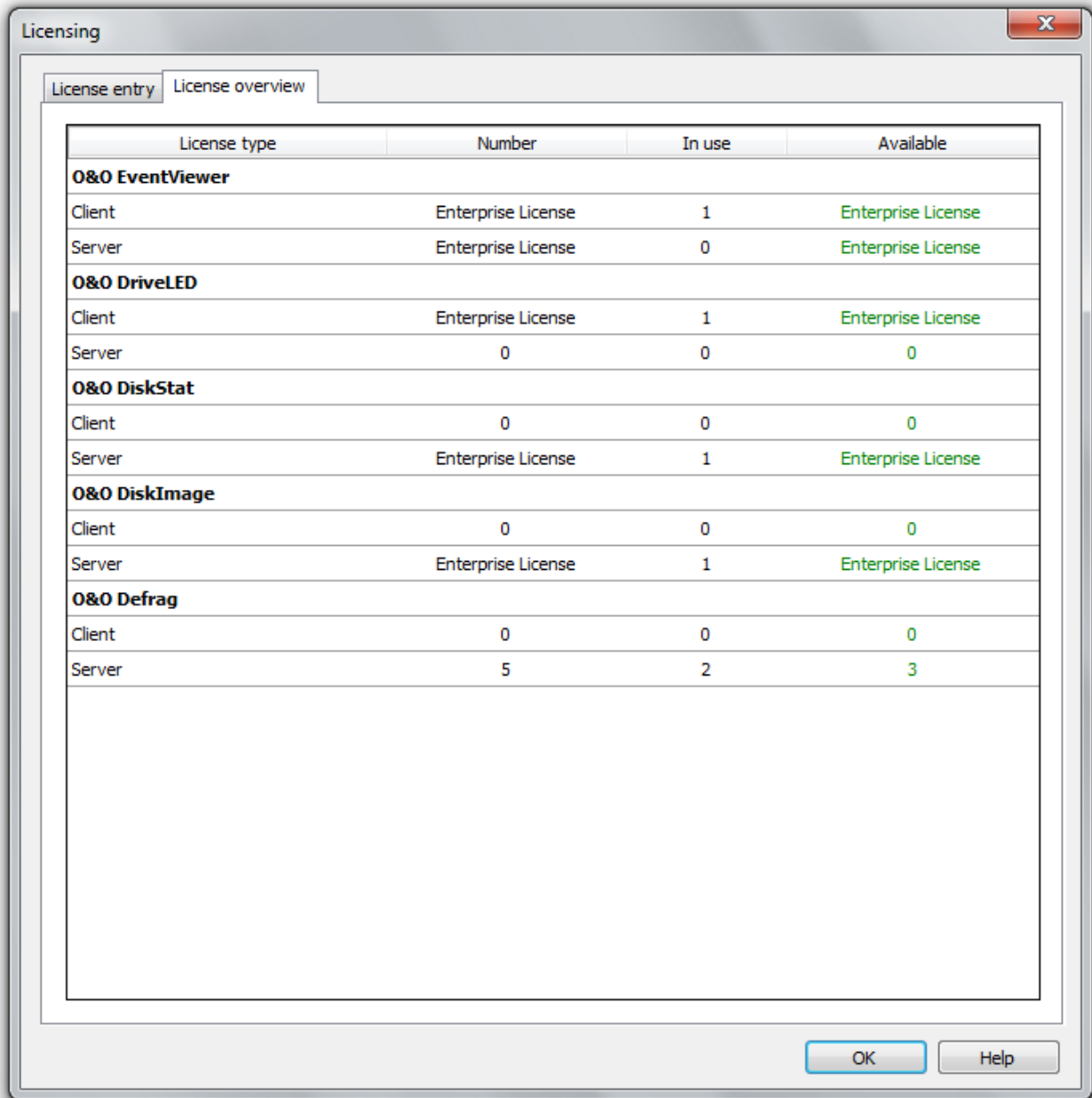
**Note:** If the target computer has an active Windows Firewall, you have to open the Port ranges "File and Printer Sharing" (TCP 139, TCP 445, UDP 137, UDP 138) and „WMI" (TCP/135) for remote installation. You can read more about this in the chapter "Preparing the target computer." If you're using a firewall from another manufacturer, consult the program's own Help site.

## Step 5: Manage licenses

If you want to install an O&O program in the network you must have access to the corresponding license key or possess a valid test version. You received the license key upon purchase of the OOEMC. If all licenses are used up, you can buy more from us or our partners. Special license agreements allow for the unlimited use on any computer within the company. If you need additional licenses, or have questions concerning our license program do not hesitate to contact us: [sales@oo-software.com](mailto:sales@oo-software.com)

## Getting started

Licensing gives you an overview of available and used licenses. For Pro Client or Server you will need a corresponding license key per client or Server. As soon as you try to add a new computer to the list, a message will appear letting you know if you still have enough licenses. It would be best to enter the license key before creating the computer list.



The screenshot shows a window titled "Licensing" with two tabs: "License entry" and "License overview". The "License overview" tab is active, displaying a table with the following data:

License type	Number	In use	Available
<b>O&amp;O EventViewer</b>			
Client	Enterprise License	1	Enterprise License
Server	Enterprise License	0	Enterprise License
<b>O&amp;O DriveLED</b>			
Client	Enterprise License	1	Enterprise License
Server	0	0	0
<b>O&amp;O DiskStat</b>			
Client	0	0	0
Server	Enterprise License	1	Enterprise License
<b>O&amp;O DiskImage</b>			
Client	0	0	0
Server	Enterprise License	1	Enterprise License
<b>O&amp;O Defrag</b>			
Client	0	0	0
Server	5	2	3

At the bottom of the window, there are "OK" and "Help" buttons.

Overview of licensing

### More:

[Entering license key for module](#)

### Enter license key for module

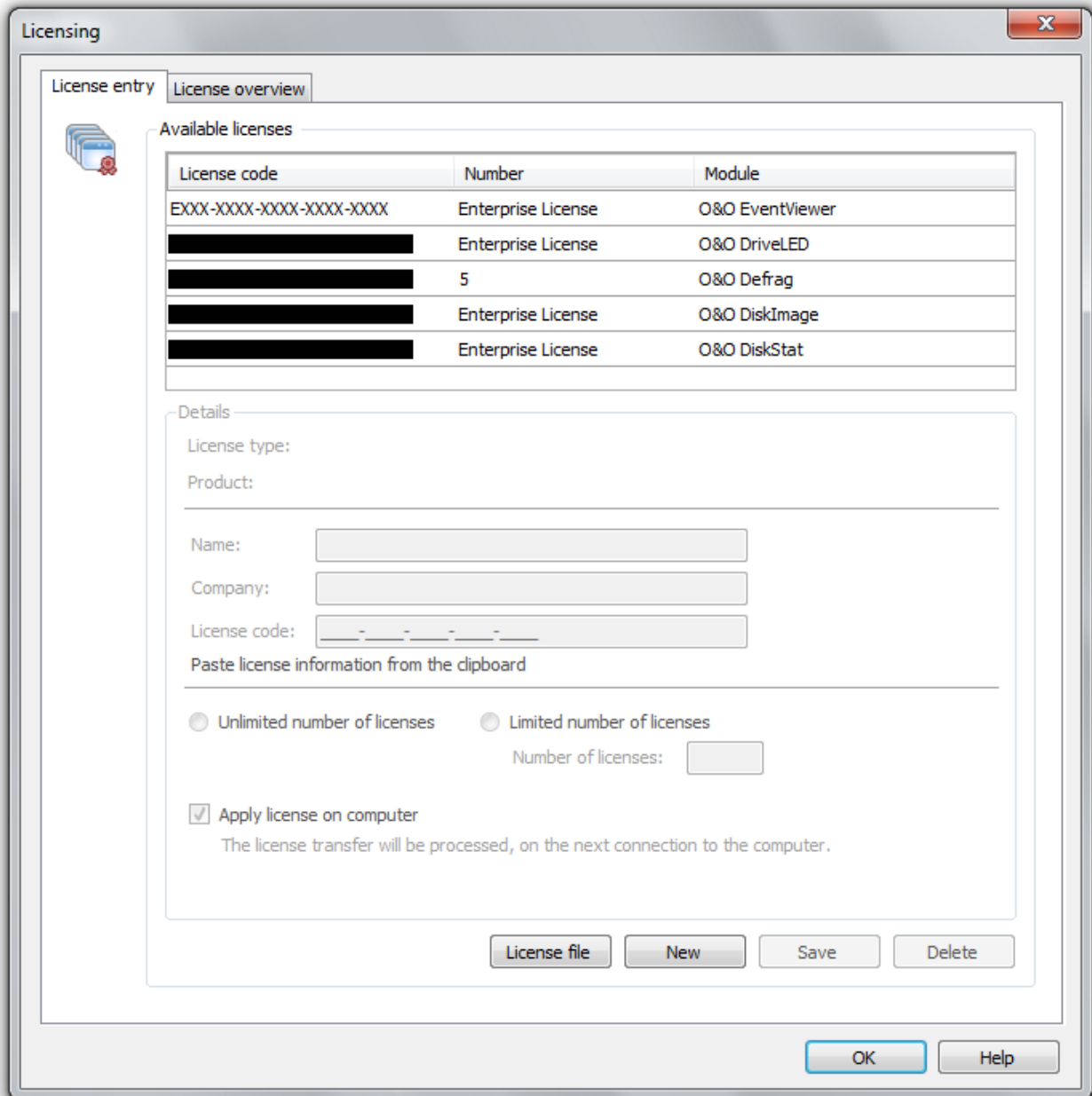
To get to the license management click on the Menu Bar under **Tools** on **Licensing**.

## Getting started

1. Click on **New**, to enter a new license.
2. The OOEMC recognizes the module automatically based on the license information.
3. You can now enter the license information in the license dialogue. Make sure to not mix up the number "1" with the letter "l" and to not enter any empty spaces.
4. If you select the option **Apply to computer** the licensing will automatically be transferred to the target computer and you do not have to enter it manually on each computer.
5. If you have purchased an Enterprise License with a limited amount of licenses the number will be noted automatically below.
6. After entering your license data successfully you can add new computers to your list. The remote installation and the licensing (if specified) will be executed automatically on the target computer.

Alternatively, you can request a license file (\*.xml) with all your acquired licenses and enter them comfortably through the OOEMC. Please follow the steps below:

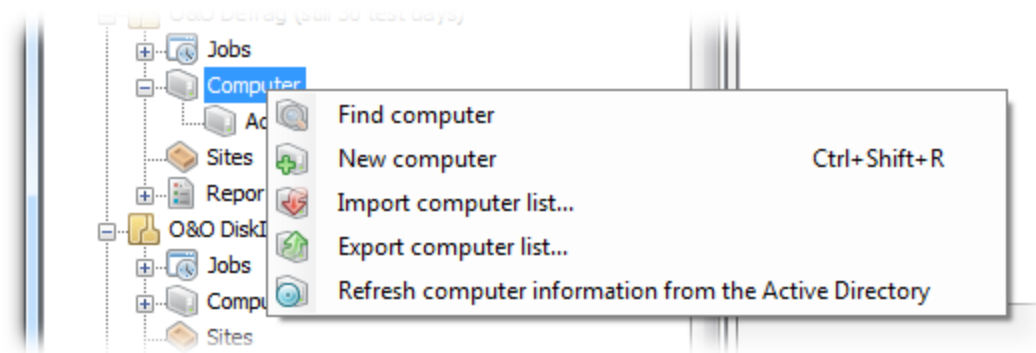
1. Store the license file (\*.xml) on your computer, e.g. on your Desktop.
2. In the licensing dialogue click on **license file** and open the XML file. Afterwards, all available licenses will be displayed (Workstation and Server Editions).
3. Select the license from the list by enabling the control check and confirming with **OK**.
4. If you have purchased an Enterprise License with a limited amount of licenses, please enter the number of licenses in the form. Confirm your selection with **OK**.
5. If you select the option **Apply to computer** the licensing will automatically be transferred to the target computer and you do not have to enter it manually on each computer.
6. After entering your license data successfully you can add new computers to your list. The remote installation and the licensing (if specified) will be executed automatically on the target computer.



Entering license key for module

## Step 6: Add new computer

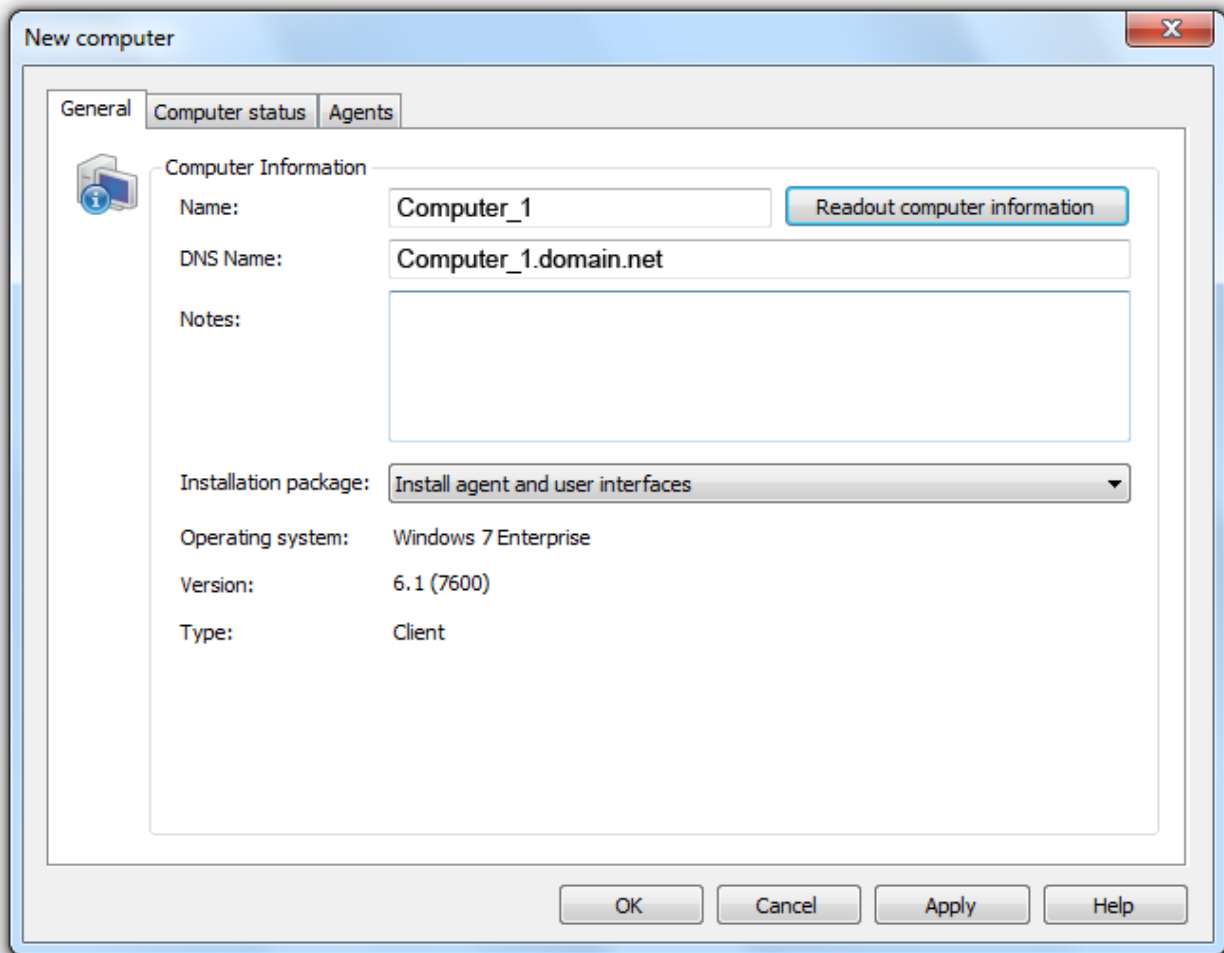
If the data for accessing the computer are entered, the computers should be added to the OOEMC. You can add an unlimited amount of computers to the OOEMC in the network, if your network includes an Active Directory (AD). You will find the appropriate functions by right-clicking. When doing so, please observe the terms of your license. In the menu list under **Tools/Licensing** you'll be able to enter your license key. You could, for example, add up to 25 computers to the computer list if you have a 25-seat license.



Right-click: computer

1. To integrate a new computer into OOEMC, right-click in each module folder on **computer** then on **New computer**.
2. Enter either the computer name and the DNS name, or just the computer name, if the computer name is clear, and click **readout computer information**. At that point, the DNS name will be automatically entered.
3. Confirm your entries with **OK**. After that the computer will be added to the computer list.
4. The OOEMC will now try to run an installation of the computers. You recognize this in the lower section of the OOEMC (transmission window). If you want, you can also click on the status monitor in the navigation tree.
5. You will be informed on the success of your Job under **Reports** and in the computer view. For this select the desired computer and click on **Reports**. In addition, you can inform yourself on the current state of the Job execution through the status monitor.

**Note:** when you click **Readout computer information** OOEMC attempts to contact your domain controller and to map the computer along with its organizational unit structure. While doing so, a connection will be made to the domain controller, and the DNS and full computer name will be read out.



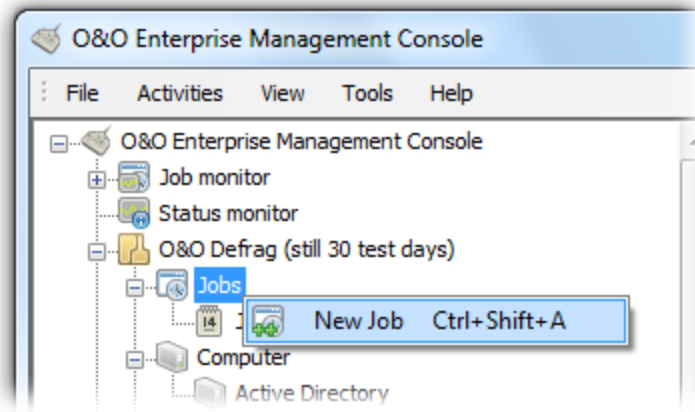
Enter computer information

## Step 7: Create new Job

A job specifies various parameters for using an O&O product across a network. Jobs can be allocated to particular computers or sites.

The Job Assistant is responsible for running time-controlled functions of selected O&O programs.

You can use the various settings in the Job Assistant to specify the frequency of a job or program specific methods. These settings are designed identically for every O&O program. The differences can be seen in the individual settings, which you will find in the Job Assistant for each particular program (e.g., in O&O Defrag).

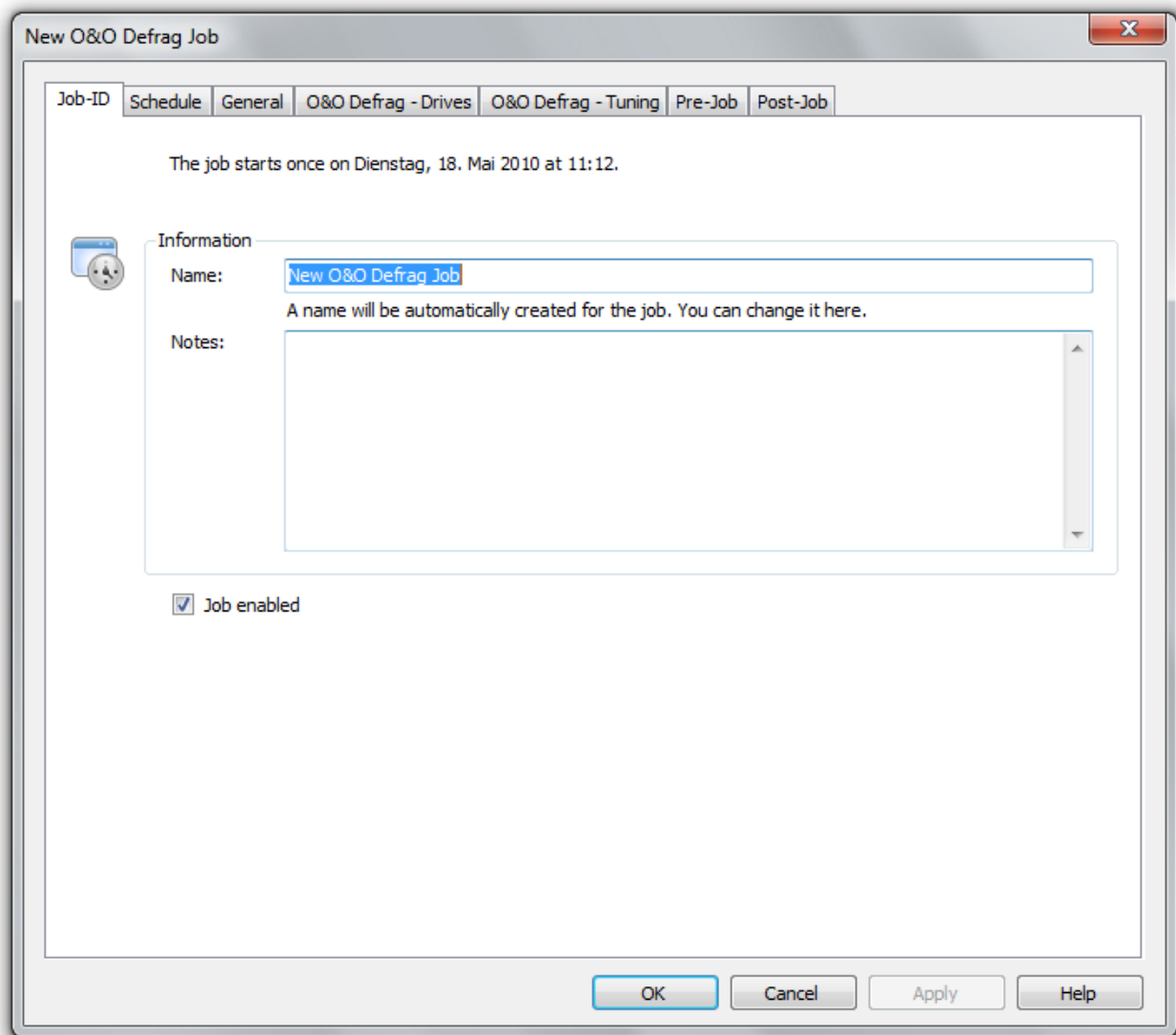


### Create a new job

1. To create a new job, open the Job Assistant by right-clicking on **Jobs** in the left navigation tree.
2. Under **Job-ID** you can specify the name of the job. This name will later be used for creating reports and will provide information about the action the job runs. The name has only symbolic value and can also be used for other jobs.
3. Then, click on all tabs (e.g. Schedule, General, O&O Defrag - Drives, O&O Defrag - Tuning) and there specify further settings.
  - If you click on **Apply**, all previously specified settings will be saved and the Job Assistant will remain open for further setting specification.
  - By clicking on **OK** you store all the settings. Afterwards, the Job Assistant will be closed.



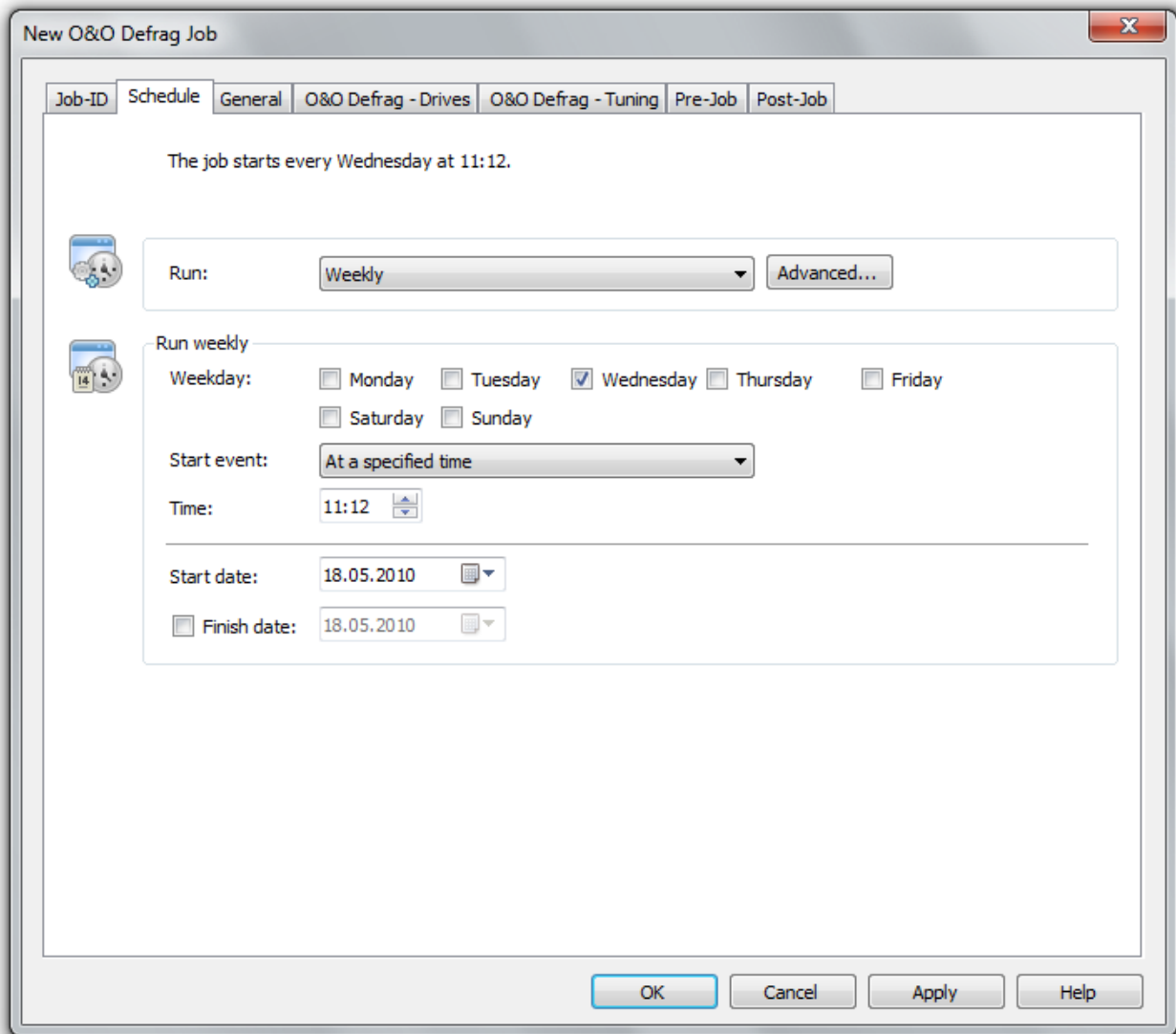
## Getting started



Create new job

### Create schedule for new job

Under **Schedule** in the Job Assistant, you can specify if the job should be run only once or repeatedly (e.g., once a week).



Create schedule for job

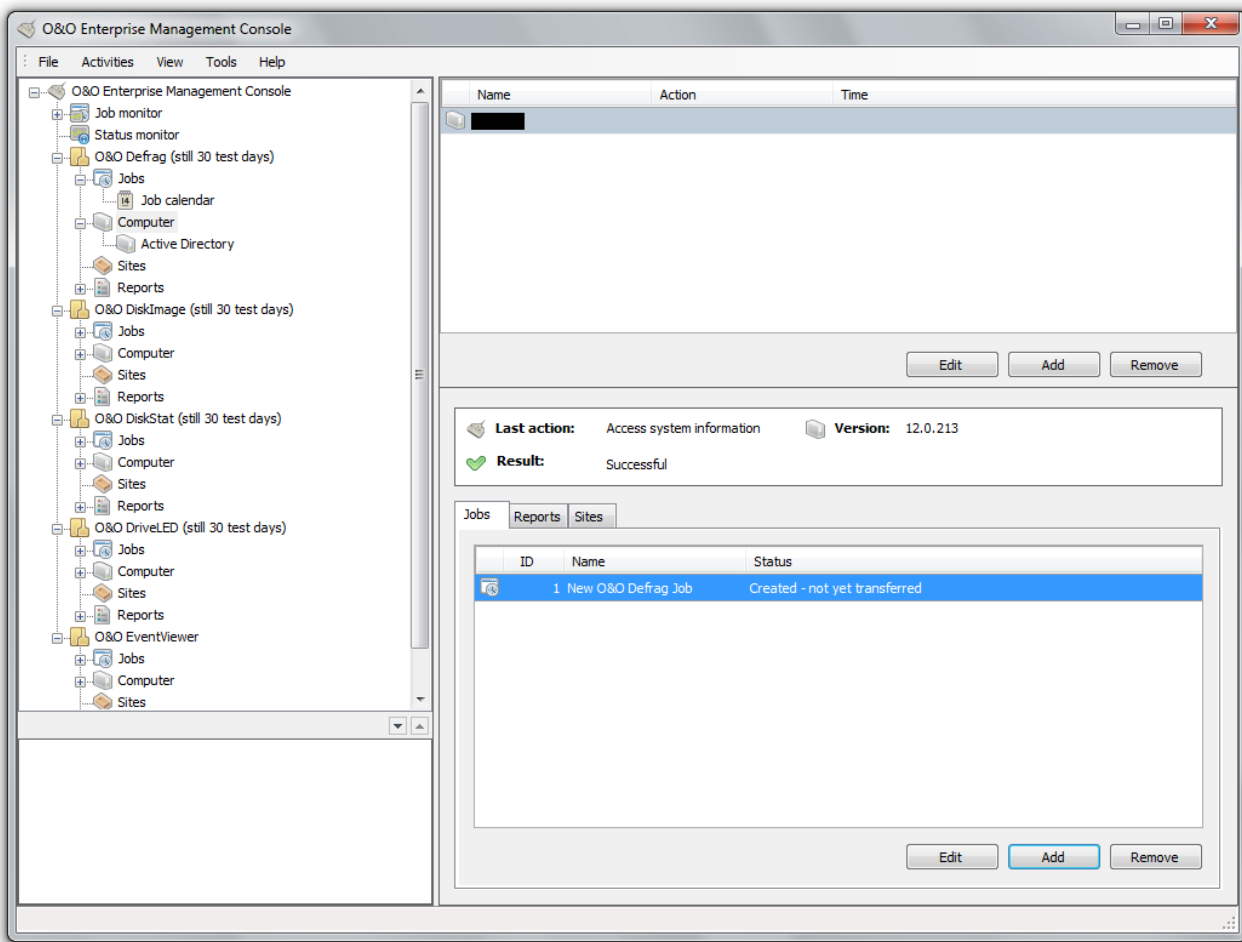
## Step 8: Assign Job to computer

**Note:** before you assign a job to a computer, you can perform a remote installation check. The check provides information about whether the remote installation needed for running a job is possible, or what can be preventing it. This function can be found by right-clicking the relevant computer.

Once you've created a job, you can select the computer on which the job should be run.

1. In the navigation tree on the left, click on the corresponding module folder on **Job**.
2. Select the Job in the upper right program window, which you want to assign to a computer.
3. In the tab **Computer**, you can assign the selected Job to one or more computers by clicking on **Add**. Multiple selection is possible with the help of the Ctrl key. Make sure that the activation check is placed behind the corresponding computers.
4. The Job will now be transferred over to the selected computer and run at the specified time.

## Getting started



### Assign job to computer

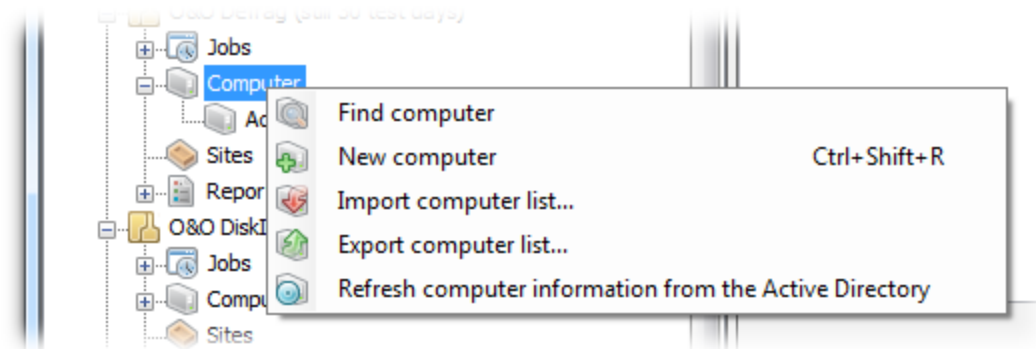
#### Assign Job to computer site

Once you've created a job, you can select the site on which the job should be run. You will not have to select every individual computer in the site.

1. Click on **Site** in the navigation structure on the left.
2. In the list of sites you can click the site for which you want to assign a job.
3. In the Jobs field below, you can assign a job to the selected site by clicking **Add**. Make sure that the activation check is placed behind the corresponding job.
4. Select the job you want to assign and click OK. The job will now be run on the selected site.

## Additional features of the computers

Computers in the OOEMC represent computers in your network. You can add computers manually or search for them automatically.



Functions of computer by right-clicking on it.

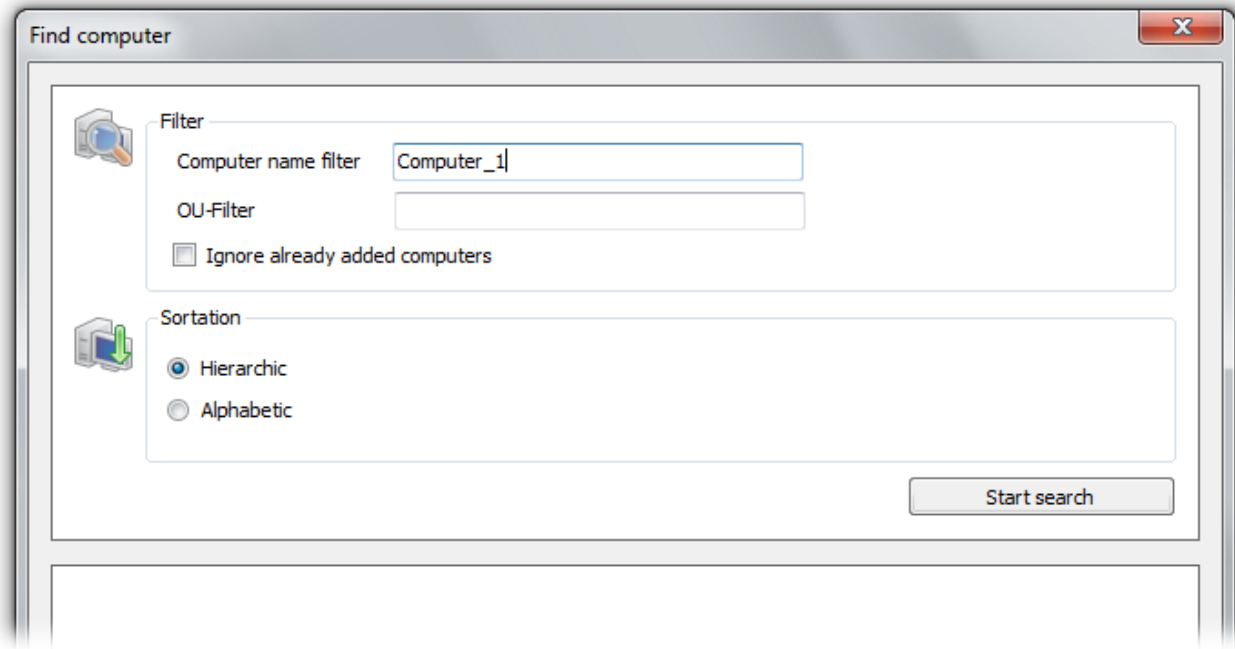
### Find and add computer

If you search for a computer, the Active Directory will be searched and all computers will be displayed in the list. Any computer in a network can be added to OOEMC.

1. To integrate a new computer into OOEMC, right-click Computer then **Find Computer**.
2. The search settings allow you to limit the selection of computers.
3. A list of all the available computers will appear. Select the computer you wish to add and confirm your choice with **OK**.

### Search settings

- The mapping of computers within the domain may be based on hierarchy or alphabetical.
- You can also continue to search for computer names.
- The OU filter allows you to only to view computers of a desired organizational unit. For this, enter the name of the organizational unit, e.g. "accounting".



Settings for searching for new computers

## Import/export site list

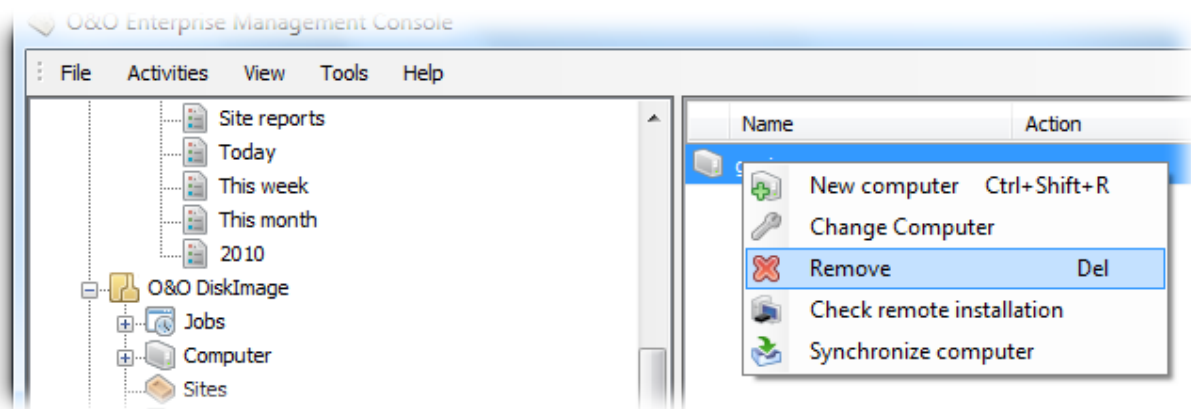
The lists of new computers you've created in OOEMC can be exported and saved for security purposes. The lists can always be imported back into the OOEMC when needed.

- Right-click **Computer**, then click **Import or Export Computer List** in the navigation overview.

## Remove computer or site

If you don't need a computer anymore, you can remove it from the OOEMC. Removing a computer needs to be done in each module individually. If you delete a computer in the module folder O&O Defrag, then O&O Defrag will be uninstalled on the target computer, and all O&O-Defrag Jobs will also be deleted, whether they were added locally on the target computer or via the OOEMC.

- For this right-click on the computer or the site on **Remove**.



Remove computer

## Update computer information

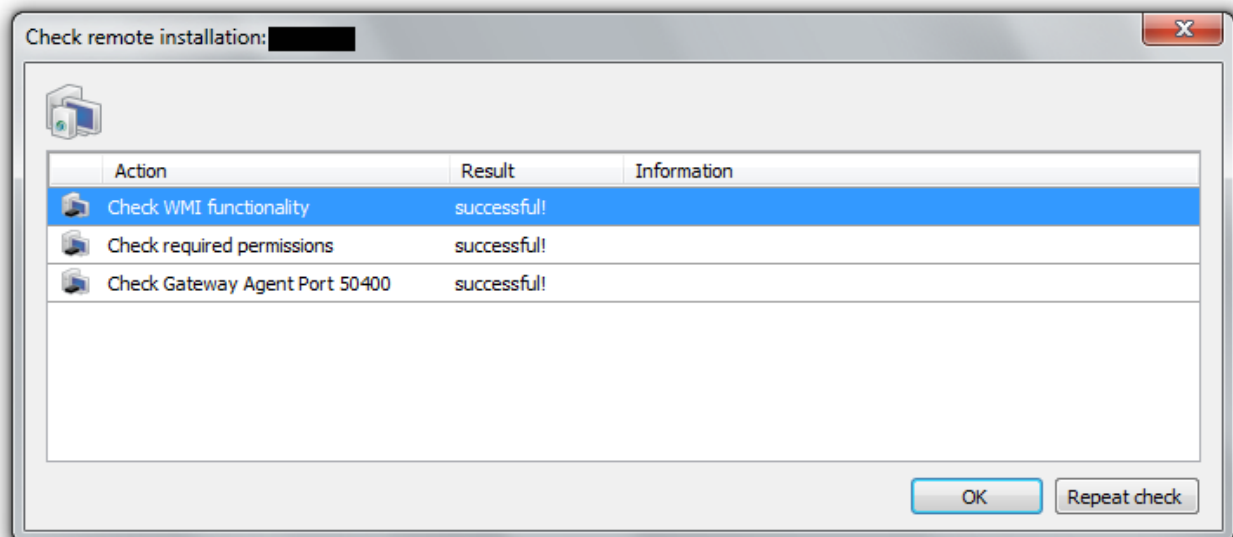
If you have changed the computer structure in the Active Directory you can command a synchronization with the domain controller. The computer arrangement within the OOEMC is adapted to the computer structure in the Active Directory, and if necessary will be newly organized.

1. To update the computer information, click on **Computer** in the selected module directory.
2. Select **Update Active Directory** either by right-clicking or under **Activities/Computer information**.

## Remote installation check

Before assigning a job to a computer, you can check if all the communication settings with the OOEMC are correct.

- For doing this, right-click a computer in the computer list, and click **Remote installation check** in the list of actions.



Remote installation check

## Remote control

**Note:** This function is only available in O&O Defrag!

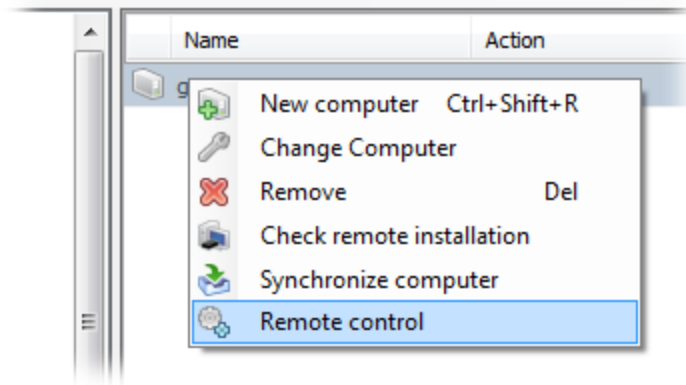
**Note:** Please bear in mind that for this function Port **50300** is open in the Windows-Firewall of the target computer. Otherwise it is not possible to exchange O&O Defrag relevant data between computers. If you're using a firewall from another manufacturer, check with the respective program's Help.

You can control O&O Defrag on a network server using the user interface over a remote control connection.

To do this, O&O Defrag must already be installed on the target computer. The installation can be performed manually or occurs automatically, when you add the computer to the O&O-Defrag computer list. The message on the success of the remote installation can be read in the corresponding report.

## Additional features of the computers

- To activate the remote operation, you have to select the computer that you want to connect to from the list.
- Please click on the taskbar or right-click on the corresponding computer in the list on **Computer Control**. Afterwards, you can execute jobs or modify settings from the interface of O&O Defrag.



Remote control

## Display computer properties

Double clicking on a computer in the computer list opens the Properties dialogue. There you can:

### General

Under general you can see the DNS name of the computer. In addition, you can specify, if the Agent or also the user interface should be installed on the computer.

You will also see the information (Version and computer type - Client or Server) of each corresponding operating system.

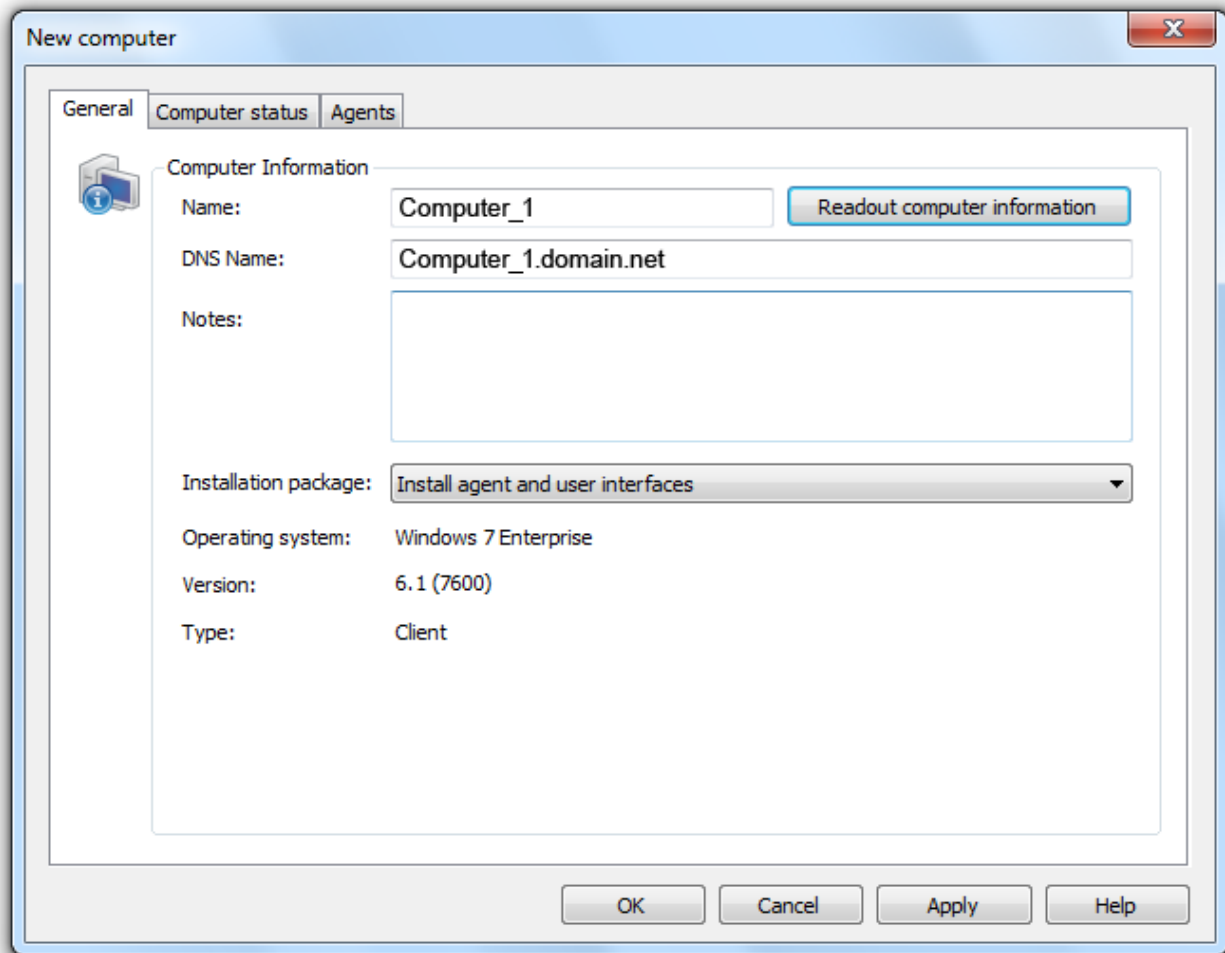
### Computer status

Access the computer status to restart the computer, to continue with the installation, or finish it.

If a computer is not available whenever the jobs are distributed, e.g. because it is turned off, the control service of the OOEMC will try to contact it again and again after certain time intervals. The interval will become less frequent, the longer the computer cannot be reached. The function **Reset status** you can order the control service, to reach the computer whenever it is turned on again - and to wait for the next interval.

### Agents

Shows the status of the installation of the Agents on the computer. Agents can be started or stopped individually.



Computer properties

## Execute Job on a computer

After assigning a Job to a computer, it will be run automatically on the computer.

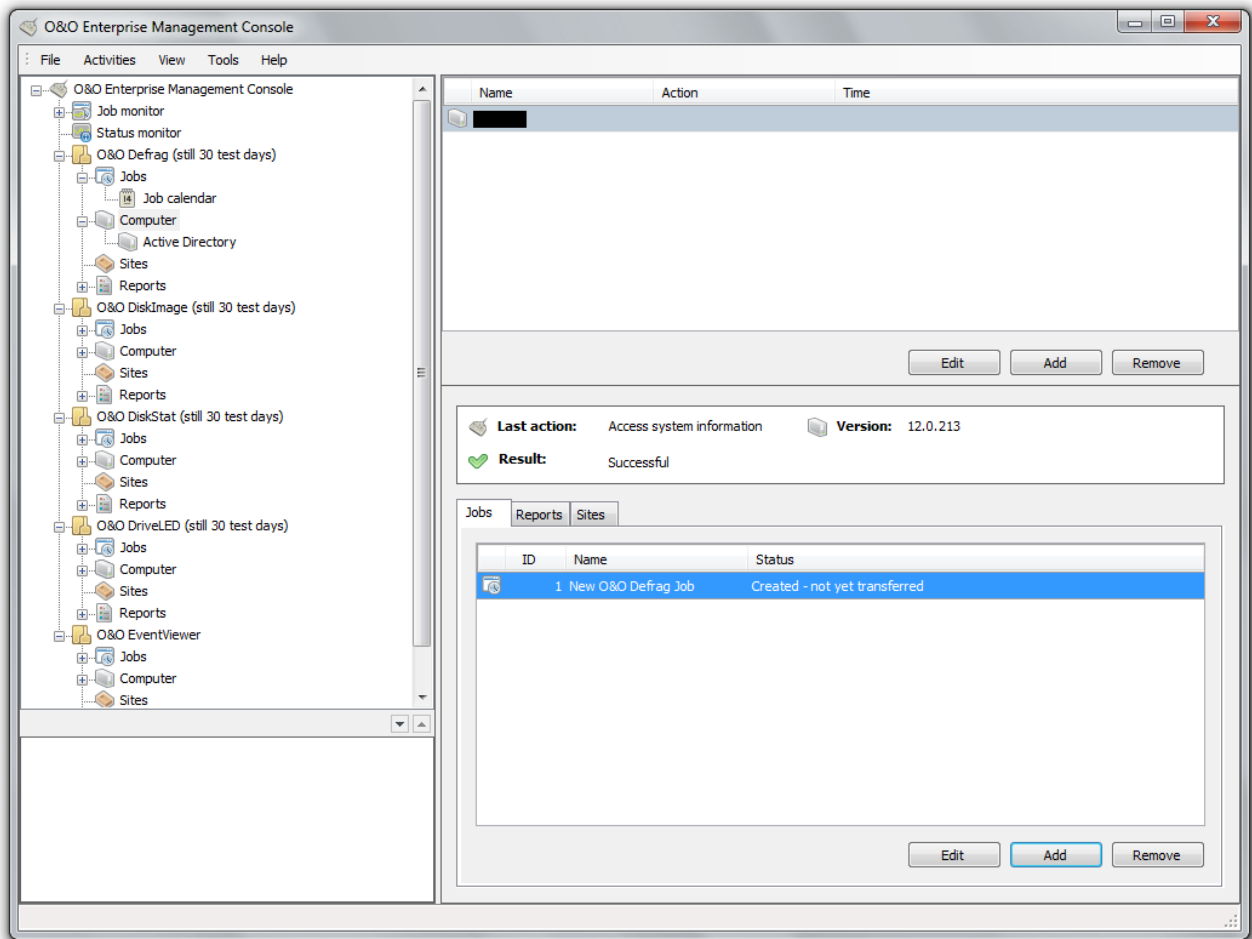
To assign a Job to a computer, you need to have created the Job before. If you haven't created a Job yet, proceed as described in chapter [Create new Job](#).

1. In the navigation tree, click on the corresponding module folder on **Computer**.
2. Only the available computers, which have the Agent of the module installed are listed in the upper right program window.
3. Select the computer you want and click on **Add** under **Job** in the lower right window.
4. Select the Job from the list by enabling the control check and confirming with **OK**.
5. The job will now be run on the scheduled time.

**Tip:** To stop the execution of the Job, you can delete the connection with the computer by clicking on **Remove**.



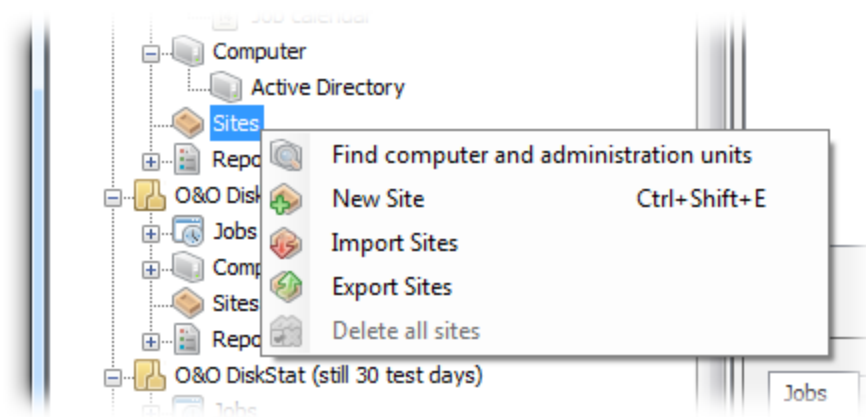
## Additional features of the computers



Execute job on a computer

## Additional features of sites

Jobs can be run on either individual computers or on a site (a group of computers). You can define sites regardless of their domain structure and, for example, divide workstations and servers into two different sites. You can then allocate certain jobs to each site and avoid the danger of using settings for servers on workstations and vice versa.



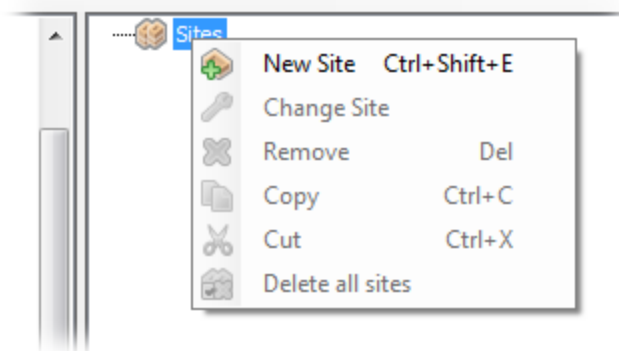
Site: right-click

## Create site

In the OOEMC you can add existing sites or create new ones. You can, of course, also change and delete them.

To create a new site, follow the steps below:

1. Right-click on site in the left navigation zone and select the folder **Site/New Site**.
2. Enter a symbolic name for the site in the dialogue, and as the case may be, assign it to a superior site.
3. Confirm your selection with **OK**.
4. You can now [add computers](#) to the site and [assign jobs](#) to it.



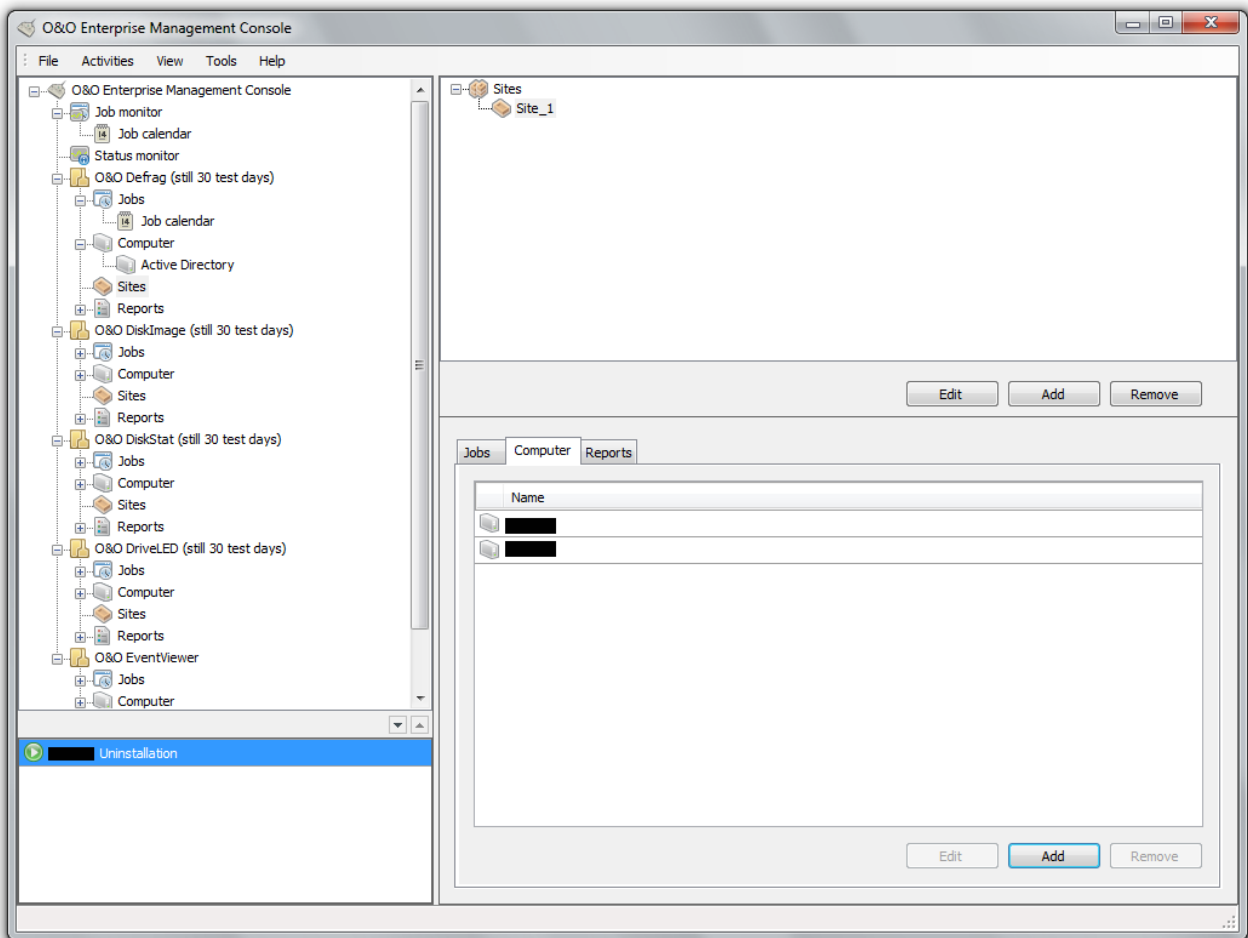
## Settings for the new site

### Add computer to site

In order to add a computer to an existing site, please do the following:

1. Click on **Sites** in the navigation view to the left.
2. Click the site where you want to add a computer.
3. Then click the tab **Computer** to the right in the middle of the program window.
4. Click on **Add**. All the available computers will now be listed.
5. Select the desired computer.

**Note:** When a computer is added to a site, it automatically receives all jobs that have been allocated to this site. When a job is added to a site, all computers of this site will automatically receive this job.



Add computer to site

### Remove computer from site

To remove a computer from a site, do the following:

## Additional features of sites

1. Click on **Sites** in the navigation view to the left. All the existing sites will then be displayed in the upper right-hand program window.
2. Click the site where you want to add a computer.
3. Then click the tab **Computer** to the right in the middle of the program window. Select the desired computer and click Remove.
4. Then select the desired computer and click **Remove**.

## Find computers and administrative units

You have the possibility to display your domain structure over the OOEMC. Your domain controller will be accessed and the complete organizational unit structure is transferred as sites into the OOEMC. The computer of the organization units will be added as computer to these sites.

- This can be done by right-clicking in the navigation tree on the **Sites** folder, and then selecting **Find computers and administration units**.

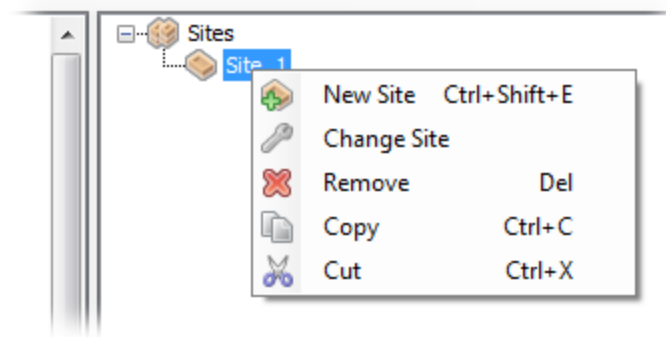
## Import/export sites

Lists of sites that you've created in OOEMC can be exported and saved for security purposes. The lists can always be imported back into the OOEMC when needed.

- To do this, right-click on Sites and then click **Import sites** or **Export Sites**.

## Copy sites

If you want to use on or more sites for another module, then you can copy the existing sites with all the computers in them and paste them in a different folder.



Right-click: copy site

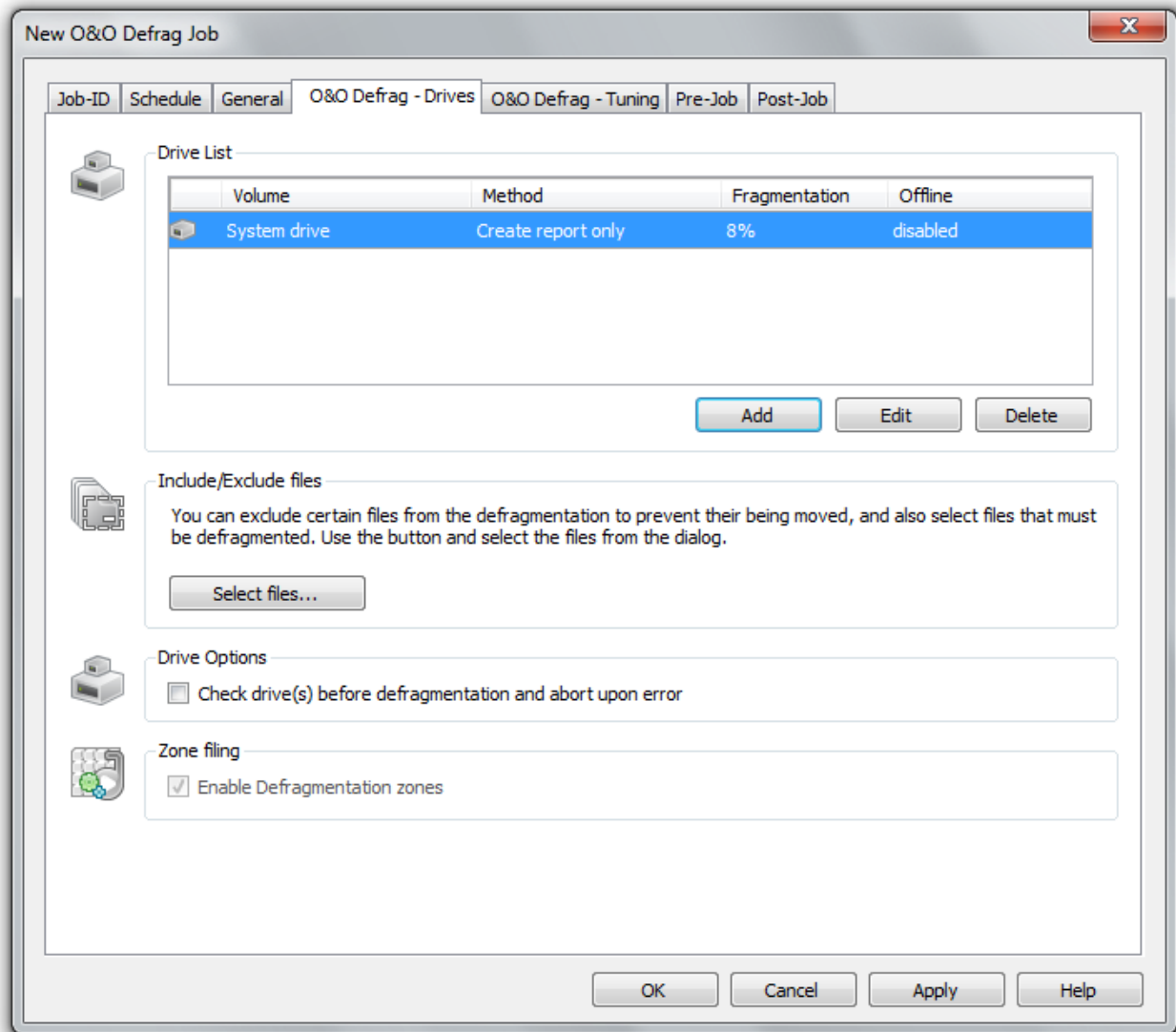
## Additional features of Jobs

You can change already existing jobs at any time. The changes will then be automatically applied to any computer that was assigned that particular job.

**Note:** If the target computer is turned off when the change is made, the running of the changed job can be delayed. A longer interval setting can also result in delays.

### Create new Job

1. To create a Job, click on the desired module folder on **Jobs** in the navigation tree.
2. Now, click on **Add** in the upper right program window, to start the Job Assistant.
3. Optionally, you can also enter a name and some notes for the Job under **General**.
4. Under **Schedule** you can specify the time of execution and the interval, if the Job is supposed to be executed regularly.
5. Now, make more specific entries in the Job Assistant of each corresponding tab of a module (e.g. O&O Defrag), such as the drive or the storage path needed for the its execution.
6. Optionally, you can make further specifications under **General/Pre Job/Post Job**.
7. Confirm your entries with **OK**, to save the Job.



New Job - example taken from O&O Defrag

## Specific features for Jobs with O&O DiskImage

When creating jobs across a network using O&O DiskImage, you'll have to manually enter the storage path (**target file**) for the image file in the Job Assistant under **Image**. If you don't enter any information, the image file will be stored locally on the system partition, usually under C:\Windows\System32.

If you want to store your images on network drives, please continue reading in chapter [Connect network drives](#).

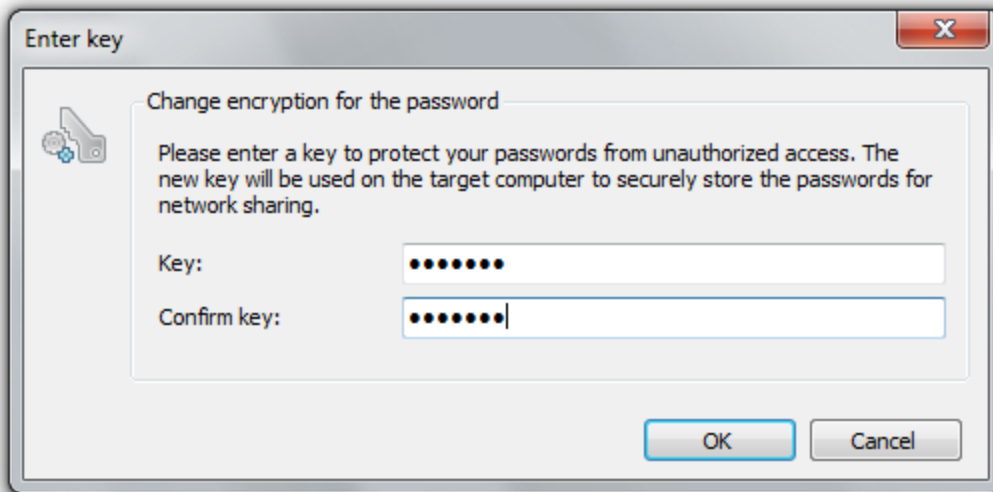
## Map network drive

**Note:** this chapter is only relevant when planning Jobs with O&O DiskImage.

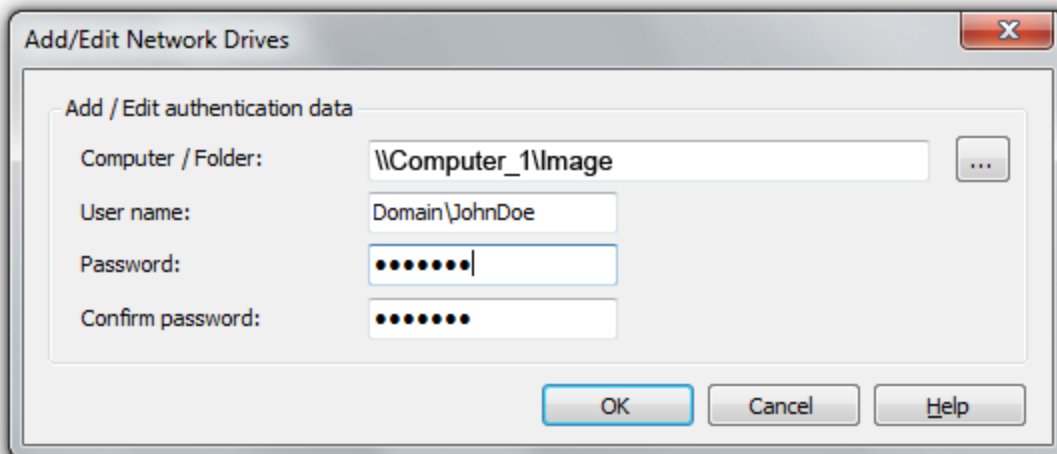
## Additional features of Jobs

To run O&O DiskImage Jobs successfully in the network, you must make sure to hold sufficient permissions to access network drives. You need the permissions to authorize storing images on network drives. You only have to authenticate yourself within the network. Enter the following settings under **Tools/Module options/O&O DiskImage**:

- Click on **Add authentication data**.
- Enter a password of your choice and confirm your entry. The entered number combination encrypts the network drive sharing. The entry as such will also be encrypted. The key for this password is composed of a public key and a private key, so that the password file will only be opened and read by you or O&O DiskImage.



- Under Computer/Folder enter the path under which the image is to be saved, or from where it is supposed to be loaded from: `\\Computer name\Folder name` or `Domain name\Folder name\User name`. Alternatively, you can also enter the computer name only, if all the sharing options can be opened by the selected user.

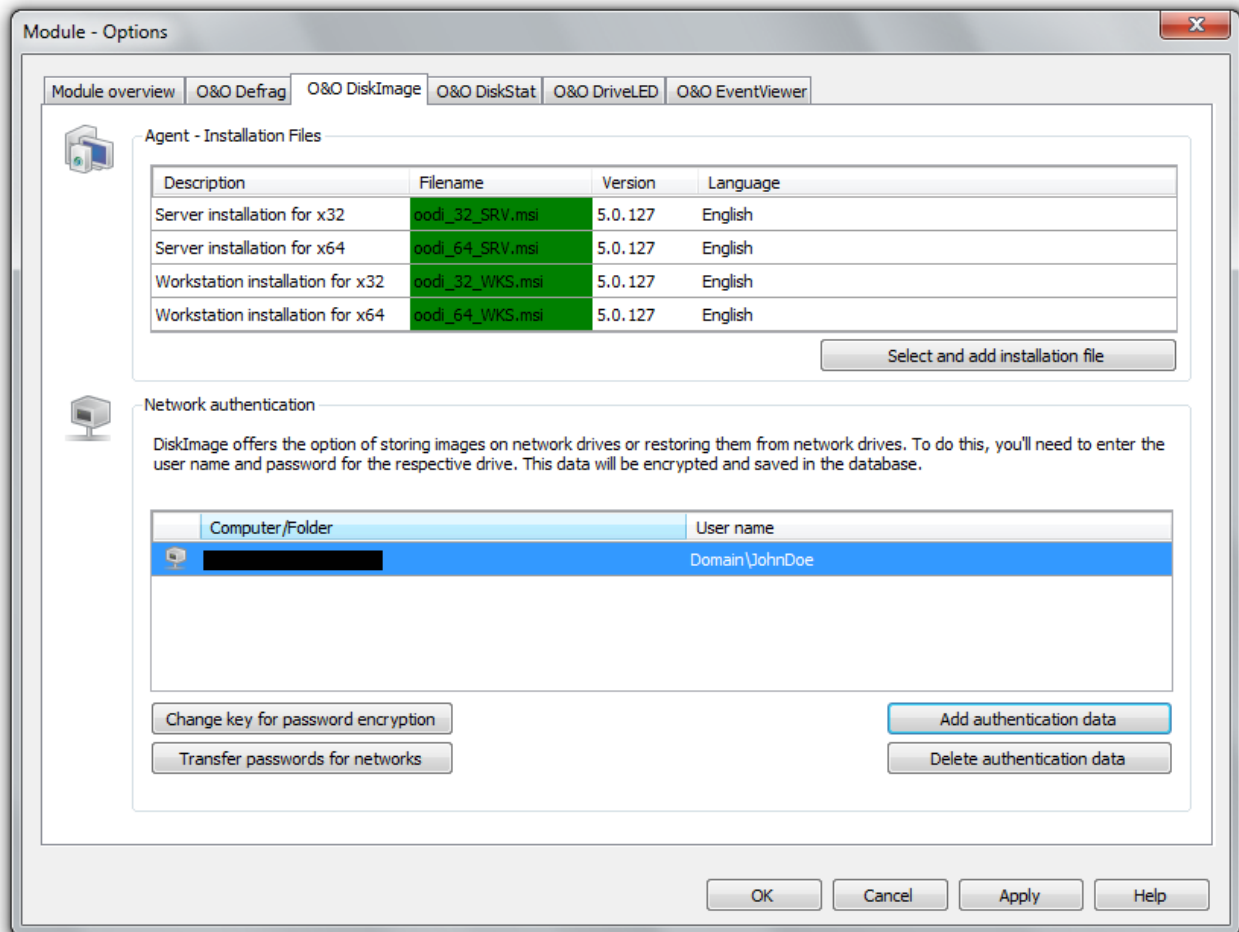


- You have to enter a qualified name of a user account while entering the user name. For example, the corresponding domain for the specific domain account has to be entered and covered, e.g. `domain\user1` or

## Additional features of Jobs

User1@domain.

- Enter the network password of the user, or of his user account. Please keep in mind that the user under which you login has to hold access rights for the target or original folder. You can check for them under Properties in the corresponding target directory under Security.
- Afterwards, your entries will be displayed in the computer and folder list under **Network authentication**. Of course, it is possible to add several network drives.

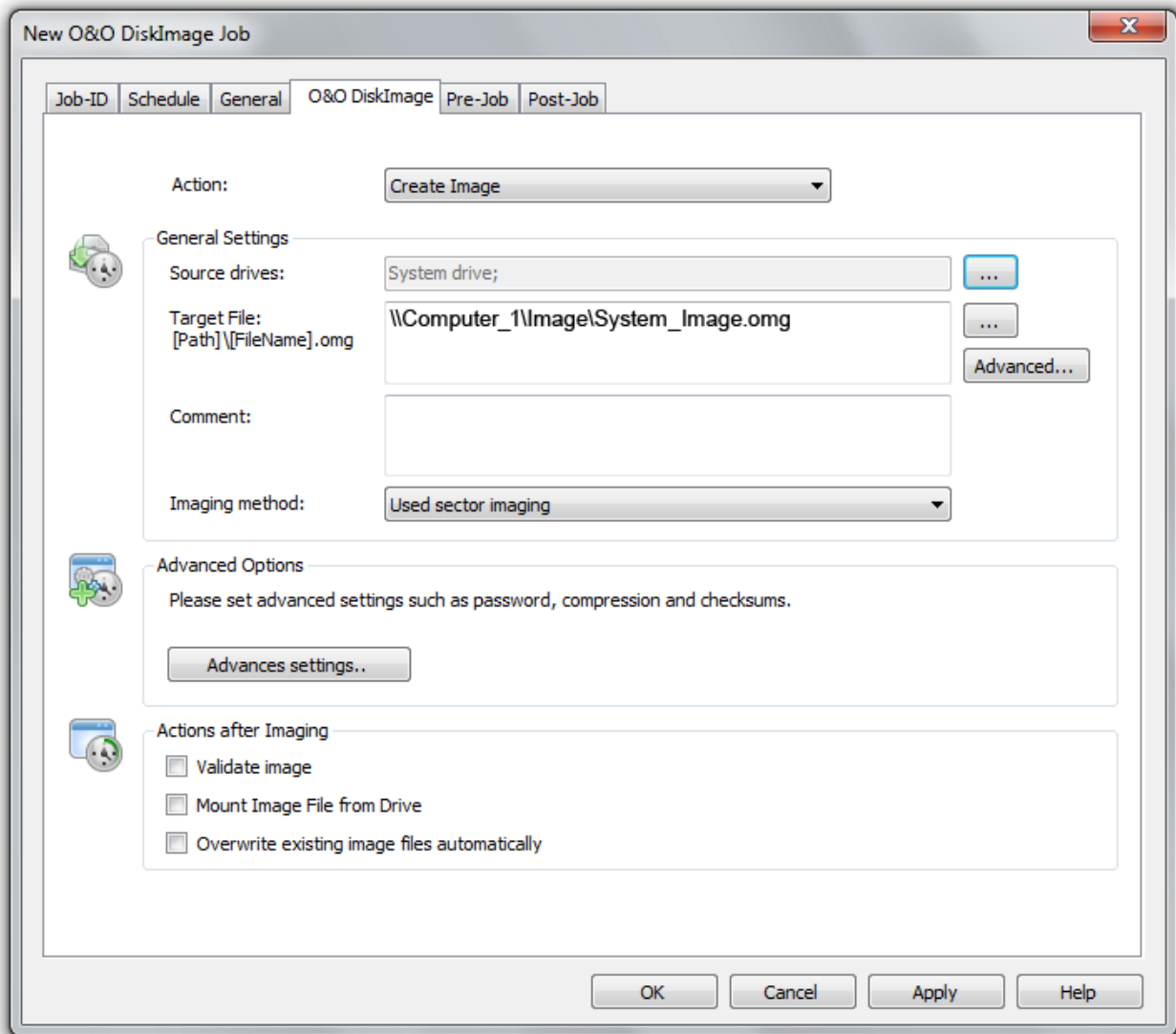


Display of the number of network drives available.

- If you create a Job afterwards, you can specify the network drives under **target file** in the Job dialogue, for which you have authenticated yourself. The image will automatically be stored there.



## Additional features of Jobs



Job Assistant for O&O DiskImage with target folder entries.

## Change Job settings

Right-clicking the job in the job list will let you **change a job**. Enter the changes in the Job Assistant and confirm your entries. After that the Job will be transferred.

## Assign Job to computer

**Note:** before you assign a job to a computer, you can perform a remote installation check. The check provides information about whether the remote installation needed for running a job is possible, or what can be preventing it. This function can be found by right-clicking the relevant computer.

Once you've created a job, you can select the computer on which the job should be run. After assigning a Job to a computer, it will be run automatically on the computer.

1. In the navigation tree on the left, click on the corresponding module folder on **Job**.
2. Select the Job in the upper right program window, which you want to assign to a computer.
3. In the tab **Computer**, you can assign the selected Job to one or more computers by clicking on **Add**. Multiple selection is possible with the help of the Ctrl key. Make sure that the activation check is placed behind the corresponding computers.
4. The Job will now be transferred over to the selected computer and run at the specified time.

## Delete Job

Right-clicking a job in the job list will allow you to **remove it**. If the job is running, it will be automatically aborted.

## Readout module overlapping information

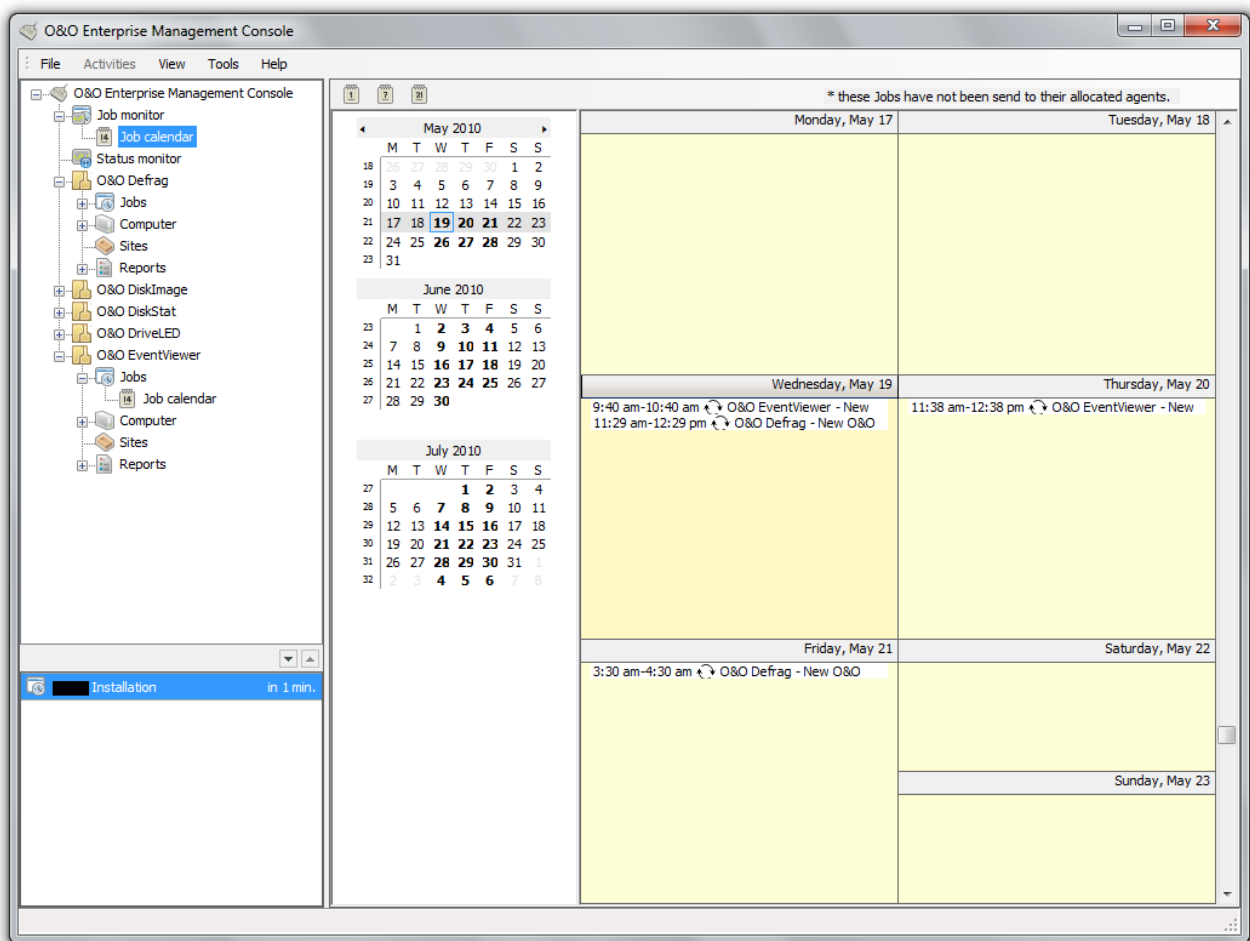
The navigation tree allows you to view the sub-folders of the O&O Enterprise Management Console and thus retrieve a general overview of all Jobs and processes.

### View all Jobs (Job monitor)

The job monitor shows all created Jobs, independently from the modules.

### Job calendar

The Job calendar of the OOEMC offers you an overview on the moment of time of the execution of all created Jobs. The Job calendars in the module folders only show the selected Job of the module.



Calendar view of all created Job

### Read transfer status (status monitor)

The status monitor displays information on current processes, so that you can read the Jobs run by the control service and their status.

In the Tab **Current waiting list** you can read, when which process will start.

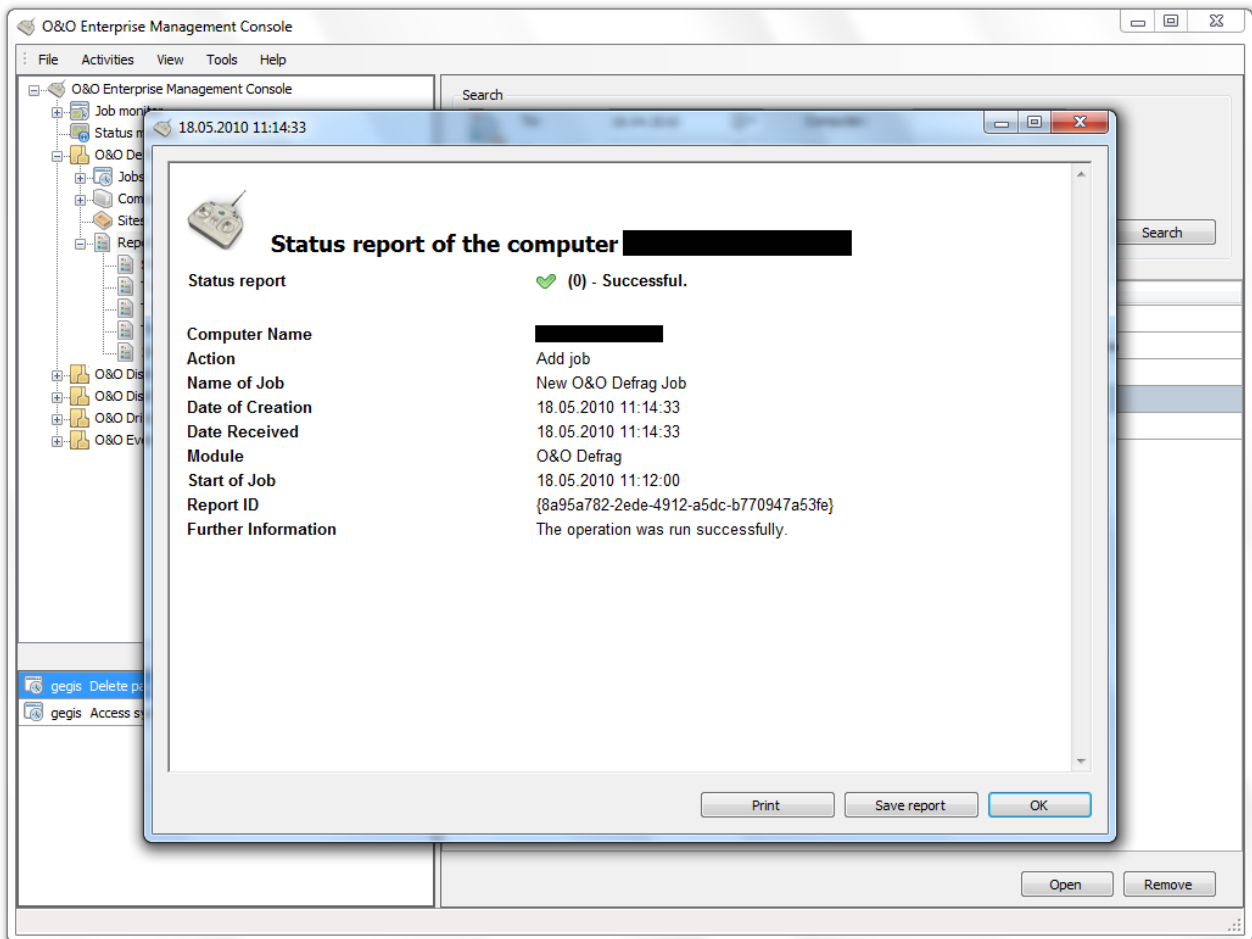
Under **Completed jobs** you will find all successfully completed processes displayed in list form.

## Reports

A report will be created for every action performed by OOEMC and the clients. This will be filed in the SQL database and can be accessed as an HTML document.

You can find all the created reports in their respective module directory in OOEMC, filed according to date. In the report, you'll find all the information about the running of an installation or job, for example, status, computer name, action, and date.

- To view the report, click in the corresponding module folder (e.g. O&O Defrag) on reports and select the one you want to see from the list.



Status report

## Search reports

1. To find certain reports click on **Reports** in the left navigation bar in the module you selected.
2. You can now search for certain reports in the upper right-hand program window. The search screen facilitates the search.
3. You can limit the search by setting parameters for time frame, computer name or Jobs. In addition, you can also filter reports for successful or unsuccessful notifications.

## Readout module overlapping information

The screenshot shows a search interface with the following elements:

- Search Form:**
  - Two 'To:' date fields, both set to '18.05.2010'.
  - 'Computer:' dropdown menu set to 'Computer\_1'.
  - 'Job:' empty text input field.
  - 'Report type:' dropdown menu set to 'Show all reports'.
  - Checkbox labeled 'Only show reports received from agents' (unchecked).
  - 'Search' button.
- Table Header:**

Computer	Job	Date	Action
----------	-----	------	--------

### Search reports

#### Search group reports

1. To find certain group reports click on **Reports/Group reports** in the left navigation bar in the module you selected.
2. You can now search for certain reports in the upper right-hand program window. The search screen facilitates the search.
3. You can limit the search by setting parameters for time frame, computer name or Jobs.

## Options

Under **Tools/Options** in the menu bar, you can change your settings for working across a network with OOEMC.

### Login to the database

In order to work with OOEMC across a network, you'll have to login to the database.

To do so, in the menu under **Tools/Options** click **Database**.

#### **Server Name:**

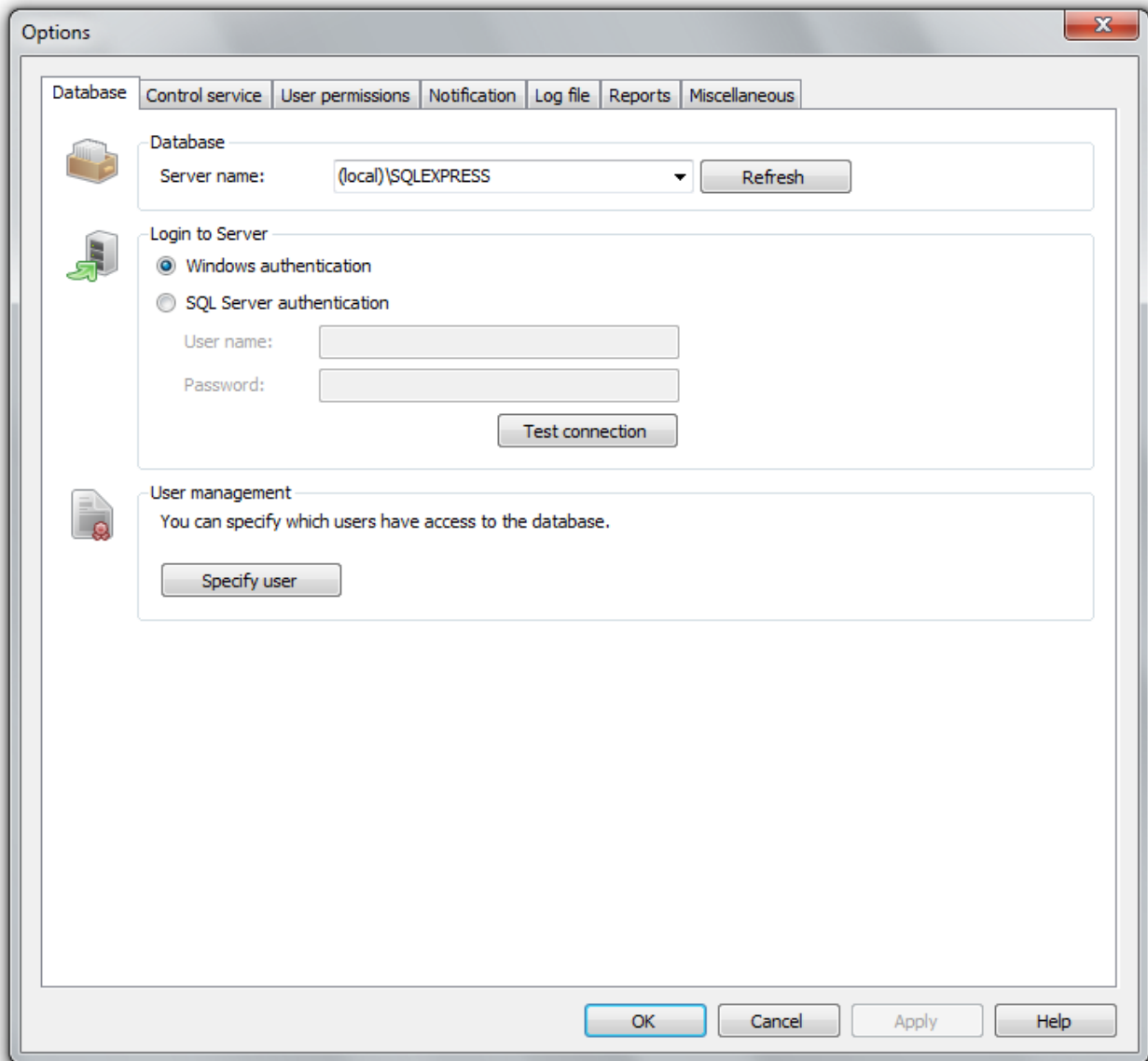
Name of the Server on which the SQL database is installed.

#### **Login to Server**

Windows Authentication: user and password of the Windows user will be needed.

#### **SQL Server Authentication:**

User data and password that you supplied will be used.



Login to the database

### User management

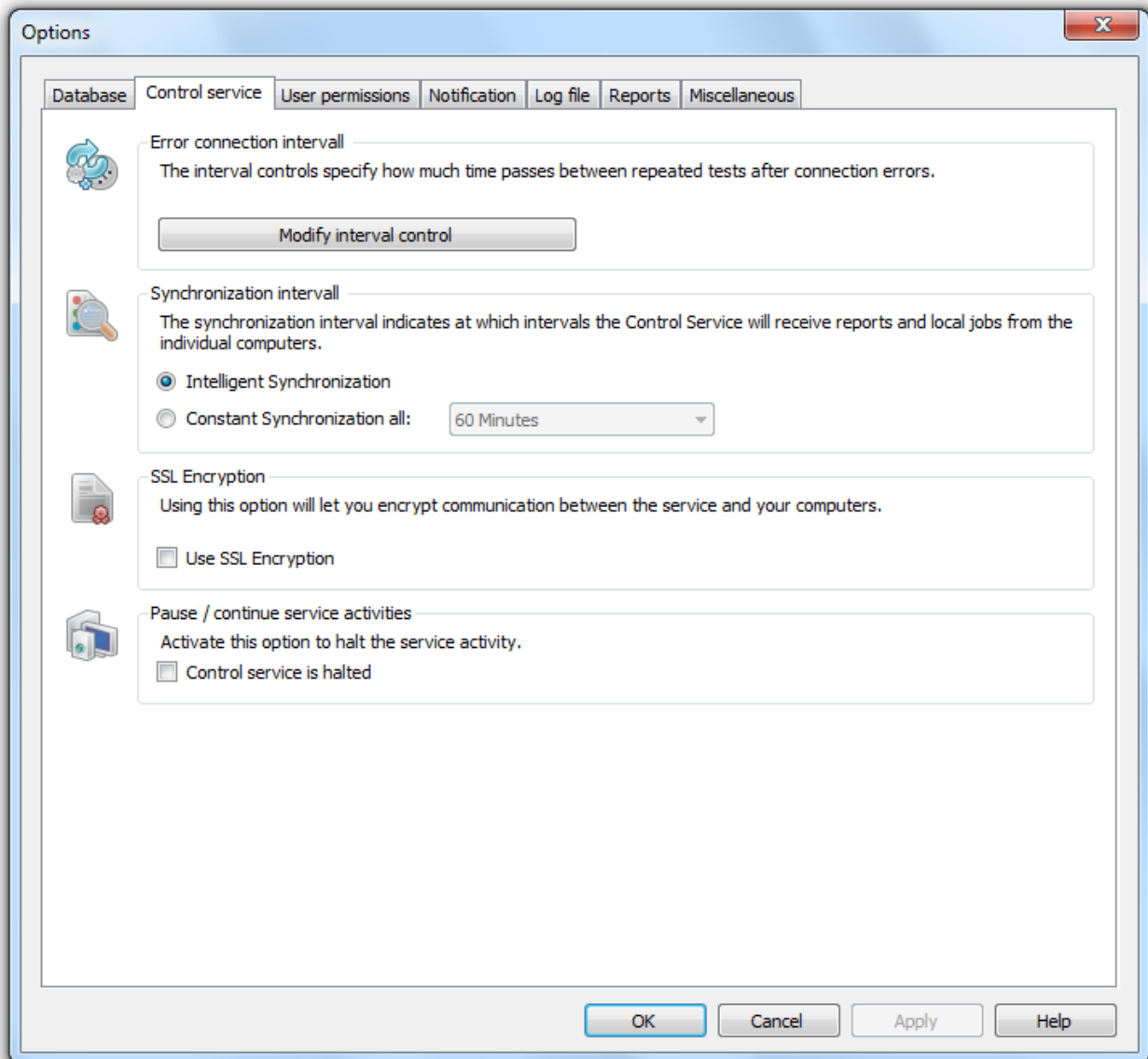
In **User Management** you can specify which users have access to the database.

In the menu under **Tools/Options/Database** you can access User Management.

### Manage control service

The [Control service](#) distributes Jobs in the network and makes regular contact with the network computers for this.

You can change the settings for the control service under **Tools/Options/Control service**.



Control service

### Retry-connection interval

The interval controller sees to it that the OEMC Control Service tries to pass on jobs to target computers automatically and at regular intervals. If a computer is not in operation at the time a job needs to be run or during a remote installation, because, for example, it's simply turned off, this will be noted in a report and the request will be repeated at certain intervals.

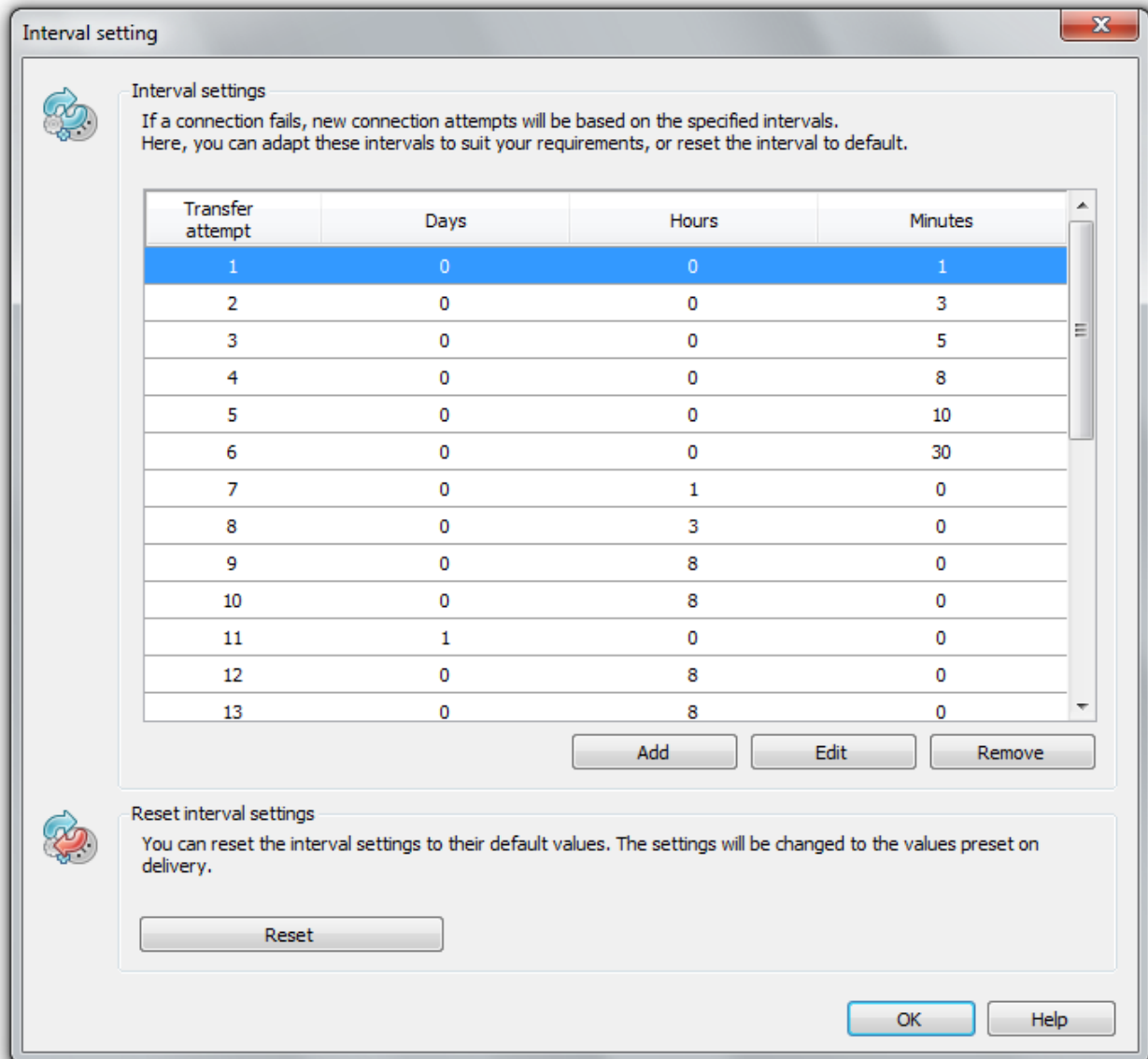
**Tip:** The lines stand for the number of transmission tries, also the first line stands for the first transmissions try, the second line for the second etc. the time window will increase after each transmission try as default.

1. To customize the performance interval of the OEMC Control Service, under **Tools/Options** click **Control service**.



## Options

2. In the program window under **Change interval settings** you can change and specify the default settings of the time intervals whenever the service shall contact the target computer.
3. For this, select a line and depending on your needs click on **Edit, Add** or **Remove**



Interval settings for the retry-connection

## Synchronization interval

The synchronization interval indicates in what time interval the control service retrieves reports and local tasks of individual the computers.

- You can adapt the synchronization interval under **Tools/Options/Control service/Service options**.

## Intelligent synchronization

## Options

The option intelligent synchronization adapts the synchronization interval automatically to the number of clients in the network. The contact frequency of computers influences the number of automatic synchronization. The more contact there is, the less it will be synchronized. This occurs to minimize data transfer volume.

### Constant synchronization

If you wish for a regular synchronization, then you can set a permanent time interval under **Constant synchronization**.

### SSL encryption

The SSL encryption guarantees that data will not be able to be read or manipulated during its transfer from computer to service.

- You can enable SSL encryption in the menu under **Tools/Options/Control Service**.

**Note:** If you use an SSL encryption, Port 50401 must also be opened on the target computer. If you're using a firewall from another manufacturer, check with the respective program's Help.

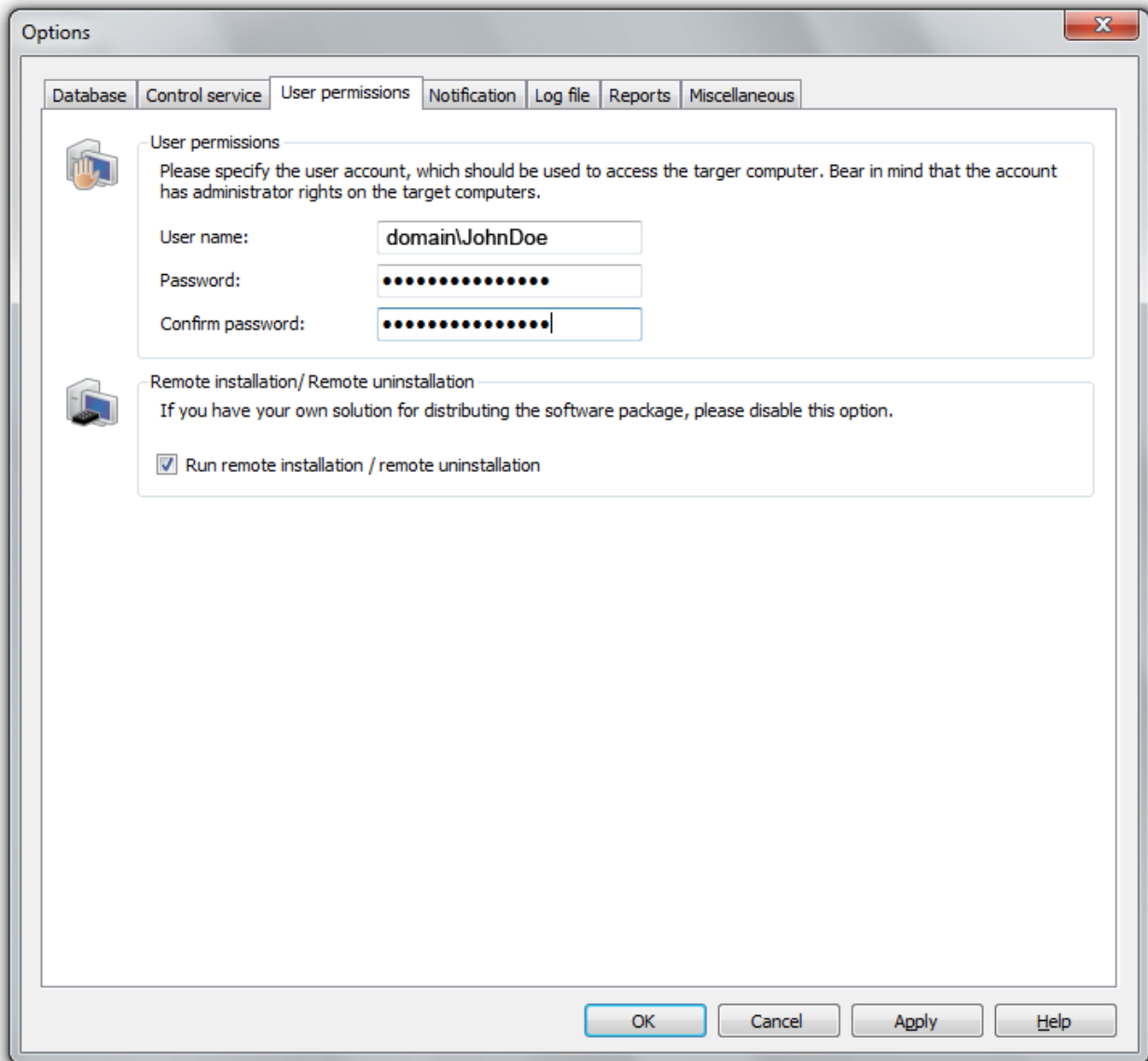
### Pause service activities

Enable this function, if you want to pause the control service, so that no job is transferred or no computer is installed.

### Computer access

Please enter here, under which user name and password contact shall be made to the target computer. The account needs to hold administrator rights on the target computer.

- If you already own an installation solution, you can disable the **Remote installation/Run remote installation** through OEMC.



Computer access

## E-mail notification of events

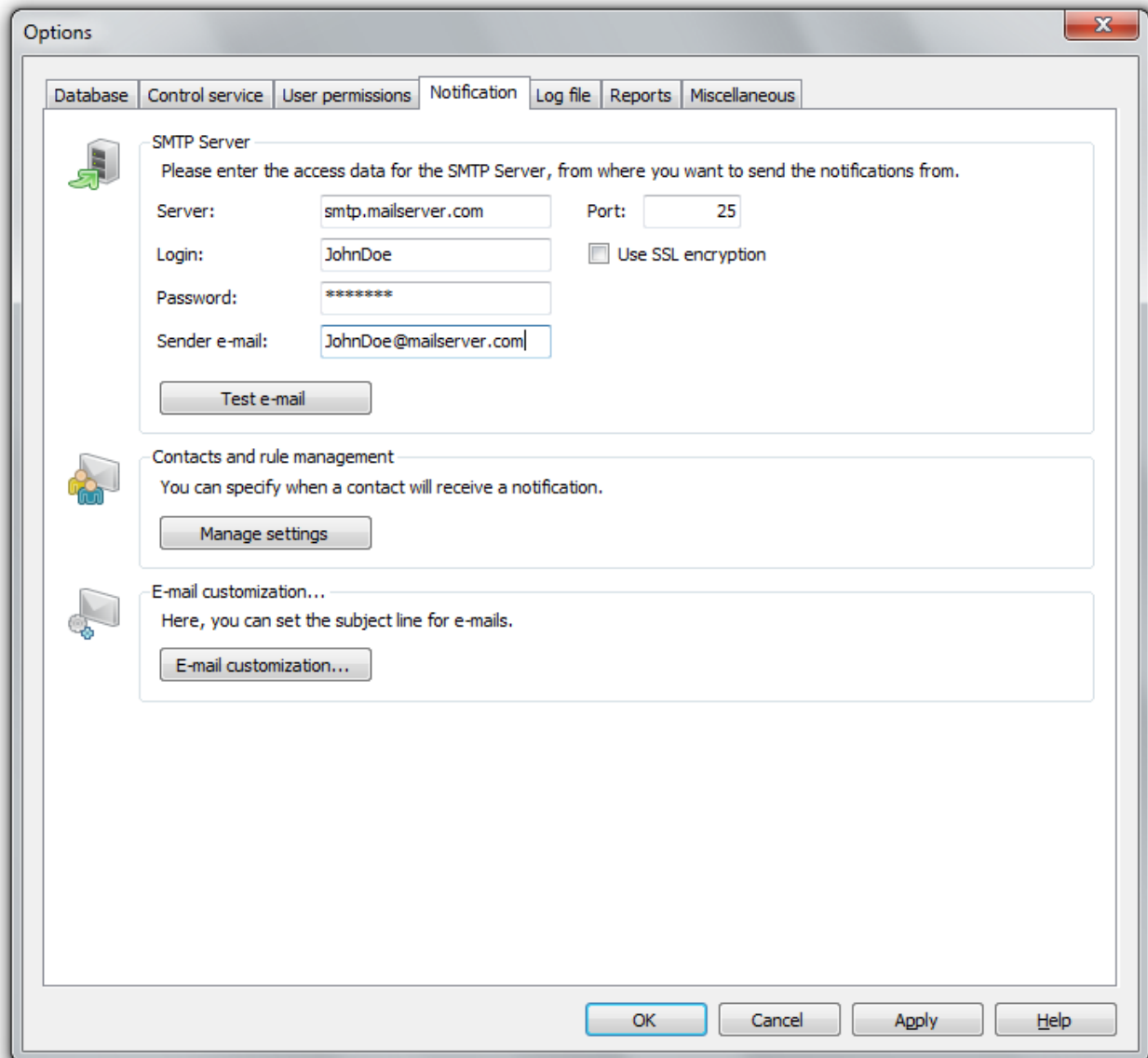
You can create a setting to keep you informed of events by E-mail. Contacts can also be created for those who should be contacted for particular events.

You can also define rules such as, if an agent is unable to allocate a job, contacts A and B should be informed. The service will thereby send an E-mail to the respective contacts.

You can access the settings for the program's behavior regarding errors, events or warnings in the menu under **Tools/Options/Notification**.

**Note:** the entered Email address has to be known to the Email Server, otherwise, Email notifications might fail.

## Options



Settings for E-mail notifications

## Log file

The log file documents the activities executed by the program. This information is very helpful and supportive when analyzing and removing errors. To save storage space, you can normally also disable the documenting feature.

## Report settings

In the menu bar under **Tools/Options/Reports** you can set further report settings.

### Storage period for reports

Here you can select, if the reports should be stored for an unlimited or a limited time period.

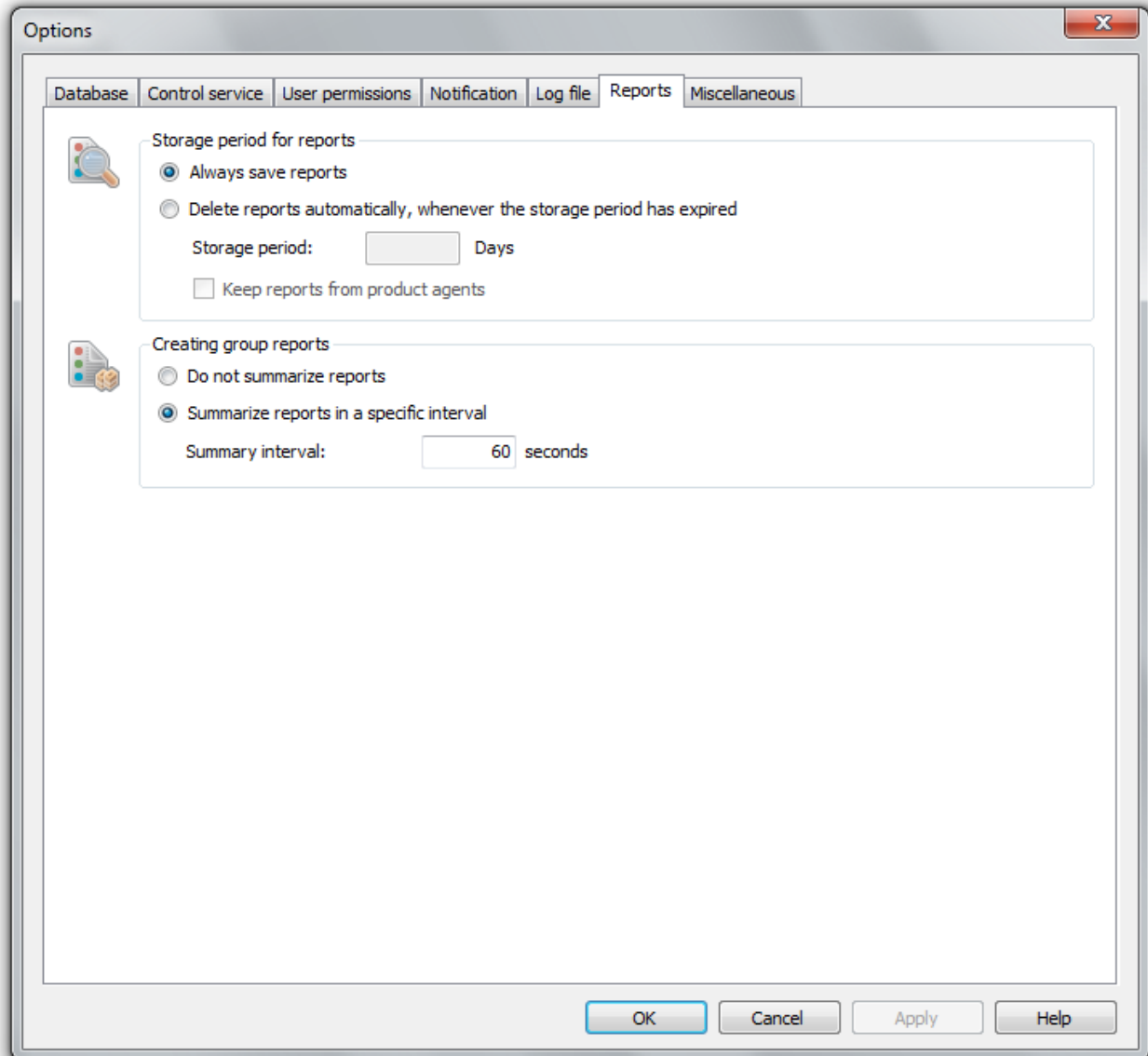
### Creating group reports

## Options

Group reports are summarized reports. Reports on all actions are created, e.g. installation, de-installation or job execution. You will thus always be informed on what activities are executed on which client.

**Do not summarize reports:** You will receive a report per Client and activity.

**Summary interval:** By default, old reports are updated every 60 seconds (time frame can be modified), or new reports are created for new activities.



Options report settings

## Miscellaneous

Under **Tools/Options/Miscellaneous** you will find further settings possibilities.

### **Automatic update of views**

Here you can specify the settings for the user interface. Please specify here, in what time intervals the views such as the computer view or the Job view should be updated automatically. Higher time intervals lead to a performance increase of the graphical surface. The views are updated every 30 seconds by default.

### **Hide synchronization of computers**

If you want to hide the synchronization of computers in the transmissions overview, enable this function.

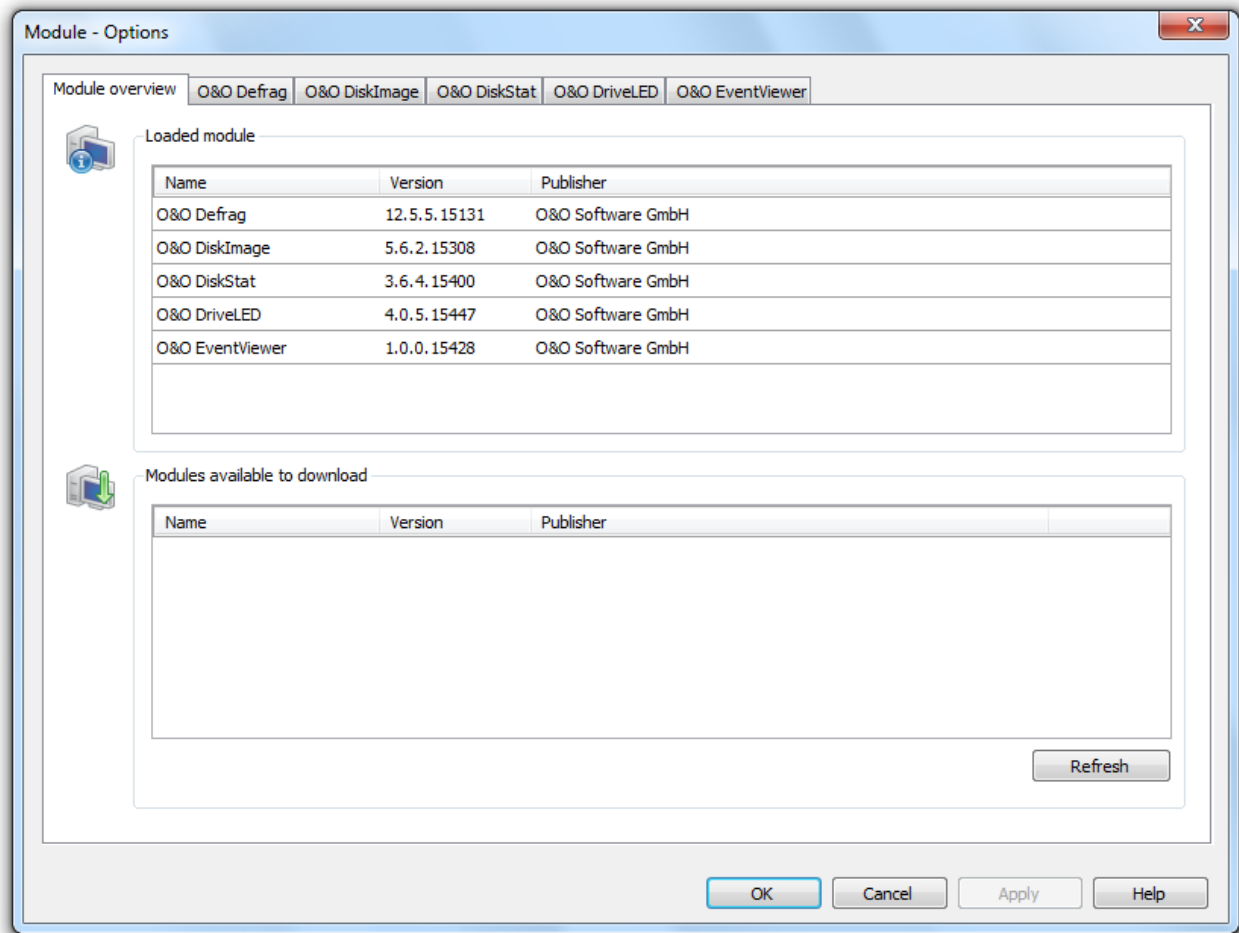
### **Load product start page from the Internet**

Here you can enter, if you want to load the product start page from the Internet at all times. By loading the start page from the Internet, you will be up to date on the latest news and notes for the day to day work with the product.

## **Module options**

The OOEMC informs you as soon as a new module or update is available. The overview lists all integrated modules as well as non integrated modules and updates of modules, which are available for download. If you download a new module, it will be automatically installed after you the restart the OOEMC. Because of this dynamic loading of modules the OOEMC does not have to be installed anew when module updates become available.

## Options



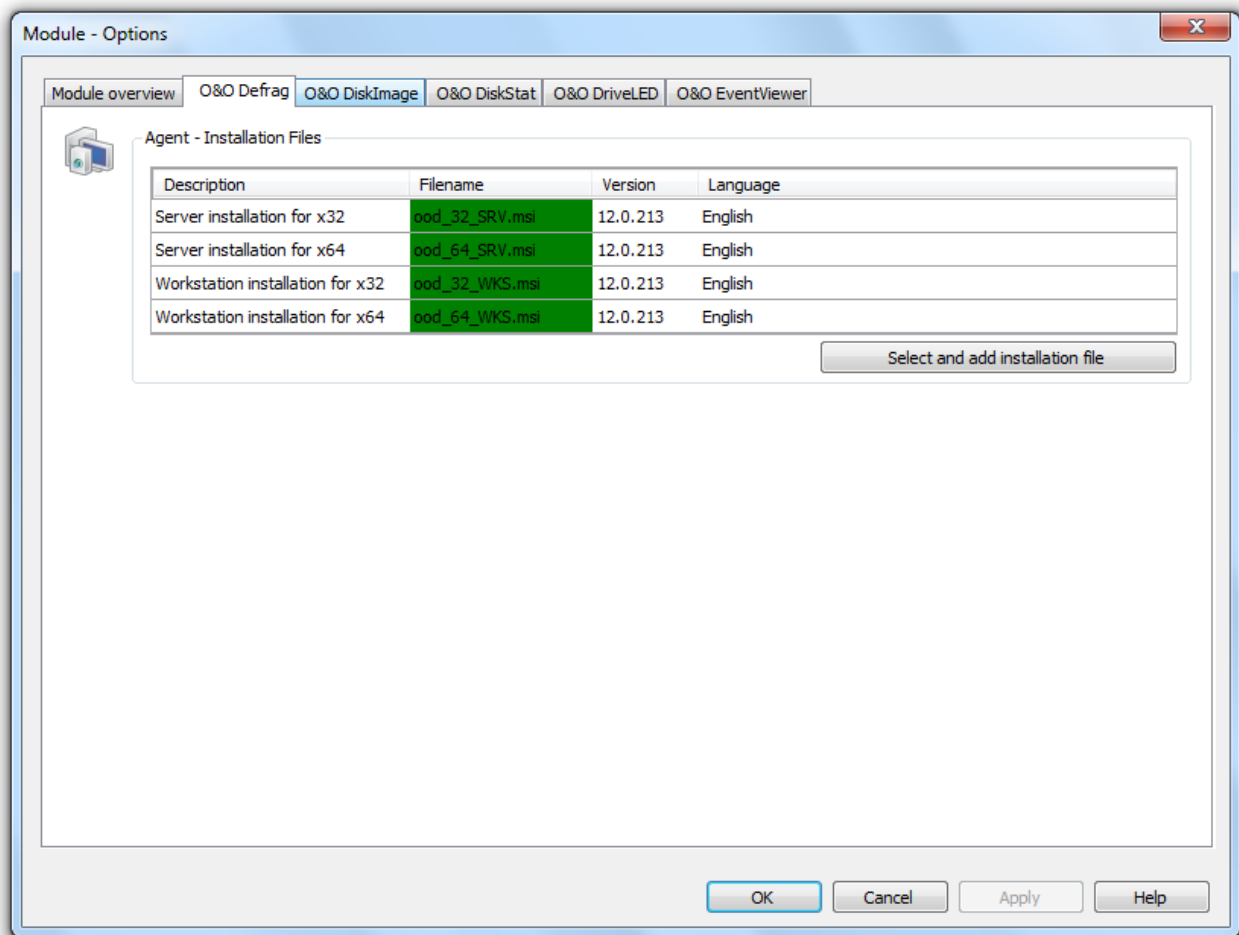
Overview of modules

### Update the installation of the module

If you're having problems with individual modules or are running a software update, you can take the installation file out of the installation folder and restore it to the database.

1. Under **Tools** select **Modul options** from the items in the menu.
2. You can select the installation of each module register, e.g. of O&O Defrag, which you want to update.
3. Afterwards, click on **Select and add installation file**.
4. Then select the equivalent \*.msi file in the dialogue. The old \*.msi will then be replaced.

## Options



Overview of installation files, e.g. O&O Defrag

## Tutorial options

Under **Tools/Tutorial options** you have several different tutorials at your disposal. You can either select the general tutorial on the OOEMC or select a specific tutorial of a module. The tutorials consist of continuous dialogue boxes, which offer step-by-step guidance.

1. If you want to start a tutorial, select the desired topic from the list and click on **Start tutorial**.
2. If you want to end a tutorial, retrieve the desired topic from the **tutorial options** and click on **Stop tutorial**.

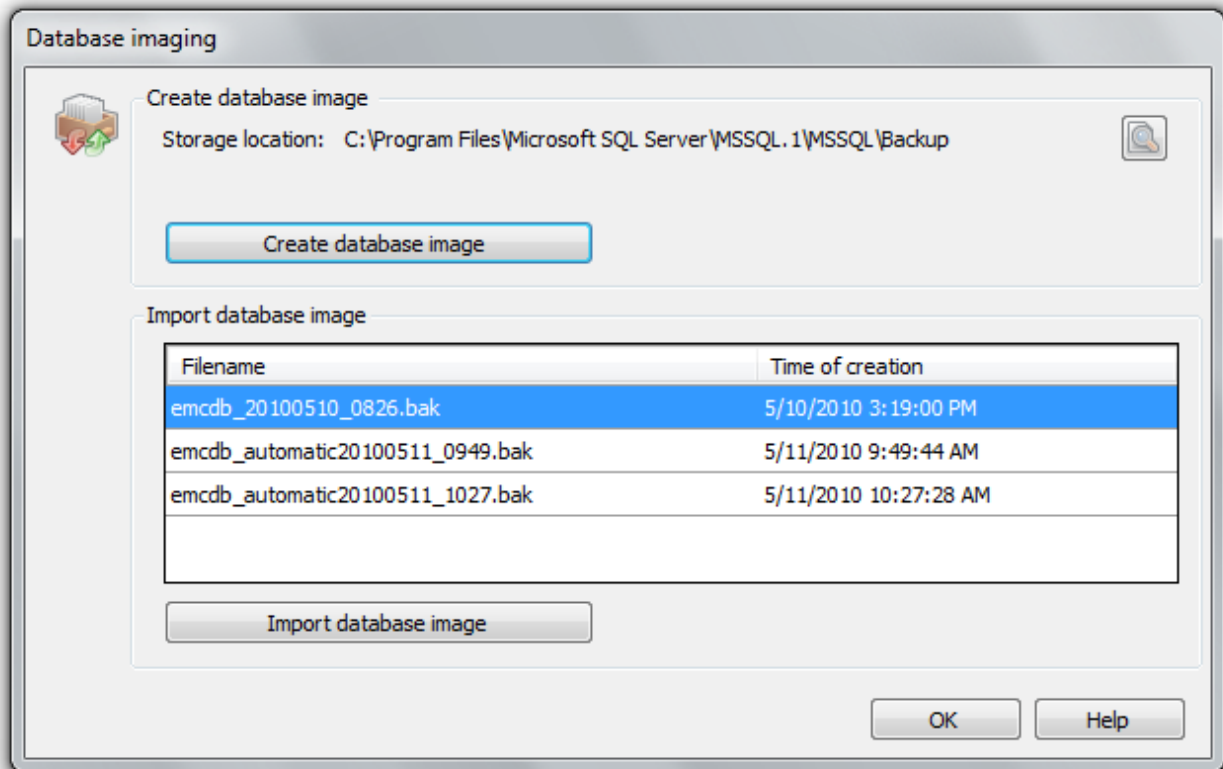


## Imaging the database

The OOEMC offers you the possibility to image your database, and if needed, to restore it once again. An image lets you create a copy of your database and is then stored at a location of your choice.

1. If you want to create an image of your database, click under **Tools** on **Database imaging**.
2. First, enter the storage location for the image, then click on **Create database image**.

If you want to restore an image, select **Import database image** and confirm with **OK**.



Run database imaging

## Maintenance and repair

If you're using Microsoft SQL Server Express and exceed the database size of 3,5 GB, you will receive warnings from OEMC. Should this happen, please contact our technical support: [support@oo-software.com](mailto:support@oo-software.com).

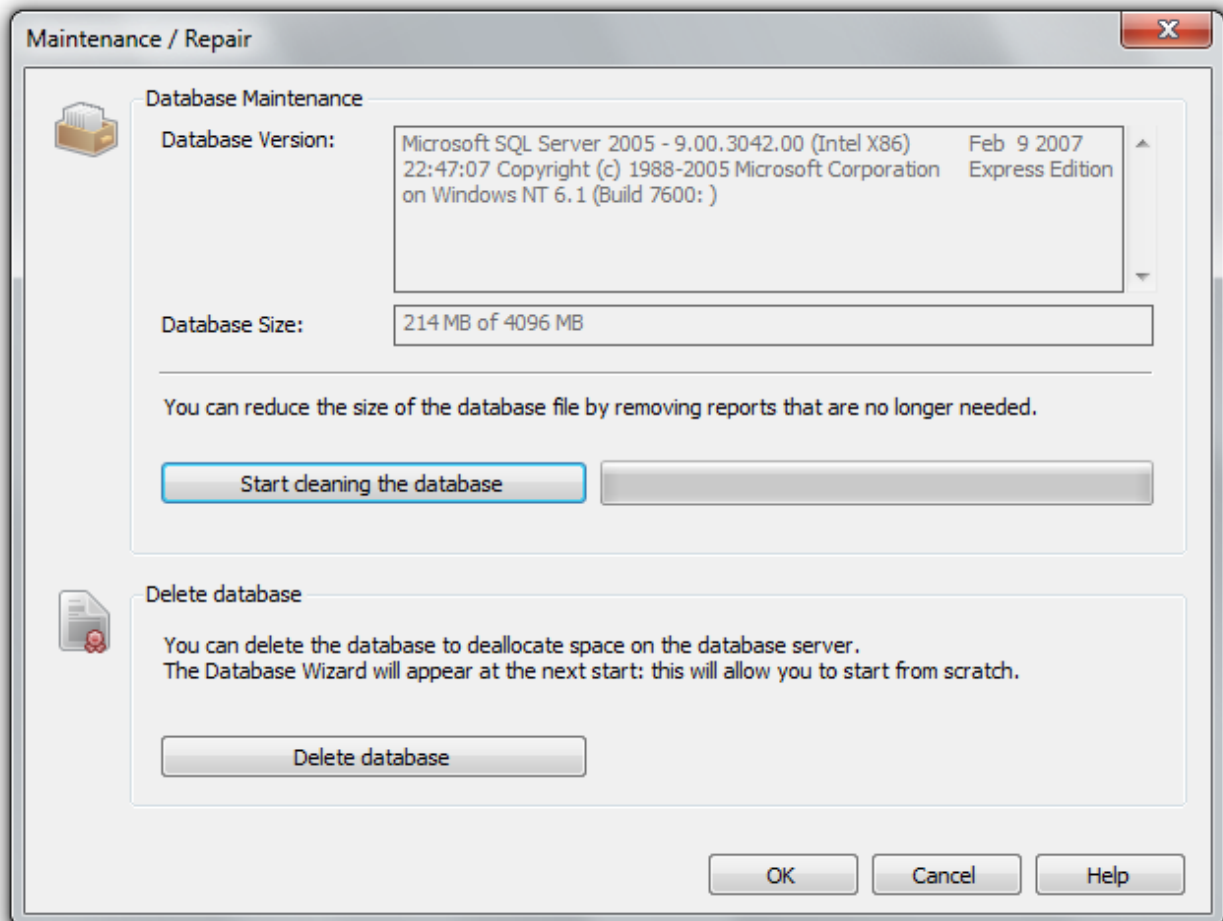
### Delete database

- To delete the used database, click on the menu bar under **Tools** on **Maintenance and Repair** and then on **Delete database**. The Create Database Wizard will show up on the next start of O&O Enterprise Management Console and you will be able to create a database without a problem.

### Clean up database

You can remove old data from the database to make more room in your database, and to reduce the file size. Deleted entries will be removed, as a result, the data volume is reduced.

- To clean up your database, click on the menu bar under **Tools** on **Maintenance and repair** and then on **Clean up database**.

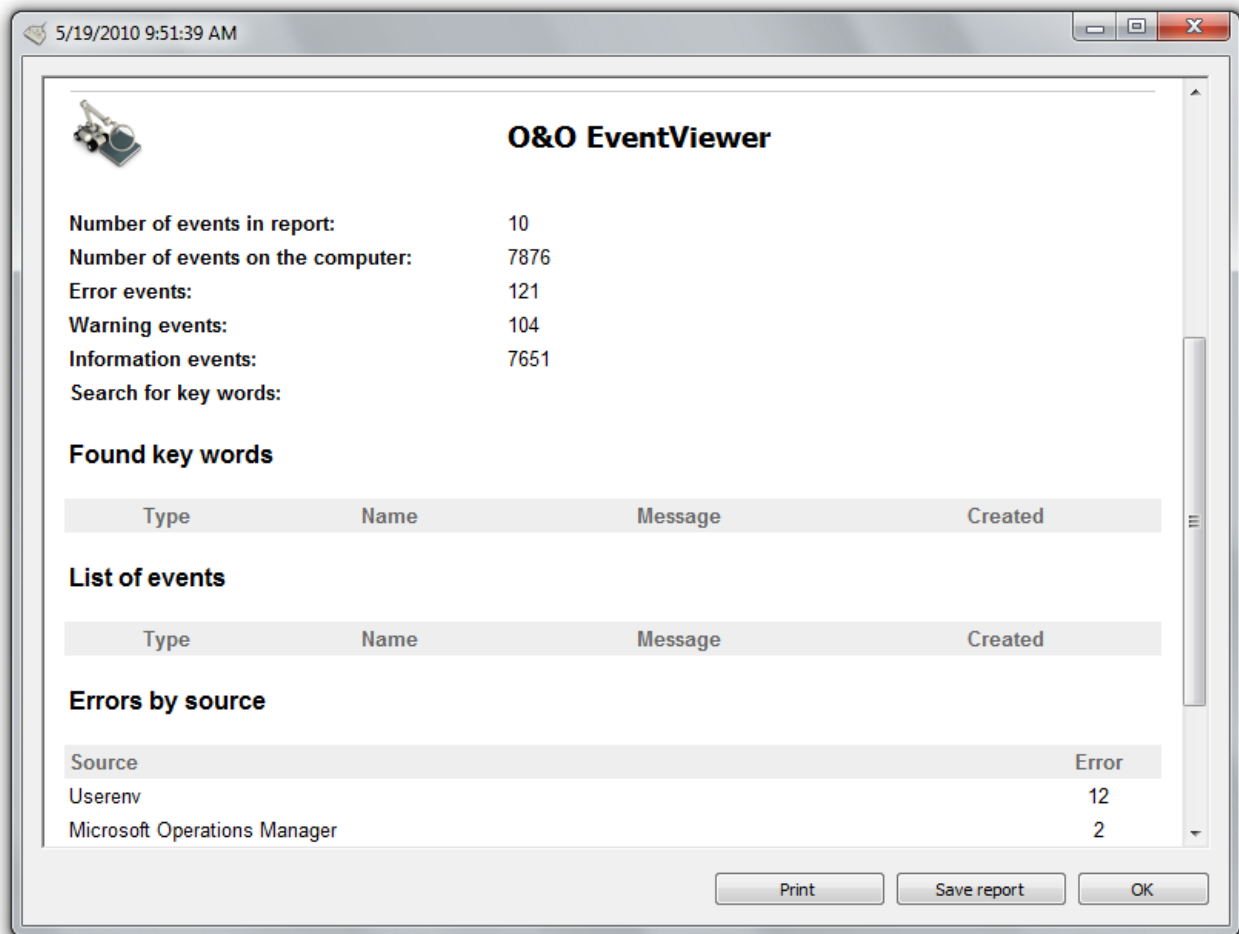


Maintenance and repair settings

## Apply O&O EventViewer

As a rule, the module "O&O EventViewer" is included in the OOEMC. You can use this module unlimited times and assign it to unlimited computers. The O&O Event Viewer retrieves events from the Windows Event Viewer and logs hardware and software errors in a report. In the Job Assistant, you can define search criteria so that the collection of Windows events from the target computer occurs in accordance with established rules.

Events that were recorded by applications or programs may, for example, be file errors, valid and invalid logon attempts and events for use of resources such as creating, opening, or deleting files. At system startup, the failed loading of a device driver or other system component is also recorded.



Log about events

## Frequently asked questions

### 1. It's noted in a report that a computer has not been contacted.

There are a number of reasons why the OOEMC Control Agent for allocating a job or remote installation reports that a computer is not available:

1. Target computer is turned off.
2. You don't have the required administrator permissions on the target computer.
3. A firewall on the target computer is blocking access. Open Port 50400 in the Windows Firewall for job allocation. The Ports for "File and Print Sharing" (TCP 139, TCP 445, UDP 137, UDP 138) and the WMI (TCP/135) must be opened for remote installation. See also chapter "Firewalls".

If you're using a firewall from another manufacturer, consult the program's own Help site.

### 2. I can't add a computer to the computer list.

If you're unable to add a computer to the selection, please check the terms of your license. You have possibly reached the maximum number of "clients" available to you. If this is the case, you should either purchase additional licenses or replace some of the computers that you possibly no longer need to manage in the list.

- Under **Tools/Licensing**, you have an overview of all licenses, both available and already in use.

### 3. How can I create a job for a site?

Example: Create a job for site using O&O DiskImage.

1. Select a site in the tree structure on the left side of the window. In the window above on the right you can see the folder Sites.
2. Select the site you want and click on **Add** under **Job** in the lower right window.
3. If no job is selected, you'll have to create a new one in the file menu under **New**.

### 4. How can I remove a job?

When you no longer need a job, you can remove it by right-clicking the job and then clicking **Remove**. The job will then no longer be run on any computer.

### 5. How can I see a report?

In every module folder you can find all the reports listed according to date. In the reports themselves you can find information such as status, computer name, action, and date. To see the report, click on the one you wish to see on the list. It will then appear in a separate program window.

### 6. No computer in the network is found during the computer search.

If no computer appears under Find Computer, you might not be registered in the domain or possess the required permissions for reading any domain information.

## Support and Contact

To receive more information about O&O Enterprise Management Console, please visit our website <http://www.oo-software.com> and get the latest information about product developments and support. Also included on our website are regularly updated FAQs and Knowledge Bases that address the most common issues regarding our products.

All registered customers receive installation support, free of charge, for the first 30 days after registration. When contacting our support team, please remember to have your registration code available.

In addition, it may be helpful to read the frequently asked questions (FAQ) section of the website before contacting our Support Team. It's always possible that your specific question or problem has already been addressed.

### O&O Software

Address: Am Borsigturm 48  
13507 Berlin  
Germany

Telephone: +49(0)30 4303 4303

Fax: +49(0)30 4303 4399

Web: <http://www.oo-software.com>

e-mail [support@oo-software.com](mailto:support@oo-software.com)

[sales@oo-software.com](mailto:sales@oo-software.com)

## Authorized resellers

Our authorized reseller partners in over 30 countries stand ready to assist you with answers to all questions regarding the licensing and purchase of our software products. Their names and addresses may be found on our website, under the heading "Partner – Find Resellers". We would also be more than happy to assist you in finding the partner closest to you.

# End user license agreement 2.6 (EULA)

O&O Software

General and Specialized Section

## General Section

IMPORTANT – PLEASE READ CAREFULLY

This End User License Agreement (EULA) is organized into 2 sections: a general part, which is valid for all O&O products, and a specialized part, which includes the particular terms of each corresponding product. By accepting both parts of the license terms they automatically form part of your contract with O&O Software, Am Borsigturm 48, 13507 Berlin. If you have any questions regarding this contract and the license terms, our Service Team is available to help you under [info@oo-software.com](mailto:info@oo-software.com).

The software product is protected by copyright laws and international copyright contracts as well as other laws and agreements concerning intellectual property.

### 1. Object and form of delivery

- (1) You receive the software covered by the contract in executable form (Binary code) together with the relevant documentation released by O&O according to Section (6).
- (2) The software provides the range of functions described in the given documentation. The documentation regarding functionality may be consulted prior to concluding the contract in the Internet presentation on the following site <http://www.oo-software.com/>.
- (3) Delivery will be made according to the way in which you have purchased the software, either by having a disk directly handed over or sent by mail to an address you have supplied or through the forwarding of license as well as any required download information to a given E-mail address.
- (4) If you are currently receiving updates as part of a maintenance agreement, these will continue to be supplied in the same way as the initial software delivery, i.e., for a disk sent by mail, a disk containing the update will be sent to the given address: for electronically delivered keys, a key for downloading updates will be sent to the given E-mail address.
- (5) Changes to the delivery or E-mail address can only be taken into consideration when they are supplied in writing or by E-mail to the address or E-mail address indicated on <http://www.oo-software.com> at least two weeks before delivery of the update.
- (6) A printed copy of the documentation will not be included in delivery. The documentation consists primarily of electronic aids.

### 2. Requirements for application (system requirements)

- (1) Installation of the software is not part of the agreement.
- (2) Depending on the software, there are certain system requirements that must be met in order to use the software according to the terms of this contract. These will be defined according to each product in the specialized section of this contract.

### 3. Rights of use, including test versions, unauthorized transfer, and application

- (1) O&O grants you, upon payment of the agreed one-time fee, a permanent, spatially unlimited and non-exclusive right to use the software.

- (2) Test versions – if you have installed a test version of one of our products taken from the O&O Website <http://www.oo-software.com/>, the right of use will be, according to the program, for a limited time only and/or technically restricted.
- (3) One copy of the software is entitled to be used on a maximum of one (1) output device/workstation simultaneously.
- (4) If you want to use the software on more than one output device/workstation, the rights of use must be extended accordingly. To find out which O&O products are also available as volume licenses, please consult (<http://www.oo-software.com/>). The separate price list concerning O&O Volume Licenses will apply to extending the rights of use without redelivery.
- (5) Any use beyond that agreed upon in the contract is one in violation of the contract. In such a case, you are required to report this use that exceeds the rights of use to the supplier without any delay. The parties will then try to bring about an agreement for extending the rights of use. For the duration of the excessive usage, i.e., until the conclusion of such an agreement or the cessation of the excessive usage, you are required to pay compensation for this excessive usage according to the amount indicated in our price lists. The amount of compensation will be calculated on the basis of a four year, straight-line depreciation. If we are not informed of the excessive usage, a contract penalty in the amount three times the price of the usage indicated in the price list will be due O&O.
- (6) You are entitled to create a backup copy of the software and to conduct ordinary data backups. The creation of more copies than the amount needed for the backing up of any future usage (including the backup copies and data backups) is not allowed.
- (7) Copyrights and other trademarks within the software may not be altered or removed. They must be transferred onto every copy of the software.
- (8) Unauthorized transfer – only when you have purchased the software with an accompanying disk are you permitted to transfer it and then, only under the following conditions: a resale of the software is only permitted when it involves an entire software copy, i.e., by surrendering your own usage of the purchased copy, you are entitled to transfer these rights of use of the disk onto a third party according to the terms of the agreement existing between you and O&O. When making such a transfer, you are required to hand over to the third party all materials related to the software that are covered in the contract and to delete the software from any storage volumes (e.g., hard disks) remaining in your possession.
- (9) Unauthorized rental and service – The purchase of this contract does not entitle you to any public transfer or rental of the software. You are also not entitled to include the software as part of your providing services for and in the presence of any third parties. You may purchase an appropriate license from O&O for doing this.

#### **4. Payment**

- (1) The prices are given with the corresponding sales taxes included, unless otherwise indicated.
- (2) Test versions – Downloads of test versions offered by O&O are provided free of charge, unless otherwise indicated.
- (3) If you receive updates of your programs as part of a Maintenance Agreement, the terms of payment in these contracts will apply to these Maintenance Agreements.
- (4) O&O is entitled to forward any data it has received onto third parties requiring it for purposes of collection.
- (5) Until payment is made in full, O&O retains possession of all rights, particularly those concerning copyrighted rights of use, on the materials included in this contract. O&O is specifically entitled to cancel a contract, for example, when your payment is delayed, it prohibits the further using of the software and demands the surrendering of

all copies or this being impossible, to demand their deletion. Should a third party have access to the object of purchase before payment is completed for the contractual software, you are required to inform this third party about the object being the property of O&O and to inform O&O, in writing, about the third party's access.

### **5. Material defect and defect of title**

- (1) The software package or download you receive is free of any material defect or defect of title.
- (2) A material defect exists when the software is unable to be used as described in the documentation appearing on the website and included in delivery or available for downloading.

O&O is constantly checking to make sure that other sources are not misrepresenting the functions and properties of the software as described in the documentation. You can therefore assume that any descriptions beyond those found in the software documentation have not originated with O&O and are also unknown to it. Please inform O&O if you learn of any software descriptions that include functions and properties not mentioned in the documentation.

- (3) Please inform O&O if you learn of any software descriptions that include functions and properties not mentioned in the documentation.
- (4) Any claims concerning defects of material and/or title related to the software have a limitation period of two years subsequent to delivery of the program or transmission of the serial number needed for downloading. If you are not a private individual, the warranty period is shortened to one year.

If O&O has fraudulently concealed a material defect, a three year limitation period will cover claims related to this defect.

Payment for compensation that you might have been entitled to as a result of cancellation or an abatement can be refused upon expiration of the limitation period.

- (5) You are required to inform O&O, in writing if possible, of any defects that arise immediately upon their discovery. While doing so you should also describe, as well as possible, how the defect is communicated, the effect it has on the program, and under which circumstances it occurs.
- (6) Should defects be reported to O&O within the limitation period, it will undertake a cure free of charge.
- (7) As part of the cure, the corrected software will be redelivered as agreed. An on-site analysis and correction of the error on your system will not take place.

O&O assumes the ensuing expenses for the cure, in particular the costs for transport, labor, and material. You are personally responsible for installation. O&O specifically does not assume on-site installation as part of its obligation with regard to defects of material or title.

Should a change of the program be required as part of the cure, O&O will make the necessary changes in the documentation without any charges.

- (8) After the unsuccessful expiration of a deadline you set for cure, you can cancel the contract or reduce the purchase price and demand compensation instead of service or the replacement of any futile expenditures.
- (9) A deadline is not required when
  - a) O&O refuses both kinds of cure, even if it is entitled to do so as a result of the arising expenses or
  - b) the cure is impossible or
  - c) the cure is unacceptable to you or



d) the cure is unsuccessful.

A subsequent improvement is considered a failure after the second unsuccessful attempt unless there is something particular about the type of software or the defect itself or the surrounding circumstances that would indicate otherwise.

(10) You are not entitled to cancel the contract if the defect is negligible, nor may you, in this event, demand compensation instead of full service.

(11) In the event of cancellation, compensation is due for any uses made. The compensation for use will be based on a four year, straight-line depreciation of the purchase price.

(12) As a result of the abatement, the purchase price will be reduced by the amount which is calculated for deducting the defect from the value of the software. The standard used will be its value at the time the contract was concluded. The amount, when necessary, is to be calculated by estimation. As a result of this reduction, any amount larger than that paid for the reduced purchase price will be refunded.

If it turns out that a reported problem did not arise as a result of a defect in the software and if you can be accused of malice or gross negligence, then O&O is entitled to invoice you for: 1) services; 2) the expenses for analysis and; 3) correction of the problem, according to the amount stated in the price list.

(14) The seller's warranty is canceled when changes are made on the software without expressed written consent or when the software is not used as intended or used in an improper software environment, unless you can prove that these facts had nothing to do with the problems that occurred.

## **6. Limitation of compensation**

(1) O&O is liable for compensation for every legal ground to the extent described in the following provisions.

(2) The extent of liability of O&O for damages caused by malice or gross negligence arising from O&O itself or one of its vicarious or legal agents is unlimited.

(3) There is no limit to the extent of liability of O&O or any of its legal or vicarious agents for damages involving injury to life, physical well-being or health, or for simple breach of duty.

(4) There is unlimited liability for damages caused by serious organizational fault on the part of O&O as well as for damages arising from a missing guaranteed characteristic.

(5) For the breach of an essential contractual duty, O&O is liable for damages normally foreseen in a contract when none of the instances in provisions (2) – (4) applies.

(6) Any further liability for compensation is excluded, specifically excluded is liability without fault.

(7) Liability as defined by the product liability law remains untouched.

(8) If damage can be traced to have arisen through a fault on the part of O&O as well as on the part of yourself, you must have your share of the fault evaluated.

You are responsible for making a standard backup of your data at least once a day. For data loss caused by O&O, O&O is only liable for the expense of duplicating the data on your backup copies that need to be created and for the restoration of data which would have also been lost during a standard backup procedure.

## **7. Final provisions**

(1) You may only balance claims from O&O with indisputable or legally valid claims.

(2) Changes and amendments to this contract must be made in writing. This also applies to changes to this provision.

(3) The contract is subject to German law. The uniform UN purchasing law (CISG) as well as the UNIDROIT Factoring Agreement of Ottawa do not apply.

(4) Any general terms and conditions on your part will not be applied.

In the event you are not a private individual or a resident of the Federal Republic of Germany, we agree that the district court in Berlin will be the competent court for litigation arising from this contract.

## 8. Contact

If you have any questions concerning the O&O Software License Agreement or wish to speak with O&O, please get in touch with us.

O&O Software GmbH, Am Borsigturm 48, 13507 Berlin, Germany.

Telephone: +49 (0)30 4303 4303, Fax: +49 (0)30 4303 4399

E-Mail [info@oo-software.com](mailto:info@oo-software.com) / [sales@oo-software.com](mailto:sales@oo-software.com), Web [www.oo-software.com](http://www.oo-software.com)

## Special section

### O&O BlueCon

Important note on the Windows PE Start CD

The Microsoft® Windows™ Preinstallation Environment contained in this hardware or this software may only be used for starting, diagnosing, setup, restoration, installation, configuration, testing or disaster recovery.

NOTE: THIS SOFTWARE CONTAINS A SECURITY FEATURE THAT WILL CAUSE END USER'S SYSTEM TO REBOOT WITHOUT PRIOR NOTIFICATION TO THE END USER AFTER 72 HOURS OF CONTINUOUS USE.

Amendment to: 2. Requirements for application (system requirements)

The software requires the Windows 2000 (all Editions), Windows Server 2003 (all Editions), Windows XP (all Editions), Windows Vista (all Editions) or Windows Server 2008 (all Editions) operating systems. Usage within the terms of this contract is not achieved without the application of these operating systems.

The product at hand can only be employed according to the acquired license. The following license types exist for O&O BlueCon:

#### O&O BlueCon Admin Edition

You are authorized to install and use the software product on all computers a) in the possession of the company (legal person or natural person(s) in the case of corporations) owning the license and b) all located at a single site. This license is bound to a single natural person and is non-transferable.

#### O&O BlueCon Tech Edition

You are authorized to install and use the software product on all computers. This includes computers that do not belong to the company owning the license (also known as Service Technician's License). This license is bound to a single natural person and is non-transferable.

### O&O CleverCache

Amendment to: 2. Requirements for application (system requirements)

O&O CleverCache Professional Edition

The software requires the Windows XP (all Editions), Windows Vista (all Editions) or Windows 7 (all editions) operating systems. Usage within the terms of this contract is not achieved without the application of these operating systems.

O&O CleverCache Server Edition

The software requires Windows Server 2003 (all Editions), Windows XP (all Editions), Windows Vista (all Editions), Windows Server 2008 (all Editions), Windows 7 (all Editions) or Windows Server 2008 R2 (all Editions) operating systems. Usage within the terms of this contract is not achieved without the application of these operating systems.

**O&O Defrag**

Amendment to: 2. Requirements for application (system requirements)

O&O Defrag Professional Edition

The software requires the Windows 2000 Professional, Windows XP (all Editions), Windows Vista (all Editions) or Windows 7 (all editions) operating systems. Usage within the terms of this contract is not achieved without the application of these operating systems. Control of the program through a network management is not possible.

O&O Defrag Workstation Edition

The software requires the Windows 2000 Professional, Windows XP (all Editions), Windows Vista (all Editions) or Windows 7 (all editions) operating systems. Usage within the terms of this contract is not achieved without the application of these operating systems. The O&O Defrag Workstation Edition may be used on computers with or without the user interface. You are entitled to control this program over the separately obtainable network manager.

O&O Defrag Server Edition

The software requires Windows 2000 (all Editions), Windows Server 2003 (all Editions), Windows XP (all Editions), Windows Vista (all Editions), Windows Server 2008 (all Editions), Windows 7 (all Editions) or Windows Server 2008 R2 (all Editions) operating systems. Usage within the terms of this contract is not achieved without the application of these operating systems. The O&O Defrag Server Edition may be used on computers with or without the user interface. You are entitled to control this program over the separately obtainable network manager.

O&O Defrag Virtual Machine Edition

The software may only be used on the appropriate operating system in accordance with the previously mentioned conditions for the Workstation and Server Editions. You must own a minimum of one Server Edition to use a Virtual Machine Edition.

**O&O DiskImage**

Important note on the Windows PE Start CD

This note is only valid for the O&O DiskImage Professional and the Server Edition Start CD. The Microsoft® Windows™ Preinstallation Environment (Windows PE) is not a part of O&O DiskImage Express, Special and the Workstation Edition!

The Microsoft® Windows™ Preinstallation Environment contained in this hardware or this software may only be used for starting, diagnosing, setup, restoration, installation, configuration, testing or disaster recovery.

NOTE: THIS SOFTWARE CONTAINS A SECURITY FEATURE THAT WILL CAUSE END USER'S SYSTEM TO REBOOT WITHOUT PRIOR NOTIFICATION TO THE END USER AFTER 72 HOURS OF CONTINUOUS USE.

Amendment to: 2. Requirements for application (system requirements)

O&O DiskImage Express Edition

The software requires the Windows 2000 Professional, Windows XP (all Editions), Windows Vista (all Editions) or Windows 7 (all editions) operating systems. Usage within the terms of this contract is not achieved without the application of these operating systems. Control of the program through a network management is not possible.

O&O DiskImage Professional Edition and Special Edition

The software requires the Windows 2000 Professional, Windows XP (all Editions), Windows Vista (all Editions) or Windows 7 (all editions) operating systems. Usage within the terms of this contract is not achieved without the application of these operating systems. Control of the program through a network management is not possible.

O&O DiskImage Workstation Edition

The software requires the Windows 2000 Professional, Windows XP (all Editions), Windows Vista (all Editions) or Windows 7 (all editions) operating systems. Usage within the terms of this contract is not achieved without the application of these operating systems. The O&O DiskImage Workstation Edition may be used on computers with or without the user interface. You are entitled to control this program over the separately obtainable network manager.

O&O DiskImage Server Edition

The software requires Windows 2000 (all Editions), Windows Server 2003 (all Editions), Windows XP (all Editions), Windows Vista (all Editions), Windows Server 2008 (all Editions), Windows 7 (all Editions) or Windows Server 2008 R2 (all Editions) operating systems. Usage within the terms of this contract is not achieved without the application of these operating systems. The O&O DiskImage Server Edition may be used on computers with or without the user interface. You are entitled to control this program over the separately obtainable network manager.

O&O DiskImage Virtual Machine Edition

The software may only be used on the appropriate operating system in accordance with the previously mentioned conditions for the Workstation and Server Editions. You must own a minimum of one Server Edition to use a Virtual Machine Edition.

Amendment to: 3. Rights of use, including test versions, unauthorized transfer, and application

Creation and restoration of images

The source computer and each target computer are required to hold licenses, to create and restore images using O&O DiskImage. One license is sufficient under the previously mentioned terms, if the source and the target computer is one non-virtual workstation. Each virtual machine is seen as an independent computer; in other words, each virtual machine needs its own license.

**O&O DiskRecovery**

Amendment to: 2. Requirements for application (system requirements)

The software requires Windows 2000 (all Editions), Windows Server 2003 (all Editions), Windows XP (all Editions), Windows Vista (all Editions), Windows Server 2008 (all Editions), Windows 7 (all Editions) or Windows Server 2008 R2 (all Editions) operating systems. Usage within the terms of this contract is not achieved without the application of these operating systems.

## End user license agreement 2.6 (EULA)

The product at hand can only be employed according to the acquired license. The following license types exist for O&O DiskRecovery:

### O&O DiskRecovery Personal Edition

You are authorized to install and use the software product on only one computer. This should be used wholly in conjunction with all hardware in your possession, i.e. this license may not be used to provide a service to a third party. Other limitations may apply in the software itself. Please consult the software documentation for more information on these limitations.

### O&O DiskRecovery Admin Edition

You are authorized to install and use the software product on all computers

a) in the possession of the company (legal person or natural person(s) in the case of corporations) owning the license and b) all located at a single site. This should be used wholly in conjunction with all hardware in your possession, i.e. this license may not be used to provide a service to a third party. This license is bound to a single natural person and is non-transferable.

### O&O DiskRecovery Tech Edition

You are authorized to install and use the software product on all computers. This includes computers that do not belong to the company owning the license (also known as Service Technician's License). This license is bound to a single natural person and is non-transferable.

## **O&O DiskStat**

Amendment to: 2. Requirements for application (system requirements)

### O&O DiskStat Professional Edition

The software requires the Windows 2000 Professional, Windows XP (all Editions), Windows Vista (all Editions) or Windows 7 (all editions) operating systems. Usage within the terms of this contract is not achieved without the application of these operating systems.

### O&O DiskStat Workstation Edition

The software requires the Windows 2000 Professional, Windows XP (all Editions), Windows Vista (all Editions) or Windows 7 (all editions) operating systems. Usage within the terms of this contract is not achieved without the application of these operating systems. The O&O DiskStat Workstation Edition may be used on computers with or without the user interface. You are entitled to control this program over the separately obtainable network manager.

### O&O DiskStat Server Edition

The software requires Windows 2000 (all Editions), Windows Server 2003 (all Editions), Windows XP (all Editions), Windows Vista (all Editions), Windows Server 2008 (all Editions), Windows 7 (all Editions) or Windows Server 2008 R2 (all Editions) operating systems. Usage within the terms of this contract is not achieved without the application of these operating systems.

### O&O DiskStat Virtual Machine Edition

The software may only be used on the appropriate operating system in accordance with the previously mentioned conditions for the Workstation and Server Editions. You must own a minimum of one Server Edition to use a Virtual Machine Edition.

## **O&O DriveLED**

## End user license agreement 2.6 (EULA)

Amendment to: 2. Requirements for application (system requirements)

### O&O DriveLED Professional Edition

The software requires the Windows XP (all Editions), Windows Vista (all Editions) or Windows 7 (all editions) operating systems. Usage within the terms of this contract is not achieved without the application of these operating systems. Control of the program through a network management is not possible.

### O&O DriveLED Workstation Edition

The software requires the Windows XP (all Editions), Windows Vista (all Editions) or Windows 7 (all editions) operating systems. Usage within the terms of this contract is not achieved without the application of these operating systems. The O&O DriveLED Workstation Edition may be used on computers with or without the user interface. You are entitled to control this program over the separately obtainable network manager.

### O&O DriveLED Server Edition

The software requires Windows Server 2003 (all Editions), Windows XP (all Editions), Windows Vista (all Editions), Windows Server 2008 (all Editions), Windows 7 (all Editions) or Windows Server 2008 R2 (all Editions) operating systems. Usage within the terms of this contract is not achieved without the application of these operating systems. The O&O DriveLED Server Edition may be used on computers with or without the user interface. You are entitled to control this program over the separately obtainable network manager.

### O&O DriveLED Virtual Machine Edition

The software may only be used on the appropriate operating system in accordance with the previously mentioned conditions for the Workstation and Server Editions. You must own a minimum of one Server Edition to use a Virtual Machine Edition.

## **O&O Enterprise Management Console**

Important note on the Microsoft SQL Server

This product uses the Microsoft SQL Server or Microsoft SQL Server Express Edition. To the extent that these programs are part of the installation of this product, the terms of their licensing related to the use of this software will also apply to the terms of this agreement.

The use of Microsoft SQL Server Express Edition is free of charge in conjunction with this product. The purchase of licenses for O&O Enterprise Management Console and related products is separate from any possible purchase of SQL Server products.

Amendment to: 2. Requirements for application (system requirements)

The software requires Windows Server 2003 (all Editions), Windows XP (all Editions), Windows Vista (all Editions), Windows Server 2008 (all Editions), Windows 7 (all Editions) or Windows Server 2008 R2 (all Editions) operating systems. Usage within the terms of this contract is not achieved without the application of these operating systems.

## **O&O EventViewer**

Amendment to: 2. Requirements for application (system requirements)

### O&O EventViewer Workstation Edition

The software requires the Windows 2000 Professional, Windows XP (all Editions), Windows Vista (all Editions) or Windows 7 (all editions) operating systems. Usage within the terms of this contract is not achieved without the application of these operating systems. The O&O EventViewer Workstation Edition may be used on computers with or

without the user interface. You are entitled to control this program over the separately obtainable network manager.

#### O&O EventViewer Server Edition

The software requires Windows 2000 (all Editions), Windows Server 2003 (all Editions), Windows XP (all Editions), Windows Vista (all Editions), Windows Server 2008 (all Editions), Windows 7 (all Editions) or Windows Server 2008 R2 (all Editions) operating systems. Usage within the terms of this contract is not achieved without the application of these operating systems.

#### O&O EventViewer Virtual Machine Edition

The software may only be used on the appropriate operating system in accordance with the previously mentioned conditions for the Workstation and Server Editions. You must own a minimum of one Server Edition to use a Virtual Machine Edition.

#### **O&O ISOBoot**

Important note on the use of O&O ISOBoot

The program overwrites the target data volume (these include among other things rewritable CDs or USB sticks). Please make sure that no data you need is left on the target data volume. Overwriting data cannot be reversed!

O&O formally declares that it is not responsible for damages arising from the improper use of O&O ISOBoot.

Amendment to: 2. Requirements for application (system requirements)

The software requires the Windows 2000 (all editions), Windows Server 2003 (all editions), Windows XP (all editions), Windows Vista (all editions), Windows 7 (all editions) or Windows Server 2008 (all editions) operating systems. Usage within the terms of this contract is not achieved without the application of these operating systems.

Amendment to: 4. Payment

O&O demands no fee for the use of O&O ISOBoot. In addition, a fee for this license and this program may not be demanded by any Third Parties, unless this is done with the expressed approval of O&O. When in doubt, please get in touch with us.

#### **O&O MediaRecovery**

Amendment to: 2. Requirements for application (system requirements)

The software requires Windows 2000 (all Editions), Windows Server 2003 (all Editions), Windows XP (all Editions), Windows Vista (all Editions), Windows Server 2008 (all Editions), Windows 7 (all Editions) or Windows Server 2008 R2 (all Editions) operating systems. Usage within the terms of this contract is not achieved without the application of these operating systems.

#### **O&O PartitionManager**

Important note on the Windows PE Start CD

The Microsoft® Windows™ Preinstallation Environment contained in this hardware or this software may only be used for starting, diagnosing, setup, restoration, installation, configuration, testing or disaster recovery.

NOTE: THIS SOFTWARE CONTAINS A SECURITY FEATURE THAT WILL CAUSE END USER'S SYSTEM TO REBOOT WITHOUT PRIOR NOTIFICATION TO THE END USER AFTER 72 HOURS OF CONTINUOUS USE.

Amendment to: 2. Requirements for application (system requirements)

### O&O PartitionManager Professional Edition

The software requires the Windows 2000 Professional, Windows XP (all Editions), Windows Vista (all Editions) or Windows 7 (all editions) operating systems. Usage within the terms of this contract is not achieved without the application of these operating systems.

### O&O PartitionManager Server Edition

The software requires Windows 2000 (all Editions), Windows Server 2003 (all Editions), Windows XP (all Editions), Windows Vista (all Editions), Windows Server 2008 (all Editions), Windows 7 (all Editions) or Windows Server 2008 R2 (all Editions) operating systems. Usage within the terms of this contract is not achieved without the application of these operating systems.

### **O&O RegEditor**

Important note for working with the Microsoft Windows Registry

Before making changes to the Microsoft Windows Registry (in the following Registry), you should prepare a backup copy of the Registry and ensure that you'll be able to restore the Registry if a problem should arise.

O&O formally declares that it is not responsible for damages arising from the improper use of O&O RegEdit. Changes to the Registry should only be made by experienced users who are aware of the consequences of such changes. A defective Registry can influence the entire stability of the system and lead to a crash of the computer or make it unable to start. This can further lead to loss of data.

Amendment to: 2. Requirements for application (system requirements)

The software requires the Windows 2000 (all Editions), Windows Server 2003 (all Editions), Windows XP (all Editions), Windows Vista (all Editions) or Windows Server 2008 (all Editions) operating systems. Usage within the terms of this contract is not achieved without the application of these operating systems.

Amendment to: 4. Payment

O&O demands no fee for the use of this license. In addition, a fee for this license and this program may not be demanded by any Third Parties, unless this is done with the expressed approval of O&O. When in doubt, please get in touch with us.

### **O&O RescueBox**

Important note on the Windows PE Start CD

The Microsoft® Windows™ Preinstallation Environment contained in this hardware or this software may only be used for starting, diagnosing, setup, restoration, installation, configuration, testing or disaster recovery.

NOTE: THIS SOFTWARE CONTAINS A SECURITY FEATURE THAT WILL CAUSE END USER'S SYSTEM TO REBOOT WITHOUT PRIOR NOTIFICATION TO THE END USER AFTER 72 HOURS OF CONTINUOUS USE.

Amendment to: 2. Requirements for application (system requirements)

In addition, a fee for this license and this program may not be demanded by any Third Parties, unless this is done with the expressed approval of O&O. Usage within the terms of this contract is not achieved without the application of these operating systems.

The product at hand can only be employed according to the acquired license. The following license types exist for O&O RescueBox:

### O&O RescueBox Personal Edition



## End user license agreement 2.6 (EULA)

You are authorized to install and use the software product on only one computer. This should be used wholly in conjunction with all hardware in your possession, i.e. this license may not be used to provide a service to a third party. Other limitations may apply in the software itself. Please consult the software documentation for more information on these limitations.

### O&O RescueBox Admin Edition

You are authorized to install and use the software product on all computers a) in the possession of the company (legal person or natural person(s) in the case of corporations) owning the license and b) all located at a single site. This should be used wholly in conjunction with all hardware in your possession, i.e. this license may not be used to provide a service to a third party. This license is bound to a single natural person and is non-transferable.

### O&O RescueBox Tech Edition

You are authorized to install and use the software product on all computers. This includes computers that do not belong to the company owning the license (also known as Service Technician's License). This license is bound to a single natural person and is non-transferable.

### **O&O SafeErase**

Amendment to: 2. Requirements for application (system requirements)

The software requires Windows 2000 (all Editions), Windows Server 2003 (all Editions), Windows XP (all Editions), Windows Vista (all Editions), Windows Server 2008 (all Editions), Windows 7 (all Editions) or Windows Server 2008 R2 (all Editions) operating systems. Usage within the terms of this contract is not achieved without the application of these operating systems.

### **O&O UnErase**

Amendment to: 2. Requirements for application (system requirements)

The software requires Windows Server 2003 (all Editions), Windows XP (all Editions), Windows Vista (all Editions), Windows Server 2008 (all Editions), Windows 7 (all Editions) or Windows Server 2008 R2 (all Editions) operating systems. Usage within the terms of this contract is not achieved without the application of these operating systems.

The product at hand can only be employed according to the acquired license. The following license types exist for O&O UnErase:

### O&O UnErase Personal Edition

You are authorized to install and use the software product on all computers a) in the possession of the company (legal person or natural person(s) in the case of corporations) owning the license and b) all located at a single site. This should be used wholly in conjunction with all hardware in your possession, i.e. this license may not be used to provide a service to a third party. This license is bound to a single natural person and is non-transferable.

### O&O UnErase Admin Edition

You are authorized to install and use the software product on all computers a) in the possession of the company (legal person or natural person(s) in the case of corporations) owning the license and b) all located at a single site. This should be used wholly in conjunction with all hardware in your possession, i.e. this license may not be used to provide a service to a third party. This license is bound to a single natural person and is non-transferable.

### O&O UnErase Tech Edition

## End user license agreement 2.6 (EULA)

You are authorized to install and use the software product on all computers. This includes computers that do not belong to the company owning the license (also known as Service Technician's License). This license is bound to a single natural person and is non-transferable.