

 O&O PartitionManager 3

Copyrights

Text, illustrations and examples have been produced with great care. The editor is neither legally nor in any other way liable for incorrect information given and its possible consequences.

This document is protected by copyright. All rights reserved. Without written approval no part of this document may be reproduced through photocopying, microfilming or any other procedure, nor may it be translated into a language used by machines, especially data-processing plants. Rights are likewise reserved for quotation in lectures, on radio and television.

Microsoft, Windows 2000, Windows XP, Windows Vista, Windows 7, Windows 2003, Windows 2008, and Windows 2008 R2 are registered trademarks of Microsoft Corporation, Redmond, WA, USA. O&O and the O&O-logo are registered trademarks of the O&O Software GmbH, Berlin.

Rev. 3/17/2010 10:24 AM

©2006-2010 O&O Software GmbH • Am Borsigturm 48 • 13507 Berlin • Germany

<http://www.oo-software.com>

Contents

About O&O PartitionManager 3	1
Tips and important instructions.....	1
Important features at a glance.....	1
The differences between the Editions.....	2
System requirements	4
Installation	5
Enter license.....	5
Using the test version.....	6
Updates.....	6
Uninstall.....	7
Online registration	8
What are the advantages of online registration at O&O?.....	8
How does online registration work?.....	9
Getting started	10
Terminology.....	11
Drive.....	11
Basic disks.....	11
Dynamic disks.....	11
MBR and GPT layout.....	11
Primary and extended partition.....	12
Logical drive.....	12
Change the size of a drive.....	12
Change the size of a partition.....	12
Move a partition.....	13
Change the size of a volume.....	14
Optimize the size to a minimum.....	16

Dividing a large partition into a number of smaller ones.....	17
Change several small partitions into one large one.....	18
Modify system partition.....	18
Edit various disk types.....	19
Convert to a basic disk or a dynamic disk.....	19
Convert to MBR or GPT Disk.....	20
Create a primary partition.....	21
Create an extended partition.....	22
Create a logical drive.....	23
Convert to logical drive.....	25
Create a new simple volume.....	25
Create a new spanned volume.....	25
Create a new stripe set.....	26
Create a new mirrored volume.....	27
Create a new RAID-5 volume.....	27
Mirror drive.....	28
Advanced functions.....	29
Recognize new disks.....	29
Format drives.....	29
Delete drive.....	30
Delete the contents of a drive securely.....	30
Delete disk securely.....	31
Securely delete free areas of a disk.....	32
Rename drive and change paths.....	32
Display properties.....	32
Using the Start CD.....	34
Boot directly from CD.....	34

Load drivers.....	35
VDS backward compatibility under Windows PE.....	36
Support and contact	37
Authorized resellers.....	37
End user license agreement 2.5 (EULA).....	38

About O&O PartitionManager 3

Thank you for deciding to purchase O&O PartitionManager! A hard disk organized into partitions can decisively contribute to rescue data or restore individual partitions including its content, in the case of a system error or a system crash. The O&O PartitionManager offers you the possibility to subdivide your hard disk into partitions, to move these, to change their size and much more. What makes it even more unique is the integration of O&O SafeErase, our multiple award-winning tool for deleting data securely. This is something that comes in very handy when you no longer need a certain partition and wish to free the space it's taking up on the disk.

O&O PartitionManager is also a component of [O&O BlueCon](#), our all-around solution when it comes to repairing damaged systems or restoring lost data. You can learn more about it on the [Product Pages](#) of our website.

We wish you lots of fun and success working with O&O PartitionManager! We will be very happy to answer all your questions about this and any other of our products.

Yours O&O Software

<http://www.oo-software.com>

Important: there is a risk, in the event a job cannot be run successfully, that data saved on the respective drives could be partially, or even totally lost. To be on the safe side, we suggest you create an image of the original drives before using the O&O PartitionManager: a tool like [O&O DiskImage](#) is ideal for this purpose.

Tips and important instructions

Important! Create an image of your data! There is a risk, in the event a job cannot be run successfully, that data saved on the respective drives could be partially, or even totally lost. To be on the safe side, we suggest you create an image of the original drives before using the O&O PartitionManager: a tool like [O&O DiskImage](#) is ideal for this purpose. Even if you're not intending to change individual partitions or volumes, you should still create an image of important data or your entire hard disk, before you begin using O&O PartitionManager.

Note: You must be a member of a local administrator group or possess comparable permissions in order to work with O&O PartitionManager on a local computer.

Note: Deleting or changing the system partition with O&O PartitionManager is only possible by using the Start CD under Windows PE.

Important features at a glance

Partitions are used, for example, to separate documents from programs. The division into two partitions has established itself: a system partition with all Windows- and software files and one data partition with all personal files, like photos, videos or Office documents. This makes it easier to image or restore data using data imaging products such as O&O DiskImage.

NEW: Server Editions that can be used on server operating systems.

NEW: Processing of stripe sets on all Windows operating systems. A stripe set saves data alternately in stripes on selected disks. As this involves simultaneously contacting ever more (at least two) disks, the load will be divided, which means data can be written and read faster with a stripe set than with a simple or spanned one.

NEW: Processing RAID 5 volumes on Windows Server operating systems. A RAID-5 volume is a mixture of payload and data redundancy. This makes a RAID-5 volume very fault-tolerant. If you create, for example, a RAID 5 volume using three dynamic disks of 10GB each, the entire volume will have a capacity of 20 GB. The remaining disk space will be used for storing backup data (parity).

NEW: Mirror disk and create mirrored volumes (under Windows 7 and Windows Server operating systems). Unlike stripe sets, identical data will be written onto the disks of a mirrored volume. The data will therefore be "mirrored" from one disk, e.g., hard disk, to another. This provides you with a "backup copy", just in case one disk is defective.

Advanced right-click function

The advanced entries enable an even better overview and much more comfortable hard disk management. You can, for example, open partitions/volumes directly by right-clicking them and by now convert logical drives and primary partitions. The properties entry shows all disk details in one overview.

Support of all disk types

As a basis for providing professional disk management, O&O PartitionManager supports a wide range of disks. Besides recognizing basic disks support is also given to dynamic disks, as well as removable storage media, such as USB sticks and memory cards. This enables you to create various disk types and convert them to one disk type or another. For example, you can convert a basic disk into a dynamic disk and there create a spanned volume.

Modify the system partition through the Start CD

The usual disk management programs often only offer a limited possibility to change the system partition. Usually, you will need to restart the computer and work in the native mode, where you not have the possibility to change anything. The Start CD of the O&O PartitionManagers is based on Windows PE. You will be able to easily and comfortably shrink, extend or move the system partition, depending on the data volume and file system.

Change the size of a partition

Depending on the size and data allocation, it's possible to change the size of a partition. You can, for instance, divide a large partition into several smaller ones, or bundle up several small partitions to a large one.

Delete data securely

If you delete data, it will become invisible to your "system". Your data, however, is still present on your hard disk. You have to be very careful when giving away or selling your computer. Data spies can easily reconstruct your private and business data using standard data recovery software such as O&O DiskRecovery. To make sure your data is permanently deleted, use the integrated deletion feature, O&O SafeErase. The data you delete can never be restored: not even with special data recovery software.

The differences between the Editions

O&O PartitionManager is available in two editions:

- O&O PartitionManager Professional Edition
- O&O PartitionManager Server Edition

The **Professional Edition** is the version to use for a single PC. It cannot be used on a server operating system. The following functions can additionally be run under Windows 7:

- [Create a new mirrored volume](#)
- [Mirror drive](#)

The **Server Edition** can be used on both a server and a desktop computer. The following functions can additionally be run on a server operating system:

- [Create a new mirrored volume](#)
- [Mirror drive](#)
- [Create a new RAID-5 volume](#)

System requirements

- The system requirement of each operating system have to be fulfilled
- 1 GB RAM recommended (Start CD)
- 20 MB free hard disk space
- Supported by 32 Bit/64 Bit
- Supported file systems: Windows file systems FAT12/FAT16/FAT32/NTFS4/NTFS5
- To display the program help you will need the Microsoft Internet Explorer 5.5 or a higher version

Operating systems supported

Operating system	Professional Edition	Server Edition
Windows® 7	yes	yes
Windows® Vista®	yes	yes
Windows® XP	yes	yes
Windows® 2000 Professional	yes	yes
Windows® 2000 Server	no	yes
Windows® Server 2003	no	yes
Windows® Server 2008	no	yes
Windows® Server 2008 R2	no	yes

Permissions

You must be a member of a local administrator group, or possess comparable permissions, in order to install and register O&O PartitionManager. Domain Administrators normally already possess these permissions.

Installation

Installing O&O PartitionManager is very straight forward. Please follow the steps below:

1. Start the computer on which you would like to install O&O PartitionManager.
2. Login as local administrator or as a user possessing comparable permissions.
3. Start the installation file from O&O PartitionManager, which you have either downloaded from our server or have on your personal CD ROM.
4. After the setup program has been successfully initialized, please follow the installation dialogue.
5. When prompted, restart your computer.

Enter license

Note: In order to activate the product after installation or to gain access to the Full Version at a later time, you must possess a valid license key. This license key is also called a registration code, serial number, or product ID. If you do not enter a valid license key, you can use [O&O PartitionManager](#) as test version. Should you have any questions, please contact our Support Team.

The dialogue for registration always appears automatically at the start to guide you if you are using an unregistered version or have entered the registration code incorrectly.

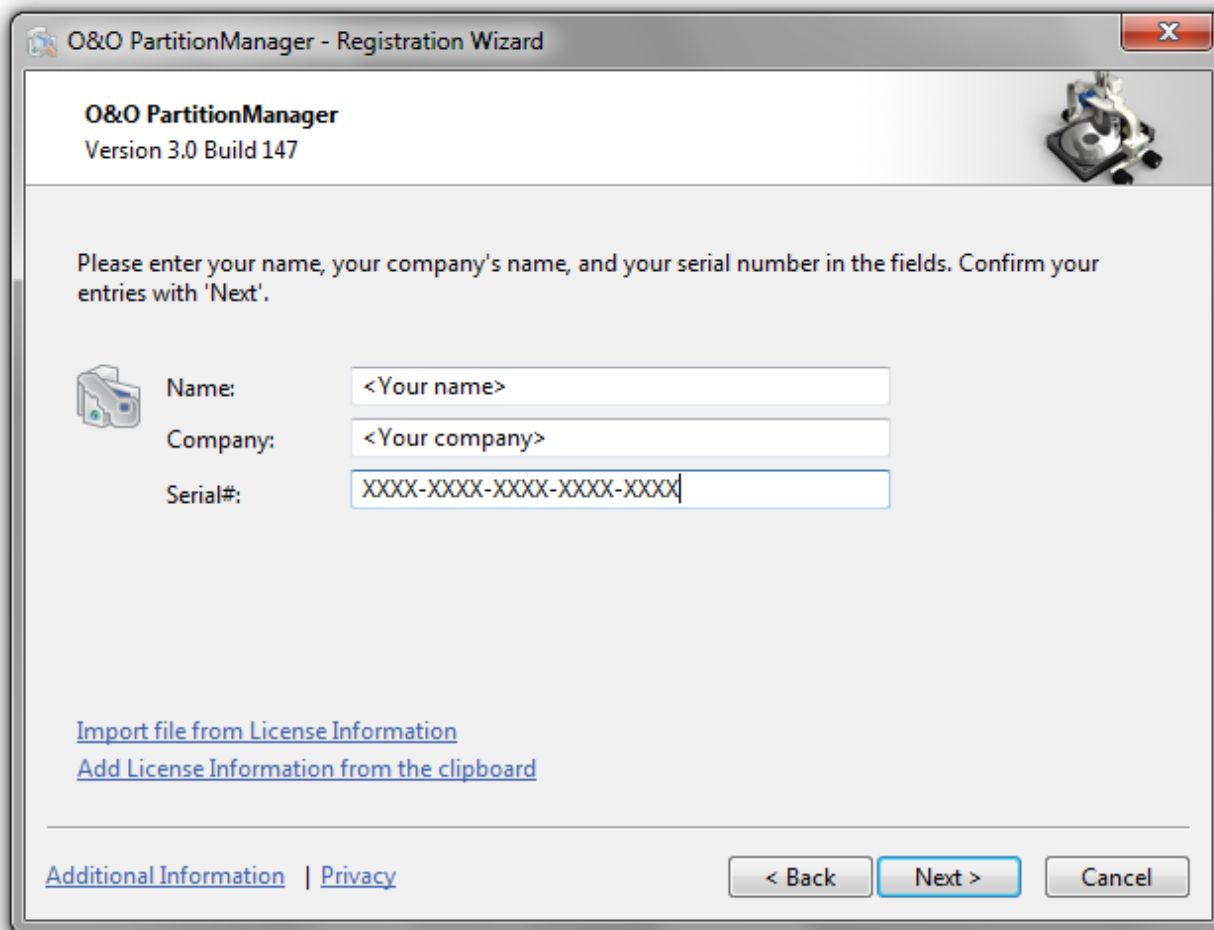
The registration wizard allows for a simple registration process.

When you select the option **Enter your registration code**, a dialog box will appear where you can enter the registration code you received when purchasing the software.

- If you have purchased the software **as download**, please enter the license information ("Name", "Company" and License key), just as they are written in the confirmation E-Mail you received.
 - If you have purchased the software as **Box version**, please enter the license key as it is written on the license card included. In addition, please enter your name and if needed your company.
1. Please make sure that you do not confuse the digit "1" with "l" or enter any empty spaces where they don't belong.
 2. Press **Next** to save the registration data or **Cancel** to leave the dialog window without saving the data.
 3. When you have correctly entered the license code you will receive a confirmation in the dialog window.

You can now register online and benefit from many advantages, such as technical support and free upgrades.

Should you run into any problems when entering your registration code, please contact our Support Team.



Registration Wizard

Using the test version

You can test O&O PartitionManager without making any commitments and for free for up to 30 days. The remaining days of the trial period are displayed whenever you start up the program. The trial version is not restricted – all program functions are fully operational. Yet, you should keep in mind that certain applications, such as shrinking or deleting a system partition can only be performed with the O&O PartitionManager Start CD, which you will receive whenever you buy the product.

Updates

If you want to update O&O PartitionManager to a newer version, you'll need the license key. Please follow the following directions:

1. Start the installation of O&O PartitionManager.
2. Complete the O&O PartitionManager installation in the normal way.
3. Once finished, the new version is fully installed.
4. Restart the computer, when asked to do so.

Uninstall

To remove O&O PartitionManager from your PC, please follow the following instructions:

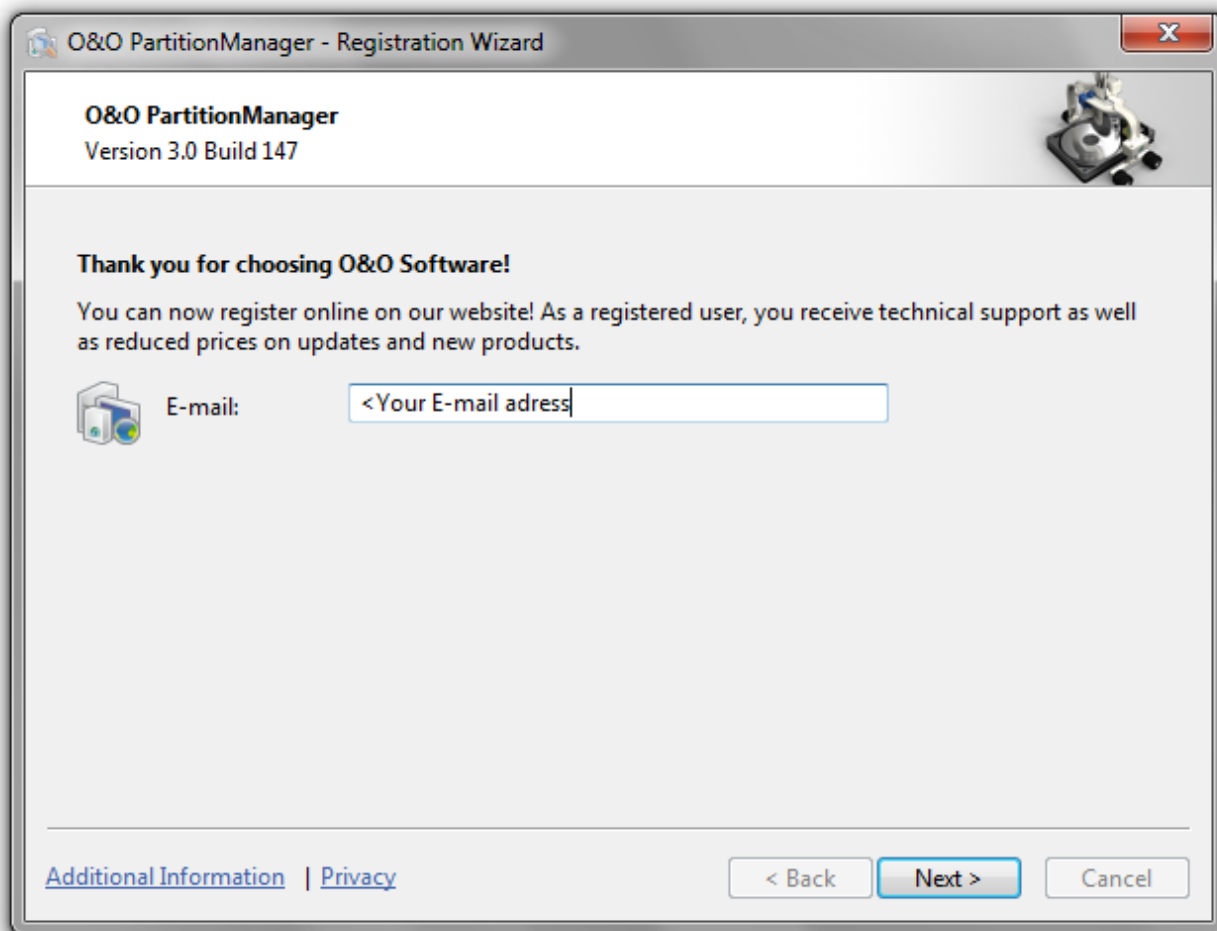
1. Open the Control Panel from the Windows Start menu.
2. Select **Software** or **Programs and functions**.
3. Please select **O&O PartitionManager** from the list of installed software and then click **Remove** or **Uninstall**.
4. Confirm the uninstallation of O&O PartitionManager. Once the uninstall process is complete you will receive a confirmation message.
5. Restart the computer, when asked to do so.

Note: Please bear in mind that the Microsoft control panel is differently structured depending on the operating system. Some terminologies might therefore slightly differ. If you have difficulties while uninstalling our program, please consult our Support.

Online registration

In order to register an O&O Product online, you'll need the registration code that you received at the time you purchased your product. This registration code is also called a license key, a serial number or product ID.

If you'd like to register, start the O&O program. The questions related to online registration always appear at the start, provided you haven't registered online.



What are the advantages of online registration at O&O?

Online registration gives you the benefit of having your customer data kept safely in our files, which means we can provide you with even better service.

This comes in very handy if, for example, you're unable to find the access code to your product. The license code is needed for making Updates or reinstalling the O&O programs on your computer if it ever needs to be set-up again.

Online registration

Further advantages will let you:

- Be supplied with the latest information about our products
- Make free updates on new versions of purchased items (minor updates)
- Upgrade to a new version at a special discount price (major update)
- Obtain support from our customer service
- And much, much more...

How does online registration work?

If your O&O program was purchased on our Online Shop, you've automatically registered with us. If it was purchased through a dealer, you'll be asked during installment if you'd like to register. You then have the option of either registering immediately or at another time. All you'll need is a functioning Internet connection and a valid license key.

You may also complete the registration form right here:

<http://www.oo-software.com/register>

Just return the completed online form by clicking "Send" and you'll be eligible to take full advantage of our O&O Customer Service.

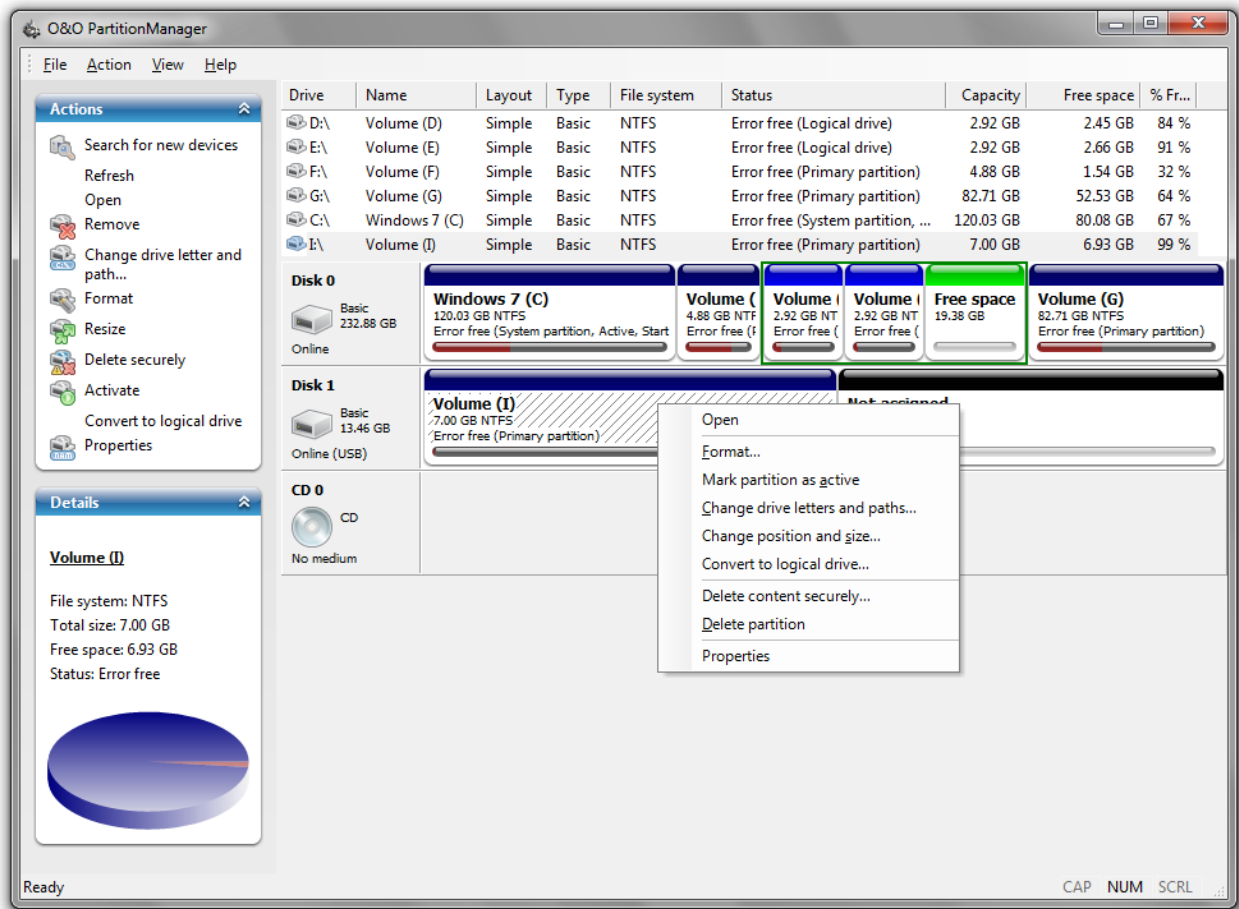
Getting started

The following chapters will give you a broad view of the program functions available on O&O PartitionManager. Many functions on it have been designed in a way similar to the Windows Disk Manager. Beyond that, however, O&O PartitionManager has a number of useful functions that will make it even easier for you to manage your hard disk.

You can start O&O PartitionManager under **Start/Programs/O&O Software/O&O PartitionManger**. The Online Help will open, if you click on **Help** or press **F1**.

Important! There is a risk, in the event a job cannot be run successfully, that data saved on the respective drives could be partially, or even totally lost. To be on the safe side, we suggest you create an image of the original drives before using the O&O PartitionManager: a tool like [O&O DiskImage](#) is ideal for this purpose.

Tip: Additional information to the use of individual disk types is available in chapter [Terminology](#).



User Interface of O&O PartitionManager

Terminology

All the different disk types will be explained in the following section.

Drive

In the following text, the term "drive" will be used to depict (single) partitions as well as logical drives in expanded partitions and volumes. A drive is a reserved area of the hard disk. Multiple drives can be found on a hard disk.

Drives are used, for example, to separate documents from programs. A division in at least two partitions has become generally accepted:

- Drive C: for operating systems and programs
- Drive D: for documents, e.g. photos, Office documents, music, etc.

This makes it easier to image or restore data using data imaging products such as O&O DiskImage.

Basic disks

A basic disk is a physical disk, e.g., a hard disk. On a basic disk it is not possible to create dynamical volumes.

Dynamic disks

A dynamic disk is a physical disk, e.g., a hard disk, which is so formatted that it's also able to support dynamic volumes. Dynamic volumes can be sprawled over a number of disks.

Dynamic disks from new or unknown hard disk will initially be displayed as unallocated spaces. With the help of O&O PartitionManager, you can import them so that they will be displayed as dynamic disks.

Note: Certain problems may arise when trying to import disks of various Windows Versions, e.g., W2K and XP. This is why you should only import disks of the same Windows Version.

MBR and GPT layout

Basic and dynamical disks can be structured according to a MBR (Master Boot Record) or GPT (GUID Partition Table) Layout.

It's possible to create up to four primary partitions on a basic disk, or three primary partitions and one extended partition.

On a basic disk with a GPT layout it is possible to have up to 128 partitions without the need for an extended partition.

On a dynamical disk with a MBR layout it is possible to create unlimited dynamical volumes.

On a dynamical disk with a GPT layout it is possible to create up to 128 dynamical volumes.

Primary and extended partition

A **primary partition** functions just like a separate disk: it can be used for installing an operating system.

It is possible to create one or several logical drives on an **extended partition**.

Logical drive

It is possible to subdivide an extended partition into several logical partitions. A logical drive is not a "real" partition, but an area in an extended partition. A logical drive can only be created on an extended partition. An operation system can also be installed on a logical drive. To start this, an additional boot partition has to be created as primary partition on the disk.

Change the size of a drive

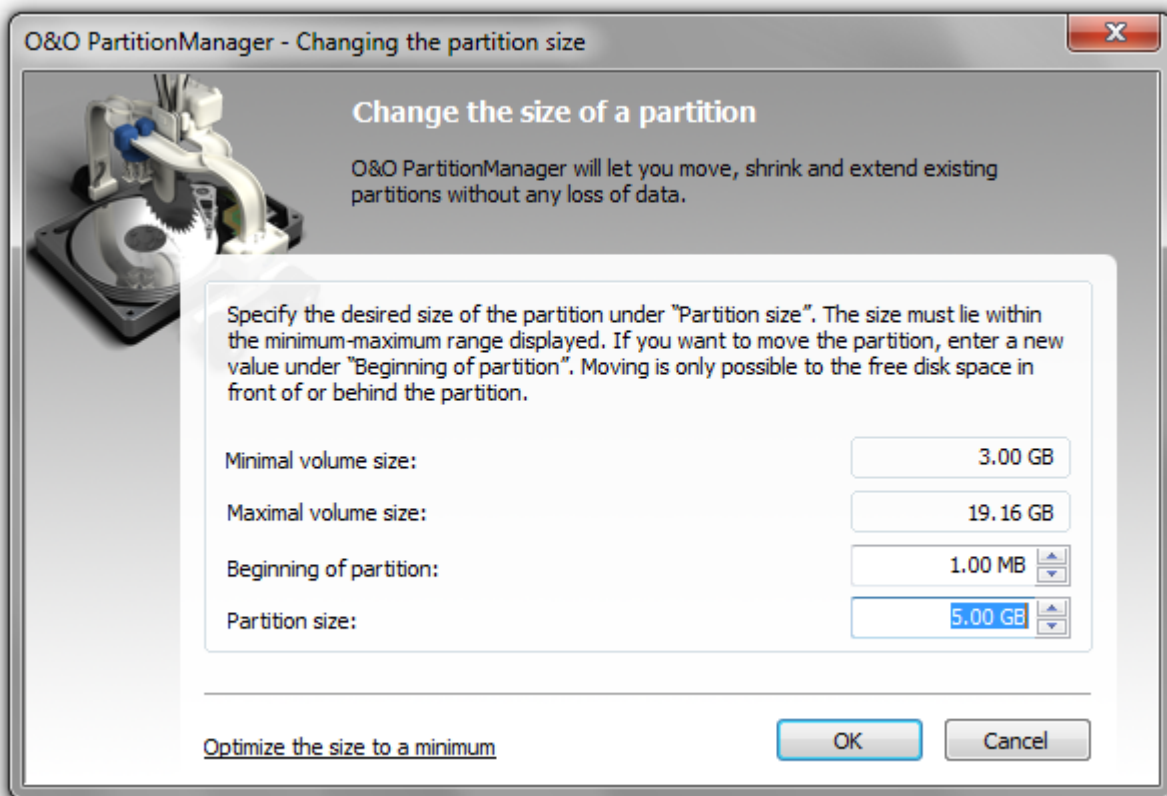
You can change the size of a partition, a volume, or a spanned volume. It's also possible to move a partition.

Change the size of a partition

1. To change the size of a drive, right-click the desired drive or in the menu bar on **Action/All actions** on the start page of O&O PartitionManager and select **Change location and size**.
2. Adapt the drive size in the dialogue under **Partition size** according to the shown minimum and maximum values.

Note: Please bear in mind that you can only extend the partition by the free space available, which lies behind the drive in the graphical drive display.

Note: We recommend choosing the option [Optimize the size to a minimum](#), before shrinking your drive. Optimizing can take some time, depending on the size of the partition.



Changing partition size

Note: If the job is not successfully run, there is a risk that data saved on the drive will be partially or fully lost. To be on the safe side, before increasing the size of a drive, create an image of the original drive with O&O DiskImage.

Note: Please bear in mind that shrinking or extending the system partition is only possible from the Start-CD under Windows PE. For more information consult chapter [Change system partitions](#).

Move a partition

Important! We strongly advise against moving a system partition under Windows Vista. Moving a partition will result in Windows not automatically starting the next time you start your computer.

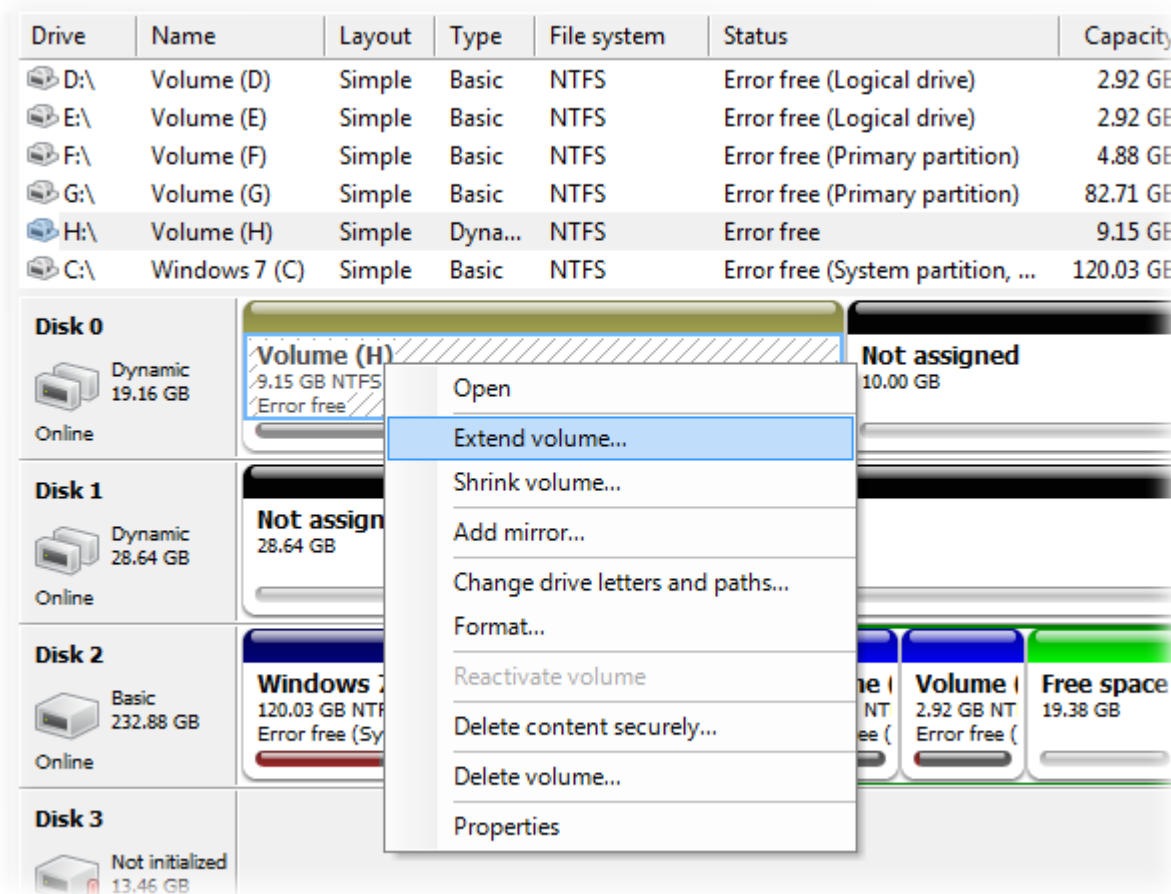
Note: Please bear in mind that you can only move the partition by the free space available in the direction you are moving it to. The free space must be located directly behind the partition, otherwise it is not possible to move it.

1. To move a partition, right-click the partition or in the menu bar under **Action/All actions** on **Change location and size**.
2. Adapt the position of the volume in the disk under **Beginning of partition**. The higher the value, the more it will move to the back.

Change the size of a volume

Volumes are located on dynamic disks. There are simple and spanned volumes. A spanned volume needs to be located on at least two dynamic disks.

- To extend the size of a volume, right-click the volume and then click **Extend volume**. All the available disks will be displayed.



Right-click menu of a volume

Extend simple volume

1. If you only want to extend the volume, just enter the desired size under **Disk space in MB**.
2. Click **Continue** in the wizard and set additional settings. The extended volume will then be created.

Extend the volume onto multiple disks

1. If you want to extend a volume onto multiple disks, select the additional disks you want from the list on the left and click **Add**. This will result in the volume being automatically created as a spanned volume in a later process.

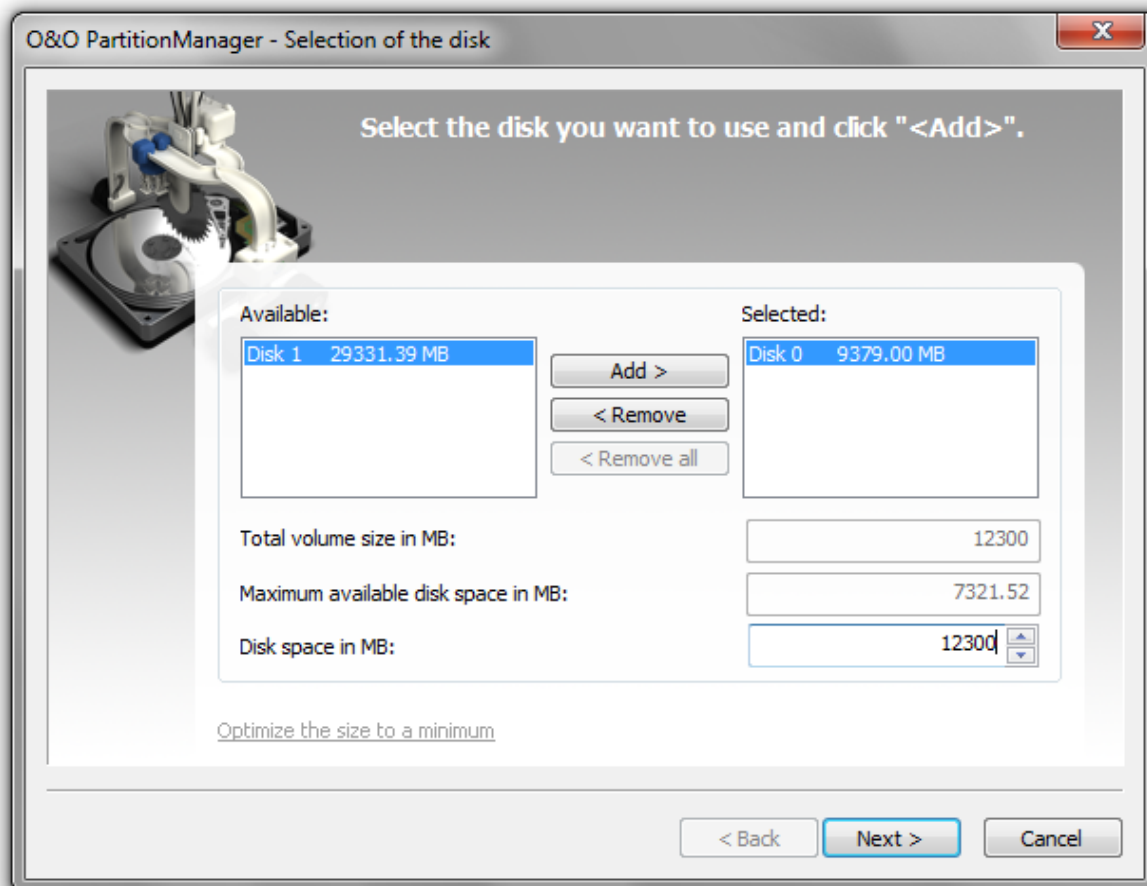
Getting started

2. Now specify the respective size of the volume for each disk. Select the first disk under "Selected" and enter the size you want the volume to be under **Disk space in MB**. Then select the second disk and enter the size you want the volume to be on this disk.
3. Click **Continue** in the wizard and set additional settings. The spanned volume will then be created on the disks you have selected.

Shrink volume

1. To shrink a volume, right-click the volume and then click **Shrink volume**. All the available disks will be displayed.
2. If the volume is located on multiple disks (spanned volume), you can select whether the volume should be shrunk on all or just one of the disks.
3. Using **Add /Remove** select the disk or disks you want. By removing a disk from the selection, the volume will not be shrunk on it.
4. Click **Continue** in the wizard and set additional settings. The volume will then be shrunk.

Note: Only simple or spanned volumes can be extended or shrunk. RAID, mirrored, and stripe set volumes cannot be changed.



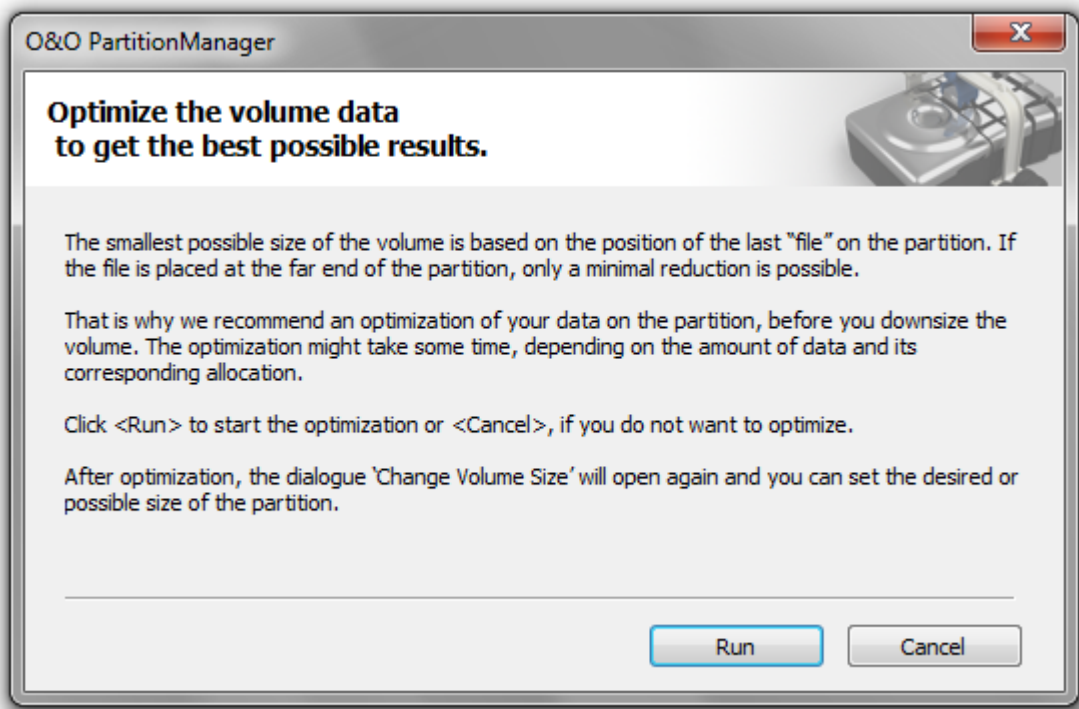
Change the size of a volume

Optimize the size to a minimum

You can shrink a drive (volume or partition) down to its free disk space and even until the last physical file on the volume. You can also find free space in between files on some drives (so called "holes") that cannot be used when shrinking. These holes can be closed by optimizing the drive. We therefore recommend optimizing your drive before shrinking it. As a result, all files will be reorganized and saved back to back (which uses up less space). In other words, your files will physically be moved forward, and the distance from the last file to the end of the drive will be increased. This will allow the drive to be shrunk to a minimum. The process of optimization is based on the technology contained in our multiple award-winning defragmentation program, O&O Defrag.

Important: If shrinking the drive is not successfully run, there is a risk that data saved on the drive will be partially or fully lost. To be on the safe side, before reducing the size of a drive, create an image of the original drive with O&O DiskImage.

Note: Please bear in mind that shrinking or extending the system partition is only possible when using the Start CD under Windows PE. For more information consult chapter [Change system partitions](#).



Optimize the size to a minimum

Dividing a large partition into a number of smaller ones

There are various ways of dividing a large partition into a number of smaller ones, according to the size and amount of data allocation.

Important: If the application is unsuccessful, there is a risk that your data will be either partially or fully lost. That's why you should backup all the original partition's data onto a removable medium or another partition.

Note: Enlarging or reducing the system partitions is only possible with O&O PartitionManager while using the Start-CD and under Windows PE. For more information consult chapter [Change system partitions](#).

Option 1: Shrinking the partition to the minimal size (based on the amount of data), and using the area that's now free for creating the desired number of partitions.

1. Right-click the selected partition and then click **Change location and size**. In the dialogue box, go to Volume size and set the minimal size. The space you now have available will be subsequently displayed in the view of the disk.
2. By right-clicking the free space you can create a **New partition** and adjust the size to make sure you'll have enough space for any further partitions you may want to create. In the dialogue you'll also be able to perform additional functions such as assigning drive letters or the type of drive.
3. You will then be able to create the next partition in the same way. The new partition will be created after you've confirmed your selections.

Option 2: When your partition is almost full, create an image of your data on either a removable medium or another partition. You can then delete the original partition and split it afterwards into the number of partitions you desire. Once you've finished doing this, you can divide your imaged data among the newly created partitions.

1. Create an image of your data from the large partition and save it on a removable medium or another partition.
2. Delete the original partition by right-clicking the selected partition and then clicking **Delete partition**. It will then be labeled as an unallocated space.
3. After you right-click, select **New partition** and adjust the size to make sure you'll have enough space for any additional partitions you might want. In the dialogue you'll also be able to perform additional functions such as assigning drive letters or the type of drive.
4. You will then be able to create the next partition in the same way. The new partition will be created after you've confirmed your selections.

Change several small partitions into one large one.

1. First copy all the data onto one drive so that all the remaining drives are empty. If one drive doesn't have enough room for storing all the data, save the data on something like a removable medium for the duration.
2. Delete the empty partitions by right-clicking each one and then selecting **Delete partition**. They will then be labeled as an unallocated space.
3. Right-click the drive where you have copied all the data and then select **Change location and size**.
4. In the dialogue you'll then be able to select and confirm the size you desire.

Please note: The free space must be located directly behind the drive whose size you want to increase, otherwise, you will not be able to increase it.

Modify system partition

If your hard disk is only divided into one partition, then you can assume to find your system files as well as your private data on it. If you want to create a system and a data partition, you must start the O&O PartitionManager directly from the Start CD. Shrink the partition to the minimal size (based on the amount of data), and use the area that's now free to create the desired number of partitions. Please follow the steps below:

1. Start the O&O PartitionManager directly from CD as described in chapter [Boot directly from CD](#).
2. Start O&O PartitionManager under **Start/Programs/Administration/O&O PartitionManager**
3. Right-click the selected system partition and then click **Change location and size**. In the dialogue box, go to **Partition size** and set the minimal size. The space you now have available will be subsequently displayed in the view of the disk.
4. Generate a **New partition** by right-clicking on the free area.
5. If you want more subdivisions, then set the parameters for size in a way that there will still be space for additional partitions. In the dialogue you'll also be able to perform additional functions such as assigning drive letters or the type of drive.
6. You will then be able to create the next partition in the same way. The new partition will be created after you've confirmed your selections.

Important: If the application is unsuccessful, there is a risk that your data will be either partially or fully lost. That's why you should backup all the original partition's data onto a removable medium or another partition.

Edit various disk types

O&O PartitionManager allows you to create and convert various types of disks (basic or dynamic) and layouts (MBR or GPT).

If a disk is not initialized, you can convert it into a basic disk with an MBR or GPT layout. You can also convert it into a dynamic disk with an MBR or GPT layout.

Important! There is a risk, in the event a job cannot be run successfully, that data saved on the respective drives could be partially, or even totally lost. [Convert to Dynamic disk](#)

Tip: Additional information regarding the use of individual disk types is available in chapter [Terminology](#).

Convert to a basic disk or a dynamic disk.

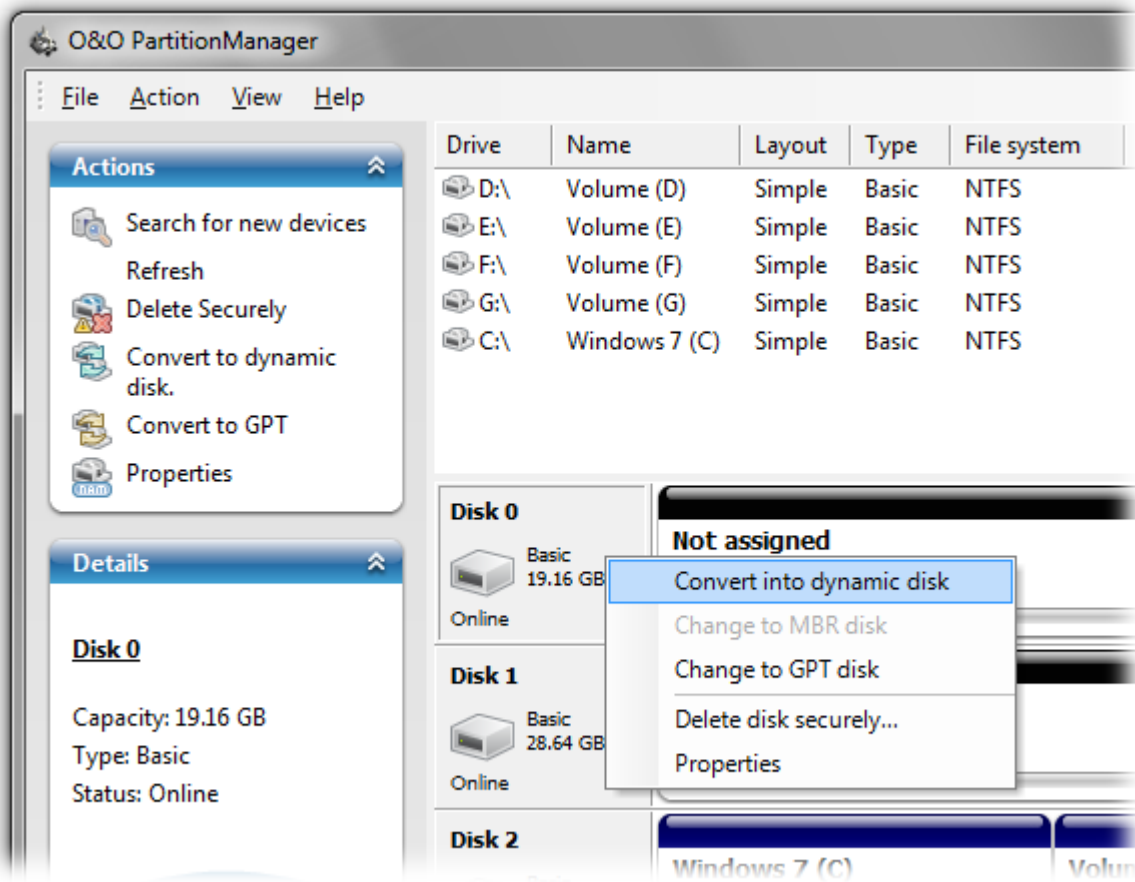
You can convert a basic disk into a dynamic disk and vice versa. Dynamic disks make it possible to create volumes that extend over a number of disks. All volumes present on dynamic disks are labeled as dynamic volumes.

- You can select the function **Convert to dynamical disk** by right-clicking , or under the program setting **Action/All actions**.
- You can select the function **Convert to simple disk** by **right-clicking** the disk, or under the menu bar under **Action/All actions**.

Note: A disk may only be changed into a dynamic disk or a basic disk when the original disk contains no partitions or volumes. *

* **Exception:** A base disk, which is subdivided into partitions with and MBR layout can be converted into a dynamical disk with MBR layout. About 10 MB free hard disk space is needed for this.

Edit various disk types



Convert a basic disk to a dynamic disk.

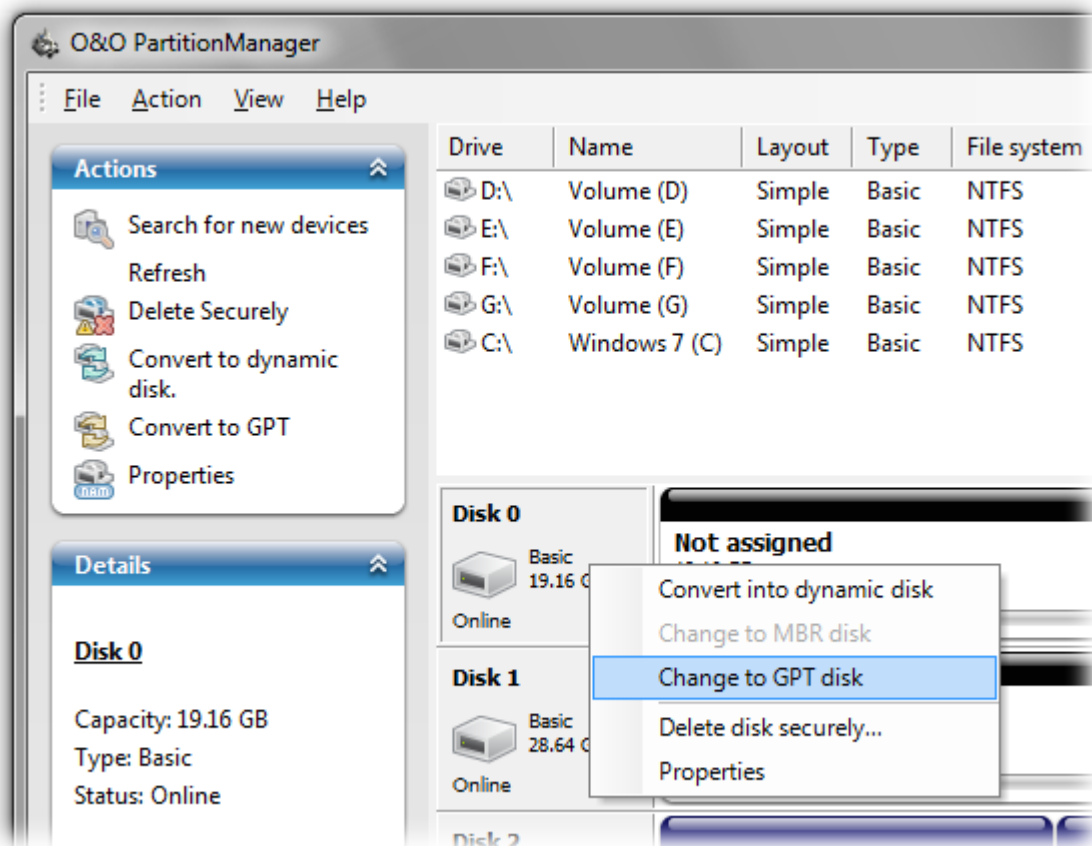
Convert to MBR or GPT Disk

You can convert basic and dynamic disks into various layouts (MBR or GPT).

It's possible to create up to 128 partitions or dynamic volumes on a disk having a GPT layout, without the need for extended partitions.

- To convert a disk into a GPT layout, right-click the disk, or under **Action/All Actions**, click **Convert to GPT**.
- To convert a disk into a MBR layout, right-click the disk, or under **Action/All Actions**, click **Convert to MBR**.

Note: Changing a conversion into another layout can only be done when there are no partitions or volumes on the original disk.



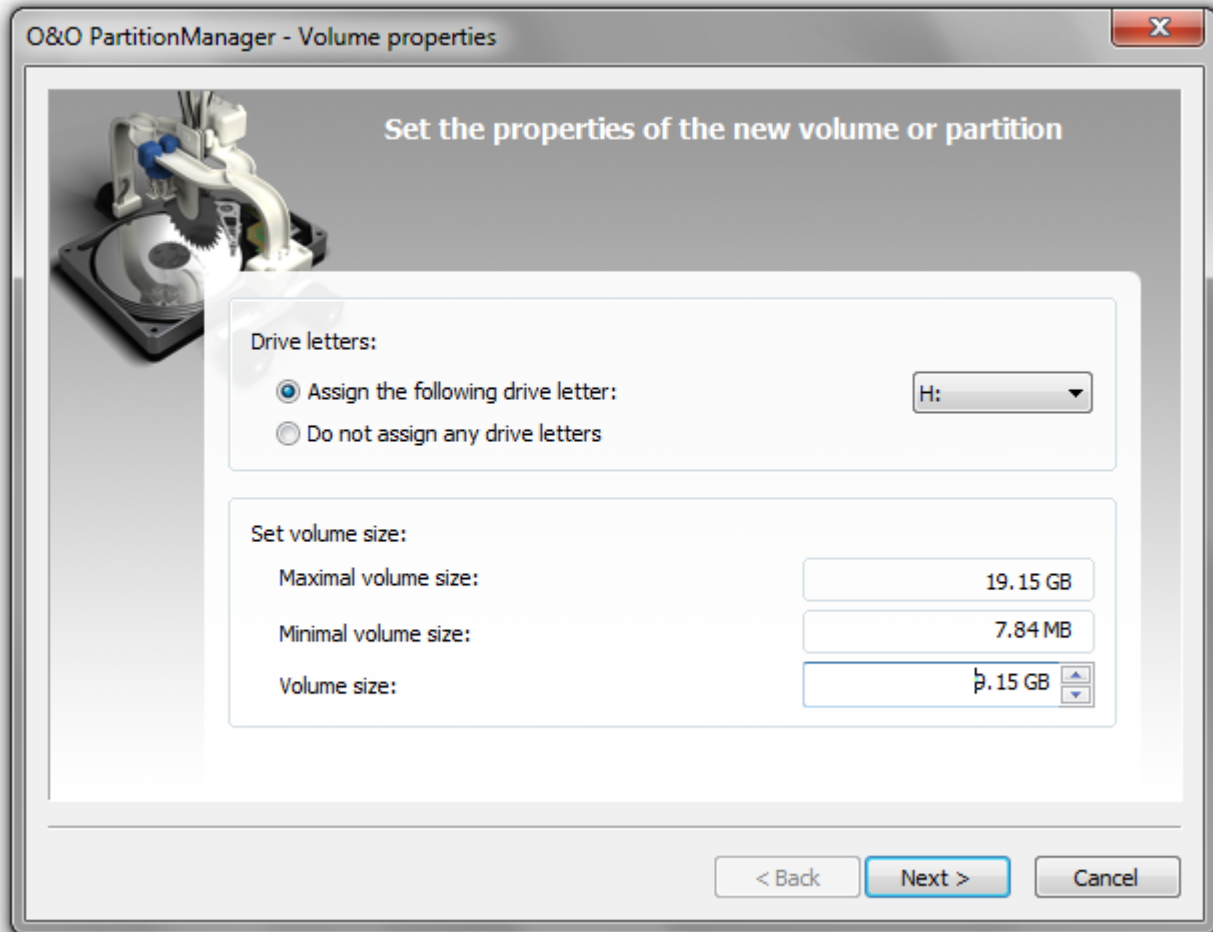
Convert to GPT layout

Create a primary partition

You can convert unallocated spaces of the hard disk (basic disk) into a new primary partition. A primary partition functions just like a separate disk: it can be used for installing an operating system.

Note: It's possible to create up to four primary partitions on a basic disk, or three primary partitions and one extended partition with any number of logical drives. A GPT layout allows a subdivision of up to 128 partitions.

1. To create a primary partition, **right-click** the unallocated space, or under **Action/All actions** in the menu bar and then **New partition**.
2. Follow the questions in the dialogue and in the dialogue Selection of the partition type, click **Primary partition**.
3. In the next step you should specify properties such as drive letters and size of the partition.
4. You can then format the drive immediately (recommended) or at a later moment, the initialization will follow automatically.
5. After confirming your entries, the new partition will be displayed graphically.



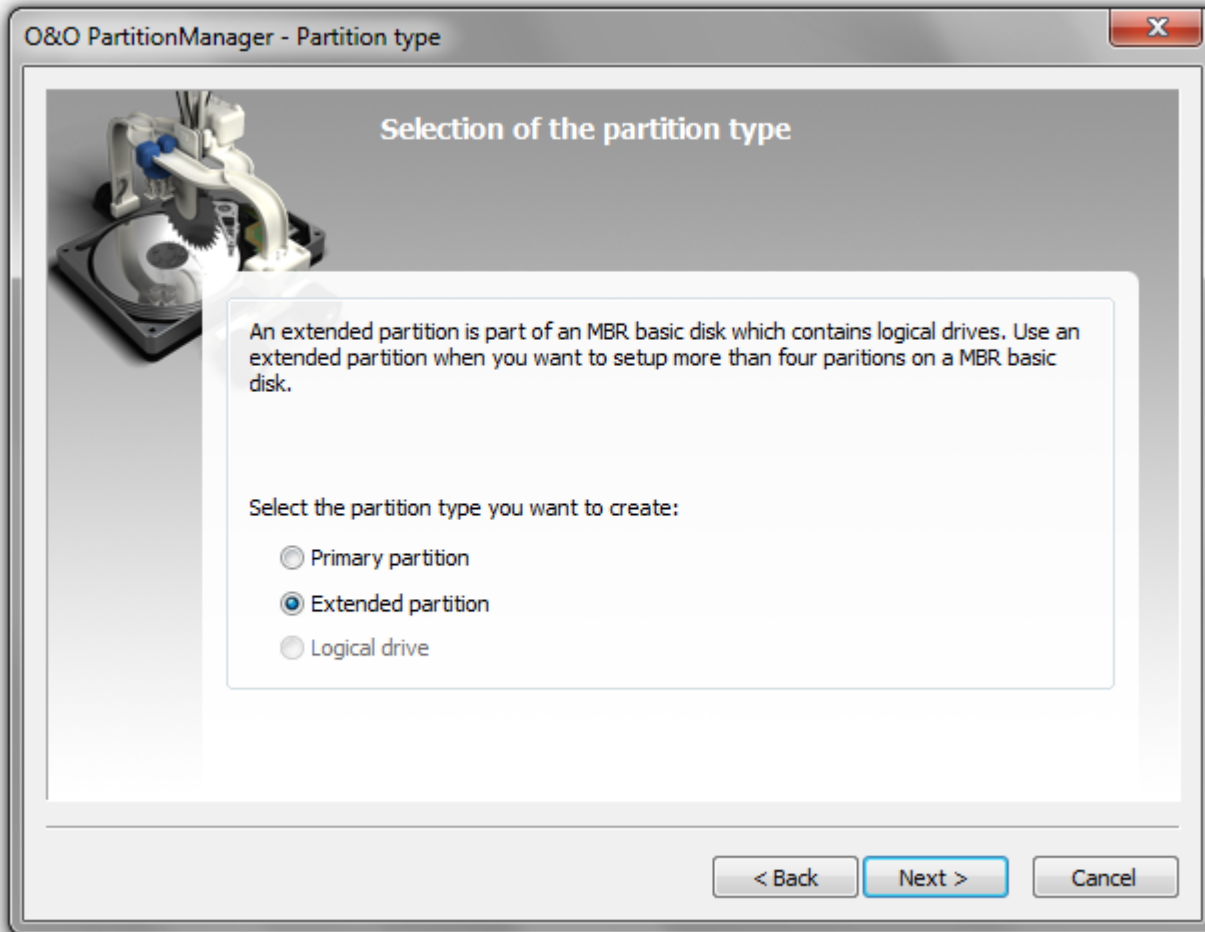
Create a primary partition

Create an extended partition

You can create an extended partition in an unallocated space of the hard disk (basic disk with MBR layout).

1. Select the unallocated space to create an extended partition.
2. **Right-click** or click on **New partition** under **Action/All actions** in the menu bar.
3. Follow the questions in the dialog and in the dialog Selection of the partition type, choose **Extended partition**.
4. In the next step you should specify properties such as the size of the partition.
5. After confirmation, the extended partition will be displayed graphically as "Free Space".
6. You will be able to create unlimited [logical drives](#) on the extended partition.

Note: It's possible to create up to four primary partitions on a basic disk, or three primary partitions and one extended partition with any number of logical drives.



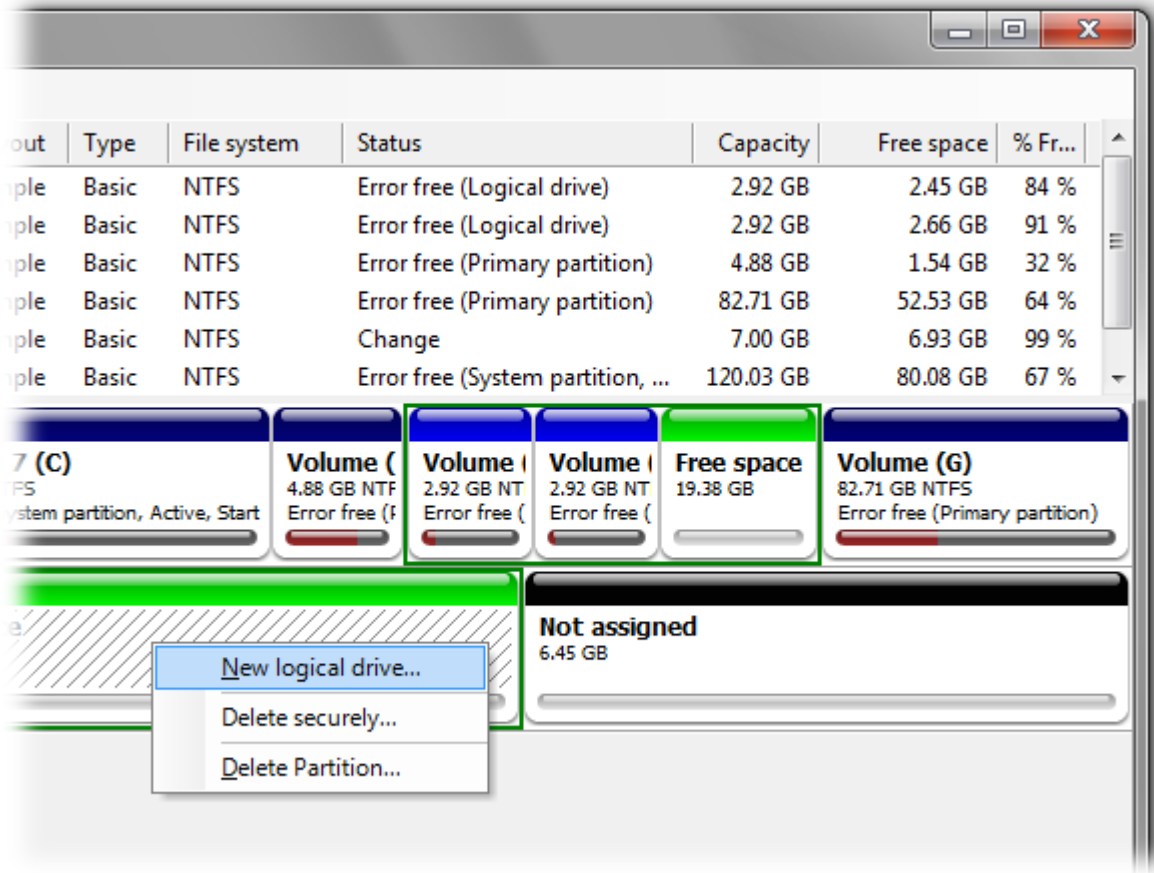
Create an extended partition

Create a logical drive

A logical drive can only be created on an extended partition. It is possible to subdivide an extended partition into several logical drives.

1. To create a logical drive select the extended partition and **right-click** it, or under **Action/All actions** in the menu bar **New logical drive**.
2. Follow the questions in the dialogue and in the dialogue Selection of the partition type click **Logical drive**.
3. In the next step you should specify properties such as drive letters and size of the partition.
4. You can then format the drive immediately (recommended) or at a later moment, the initialization will follow automatically.
5. After confirmation, the logical drive will be displayed graphically.

Edit various disk types



Create a new logical drive

Convert to logical drive

You can convert a primary partition to a logical drive and vice versa.

- To convert a primary partition into a logical drive, right-click on the partition or in the menu bar under **Action/All actions** on **Convert to logical drive**.

To convert a logical drive into a primary partition proceed analogous.

Create a new simple volume

A new simple volume can only be created on an unallocated space of a dynamic disk.

1. To create a new simple volume, right-click the unallocated space then click **New simple volume**, or click under **Action**.
2. In the next step you should specify properties such as drive letters and size of the partition.
3. You can then format the drive immediately (recommended) or at a later moment, the initialization will follow automatically.
4. After confirmation, the new simple volume will be displayed graphically.

Create a new spanned volume

A spanned volume is a partition that's shared by at least two disks. A spanned volume can only be created on dynamic disks. A minimum of two disks, e.g., hard disks, are required for doing this.

Note: This function is not supported by Windows XP Home.

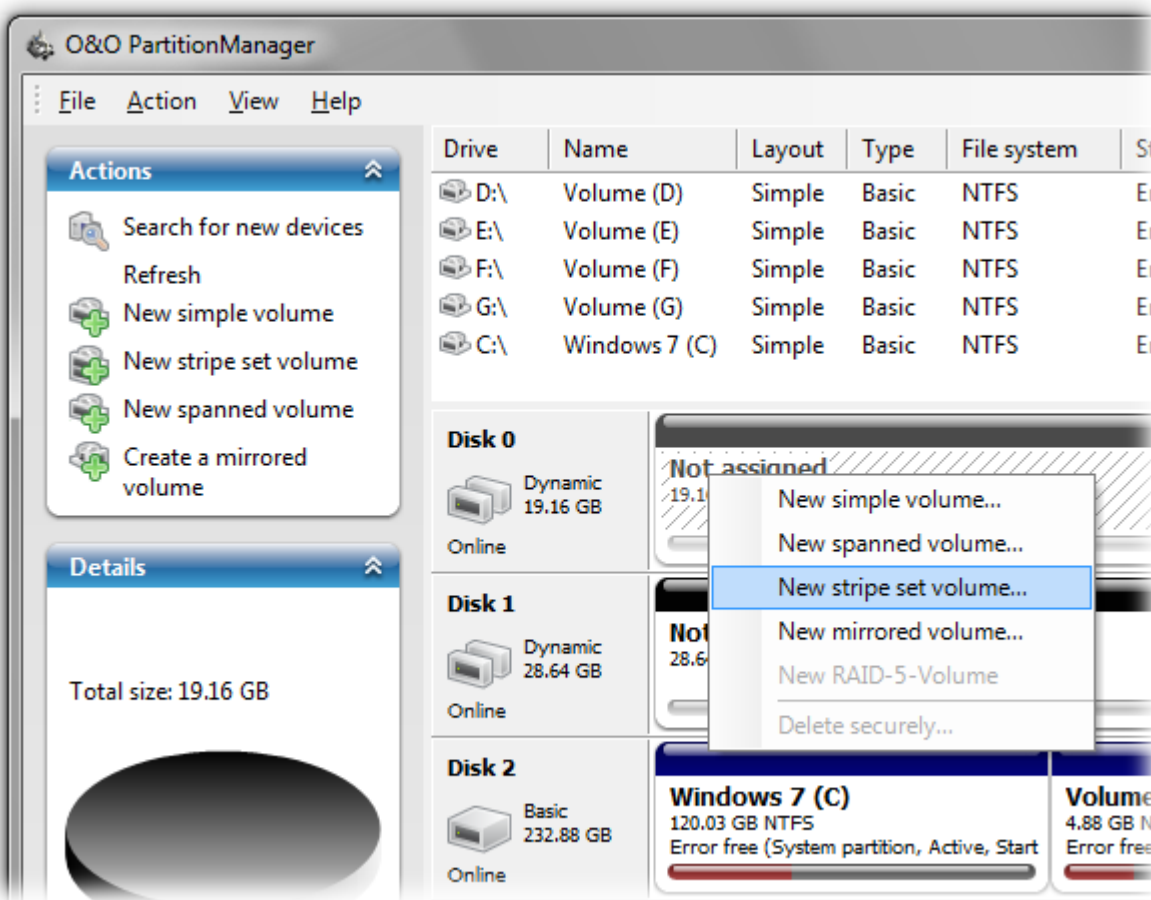
1. To create a primary partition, **right-click** the unallocated space of the dynamical disk, or under **Action/All actions** in the menu bar click on **New spanned volume**.
2. In the next step you should select the disks you want to use and add them to the selection. You must select at least two disks.
3. You can also select the size of the individual parts. In the selection, mark the corresponding disk in the list and specify the size you desire.
4. You can then select the drive letters.
5. You can then format the drive immediately (recommended), the initialization will follow automatically.
6. After confirmation, the new spanned volume will be displayed graphically.

Create a new stripe set

A stripe set can only be created on dynamic disks. A minimum of two disks, e.g., hard disks, are required for doing this. A stripe set saves data alternately in stripes on selected disks. As this involves simultaneously contacting more and more (at least two) disks, the load will be divided. This means data can be written and read faster with a stripe set than with a simple or spanned one.

Note: This function can only be be run under Windows Server 2000, 2003, 2008 or 2008 R2 (all Editions).

1. To create a new stripe set, **right-click** the unallocated area of the dynamical drive and select **New stripe set** or click **Action/All actions** in the menu bar.
2. Then select the disk you want to use and add it to the selection by clicking **Add**. You must select at least two disks.
3. You must also specify the size of both parts. The size of each part will always remain identical.
4. You can then select the drive letters.
5. After this, you can format the drive (recommended). Initialization will follow automatically.
6. After confirmation, the new stripe set will be displayed graphically.



Create a new stripe set

Create a new mirrored volume

A mirrored volume can only be created on dynamic disks. A minimum of two disks, e.g., hard disks, are required for doing this.

Note: This function can only be run under Windows Server 2000, 2003, 2008, 2008 R2(all Editions) or Windows 7 (all Editions).

Unlike stripe sets, identical data will be written onto the disks of a mirrored volume. The data will therefore be "mirrored" from one disk, e.g., hard disk, to another. This provides you with a "backup copy", just in case one disk is defective.

1. To create a new mirrored volume, **right-click** the unallocated space of the dynamical disk, or under **Action/All actions** in the menu bar click on **New mirrored volume**.
2. In the next step you should select the disks you want to use and add them to the selection. You must select at least two disks.
3. You can also specify the size of each part. The size of each part will always remain identical to the other.
4. You can then select the drive letters.
5. You can then format the drive immediately (recommended), the initialization will follow automatically.
6. After confirmation, the new mirrored volume will be displayed graphically.

Create a new RAID-5 volume

A RAID-5 volume can only be created on a dynamic disk. At least three (and a maximum of 32) dynamic disks are required for doing this.

Note: This function can only be run under Windows Server 2000, 2003, 2008 or 2008 R2 (all Edition).

A RAID 5 volume saves data just like any other disk. In addition, data on a RAID 5 volume will be filed repeatedly (redundancy). This makes a RAID-5 volume very fault-tolerant. If you create, for example, a RAID 5 volume using three dynamic disks of 10 GB each, the entire volume will have a capacity of 20 GB. The remaining disk space will be used for storing backup data (parity). RAID-5 volumes can neither be extended nor mirrored.

1. To create a new RAID 5 volume, **right-click** the unallocated space of the dynamic disk, or under **Action/All actions** click **New RAID 5 volume**.
2. In the next step you should select the disks you want to use and add them to the selection. You must select at least three dynamic disks.
3. You can also specify the size of each area. The size of each area will always remain identical to the others.
4. The next step will allow you to select the drive letters.
5. You can then format the volume (recommended). Initialization will follow automatically.
6. After confirmation, the new RAID-5 volume will be displayed graphically.

Mirror drive

You can create a mirror out of a simple volume. The data on it will then be copied onto another drive. Every change that is made to the original drive will automatically be made to the mirror.

Note: A mirrored volume can only be created under Windows Server 2000, 2003, 2008, 2008 R2 (all Editions) or Windows 7 (all Editions).

1. To create a mirror, **right-click** the original drive or under **Action/All actions** and click **Mirror** or **Add mirror**.
2. In the next step you should select the disk where the mirror should be saved.
3. After confirmation, the mirroring process will be run.

Advanced functions

In addition to the various management functions O&O PartitionManager offers additional advanced functions, e.g. the secure deletion of private data.

Recognize new disks

Should newly connected disks, e.g., USB Sticks, internal and external hard disks, not be displayed, got to **Action/Search for new devices** to refresh the view of disks.

Note: Restart your computer if the new disk is not identified.

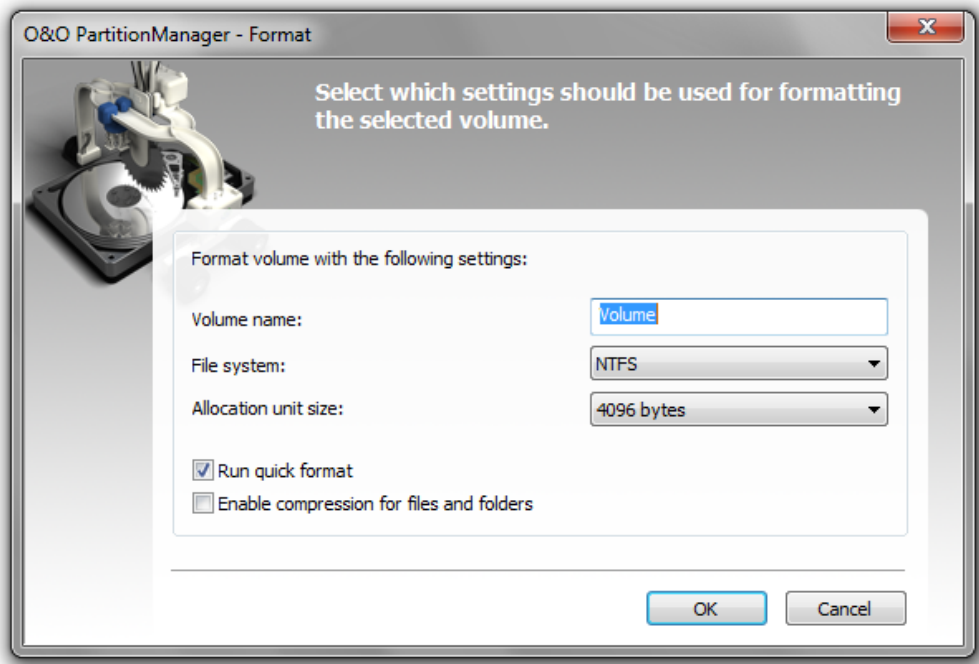
Note: New disks will be added to your computer as basic disks by default.

Note: Dynamic disks of new or unknown hard disks will first be displayed as unallocated spaces. With the help of O&O PartitionManager, you can import them so that they will be displayed as dynamic disks.

Format drives

You can format a selected disk, a partition or a volume by right-clicking it or over the main menu under **Action / All actions**. All data will be deleted and a file system will be created on the disk, on which you can store data again.

Note: Data on the drive you wish to format will be lost when formatting. We recommend to create an image of the content first, using O&O DiskImage for example.



Format drives

Delete drive

You can delete an existing drive by either right-clicking it, or clicking under **Action/All jobs**. The drive as well as the data on it will be lost by this.

Note: When deleting a drive, all data on the drive is also deleted. To be on the safe side, before deleting, create an image of your data drive with special software like O&O DiskImage.

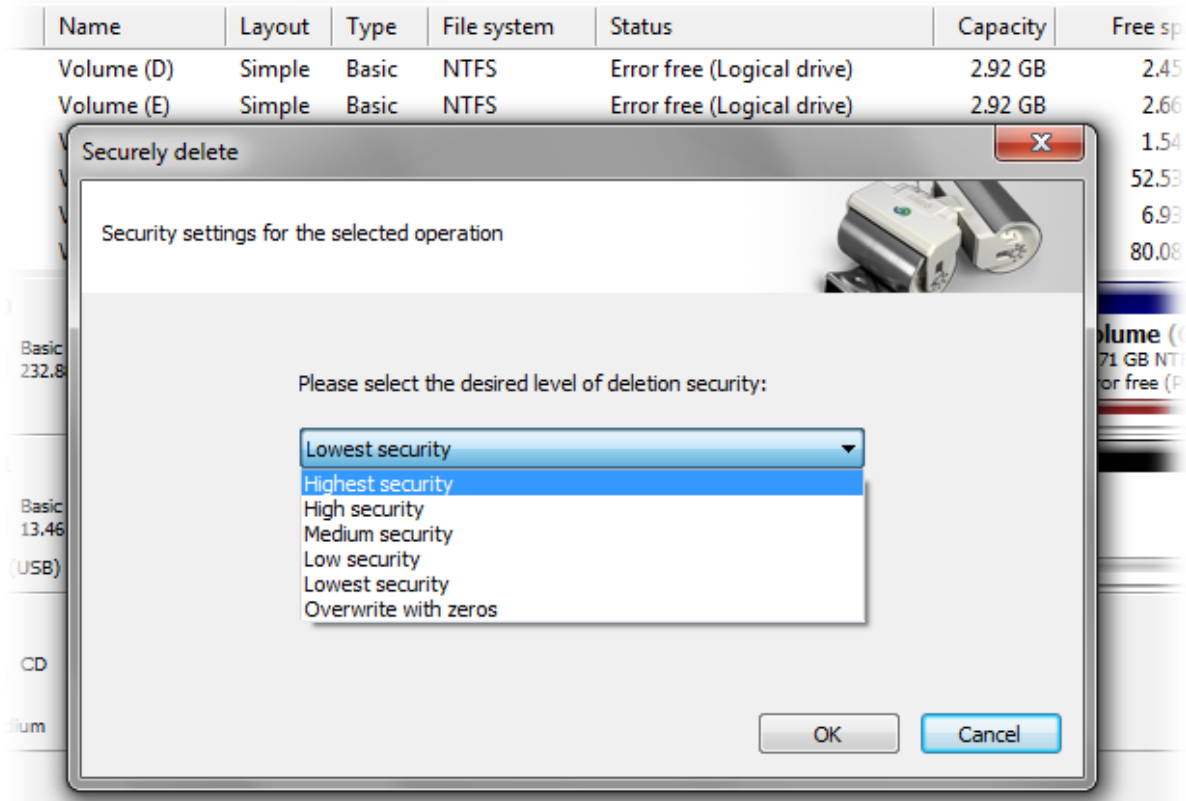
Note: Deleting the system partition with O&O PartitionManager is only possible by using the Start CD from and under Windows PE.

Delete the contents of a drive securely

When you delete data, they are no longer visible to the system. Your data, however, are still present on your hard disk. To be absolutely certain your data are permanently deleted, right-click the drive and click **Delete drive securely**. This is something you should really do in the event you want to give your computer away or sell it.

Note: When you delete a drive securely, the drive will be permanently deleted. All data on it will be deleted thanks to the technology of O&O SafeErase. Not even special data recovery software will be able to restore any data from these free spaces. To be on the safe side, before deleting, create an image of your data drive with special software like O&O DiskImage.

Note: Deleting the system partition with O&O PartitionManager is only possible by using the Start CD from and under Windows PE.



Select method of deletion

Delete disk securely

1. If you want to reset a disk's default settings, right-click and select **Delete disk securely**.
2. You can then select a method of deletion. The amount of time needed for deletion to be completed will depend on the size of the disk and the deletion method's level of security.
3. Once you've made your selection, the disk's entire content, i.e., all partitions, free areas, and volumes (including any data on them), will be securely and permanently deleted.
4. After this, the disk will no longer be initialized.

Note: If you're removing (for example, securely deleting) a dynamic disk from your system, Windows will display an "image" of that disk. If you don't want to have the image displayed, delete all the volumes on it. Afterwards, you'll be able to select **Remove disk** by right-clicking the disk.

Note: When you delete a disk securely, the disk will be permanently deleted with the technology of O&O SafeErase and all data on it can never be recovered. Not even special data recovery software will be able to restore any data

from these free spaces. To be on the safe side, before deleting, create an image of your data drive with special software like O&O DiskImage.

Note: Deleting the system partition with O&O PartitionManager is only possible by using the Start CD from and under Windows PE.

Securely delete free areas of a disk

The free areas of a disk are also called non-initialized areas. These are areas not belonging to any partition or volume. Such areas may, however, contain remnants of data (e.g., deleted data), if the free area previously belonged to a partition.

1. To make sure that no data on these areas will be restored, select the function **Delete securely** in the right-click menu.
2. You can then select a method of deletion. The amount of time needed for deletion to be completed will depend on the size of the disk and the deletion method's level of security.

Rename drive and change paths

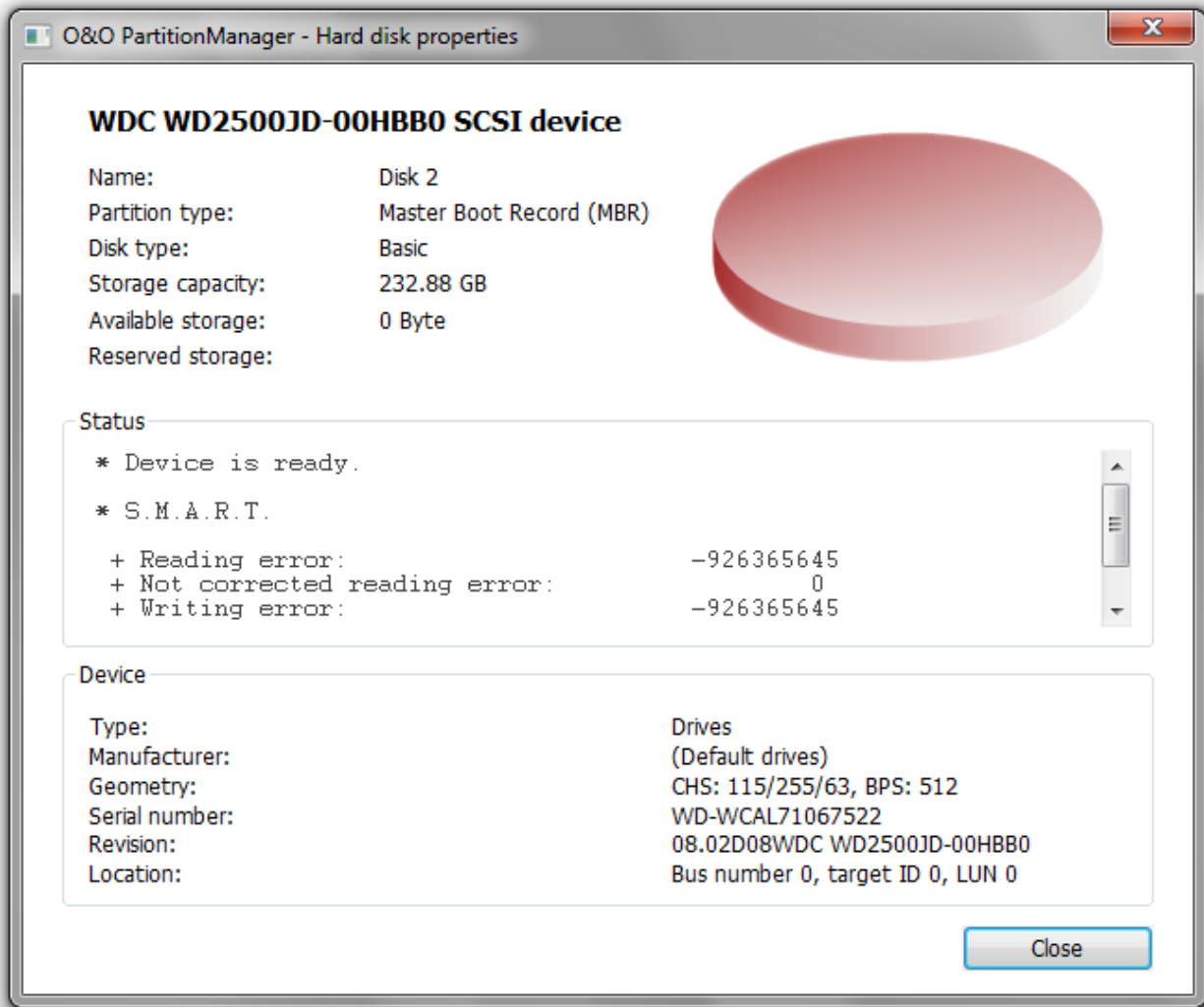
If you want to change the drive letters, right-click the drive then click **Change drive letter and paths** and enable your settings in the dialogue window.

Paths can also be assigned instead of drive letters. Just like a shortcut, the created partition will then be displayed in the new folder (only with NTFS).

Display properties

By right-clicking on a disk/partition and then on **Properties** you can display all corresponding information.

Tip: When you click on a drive/partition, you'll be able to get pertinent information about it in the details window.



Drive information

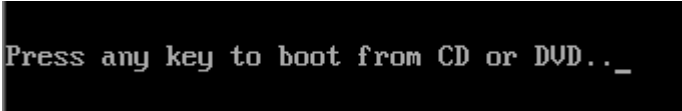
Using the Start CD

Thanks to the Start CD - the only one of its kind in the entire world - being able to run its very own mini-operating system based on Windows PE, you'll be able to use O&O Partition Manager without having to rely on your own Windows operating system. The Windows driver contained in Windows PE is a guarantee that you will always have access to your hardware. There'll also be no problem if an important driver is missing because O&O DriverLoader will be able to load it for you. Having Windows PE as its foundation gives O&O PartitionManager unlimited possibilities to help you make changes in your hard disk configurations.

Boot directly from CD

Make sure that your system is able to be started from a CD. You can place the appropriate settings in BIOS. Further information can be obtained from your motherboard manufacturer.

1. Enter the Start CD in your computer's CD/DVD drive.
2. Restart the computer.
3. To run O&O PartitionManager, follow the instructions for starting the CD. This procedure can take a few minutes. At this stage is the **Network initialized**. If a network connection cannot be initialized, it means your network card is not supported.



Press any key to boot from CD or DVD..._

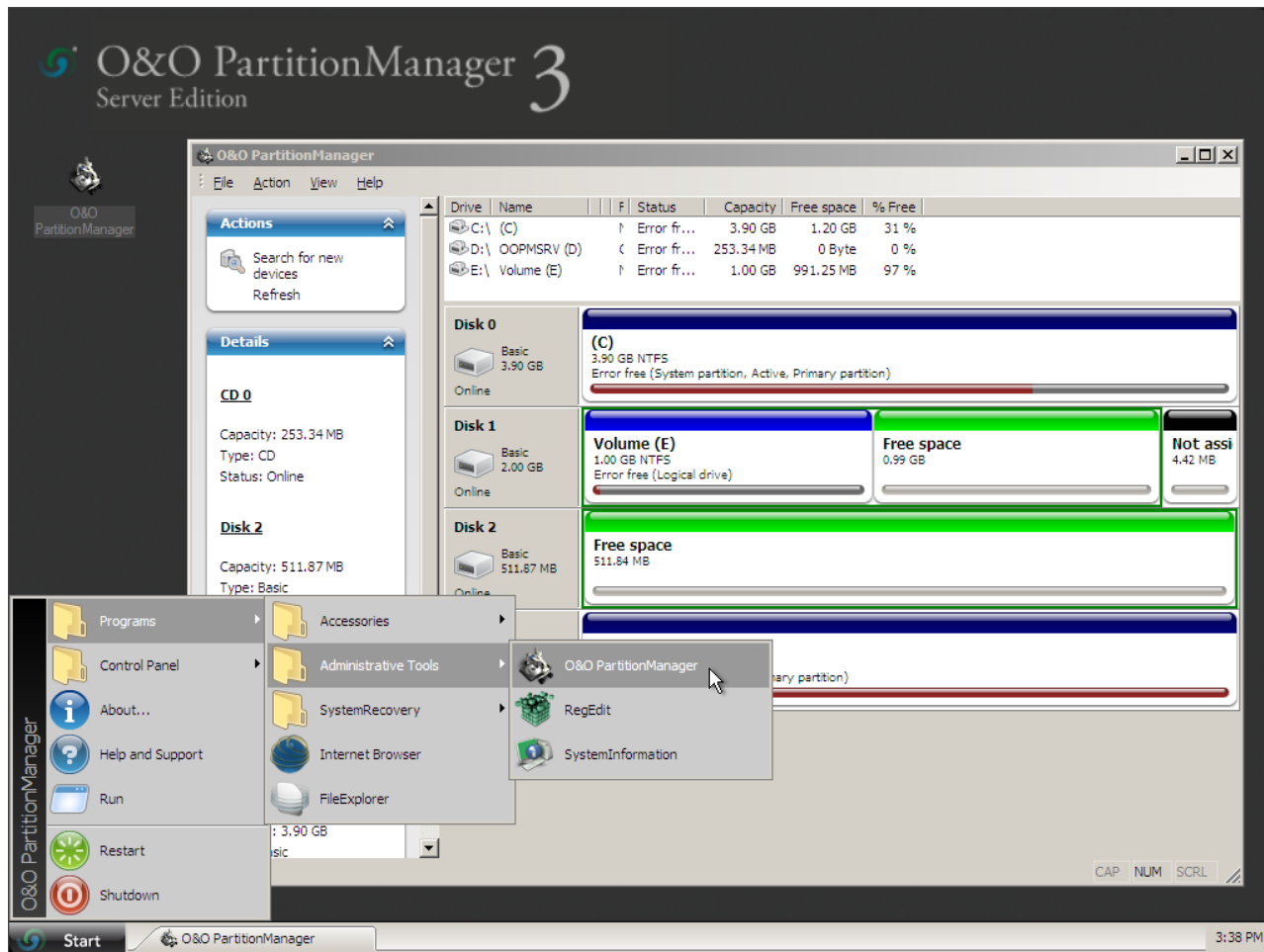
4. The system settings will subsequently appear in the window. Use the menu feature **System** for selecting your target system. This selection is particularly important when several operating systems are installed on the computer. If no system is displayed, the selection will default to Windows PE.
5. In addition, you can select the language, region, the desktop settings and the drivers etc.

O&O PartitionManager will be started after confirming the license agreements, and the welcoming page of O&O PartitionManager under Windows PE is displayed.

- Start O&O PartitionManager under **Start/Programs/Administration/O&O PartitionManager**

Note: O&O PartitionManager does not support encrypted drives!

Using the Start CD



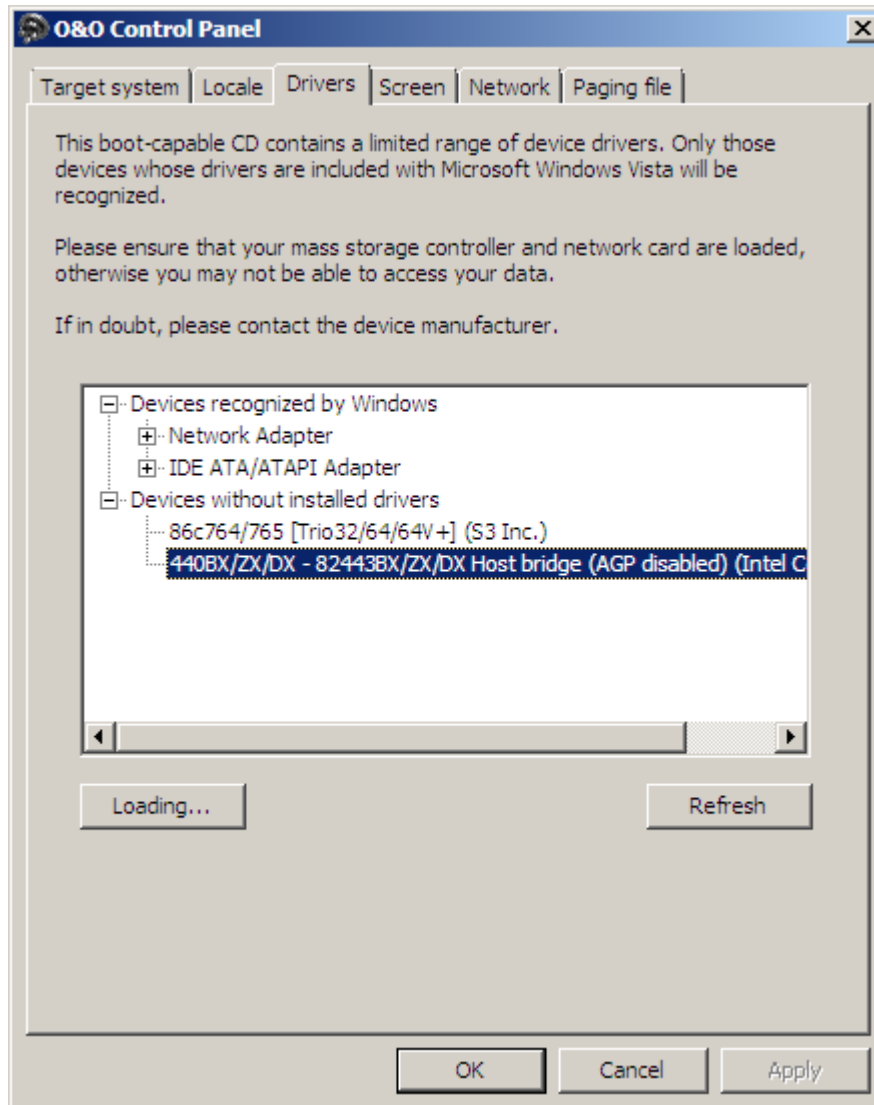
Start O&O PartitionManager directly from CD

Load drivers

Before starting O&O PartitionManager, it's possible to install hard disk controller drivers to make sure the program will be able to detect all connected hard disks. This also applies to drivers for network cards.

Under **Drivers** in the system settings, you can load drivers for those devices still unable to be found under PE.

Note: Under certain circumstances you may receive a message requiring you to restart if you have loaded an additional driver under Windows PE. This message is automatically generated by Windows PE but is irrelevant when starting from a CD. Simply decline the request and follow the further instructions in the pop-up window.



Load additional drivers under Windows PE

VDS backward compatibility under Windows PE

The Start CD is based on Windows Server 2008 PE. The Virtual Disk Service provider used under this system is not backward compatible to the operating systems listed below. These will no longer be able to start if you create or edit a dynamic disk under Windows PE.

This exception applies to the following operating systems:

- Microsoft Windows 2000 Server
- Microsoft Windows Server 2003
- Microsoft Windows XP Professional 64-bit

Support and contact

To receive more information about O&O DiskImage, please visit our website, <http://www.oo-software.com>, and get the latest information about product developments and support. Also included on our web site are regularly updated FAQs and knowledge bases that address the most common problems and questions regarding our products.

All registered customers receive installation support, free of charge, for the first 30 days after registration. When contacting our support team, please do not forget to have your registration code available.

In addition, it may be helpful to read the frequently asked questions (FAQ) section of our website before contacting our support team. It is always possible that your specific question or problem may have already been addressed.

O&O Software GmbH

Address: Am Borsigturm 48
13507 Berlin
Germany

Tel: +49(0)30 4303 4303

Fax: +49(0)30 4303 4399

Web: <http://www.oo-software.com>

e-mail: sales@oo-software.com or
support@oo-software.com

Authorized resellers

Our authorized reseller partners in over 30 countries stand ready to assist you with answers to all questions regarding the licensing and purchase of our software products. Their names and addresses may be found on our website, under the heading "Partner – Find Resellers". We would also be more than happy to assist you in finding the partner closest to you.

End user license agreement 2.5 (EULA)

O&O Software

General and Specialized Section

General Section

IMPORTANT – PLEASE READ CAREFULLY

This End User License Agreement (EULA) is organized into 2 sections: a general part, which is valid for all O&O products, and a specialized part, which includes the particular terms of each corresponding product. By accepting both parts of the license terms they automatically form part of your contract with O&O Software, Am Borsigturm 48, 13507 Berlin. If you have any questions regarding this contract and the license terms, our Service Team is available to help you under info@oo-software.com.

The software product is protected by copyright laws and international copyright contracts as well as other laws and agreements concerning intellectual property.

1.Object and form of delivery

(1) You receive the software covered by the contract in executable form (Binary code) together with the relevant documentation released by O&O according to Section (6).

(2) The software provides the range of functions described in the given documentation. The documentation regarding functionality may be consulted prior to concluding the contract in the Internet presentation on the following site <http://www.oo-software.com/>.

(3) Delivery will be made according to the way in which you have purchased the software, either by having a disk directly handed over or sent by mail to an address you have supplied or through the forwarding of license as well as any required download information to a given E-mail address.

(4) If you are currently receiving updates as part of a maintenance agreement, these will continue to be supplied in the same way as the initial software delivery, i.e., for a disk sent by mail, a disk containing the update will be sent to the given address: for electronically delivered keys, a key for downloading updates will be sent to the given E-mail address.

(5) Changes to the delivery or E-mail address can only be taken into consideration when they are supplied in writing or by E-mail to the address or E-mail address indicated on <http://www.oo-software.com> at least two weeks before delivery of the update.

(6) A printed copy of the documentation will not be included in delivery. The documentation consists primarily of electronic aids.

2.Requirements for application (system requirements)

(1) Installation of the software is not part of the agreement.

(2) Depending on the software, there are certain system requirements that must be met in order to use the software according to the terms of this contract. These will be defined according to each product in the specialized section of this contract.

3.Rights of use, including test versions, unauthorized transfer, and application

End user license agreement 2.5 (EULA)

- (1) O&O grants you, upon payment of the agreed one-time fee, a permanent, spatially unlimited and non-exclusive right to use the software.
- (2) Test versions – if you have installed a test version of one of our products taken from the O&O Website <http://www.oo-software.com/>, the right of use will be, according to the program, for a limited time only and/or technically restricted.
- (3) One copy of the software is entitled to be used on a maximum of one (1) output device/workstation simultaneously.
- (4) If you want to use the software on more than one output device/workstation, the rights of use must be extended accordingly. To find out which O&O products are also available as volume licenses, please consult (<http://www.oo-software.com/>). The separate price list concerning O&O Volume Licenses will apply to extending the rights of use without redelivery.
- (5) Any use beyond that agreed upon in the contract is one in violation of the contract. In such a case, you are required to report this use that exceeds the rights of use to the supplier without any delay. The parties will then try to bring about an agreement for extending the rights of use. For the duration of the excessive usage, i.e., until the conclusion of such an agreement or the cessation of the excessive usage, you are required to pay compensation for this excessive usage according to the amount indicated in our price lists. The amount of compensation will be calculated on the basis of a four year, straight-line depreciation. If we are not informed of the excessive usage, a contract penalty in the amount three times the price of the usage indicated in the price list will be due O&O.
- (6) You are entitled to create a backup copy of the software and to conduct ordinary data backups. The creation of more copies than the amount needed for the backing up of any future usage (including the backup copies and data backups) is not allowed.
- (7) Copyrights and other trademarks within the software may not be altered or removed. They must be transferred onto every copy of the software.
- (8) Unauthorized transfer – only when you have purchased the software with an accompanying disk are you permitted to transfer it and then, only under the following conditions: a resale of the software is only permitted when it involves an entire software copy, i.e., by surrendering your own usage of the purchased copy, you are entitled to transfer these rights of use of the disk onto a third party according to the terms of the agreement existing between you and O&O. When making such a transfer, you are required to hand over to the third party all materials related to the software that are covered in the contract and to delete the software from any storage volumes (e.g., hard disks) remaining in your possession.
- (9) Unauthorized rental and service – The purchase of this contract does not entitle you to any public transfer or rental of the software. You are also not entitled to include the software as part of your providing services for and in the presence of any third parties. You may purchase an appropriate license from O&O for doing this.

4.Payment

- (1) The prices are given with the corresponding sales taxes included, unless otherwise indicated.
- (2) Test versions – Downloads of test versions offered by O&O are provided free of charge, unless otherwise indicated.
- (3) If you receive updates of your programs as part of a Maintenance Agreement, the terms of payment in these contracts will apply to these Maintenance Agreements.
- (4) O&O is entitled to forward any data it has received onto third parties requiring it for purposes of collection.

(5) Until payment is made in full, O&O retains possession of all rights, particularly those concerning copyrighted rights of use, on the materials included in this contract. O&O is specifically entitled to cancel a contract, for example, when your payment is delayed, it prohibits the further using of the software and demands the surrendering of all copies or this being impossible, to demand their deletion. Should a third party have access to the object of purchase before payment is completed for the contractual software, you are required to inform this third party about the object being the property of O&O and to inform O&O, in writing, about the third party's access.

5. Material defect and defect of title

(1) The software package or download you receive is free of any material defect or defect of title.

(2) A material defect exists when the software is unable to be used as described in the documentation appearing on the web site and included in delivery or available for downloading.

O&O is constantly checking to make sure that other sources are not misrepresenting the functions and properties of the software as described in the documentation. You can therefore assume that any descriptions beyond those found in the software documentation have not originated with O&O and are also unknown to it. Please inform O&O if you learn of any software descriptions that include functions and properties not mentioned in the documentation.

(3) Please inform O&O if you learn of any software descriptions that include functions and properties not mentioned in the documentation.

(4) Any claims concerning defects of material and/or title related to the software have a limitation period of two years subsequent to delivery of the program or transmission of the serial number needed for downloading. If you are not a private individual, the warranty period is shortened to one year.

If O&O has fraudulently concealed a material defect, a three year limitation period will cover claims related to this defect.

Payment for compensation that you might have been entitled to as a result of cancellation or an abatement can be refused upon expiration of the limitation period.

(5) You are required to inform O&O, in writing if possible, of any defects that arise immediately upon their discovery. While doing so you should also describe, as well as possible, how the defect is communicated, the effect it has on the program, and under which circumstances it occurs.

(6) Should defects be reported to O&O within the limitation period, it will undertake a cure free of charge.

(7) As part of the cure, the corrected software will be redelivered as agreed. An on-site analysis and correction of the error on your system will not take place.

O&O assumes the ensuing expenses for the cure, in particular the costs for transport, labor, and material. You are personally responsible for installation. O&O specifically does not assume on-site installation as part of its obligation with regard to defects of material or title.

Should a change of the program be required as part of the cure, O&O will make the necessary changes in the documentation without any charges.

(8) After the unsuccessful expiration of a deadline you set for cure, you can cancel the contract or reduce the purchase price and demand compensation instead of service or the replacement of any futile expenditures.

(9) A deadline is not required when

- a) O&O refuses both kinds of cure, even if it is entitled to do so as a result of the arising expenses or
- b) the cure is impossible or
- c) the cure is unacceptable to you or
- d) the cure is unsuccessful.

A subsequent improvement is considered a failure after the second unsuccessful attempt unless there is something particular about the type of software or the defect itself or the surrounding circumstances that would indicate otherwise.

(10) You are not entitled to cancel the contract if the defect is negligible, nor may you, in this event, demand compensation instead of full service.

(11) In the event of cancellation, compensation is due for any uses made. The compensation for use will be based on a four year, straight-line depreciation of the purchase price.

(12) As a result of the abatement, the purchase price will be reduced by the amount which is calculated for deducting the defect from the value of the software. The standard used will be its value at the time the contract was concluded. The amount, when necessary, is to be calculated by estimation. As a result of this reduction, any amount larger than that paid for the reduced purchase price will be refunded.

If it turns out that a reported problem did not arise as a result of a defect in the software and if you can be accused of malice or gross negligence, then O&O is entitled to invoice you for: 1) services; 2) the expenses for analysis and; 3) correction of the problem, according to the amount stated in the price list.

(14) The seller's warranty is canceled when changes are made on the software without expressed written consent or when the software is not used as intended or used in an improper software environment, unless you can prove that these facts had nothing to do with the problems that occurred.

6.Limitation of compensation

(1) O&O is liable for compensation for every legal ground to the extent described in the following provisions.

(2) The extent of liability of O&O for damages caused by malice or gross negligence arising from O&O itself or one of its vicarious or legal agents is unlimited.

(3) There is no limit to the extent of liability of O&O or any of its legal or vicarious agents for damages involving injury to life, physical well-being or health, or for simple breach of duty.

(4) There is unlimited liability for damages caused by serious organizational fault on the part of O&O as well as for damages arising from a missing guaranteed characteristic.

(5) For the breach of an essential contractual duty, O&O is liable for damages normally foreseen in a contract when none of the instances in provisions (2) – (4) applies.

(6) Any further liability for compensation is excluded, specifically excluded is liability without fault.

(7) Liability as defined by the product liability law remains untouched.

(8) If damage can be traced to have arisen through a fault on the part of O&O as well as on the part of yourself, you must have your share of the fault evaluated.

You are responsible for making a standard backup of your data at least once a day. For data loss caused by O&O, O&O is only liable for the expense of duplicating the data on your backup copies that need to be created and for the restoration of data which would have also been lost during a standard backup procedure.

7. Final provisions

- (1) You may only balance claims from O&O with indisputable or legally valid claims.
- (2) Changes and amendments to this contract must be made in writing. This also applies to changes to this provision.
- (3) The contract is subject to German law. The uniform UN purchasing law (CISG) as well as the UNIDROIT Factoring Agreement of Ottawa do not apply.
- (4) Any general terms and conditions on your part will not be applied.

In the event you are not a private individual or a resident of the Federal Republic of Germany, we agree that the district court in Berlin will be the competent court for litigation arising from this contract.

8. Contact

If you have any questions concerning the O&O Software License Agreement or wish to speak with O&O, please get in touch with us.

O&O Software GmbH, Am Borsigturm 48, 13507 Berlin, Germany.

Telephone: +49 (0)30 4303 4303, Fax: +49 (0)30 4303 4399

E-Mail info@oo-software.com / sales@oo-software.com, Web www.oo-software.com

Special section

O&O BlueCon

Important note on the Windows PE Start CD

The Microsoft® Windows™ Preinstallation Environment contained in this hardware or this software may only be used for starting, diagnosing, setup, restoration, installation, configuration, testing or disaster recovery.

NOTE: THIS SOFTWARE CONTAINS A SECURITY FEATURE THAT WILL CAUSE END USER'S SYSTEM TO REBOOT WITHOUT PRIOR NOTIFICATION TO THE END USER AFTER 72 HOURS OF CONTINUOUS USE.

Amendment to: 2. Requirements for application (system requirements)

The software requires the Windows 2000 (all Editions), Windows Server 2003 (all Editions), Windows XP (all Editions), Windows Vista (all Editions) or Windows Server 2008 (all Editions) operating systems. Usage within the terms of this contract is not achieved without the application of these operating systems.

The product at hand can only be employed according to the acquired license. The following license types exist for O&O BlueCon:

O&O BlueCon Admin Edition

End user license agreement 2.5 (EULA)

You are authorized to install and use the software product on all computers a) in the possession of the company (legal person or natural person(s) in the case of corporations) owning the license and b) all located at a single site. This license is bound to a single natural person and is non-transferable.

O&O BlueCon Tech Edition

You are authorized to install and use the software product on all computers. This includes computers that do not belong to the company owning the license (also known as Service Technician's License). This license is bound to a single natural person and is non-transferable.

O&O CleverCache

Amendment to: 2. Requirements for application (system requirements)

O&O CleverCache Professional Edition

The software requires the Windows XP (all Editions), Windows Vista (all Editions) or Windows 7 (all editions) operating systems. Usage within the terms of this contract is not achieved without the application of these operating systems.

O&O CleverCache Server Edition

The software requires Windows Server 2003 (all Editions), Windows XP (all Editions), Windows Vista (all Editions), Windows Server 2008 (all Editions), Windows 7 (all Editions) or Windows Server 2008 R2 (all Editions) operating systems. Usage within the terms of this contract is not achieved without the application of these operating systems.

O&O Defrag

Amendment to: 2. Requirements for application (system requirements)

O&O Defrag Professional Edition

The software requires the Windows 2000 Professional, Windows XP (all Editions), Windows Vista (all Editions) or Windows 7 (all editions) operating systems. Usage within the terms of this contract is not achieved without the application of these operating systems. Control of the program through a network management is not possible.

O&O Defrag Workstation Edition

The software requires the Windows 2000 Professional, Windows XP (all Editions), Windows Vista (all Editions) or Windows 7 (all editions) operating systems. Usage within the terms of this contract is not achieved without the application of these operating systems. The O&O Defrag Workstation Edition may be used on computers with or without the user interface. You are entitled to control this program over the separately obtainable network manager.

O&O Defrag Server Edition

The software requires Windows 2000 (all Editions), Windows Server 2003 (all Editions), Windows XP (all Editions), Windows Vista (all Editions), Windows Server 2008 (all Editions), Windows 7 (all Editions) or Windows Server 2008 R2 (all Editions) operating systems. Usage within the terms of this contract is not achieved without the application of these operating systems. The O&O Defrag Server Edition may be used on computers with or without the user interface. You are entitled to control this program over the separately obtainable network manager.

O&O Defrag Virtual Machine Edition

The software may only be used on the appropriate operating system in accordance with the previously mentioned conditions for the Workstation and Server Editions. You must own a minimum of one Server Edition to use a Virtual Machine Edition.

O&O DiskImage

Important note on the Windows PE Start CD

This note is only valid for the O&O DiskImage Professional and the Server Edition Start CD. The Microsoft® Windows™ Preinstallation Environment (Windows PE) is not a part of O&O DiskImage Express, Special and the Workstation Edition!

The Microsoft® Windows™ Preinstallation Environment contained in this hardware or this software may only be used for starting, diagnosing, setup, restoration, installation, configuration, testing or disaster recovery.

NOTE: THIS SOFTWARE CONTAINS A SECURITY FEATURE THAT WILL CAUSE END USER'S SYSTEM TO REBOOT WITHOUT PRIOR NOTIFICATION TO THE END USER AFTER 72 HOURS OF CONTINUOUS USE.

Amendment to: 2. Requirements for application (system requirements)

O&O DiskImage Express Edition

The software requires the Windows 2000 Professional, Windows XP (all Editions), Windows Vista (all Editions) or Windows 7 (all editions) operating systems. Usage within the terms of this contract is not achieved without the application of these operating systems. Control of the program through a network management is not possible.

O&O DiskImage Professional Edition and Special Edition

The software requires the Windows 2000 Professional, Windows XP (all Editions), Windows Vista (all Editions) or Windows 7 (all editions) operating systems. Usage within the terms of this contract is not achieved without the application of these operating systems. Control of the program through a network management is not possible.

O&O DiskImage Workstation Edition

The software requires the Windows 2000 Professional, Windows XP (all Editions), Windows Vista (all Editions) or Windows 7 (all editions) operating systems. Usage within the terms of this contract is not achieved without the application of these operating systems. The O&O DiskImage Workstation Edition may be used on computers with or without the user interface. You are entitled to control this program over the separately obtainable network manager.

O&O DiskImage Server Edition

The software requires Windows 2000 (all Editions), Windows Server 2003 (all Editions), Windows XP (all Editions), Windows Vista (all Editions), Windows Server 2008 (all Editions), Windows 7 (all Editions) or Windows Server 2008 R2 (all Editions) operating systems. Usage within the terms of this contract is not achieved without the application of these operating systems. The O&O DiskImage Server Edition may be used on computers with or without the user interface. You are entitled to control this program over the separately obtainable network manager.

O&O DiskImage Virtual Machine Edition

End user license agreement 2.5 (EULA)

The software may only be used on the appropriate operating system in accordance with the previously mentioned conditions for the Workstation and Server Editions. You must own a minimum of one Server Edition to use a Virtual Machine Edition.

Amendment to: 3. Rights of use, including test versions, unauthorized transfer, and application

Creation and restoration of images

The source computer and each target computer are required to hold licenses, to create and restore images using O&O DiskImage. One license is sufficient under the previously mentioned terms, if the source and the target computer is one non-virtual workstation. Each virtual machine is seen as an independent computer; in other words, each virtual machine needs its own license.

O&O DiskRecovery

Amendment to: 2. Requirements for application (system requirements)

The software requires Windows 2000 (all Editions), Windows Server 2003 (all Editions), Windows XP (all Editions), Windows Vista (all Editions), Windows Server 2008 (all Editions), Windows 7 (all Editions) or Windows Server 2008 R2 (all Editions) operating systems. Usage within the terms of this contract is not achieved without the application of these operating systems.

The product at hand can only be employed according to the acquired license. The following license types exist for O&O DiskRecovery:

O&O DiskRecovery Personal Edition

You are authorized to install and use the software product on only one computer. This should be used wholly in conjunction with all hardware in your possession, i.e. this license may not be used to provide a service to a third party. Other limitations may apply in the software itself. Please consult the software documentation for more information on these limitations.

O&O DiskRecovery Admin Edition

You are authorized to install and use the software product on all computers

a) in the possession of the company (legal person or natural person(s) in the case of corporations) owning the license and b) all located at a single site. Diese Rechner müssen sich vollständig einschließlich aller angeschlossenen Hardware in Ihrem Eigentum befinden, d.h. mit dieser Lizenz darf keine Dienstleistung für Dritte erbracht werden. This license is bound to a single natural person and is non-transferable.

O&O DiskRecovery Tech Edition

You are authorized to install and use the software product on all computers. This includes computers that do not belong to the company owning the license (also known as Service Technician's License). This license is bound to a single natural person and is non-transferable.

O&O DiskStat

Amendment to: 2. Requirements for application (system requirements)

O&O DiskStat Professional Edition

End user license agreement 2.5 (EULA)

The software requires the Windows 2000 Professional, Windows XP (all Editions), Windows Vista (all Editions) or Windows 7 (all editions) operating systems. Usage within the terms of this contract is not achieved without the application of these operating systems.

O&O DiskStat Workstation Edition

The software requires the Windows 2000 Professional, Windows XP (all Editions), Windows Vista (all Editions) or Windows 7 (all editions) operating systems. Usage within the terms of this contract is not achieved without the application of these operating systems. The O&O DiskStat Workstation Edition may be used on computers with or without the user interface. You are entitled to control this program over the separately obtainable network manager.

O&O DiskStat Server Edition

The software requires Windows 2000 (all Editions), Windows Server 2003 (all Editions), Windows XP (all Editions), Windows Vista (all Editions), Windows Server 2008 (all Editions), Windows 7 (all Editions) or Windows Server 2008 R2 (all Editions) operating systems. Usage within the terms of this contract is not achieved without the application of these operating systems.

O&O DiskStat Virtual Machine Edition

The software may only be used on the appropriate operating system in accordance with the previously mentioned conditions for the Workstation and Server Editions. You must own a minimum of one Server Edition to use a Virtual Machine Edition.

O&O DriveLED

Amendment to: 2. Requirements for application (system requirements)

O&O DriveLED Professional Edition

The software requires the Windows 2000 Professional, Windows XP (all Editions), Windows Vista (all Editions) or Windows 7 (all editions) operating systems. Usage within the terms of this contract is not achieved without the application of these operating systems. Control of the program through a network management is not possible.

O&O DriveLED Workstation Edition

The software requires the Windows 2000 Professional, Windows XP (all Editions), Windows Vista (all Editions) or Windows 7 (all editions) operating systems. Usage within the terms of this contract is not achieved without the application of these operating systems. The O&O DriveLED Workstation Edition may be used on computers with or without the user interface. You are entitled to control this program over the separately obtainable network manager.

O&O DriveLED Server Edition

The software requires Windows 2000 (all Editions), Windows Server 2003 (all Editions), Windows XP (all Editions), Windows Vista (all Editions), Windows Server 2008 (all Editions), Windows 7 (all Editions) or Windows Server 2008 R2 (all Editions) operating systems. Usage within the terms of this contract is not achieved without the application of these operating systems. The O&O DriveLED Server Edition may be used on computers with or without the user interface. You are entitled to control this program over the separately obtainable network manager.

O&O DriveLED Virtual Machine Edition

End user license agreement 2.5 (EULA)

The software may only be used on the appropriate operating system in accordance with the previously mentioned conditions for the Workstation and Server Editions. You must own a minimum of one Server Edition to use a Virtual Machine Edition.

O&O Enterprise Management Console

Important note on the Microsoft SQL Server

This product uses the Microsoft SQL Server or Microsoft SQL Server Express Edition. To the extent that these programs are part of the installation of this product, the terms of their licensing related to the use of this software will also apply to the terms of this agreement.

The use of Microsoft SQL Server Express Edition is free of charge in conjunction with this product. The purchase of licenses for O&O Enterprise Management Console and related products is separate from any possible purchase of SQL Server products.

Amendment to: 2. Requirements for application (system requirements)

The software requires Windows 2000 (all Editions), Windows Server 2003 (all Editions), Windows XP (all Editions), Windows Vista (all Editions), Windows Server 2008 (all Editions), Windows 7 (all Editions) or Windows Server 2008 R2 (all Editions) operating systems. Usage within the terms of this contract is not achieved without the application of these operating systems.

O&O EventViewer

Amendment to: 2. Requirements for application (system requirements)

O&O EventViewer Workstation Edition

The software requires the Windows 2000 Professional, Windows XP (all Editions), Windows Vista (all Editions) or Windows 7 (all editions) operating systems. Usage within the terms of this contract is not achieved without the application of these operating systems. The O&O EventViewer Workstation Edition may be used on computers with or without the user interface. You are entitled to control this program over the separately obtainable network manager.

O&O EventViewer Server Edition

The software requires Windows 2000 (all Editions), Windows Server 2003 (all Editions), Windows XP (all Editions), Windows Vista (all Editions), Windows Server 2008 (all Editions), Windows 7 (all Editions) or Windows Server 2008 R2 (all Editions) operating systems. Usage within the terms of this contract is not achieved without the application of these operating systems.

O&O EventViewer Virtual Machine Edition

The software may only be used on the appropriate operating system in accordance with the previously mentioned conditions for the Workstation and Server Editions. You must own a minimum of one Server Edition to use a Virtual Machine Edition.

O&O ISOBoot

Important note on the use of O&O ISOBoot

End user license agreement 2.5 (EULA)

The program overwrites the target data volume (these include among other things rewritable CDs or USB sticks). Please make sure that no data you need is left on the target data volume. Overwriting data cannot be reversed!

O&O formally declares that it is not responsible for damages arising from the improper use of O&O ISOBoot.

Amendment to: 2. Requirements for application (system requirements)

The software requires the Windows 2000 (all editions), Windows Server 2003 (all editions), Windows XP (all editions), Windows Vista (all editions), Windows 7 (all editions) or Windows Server 2008 (all editions) operating systems. Usage within the terms of this contract is not achieved without the application of these operating systems.

Amendment to: 4. Payment

O&O demands no fee for the use of O&O ISOBoot. In addition, a fee for this license and this program may not be demanded by any Third Parties, unless this is done with the expressed approval of O&O. When in doubt, please get in touch with us.

O&O MediaRecovery

Amendment to: 2. Requirements for application (system requirements)

The software requires Windows 2000 (all Editions), Windows Server 2003 (all Editions), Windows XP (all Editions), Windows Vista (all Editions), Windows Server 2008 (all Editions), Windows 7 (all Editions) or Windows Server 2008 R2 (all Editions) operating systems. Usage within the terms of this contract is not achieved without the application of these operating systems.

O&O PartitionManager

Important note on the Windows PE Start CD

The Microsoft® Windows™ Preinstallation Environment contained in this hardware or this software may only be used for starting, diagnosing, setup, restoration, installation, configuration, testing or disaster recovery.

NOTE: THIS SOFTWARE CONTAINS A SECURITY FEATURE THAT WILL CAUSE END USER'S SYSTEM TO REBOOT WITHOUT PRIOR NOTIFICATION TO THE END USER AFTER 72 HOURS OF CONTINUOUS USE.

Amendment to: 2. Requirements for application (system requirements)

O&O PartitionManager Professional Edition

The software requires the Windows 2000 Professional, Windows XP (all Editions), Windows Vista (all Editions) or Windows 7 (all editions) operating systems. Usage within the terms of this contract is not achieved without the application of these operating systems.

O&O PartitionManager Server Edition

The software requires Windows 2000 (all Editions), Windows Server 2003 (all Editions), Windows XP (all Editions), Windows Vista (all Editions), Windows Server 2008 (all Editions), Windows 7 (all Editions) or Windows Server 2008 R2 (all Editions) operating systems. Usage within the terms of this contract is not achieved without the application of these operating systems.

O&O RegEditor

Important note for working with the Microsoft Windows Registry

End user license agreement 2.5 (EULA)

Before making changes to the Microsoft Windows Registry (in the following Registry), you should prepare a backup copy of the Registry and ensure that you'll be able to restore the Registry if a problem should arise.

O&O formally declares that it is not responsible for damages arising from the improper use of O&O RegEdit. Changes to the Registry should only be made by experienced users who are aware of the consequences of such changes. A defective Registry can influence the entire stability of the system and lead to a crash of the computer or make it unable to start. This can further lead to loss of data.

Amendment to: 2. Requirements for application (system requirements)

The software requires the Windows 2000 (all Editions), Windows Server 2003 (all Editions), Windows XP (all Editions), Windows Vista (all Editions) or Windows Server 2008 (all Editions) operating systems. Usage within the terms of this contract is not achieved without the application of these operating systems.

Amendment to: 4. Payment

O&O demands no fee for the use of this license. In addition, a fee for this license and this program may not be demanded by any Third Parties, unless this is done with the expressed approval of O&O. When in doubt, please get in touch with us.

O&O RescueBox

Important note on the Windows PE Start CD

The Microsoft® Windows™ Preinstallation Environment contained in this hardware or this software may only be used for starting, diagnosing, setup, restoration, installation, configuration, testing or disaster recovery.

NOTE: THIS SOFTWARE CONTAINS A SECURITY FEATURE THAT WILL CAUSE END USER'S SYSTEM TO REBOOT WITHOUT PRIOR NOTIFICATION TO THE END USER AFTER 72 HOURS OF CONTINUOUS USE.

Amendment to: 2. Requirements for application (system requirements)

The software requires the Windows 2000 (all Editions), Windows Server 2003 (all Editions), Windows XP (all Editions), Windows Vista (all Editions) or Windows Server 2008 (all Editions) operating systems. Usage within the terms of this contract is not achieved without the application of these operating systems.

The product at hand can only be employed according to the acquired license. The following license types exist for O&O RescueBox:

O&O RescueBox Personal Edition

You are authorized to install and use the software product on only one computer. This should be used wholly in conjunction with all hardware in your possession, i.e. this license may not be used to provide a service to a third party. Other limitations may apply in the software itself. Please consult the software documentation for more information on these limitations.

O&O RescueBox Admin Edition

You are authorized to install and use the software product on all computers a) in the possession of the company (legal person or natural person(s) in the case of corporations) owning the license and b) all located at a single site. This should

End user license agreement 2.5 (EULA)

be used wholly in conjunction with all hardware in your possession, i.e. this license may not be used to provide a service to a third party. This license is bound to a single natural person and is non-transferable.

O&O RescueBox Tech Edition

You are authorized to install and use the software product on all computers. This includes computers that do not belong to the company owning the license (also known as Service Technician's License). This license is bound to a single natural person and is non-transferable.

O&O SafeErase

Amendment to: 2. Requirements for application (system requirements)

The software requires Windows 2000 (all Editions), Windows Server 2003 (all Editions), Windows XP (all Editions), Windows Vista (all Editions), Windows Server 2008 (all Editions), Windows 7 (all Editions) or Windows Server 2008 R2 (all Editions) operating systems. Usage within the terms of this contract is not achieved without the application of these operating systems.

O&O UnErase

Amendment to: 2. Requirements for application (system requirements)

The software requires Windows Server 2003 (all Editions), Windows XP (all Editions), Windows Vista (all Editions), Windows Server 2008 (all Editions), Windows 7 (all Editions) or Windows Server 2008 R2 (all Editions) operating systems. Usage within the terms of this contract is not achieved without the application of these operating systems.

The product at hand can only be employed according to the acquired license. The following license types exist for O&O UnErase:

O&O UnErase Personal Edition

You are authorized to install and use the software product on all computers a) in the possession of the company (legal person or natural person(s) in the case of corporations) owning the license and b) all located at a single site. This should be used wholly in conjunction with all hardware in your possession, i.e. this license may not be used to provide a service to a third party. This license is bound to a single natural person and is non-transferable.

O&O UnErase Admin Edition

You are authorized to install and use the software product on all computers a) in the possession of the company (legal person or natural person(s) in the case of corporations) owning the license and b) all located at a single site. This should be used wholly in conjunction with all hardware in your possession, i.e. this license may not be used to provide a service to a third party. This license is bound to a single natural person and is non-transferable.

O&O UnErase Tech Edition

You are authorized to install and use the software product on all computers. This includes computers that do not belong to the company owning the license (also known as Service Technician's License). This license is bound to a single natural person and is non-transferable.